

Product datasheet for RC201566

AP3S1 (NM_001284) Human Tagged ORF Clone

Product data:

Product Type: Expression Plasmids
Product Name: AP3S1 (NM_001284) Human Tagged ORF Clone
Tag: Myc-DDK
Symbol: AP3S1
Synonyms: CLAPS3; Sigma3A
Mammalian Cell Selection: Neomycin
Vector: pCMV6-Entry (PS100001)
E. coli Selection: Kanamycin (25 ug/mL)
ORF Nucleotide Sequence: >RC201566 ORF sequence
 Red=Cloning site Blue=ORF Green=Tags(s)

TTTTGTAATACGACTCACTATAGGGCGCCGGGAATTCGTCGACTGGATCCGGTACCGAGGAGATCTGCC
 GCC**CGATCGCC**

ATGATCAAGGCGATCCTAATCTTCAACAACCACGGGAAGCCGGCTCTCCAAGTTCTACCAGCCCTACA
 GTGAAGATACACAACAGCAAATCATCAGGGAGACTTCCATTTGGTATCTAAGAGAGATGAAAATGTTTG
 TAATTTCTAGAAGGAGGATTATTAATTGGAGGATCTGACAACAACTGATTTATAGACATTATGCAACG
 TTATATTTGTCTTCTGTGTGGATTCTTCAGAAAGTGAAGTGGCATTATAGATCTAATTCAGTATTTG
 TGGAAACATTAGACAAATGTTTTGAAAATGTCTGTGAGCTGGATTTGATTTCCATGTAGACAAGGTTCA
 CAATATTCCTGCAGAAATGGTGTGGGGGAATGGTATTGGAGACAAATATGAATGAGATTGTTACACAA
 ATTGATGCACAAAATAAGCTGGAAAATCTGAGGCTGGCTTAGCAGGAGCTCCAGCCCGTCTGTATCAG
 CTGTAAAGAATATGAATCTTCTGAGATCCCAAGAAATATTAACATTGGTGACATCAGTATAAAAGTGCC
 AAACCTGCCCTCTTTAAA

ACGCGTACGCGGCCGCTCGAGCAGAACTCATCTCAGAAGAGGATCTGGCAGCAAATGATATCCTGGATT
 ACAAGGATGACGACGATAAGGTTTAA

Protein Sequence: >RC201566 protein sequence
 Red=Cloning site Green=Tags(s)

MIKAILIFNNHGKPRLSKFYQPYSEDYQQIIRETFHLVSKRDENVCFLEGGLLIGGSDNKLIRHYAT
 LYFVFCVDSSESELGILDLIQVFVETLDKCFENVCELDLIFHVDKVHNI LAEMVMGGMVLETNMNEIVTQ
 IDAQNKLEKSEAGLAGAPARAVSAVKNMNLP EIPRNINIGDISIKVPLPSFK

TRTRPLEQKLISEEDLAANDILDYKDDDDKV



Chromatograms: https://cdn.origene.com/chromatograms/mk6300_d05.zip

Restriction Sites: SgfI-MluI

Cloning Scheme:



ACCN: NM_001284

ORF Size: 579 bp

OTI Disclaimer: The molecular sequence of this clone aligns with the gene accession number as a point of reference only. However, individual transcript sequences of the same gene can differ through naturally occurring variations (e.g. polymorphisms), each with its own valid existence. This clone is substantially in agreement with the reference, but a complete review of all prevailing variants is recommended prior to use. [More info](#)

OTI Annotation: This clone was engineered to express the complete ORF with an expression tag. Expression varies depending on the nature of the gene.

Components: The ORF clone is ion-exchange column purified and shipped in a 2D barcoded Matrix tube containing 10ug of transfection-ready, dried plasmid DNA (reconstitute with 100 ul of water).

Reconstitution Method:

1. Centrifuge at 5,000xg for 5min.
2. Carefully open the tube and add 100ul of sterile water to dissolve the DNA.
3. Close the tube and incubate for 10 minutes at room temperature.
4. Briefly vortex the tube and then do a quick spin (less than 5000xg) to concentrate the liquid at the bottom.
5. Store the suspended plasmid at -20°C. The DNA is stable for at least one year from date of shipping when stored at -20°C.

RefSeq: [NM_001284.4](#)

RefSeq Size: 1313 bp

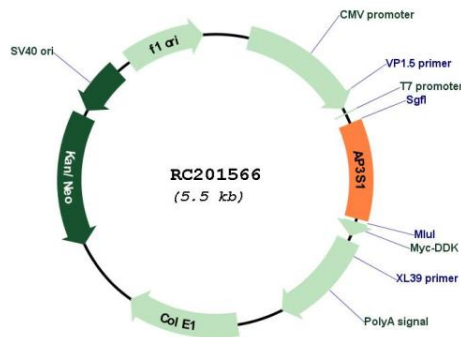
RefSeq ORF: 582 bp

Locus ID: 1176

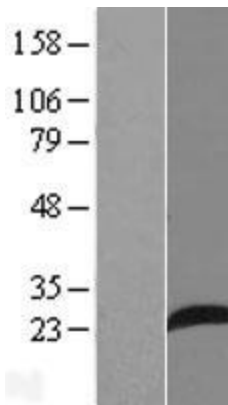
UniProt ID: [Q92572](#)
Cytogenetics: 5q22.3-q23.1
Domains: Clat_adaptor_s
Protein Families: Druggable Genome
Protein Pathways: Lysosome
MW: 21.7 kDa

Gene Summary: This gene encodes a subunit of the AP3 adaptor complex. This complex functions in the formation of subcellular vesicles budded from the Golgi body. Several related pseudogenes of this gene have been found. Alternative splicing results in multiple transcript variants encoding different isoforms. [provided by RefSeq, Dec 2015]

Product images:



Circular map for RC201566



Western blot validation of overexpression lysate (Cat# [LY420033]) using anti-DDK antibody (Cat# [TA50011-100]). Left: Cell lysates from untransfected HEK293T cells; Right: Cell lysates from HEK293T cells transfected with RC201566 using transfection reagent MegaTran 2.0 (Cat# [TT210002]).