

## Product datasheet for RC201565

### CSRP2 (NM\_001321) Human Tagged ORF Clone

#### Product data:

**Product Type:** Expression Plasmids  
**Product Name:** CSRP2 (NM\_001321) Human Tagged ORF Clone  
**Tag:** Myc-DDK  
**Symbol:** CSRP2  
**Synonyms:** CRP2; LMO5; SmLIM  
**Mammalian Cell Selection:** Neomycin  
**Vector:** pCMV6-Entry (PS100001)  
**E. coli Selection:** Kanamycin (25 ug/mL)  
**ORF Nucleotide Sequence:** >RC201565 ORF sequence  
 Red=Cloning site Blue=ORF Green=Tags(s)

TTTTGTAATACGACTCACTATAGGGCGGCCGGAATTCGTCGACTGGATCCGGTACCGAGGAGATCTGCC  
 GCCCGGATCGCC

ATGCTGTCTGGGGAGGTGGAACAAGTGTGGGCCTGTGGGAGGACCGTGTACCACGCAGAAGAGGTGC  
 AGTGTGATGGCAGGAGCTTCCACCGCTGCTGCTTCTCTGCATGGTTTGCAGGAAAAATTTAGATAGCAC  
 AACAGTGGCAATTCACGATGAAGAGATCTACTGCAATCTGCTACGAAAGAAGTATGGGCCAAAAGGC  
 TACGGTTATGGCCAGGGCGCTGGCAGCTTAACATGGACCGTGGCAGAGGCTGGGCATCAAACAGAGA  
 GTGTTTCAGCCTCACAGGCCTACAACAAATCCAAACACTTCTAAATTTGCTCAGAAATATGGAGGTGCTGA  
 GAAGTGTTCAGATGTGGGGATTCTGTATATGCTGCCGAGAAGATAATTGGAGCTGGAAAGCCCTGGCAC  
 AAAAAGTGTTCAGATGTGCAAAGTGTGGGAAGAGTCTTGAATCAACAACTCTGACTGAAAAAGAAGGTG  
 AAATCTATTGTAAGGATGCTATGCAAAGAAGTCTTGGGCCAAGGGATTTGGCTATGGCCAAGGAGCAGG  
 GGCTCTTGTTTCATGCCAG

ACGCGTACGCGGCCGCTCGAGCAGAACTCATCTCAGAAGAGGATCTGGCAGCAATGATATCCTGGATT  
 ACAAGGATGACGACGATAAGGTTTAA

**Protein Sequence:** >RC201565 protein sequence  
 Red=Cloning site Green=Tags(s)

MPVWGGGNKCGACGRVYHAEVQCDGRSFHRCCFLCMVCRKNLDSTTVAIHDEEYCKSCYKGYGPKG  
 YGYGQAGTLNMDRGERLGIKPEVQPHRPTTNPNTSKFAQKYGGAEKCSRCDVYAAEKIIGAGKPDH  
 KNCFRCAKCGKSLESTLLEKEGEIYCKGKYAKNFGPKGFYGYGQAGALVHAQ

TRTRPLEQKLISEEDLAANDILDYKDDDDKV



**Chromatograms:** [https://cdn.origene.com/chromatograms/mk6025\\_a06.zip](https://cdn.origene.com/chromatograms/mk6025_a06.zip)

**Restriction Sites:** SgfI-MluI

**Cloning Scheme:**



**ACCN:** NM\_001321

**ORF Size:** 579 bp

**OTI Disclaimer:** The molecular sequence of this clone aligns with the gene accession number as a point of reference only. However, individual transcript sequences of the same gene can differ through naturally occurring variations (e.g. polymorphisms), each with its own valid existence. This clone is substantially in agreement with the reference, but a complete review of all prevailing variants is recommended prior to use. [More info](#)

**OTI Annotation:** This clone was engineered to express the complete ORF with an expression tag. Expression varies depending on the nature of the gene.

**Components:** The ORF clone is ion-exchange column purified and shipped in a 2D barcoded Matrix tube containing 10ug of transfection-ready, dried plasmid DNA (reconstitute with 100 ul of water).

**Reconstitution Method:**

1. Centrifuge at 5,000xg for 5min.
2. Carefully open the tube and add 100ul of sterile water to dissolve the DNA.
3. Close the tube and incubate for 10 minutes at room temperature.
4. Briefly vortex the tube and then do a quick spin (less than 5000xg) to concentrate the liquid at the bottom.
5. Store the suspended plasmid at -20°C. The DNA is stable for at least one year from date of shipping when stored at -20°C.

**RefSeq:** [NM\\_001321.3](#)

**RefSeq Size:** 940 bp

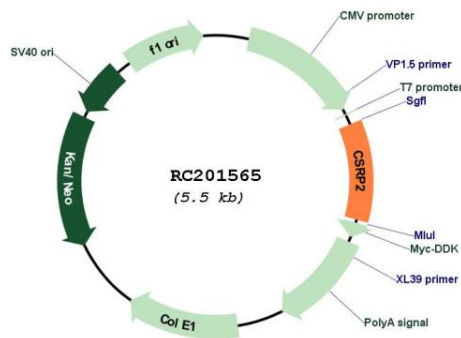
**RefSeq ORF:** 582 bp

**Locus ID:** 1466

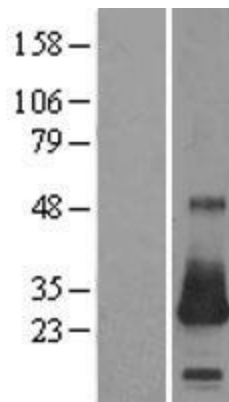
**UniProt ID:** [Q16527](#)  
**Cytogenetics:** 12q21.2  
**Domains:** LIM  
**MW:** 21 kDa

**Gene Summary:** CSR2 is a member of the CSR family of genes, encoding a group of LIM domain proteins, which may be involved in regulatory processes important for development and cellular differentiation. CRP2 contains two copies of the cysteine-rich amino acid sequence motif (LIM) with putative zinc-binding activity, and may be involved in regulating ordered cell growth. Other genes in the family include CSR1 and CSR3. Alternative splicing results in multiple transcript variants. [provided by RefSeq, Jul 2014]

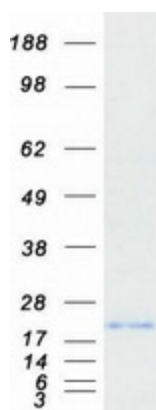
### Product images:



Circular map for RC201565



Western blot validation of overexpression lysate (Cat# [LY400526]) using anti-DDK antibody (Cat# [TA50011-100]). Left: Cell lysates from untransfected HEK293T cells; Right: Cell lysates from HEK293T cells transfected with RC201565 using transfection reagent MegaTran 2.0 (Cat# [TT210002]).



Coomassie blue staining of purified CSRP2 protein (Cat# [TP301565]). The protein was produced from HEK293T cells transfected with CSRP2 cDNA clone (Cat# RC201565) using MegaTran 2.0 (Cat# [TT210002]).