

Product datasheet for **RC201560**

IFRD1 (NM_001007245) Human Tagged ORF Clone

Product data:

Product Type:	Expression Plasmids
Product Name:	IFRD1 (NM_001007245) Human Tagged ORF Clone
Tag:	Myc-DDK
Symbol:	IFRD1
Synonyms:	PC4; TIS7
Mammalian Cell Selection:	Neomycin
Vector:	pCMV6-Entry (PS100001)
E. coli Selection:	Kanamycin (25 ug/mL)



[View online »](#)

ORF Nucleotide Sequence:

>RC201560 ORF sequence
 Red=Cloning site Blue=ORF Green=Tags(s)

TTTTGTAATACGACTCACTATAGGGCGGCCGGAATTCGTCGACTGGATCCGGTACCGAGGAGATCTGCC
 GCC**GCGATCGCC**

ATGCCGAAGAACAAGAAGCGGAACACTCCCCACCGCGGTAGCAGTGCTGGCGGCGCGGGTCAGGAGCAG
 CCGCAGCGACGGCGGCGACAGCAGGTGGCCAGCATCGAAATGTTACGCCTTTTAGTGATGAAGATGCATC
 AATTGAAACAATGAGCCATTGCAGTGGTTATAGCGATCCTTCCAGTTTTGCTGAAGATGGACCAGAAGTC
 CTTGATGAGGAAGGAAGCAAGAAGACCTAGAGTACAAGTTGAAGGGATTAATTGACCTAACCTGGATA
 AGAGTGCAGAACAGGCAAGCAGCTCTTGAAGGTATTAATAATGCAGTGGCTTCAAAAATGCTGTATGA
 ATTTATCTGAAAGGAGAATGACTTTAACTGATAGCATTGAACGCTGCCTGAAAAAGGTAAGAGTGAT
 GAGCAACGTGCAGCTGCAGCGTTAGCATCTGTTCTTTGTATTAGCTGGGCCCTGGAATTGAAAGTGAAG
 AGATTTTGAAGAACTCTTGACCAATCCTAAAGAAAATCATTGTGATGGGTGAGTGTAGCAGGCTAG
 GCAAACCTTGCAACTTGTCTTGGTGTGTTGCTGTTTTATTGCCACAGATGACATTACTGAACTATACTCA
 ACTCTGGAATGTTTGGAAAATATCTTCACTAAATCCTATCTCAAAGAGAAAGACACTACTGTTATTTGCA
 GCACTCCTAATACAGTGCTTCATATCAGCTCTCTTCTTGCATGGACACTACTGCTGACCATATGCCCAAT
 CAATGAAGTGAAGAAAAGCTTGAGATGCATTTCCATAAGCTTCCAAGCCTCCTCTTGTGATGATGTA
 AACATGAGAATAGCTGCTGGTGAATCTTTGGCACTTCTCTTGAATTGGCCAGAGGAATAGAGAGTGACT
 TTTTTATGAAGACATGGAGTCTTGGACGAGATGCTTAGGGCCTGGCAACAGATGGAATAAACACCG
 GGCCAAAGTGGACAAGAGAAAGCAGCGGTGAGTTTTCAGAGATGCTGAGGGCAGTGGAGAACGGGAT
 TTTCCAACAGAAACCATTAATTTGGTCTGAACGCATGTATATTGATTGCTGGGTAAAAAACACACCT
 ATGACACCTTTAAGGAGTTCTTGGATCAGGGATGCAGTACCAGTCAAATGAATTCCTTCGAAA
 TGTATTTGAAGTGGACCCAGTGTGCTTGTGCTGCAACGCTTAAAACGATGAAGATTCTCGTTTC
 GAAAGGCATTTATATAACTCTGCAGCCTTCAAAGCTCGAACCAAAGCTAGAAGCAAATGTCGAGATAAGA
 GAGCAGATGTTGGAGAATTCTTC

ACGCGTACGCGGCCGCTCGAGCAGAAACTCATCTCAGAAGAGGATCTGGCAGCAAATGATATCCTGGATT
 ACAAGGATGACGACGATAAGGTTTAA

Protein Sequence:

>RC201560 protein sequence
 Red=Cloning site Green=Tags(s)

MPKNKKRNTPHRGSSAGGGGSGAAAATAATAGGQHRNVQPFSDASDIETMSHCSGYSDFSSFAEDGPEV
 LDEEGTQEDLEYKLGKGLIDLTDKSAKTRQAALLEGIKNALASKMLYEFILERRMTLTDSEIERCLKKGGKSD
 EQRAAAALASVLCIQLGPGIESEEILKTLGPILKKIICDGSASMQRQTCAFCFVCCFIATDDITELYS
 TLECLENIFTKSYLKEKDTTVICSTPNTVLHISLLAWTLLLITCPINEVKKKLEMHFKLPSLLSCDDV
 NMRIAAGESLALLFELARGIESDFFYEDMESLTQMLRALATDGNKHRKVDKQRQSVFRDVLRAVEERD
 FPTETIKFGPERMYIDCWVKKHTYDTFKEVLGSGMQYHLQSNFLRNVFELGPPVMLDAATLKTMKISRF
 ERHLYNSAAFKARTKARSKCRDKRADVGEFF

TRTRPLEQKLISEEDLAANDILDYKDDDDKV

Chromatograms:

https://cdn.origene.com/chromatograms/mk6541_f05.zip

Restriction Sites:

Sgfl-Mlul

Cloning Scheme:


ACCN: NM_001007245

ORF Size: 1353 bp

OTI Disclaimer: The molecular sequence of this clone aligns with the gene accession number as a point of reference only. However, individual transcript sequences of the same gene can differ through naturally occurring variations (e.g. polymorphisms), each with its own valid existence. This clone is substantially in agreement with the reference, but a complete review of all prevailing variants is recommended prior to use. [More info](#)

OTI Annotation: This clone was engineered to express the complete ORF with an expression tag. Expression varies depending on the nature of the gene.

Components: The ORF clone is ion-exchange column purified and shipped in a 2D barcoded Matrix tube containing 10ug of transfection-ready, dried plasmid DNA (reconstitute with 100 ul of water).

Reconstitution Method:

1. Centrifuge at 5,000xg for 5min.
2. Carefully open the tube and add 100ul of sterile water to dissolve the DNA.
3. Close the tube and incubate for 10 minutes at room temperature.
4. Briefly vortex the tube and then do a quick spin (less than 5000xg) to concentrate the liquid at the bottom.
5. Store the suspended plasmid at -20°C. The DNA is stable for at least one year from date of shipping when stored at -20°C.

Note: Plasmids are not sterile. For experiments where strict sterility is required, filtration with 0.22um filter is required.

RefSeq: [NM_001007245.2](#)

RefSeq Size: 3514 bp

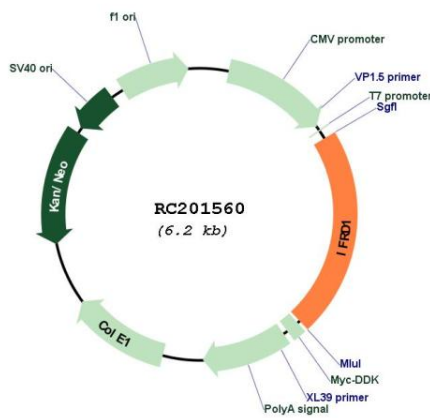
RefSeq ORF: 1356 bp

Locus ID: 3475

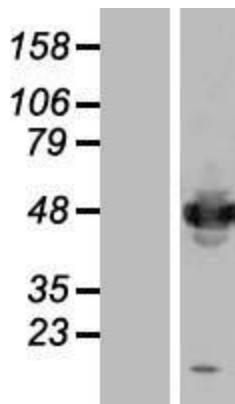
UniProt ID: [O00458](#)
Cytogenetics: 7q31.1
MW: 50.3 kDa

Gene Summary: This gene is an immediate early gene that encodes a protein related to interferon-gamma. This protein may function as a transcriptional co-activator/repressor that controls the growth and differentiation of specific cell types during embryonic development and tissue regeneration. Mutations in this gene are associated with sensory/motor neuropathy with ataxia. This gene may also be involved in modulating the pathogenesis of cystic fibrosis lung disease. Alternate splicing results in multiple transcript variants. [provided by RefSeq, Oct 2010]

Product images:



Circular map for RC201560



Western blot validation of overexpression lysate (Cat# [LY419866]) using anti-DDK antibody (Cat# [TA50011-100]). Left: Cell lysates from untransfected HEK293T cells; Right: Cell lysates from HEK293T cells transfected with [RC217538] using transfection reagent MegaTran 2.0 (Cat# [TT210002]).