

Product datasheet for **RC201554**

Ribophorin I (RPN1) (NM_002950) Human Tagged ORF Clone

Product data:

Product Type:	Expression Plasmids
Product Name:	Ribophorin I (RPN1) (NM_002950) Human Tagged ORF Clone
Tag:	Myc-DDK
Symbol:	Ribophorin I
Synonyms:	OST1; RBPH1
Mammalian Cell Selection:	Neomycin
Vector:	pCMV6-Entry (PS100001)
E. coli Selection:	Kanamycin (25 ug/mL)



[View online »](#)

ORF Nucleotide Sequence:

>RC201554 ORF sequence
 Red=Cloning site Blue=ORF Green=Tags(s)

TTTTGTAATACGACTCACTATAGGGCGGCCGGGAATTCGTCGACTGGATCCGGTACCGAGGAGATCTGCC
 GCC**CGCATCGCC**

ATGGAGGCGCCAGCCCGGCTTGTCTCTGCTGTTGCTTGGACTTGGGCCCGCGCCGGGACGG
 CCTCCTCCGAGGCACCGCGCTGATCAATGAGGACGTGAAGCGCACAGTGGACCTAAGCAGCCACCTGGC
 TAAGGTGACGGCCGAGGTGGTCTGCGCACCTGGGCGCGGCTCCACGTCCCGAGCTACCTCTTCTCTG
 CTGGCTTTGGAGCCTGAGCTCGAGGCCCGGCTGGCGCACCTGGGCGTGCAGGTAAAGGGAGAAGATGAGG
 AAGAGAACAATTTGGAAGTACGTGAAACAAAATTAAGGGTAAAAGTGGGAGATTCTTACAGTCAAGCT
 CCCAGTTGCTCTGATCTGGGGCAAGATTTAGTCACTTGTGGAACAGTCTACACCCATGTGCTTCAT
 CCATATCCAACCCAGATCACCCAGTCAGAGAAACAGTTTGTGGTGTGGAGGGAACCATATTTCTACT
 CTCCTATCCAACGAAGACACAAACCATGCGTGTGAAGCTTGCCTCTCGAAATGTGGAGAGCTACACCAA
 GCTGGGGAACCCACGCGCTCTGAGGACCTACTGGATTATGGGCCTTTCAGAGATGTGCCTGCCTATAGT
 CAGGATACTTTAAAGTACATTATGAGAACAACAGCCCTTTCCTGACCATACCAGCATGACCCGAGTCA
 TTGAAGTCTCTACTGGGTAATATTGCTGTGGAAGAAAATGTGGACTTAAAGCACACAGGAGCTGTGCT
 TAAGGGGCTTTCTCACGCTATGATTACCAGAGACAGCCAGATAGTGGAAATATCCTCCATCCGTTCTTTT
 AAGACCATCCTTCTGCTGCTGCCAGGATGTTTATTACCGGGATGAGATTGGCAATGTTTCTACCAGCC
 ACCTCCTATTTTGGATGACTCTGTAGAGATGAAATCCGGCCTCGTTCCTCTCTTTGGCGGGTGAA
 GACCCATTACATCGTTGGCTACAACCTCCAAGCTATGAGTACCTCTATAATTTGGGTGACCAGTATGCA
 CTGAAGATGAGGTTTGTGGACCATGTGTTTGTGAAACAAGTATAGATTCTCTGACTGTGAAGATCATCC
 TGCTGAAGGAGCCAAGAACATTGAAATGATAGTCCCTATGAAATCAGCCGTGCCCCAGTGTGAGTGA
 CTACACCTATCTGGATACATTTGGCCCGCTGTGATTGTTGCCTACAAGAAAAATCTGGTGAACAGCAC
 ATTCAGGACATTGGTCCACTACACGTTCAACAAGGTGCTCATGCTGCAGGAGCCCTGCTGGTGGTGG
 CGGCTTCTACATCCTGTTCTTACCCTTATCATCTATGTTTCGGCTGGACTTCTCCATCACCAAGGATCC
 AGCCGAGAAAGCCAGGATGAAGGTAGCCTGCATCACAGAGCAGGTCTTGACCCTGGTCAACAAGAGAATA
 GGCCTTACCCTCACTTTGACGAGACCGTCAATAGGTACAAGCAATCCCGGACATCTCCACCCTCAACA
 GTGGCAAGAAGAGCCTGGAGACTGAACACAAGGCCTTGACCAGTGAAGTGCAGTGCAGTCCAGGCT
 GAAGACAGAGGGCTCTGATCTGTGCGACAGAGTGAAGCAATGCAGAAGCTGGATGCACAGTCAAGGAG
 CTGGTGTGAAGTCGGCGGTGGAGGCTGAGCGCCTGGTGGCTGGCAAGCTCAAGAAGACACGTACATTG
 AGAATGAGAAGCTCATCTCAGGAAAGCGCCAGGAGCTGGTACCAAGATCGACCACATCCTGGATGCCCT
 G

ACGCGTACGCGGCCGCTCGAGCAGAAACTCATCTCAGAAGAGGATCTGGCAGCAAATGATATCCTGGATT
 ACAAGGATGACGACGATAAGGTTTAA

Protein Sequence:

>RC201554 protein sequence
 Red=Cloning site Green=Tags(s)

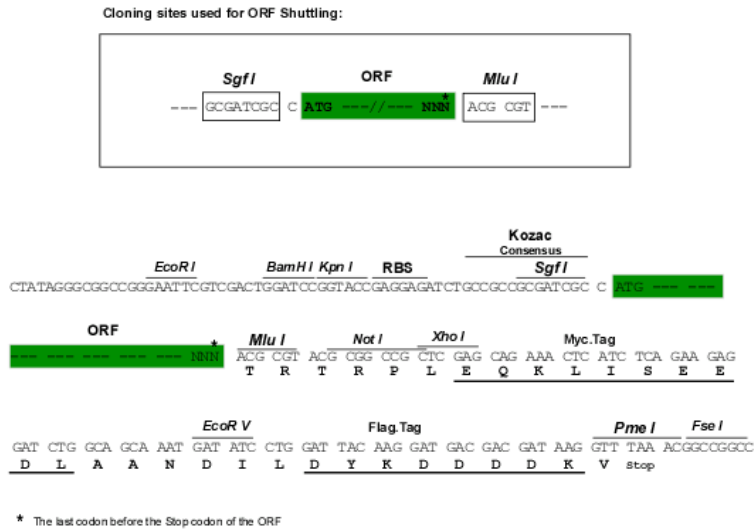
MEAPAAGLFLLLLGTWAPAGSASSEAPPLINEDVKRTVDLSSHLAKVTAEVVLAHLGGGSTRATSFL
 LALEPELEARLAHLGVQVKGEDEEENLEVRETIKKGSGRFFTVKLPVALDPGAKISVIVETVYTHVLH
 PYPTQITQSEKQFVVFEGNHFYSPYPTKTQTMRVKLASRNVESYTKLGNPTRSEDLDDYGPFRDVPAYS
 QDTFKVHYENNSPFLTITSMTRVIEVSHWGNIAVEENVDLKHTGAVLKGPF SRYDYQRQPDSSIRSF
 KTIIPAAAQDVYYRDEIGNVSTSHLLILDDSVEMEIRPRFPLFGGWKTHYIVGYNLPSEYLYNLGDQYA
 LKMRFDVHVFDEQVIDSLTVKIIILPEGAKNIEIDSPYEISRAPDELHYTYLDTFGRPVIVAYKKNLVEQH
 IQDIIVVHYTFNKVLMQEP LLVVAIFYILFFTVIIYVRLDFSITKDPAAEARMKVACITEQVLT LNKRI
 GLYRHFDETVNRYKQSRD I STLNSGKKSLETEHKALTSEIALLQSRLKTEGSDLCDRVSEMQKLDQVKE
 LVLKSAVEAERL VAGLKKDITYIENEKLSGKRQELVTKIDHILDAL

TRTRPLEQKLISEEDLAANDILDYKDDDDKV

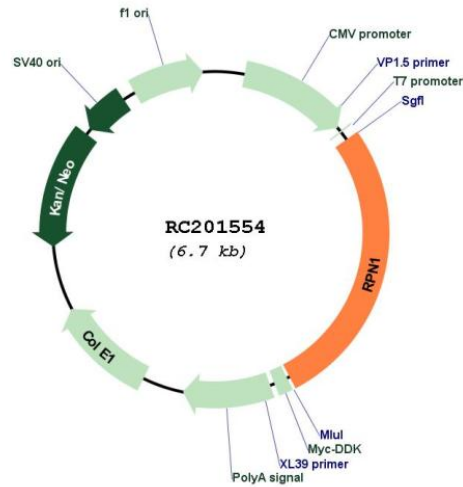
Chromatograms: https://cdn.origene.com/chromatograms/mk6232_e02.zip

Restriction Sites: SgfI-MluI

Cloning Scheme:



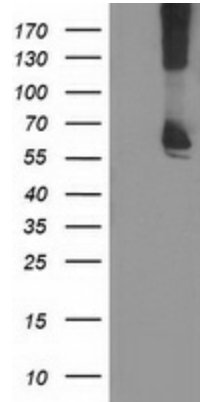
Plasmid Map:



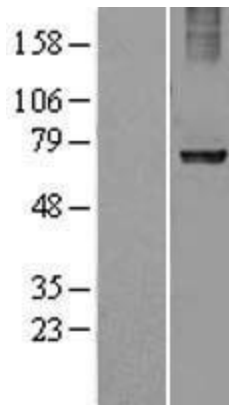
ACCN: NM_002950

ORF Size: 1821 bp

OTI Disclaimer:	The molecular sequence of this clone aligns with the gene accession number as a point of reference only. However, individual transcript sequences of the same gene can differ through naturally occurring variations (e.g. polymorphisms), each with its own valid existence. This clone is substantially in agreement with the reference, but a complete review of all prevailing variants is recommended prior to use. More info
OTI Annotation:	This clone was engineered to express the complete ORF with an expression tag. Expression varies depending on the nature of the gene.
Components:	The ORF clone is ion-exchange column purified and shipped in a 2D barcoded Matrix tube containing 10ug of transfection-ready, dried plasmid DNA (reconstitute with 100 ul of water).
Reconstitution Method:	<ol style="list-style-type: none">1. Centrifuge at 5,000xg for 5min.2. Carefully open the tube and add 100ul of sterile water to dissolve the DNA.3. Close the tube and incubate for 10 minutes at room temperature.4. Briefly vortex the tube and then do a quick spin (less than 5000xg) to concentrate the liquid at the bottom.5. Store the suspended plasmid at -20°C. The DNA is stable for at least one year from date of shipping when stored at -20°C.
RefSeq:	NM_002950.2
RefSeq Size:	2372 bp
RefSeq ORF:	1824 bp
Locus ID:	6184
UniProt ID:	P04843
Cytogenetics:	3q21.3
Domains:	Ribophorin_I
Protein Families:	Transmembrane
Protein Pathways:	Metabolic pathways, N-Glycan biosynthesis
MW:	68.6 kDa
Gene Summary:	This gene encodes a type I integral membrane protein found only in the rough endoplasmic reticulum. The encoded protein is part of an N-oligosaccharyl transferase complex that links high mannose oligosaccharides to asparagine residues found in the Asn-X-Ser/Thr consensus motif of nascent polypeptide chains. This protein forms part of the regulatory subunit of the 26S proteasome and may mediate binding of ubiquitin-like domains to this proteasome. [provided by RefSeq, Jul 2008]

Product images:


HEK293T cells were transfected with the pCMV6-ENTRY control (Cat# [PS100001], Left lane) or pCMV6-ENTRY RPN1 (Cat# RC201554, Right lane) cDNA for 48 hrs and lysed. Equivalent amounts of cell lysates (5 ug per lane) were separated by SDS-PAGE and immunoblotted with anti-RPN1 (Cat# [TA503649]). Positive lysates [LY418997] (100ug) and [LC418997] (20ug) can be purchased separately from OriGene.



Western blot validation of overexpression lysate (Cat# [LY418997]) using anti-DDK antibody (Cat# [TA50011-100]). Left: Cell lysates from untransfected HEK293T cells; Right: Cell lysates from HEK293T cells transfected with RC201554 using transfection reagent MegaTran 2.0 (Cat# [TT210002]).



Coomassie blue staining of purified RPN1 protein (Cat# [TP301554]). The protein was produced from HEK293T cells transfected with RPN1 cDNA clone (Cat# RC201554) using MegaTran 2.0 (Cat# [TT210002]).