

Product datasheet for RC201548

TIMP1 (NM_003254) Human Tagged ORF Clone

Product data:

Product Type: Expression Plasmids
Product Name: TIMP1 (NM_003254) Human Tagged ORF Clone
Tag: Myc-DDK
Symbol: TIMP1
Synonyms: CLGI; EPA; EPO; HCI; TIMP; TIMP-1
Mammalian Cell Selection: Neomycin
Vector: pCMV6-Entry (PS100001)
E. coli Selection: Kanamycin (25 ug/mL)
ORF Nucleotide Sequence: >RC201548 ORF sequence
 Red=Cloning site Blue=ORF Green=Tags(s)

TTTTGTAATACGACTCACTATAGGGCGGCCGGAATTCGTCGACTGGATCCGGTACCGAGGAGATCTGCC
 GCC**CGATCGCC**

ATGGCCCCCTTTGAGCCCTGGCTTCTGGCATCCTGTTGTTGCTGTGGCTGATAGCCCCAGCAGGGCCT
 GCACCTGTGTCCCACCCACCCACAGACGGCTTCTGCAATTCGACCTCGTCATCAGGGCCAAGTTCGT
 GGGGACACCAGAAGTCAACCAGACCACCTTATACCAGCGTTATGAGATCAAGATGACCAAGATGTATAAA
 GGGTTCCAAGCCTTAGGGGATGCCGCTGACATCCGGTTCGCTACACCCCGCCATGGAGAGTGTCTGCC
 GATACTCCACAGTCCCACAACCGCAGCGAGGAGTTTCTCATTGCTGGAAAAGTGCAGGATGGACTCTT
 GCACATCACTACCTGCAGTTTCGTGGCTCCCTGGAACAGCCTGAGCTTAGCTCAGCGCCGGGGCTTACC
 AAGACCTACACTGTTGGCTGTGAGGAATGCACAGTGTTCCTGTTTATCCATCCCCTGCAAAGTGCAGA
 GTGGCACTCATTGCTGTGGACGGACAGCTCCTCCAAGGCTCTGAAAAGGGCTTCCAGTCCCGTACCT
 TGCTGCTGCCTCGGGAGCCAGGGCTGTGCACCTGGCAGTCCCTGCGGTCCCAGATAGCC

ACGCGTACGCGGCCGCTCGAGCAGAAAAGTCTCAGAAGAGGATCTGGCAGCAAATGATATCCTGGATT
 ACAAGGATGACGACGATAAGGTTTAA

Protein Sequence: >RC201548 protein sequence
 Red=Cloning site Green=Tags(s)

MAPFEPLASGILLLLWL IAPSRACCTVPPHPQTAF CNSDLVIRAKFVGTPEVNQTTL YQRYEIKMTKMYK
 GFQALGDAADIRFVYTPAMESVCGYFHRSHNRSEEF LIAGKLQDGLLHITTSFVAPWNSLSLAQRRGFT
 KTYTVGCEECTVFPCLSI PCKLQSGTHCLWTDQLLQ GSEKGFQSRHLACLPREPGLCTWQSLRSQIA

TRTRPLEQKLISEEDLAANDILDYKDDDDKV



Chromatograms: https://cdn.origene.com/chromatograms/mk6287_c01.zip

Restriction Sites: Sgfl-MluI

Cloning Scheme:



ACCN: NM_003254

ORF Size: 621 bp

OTI Disclaimer: Due to the inherent nature of this plasmid, standard methods to replicate additional amounts of DNA in *E. coli* are highly likely to result in mutations and/or rearrangements. Therefore, OriGene does not guarantee the capability to replicate this plasmid DNA. Additional amounts of DNA can be purchased from OriGene with batch-specific, full-sequence verification at a reduced cost. Please contact our customer care team at custsupport@origene.com or by calling 301.340.3188 option 3 for pricing and delivery.

The molecular sequence of this clone aligns with the gene accession number as a point of reference only. However, individual transcript sequences of the same gene can differ through naturally occurring variations (e.g. polymorphisms), each with its own valid existence. This clone is substantially in agreement with the reference, but a complete review of all prevailing variants is recommended prior to use. [More info](#)

OTI Annotation: This clone was engineered to express the complete ORF with an expression tag. Expression varies depending on the nature of the gene.

Components: The ORF clone is ion-exchange column purified and shipped in a 2D barcoded Matrix tube containing 10ug of transfection-ready, dried plasmid DNA (reconstitute with 100 ul of water).

Reconstitution Method:

1. Centrifuge at 5,000xg for 5min.
2. Carefully open the tube and add 100ul of sterile water to dissolve the DNA.
3. Close the tube and incubate for 10 minutes at room temperature.
4. Briefly vortex the tube and then do a quick spin (less than 5000xg) to concentrate the liquid at the bottom.
5. Store the suspended plasmid at -20°C. The DNA is stable for at least one year from date of shipping when stored at -20°C.

Note: Plasmids are not sterile. For experiments where strict sterility is required, filtration with 0.22um filter is required.

RefSeq: [NM_003254.1](#)

RefSeq Size: 931 bp

RefSeq ORF: 624 bp

Locus ID: 7076

UniProt ID: [P01033](#)

Cytogenetics: Xp11.3

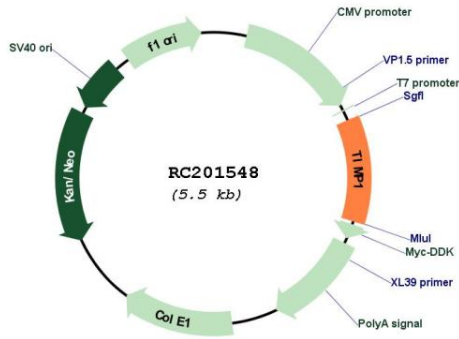
Domains: NTR

Protein Families: Druggable Genome, Secreted Protein

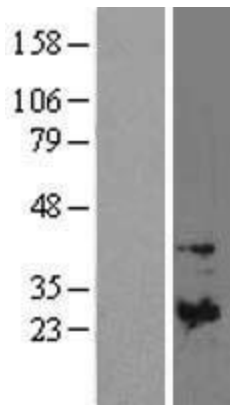
MW: 23.2 kDa

Gene Summary: This gene belongs to the TIMP gene family. The proteins encoded by this gene family are natural inhibitors of the matrix metalloproteinases (MMPs), a group of peptidases involved in degradation of the extracellular matrix. In addition to its inhibitory role against most of the known MMPs, the encoded protein is able to promote cell proliferation in a wide range of cell types, and may also have an anti-apoptotic function. Transcription of this gene is highly inducible in response to many cytokines and hormones. In addition, the expression from some but not all inactive X chromosomes suggests that this gene inactivation is polymorphic in human females. This gene is located within intron 6 of the synapsin I gene and is transcribed in the opposite direction. [provided by RefSeq, Jul 2008]

Product images:



Circular map for RC201548



Western blot validation of overexpression lysate (Cat# [LY418808]) using anti-DDK antibody (Cat# [TA50011-100]). Left: Cell lysates from untransfected HEK293T cells; Right: Cell lysates from HEK293T cells transfected with RC201548 using transfection reagent MegaTran 2.0 (Cat# [TT210002]).