

## Product datasheet for RC201542

### TRA2B (NM\_004593) Human Tagged ORF Clone

#### Product data:

Product Type:	Expression Plasmids
Product Name:	TRA2B (NM_004593) Human Tagged ORF Clone
Tag:	Myc-DDK
Symbol:	TRA2B
Synonyms:	Htra2-beta; PPP1R156; SFRS10; SRFS10; TRA2-BETA; TRAN2B
Mammalian Cell Selection:	Neomycin
Vector:	pCMV6-Entry (PS100001)
E. coli Selection:	Kanamycin (25 ug/mL)
ORF Nucleotide Sequence:	>RC201542 ORF sequence Red=Cloning site Blue=ORF Green=Tags(s)

TTTTGTAATACGACTCACTATAGGGCGGCCGGAATTCGTCGACTGGATCCGGTACCGAGGAGATCTGCC  
GCC**CGATCGCC**

ATGAGCGACAGCGCGGAGCAGAACTACGGCGAGCGGGAATCCCGTTCTGCTTCCAGAAGTGAAGTGCTC  
ACGGATCGGGGAAATCTGCAAGGCATACCCCTGCAAGGTCTCGCTCCAAGGAAGATTCCAGGCGTCCAG  
ATCAAAGTCCAGGTCCCGATCTGAATCTAGGTCTAGATCCAGAAGAAGCTCCCGAAGGCATTATACCCGG  
TCACGGTCTCGTCCCGCTCCCATAGACGATCACGTAGCAGGTCTTACAGTCGAGATTATCGTAGACGGC  
ACAGCCACAGCCATTCTCCCATGTCTACTCGCAGGCGTCATGTTGGGAATCGGGCAAATCCTGATCCTAA  
CTGTTGTCTTGGAGTATTTGGGCTGAGCTTGACACCACAGAAAGAGATCTAAGAGAAGTGTCTCTAAA  
TATGGTCCCATGCGCATGTGTCTATTGTATATGACCAGCAGTCTAGGCGTTCAAGAGGATTTGCCTTTG  
TATATTTTAAAAATGTAGATGATGCCAAGGAAGCTAAAGAACGTGCCAATGGAATGGAGCTTGATGGGCG  
TAGGATCAGAGTTGATTTCTCTATAACAAAAAGACCACATACGCCAACACCAGGAATTTACATGGGGAGA  
CCTACCTATGGCAGCTCTCGCCGTCGGGATTAATGACAGAGGATATGATCGGGGCTATGATGATCGGG  
ACTACTATAGCAGATCATACAGAGGAGGAGGTGGAGGAGGAGGAGGATGGAGAGCTGCCAAAGACAGGGA  
TCAGATTTATAGAAGCGGTACCTTCTCCTTACTATAGTCGTGGAGGATACAGATCACGTTCCAGATCT  
CGATCATACTCACCTCGTCGTAT

**ACGCGT**ACGCGGCCGCTCGAGCAGAAACTCATCTCAGAAGAGGATCTGGCAGCAAATGATATCCTGGATT  
ACAAGGATGACGACGATAAGGTTTAA



[View online »](#)

**Protein Sequence:** >RC201542 protein sequence  
Red=Cloning site Green=Tags(s)

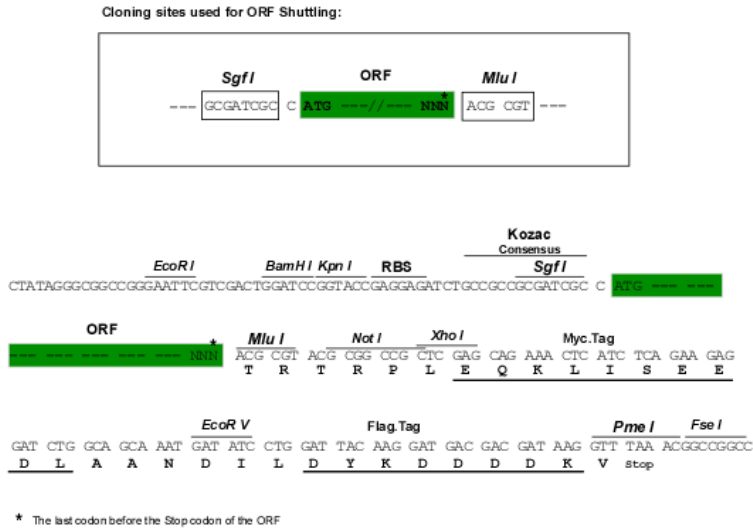
MSDSGEQNYGERESRSASRSGSAHGSGKSARHTPARSRKEDSRRSRKSRSRSESRRSRRSSRRHYTR  
 SRSRSRSHRRSRRSYSRDYRRRHSHSHSPMSTRRRHVGNRANPDNCCLVFGLSLYTTERDLREVFSK  
 YGPIADVSIYDQQRSRSRGFAFVYFENVDDAKEAKERANGMELDGRRI RVDF SITKRPHPTPGIYMGR  
 PTYGSSRRRDYDRGYDRGYDDRDYYSRYRGGGGGGWRAAQDRDQIYRRRSPSPYYSRGGYRSRSRS  
 RSYSPRRY

TRTRPLEQKLISEEDLAANDILDYKDDDDKV

**Chromatograms:** [https://cdn.origene.com/chromatograms/mk6001\\_e05.zip](https://cdn.origene.com/chromatograms/mk6001_e05.zip)

**Restriction Sites:** SgfI-MluI

**Cloning Scheme:**



**ACCN:** NM\_004593

**ORF Size:** 864 bp

**OTI Disclaimer:** The molecular sequence of this clone aligns with the gene accession number as a point of reference only. However, individual transcript sequences of the same gene can differ through naturally occurring variations (e.g. polymorphisms), each with its own valid existence. This clone is substantially in agreement with the reference, but a complete review of all prevailing variants is recommended prior to use. [More info](#)

**OTI Annotation:** This clone was engineered to express the complete ORF with an expression tag. Expression varies depending on the nature of the gene.

**Components:** The ORF clone is ion-exchange column purified and shipped in a 2D barcoded Matrix tube containing 10ug of transfection-ready, dried plasmid DNA (reconstitute with 100 ul of water).

**Reconstitution Method:**

1. Centrifuge at 5,000xg for 5min.
2. Carefully open the tube and add 100ul of sterile water to dissolve the DNA.
3. Close the tube and incubate for 10 minutes at room temperature.
4. Briefly vortex the tube and then do a quick spin (less than 5000xg) to concentrate the liquid at the bottom.
5. Store the suspended plasmid at -20°C. The DNA is stable for at least one year from date of shipping when stored at -20°C.

**Note:** Plasmids are not sterile. For experiments where strict sterility is required, filtration with 0.22um filter is required.

**RefSeq:** [NM\\_004593.3](#)

**RefSeq Size:** 4290 bp

**RefSeq ORF:** 867 bp

**Locus ID:** 6434

**UniProt ID:** [P62995](#)

**Cytogenetics:** 3q27.2

**Domains:** RRM

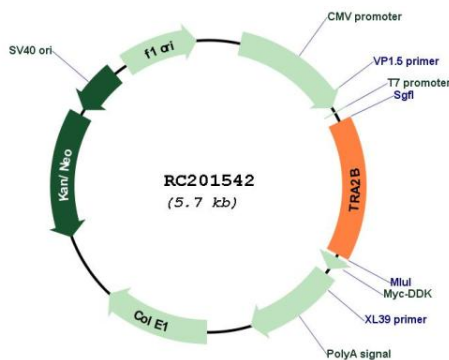
**Protein Families:** Druggable Genome

**Protein Pathways:** Spliceosome

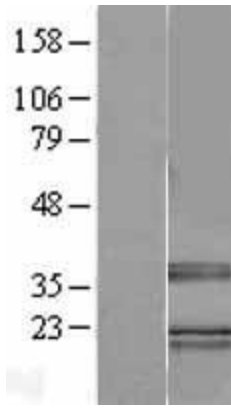
**MW:** 33.7 kDa

**Gene Summary:** This gene encodes a nuclear protein which functions as sequence-specific serine/arginine splicing factor which plays a role in mRNA processing, splicing patterns, and gene expression. Alternative splicing results in multiple transcript variants. [provided by RefSeq, Aug 2011]

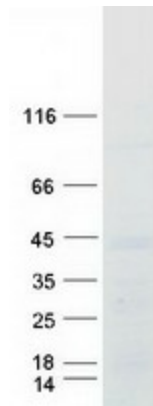
### Product images:



Circular map for RC201542



Western blot validation of overexpression lysate (Cat# [LY401456]) using anti-DDK antibody (Cat# [TA50011-100]). Left: Cell lysates from untransfected HEK293T cells; Right: Cell lysates from HEK293T cells transfected with RC201542 using transfection reagent MegaTran 2.0 (Cat# [TT210002]).



Coomassie blue staining of purified TRA2B protein (Cat# [TP301542]). The protein was produced from HEK293T cells transfected with TRA2B cDNA clone (Cat# RC201542) using MegaTran 2.0 (Cat# [TT210002]).