

Product datasheet for RC201541

SRSF6 (NM_006275) Human Tagged ORF Clone

Product data:

Product Type:	Expression Plasmids
Product Name:	SRSF6 (NM_006275) Human Tagged ORF Clone
Tag:	Myc-DDK
Symbol:	SRSF6
Synonyms:	B52; HEL-S-91; SFRS6; SRP55
Mammalian Cell Selection:	Neomycin
Vector:	pCMV6-Entry (PS100001)
E. coli Selection:	Kanamycin (25 ug/mL)
ORF Nucleotide Sequence:	>RC201541 representing NM_006275 Red=Cloning site Blue=ORF Green=Tags(s)

CTATAGGGCGCCGGAATTCGTCGACTGGATCCGGTACCGAGGAGATCTGCCGCCGCGATCGCCGGCGC
GCC

ATGCCGCGCTACATAGGACGCTGAGCTAACCGTCCGGGAGAAGGACATCCAGCGCTTTTTCAGTG
GCTATGGCCGCTCCTCGAAGTAGACCTCAAAAATGGGTACGGCTTCGTGGAGTTCGAGGACTCCCGCGA
CGCCGACGACGCCGTTTACGAGCTGAACGGCAAGGAGCTCTGCGGCGAGCGGTGATCGTAGAGCACGCC
CGGGGCCGCGTCGCGATCGCGACGGCTACAGCTACGGAAGCCGAGTGGTGGAGGTGGATACAGCAGTC
GGAGAACATCTGGCAGAGACAAAATACGGACCACCTGTTCTGACAGAATACAGGCTTATTGTAGAAAATCT
TTCTAGTCGGTGCAGTTGGCAAGATTTAAAGGATTTTATGCGACAAGCAGGTGAAGTAACCTATGCGGAT
GCCACAAGGAACGAACAAATGAGGGTGTAAATGAGTTTTCGCTCCTACTCTGACATGAAGCGTGCTTTGG
ACAAACTGGATGGCACAGAAAATAAATGGCAGAAAATATTAGGCTTATTGAAGATAAGCCACGCACAAGCCA
TAGGCGATCTTACTCTGGAAGCAGATCCAGGTCTCGATCTAGAAGACGGTACGAAGTAGGAGTCGAGG
AGCAGCCGAGTAGATCTCGAAGTATCTCAAAAAGTCGCTCCCGTTCAGGTCCGGGAGCAAAGGTTCGAT
CACGTTCTCGATCAAAAAGCAGGAAATCTAGATCAAAGAGCAAATCTAAGCCAAAGTCTGATCGGGGCTC
CCATTACATTCTCGAAGCAGATCTAAGGATGAGTATGAGAAAATCTCGAAGCAGGTCTCGGTCCCGATCC
CCCAAAGAAAATGGAAAGGGTGATATAAAGTCAAATCCAGATCAAGGAGCCAGTCCCGTCCAATTCCG
CGCTACCTGTTCCACCCTCAAAGGCCCGTTCTGTGTCCTCCCTCCACCAAAAAGAGCTACTTCAAGATCCCG
TTCTAGATCTCGCTCAAAGTCAAGATCAAGGTCCAGGTCCGAGTCCAGAGAT

ACGCGTACGCGGCCGCTCGAGCAGAAAATCATCTCAGAAGAGGATCTGGCAGCAAATGATATCCTGGATT
ACAAGGATGACGACGATAAGGTTTAA



[View online »](#)

Protein Sequence: >RC201541 representing NM_006275
Red=Cloning site Green=Tags(s)

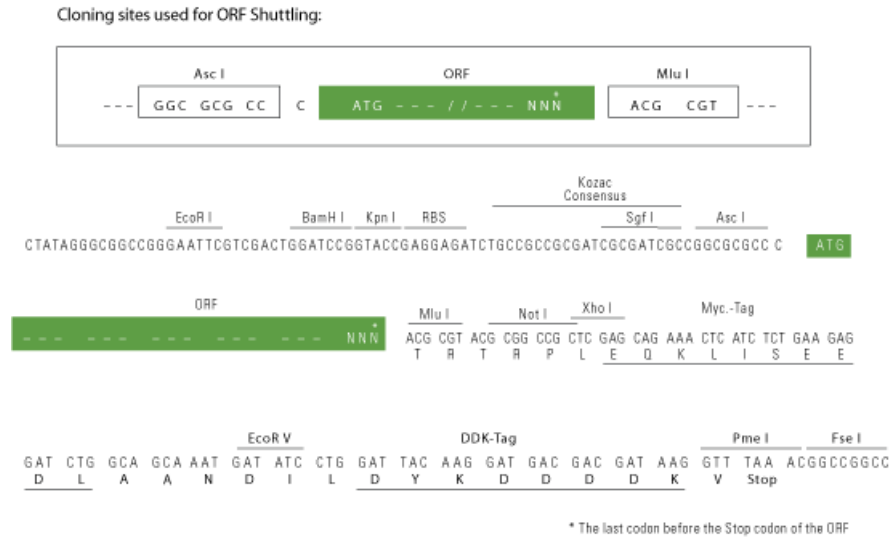
MPRVYIGRLSYNVREKDIQRFFSGYGRLLLEVLDLKNYGFVEFEDSRDADDAVYELNGKELCGERVIVEHA
 RGPRRDRDGYSYGSRSGGGGYSSRRTSGRDKYGPVRYEYRLIVENLSSRCSWQDLKDFMRQAGEVYAD
 AHKERTNEGVIIEFRSYSDMKRALDKLDGTEINGRNIRLIEDKPRTSHRRSYSGRSRSRRRRSR
 SRSRISIKSRSRSRSRKGRSRSRKGRKSRKSKPKSDRGSHSHSRSRKDEYEKSRSRSRSR
 PKENGGDIKSKSRSRSQSRNSPLPVPPSKARSVSPPPKRATSRSRSRSRKSRSRSRSSRD

TRTRPLEQKLISEEDLAANDILDYKDDDDKV

Chromatograms: https://cdn.origene.com/chromatograms/mg4644_h11.zip

Restriction Sites: AscI-MluI

Cloning Scheme:



ACCN: NM_006275

ORF Size: 1032 bp

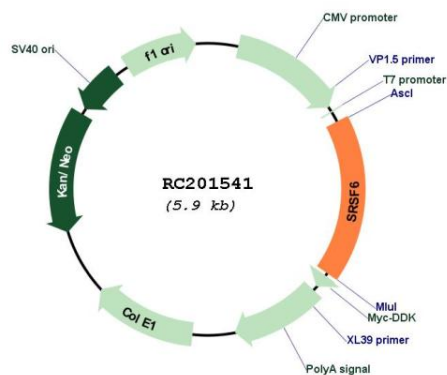
OTI Disclaimer: The molecular sequence of this clone aligns with the gene accession number as a point of reference only. However, individual transcript sequences of the same gene can differ through naturally occurring variations (e.g. polymorphisms), each with its own valid existence. This clone is substantially in agreement with the reference, but a complete review of all prevailing variants is recommended prior to use. [More info](#)

OTI Annotation: This clone was engineered to express the complete ORF with an expression tag. Expression varies depending on the nature of the gene.

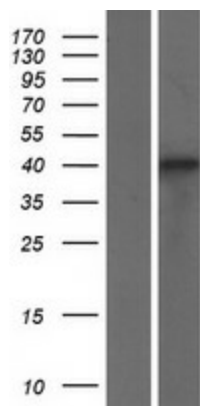
Components: The ORF clone is ion-exchange column purified and shipped in a 2D barcoded Matrix tube containing 10ug of transfection-ready, dried plasmid DNA (reconstitute with 100 ul of water).

Reconstitution Method:	<ol style="list-style-type: none">1. Centrifuge at 5,000xg for 5min.2. Carefully open the tube and add 100ul of sterile water to dissolve the DNA.3. Close the tube and incubate for 10 minutes at room temperature.4. Briefly vortex the tube and then do a quick spin (less than 5000xg) to concentrate the liquid at the bottom.5. Store the suspended plasmid at -20°C. The DNA is stable for at least one year from date of shipping when stored at -20°C.
Note:	Plasmids are not sterile. For experiments where strict sterility is required, filtration with 0.22um filter is required.
RefSeq:	NM_006275.4 , NP_006266.2
RefSeq Size:	3738 bp
RefSeq ORF:	1035 bp
Locus ID:	6431
UniProt ID:	Q13247
Cytogenetics:	20q13.11
Domains:	RRM
Protein Pathways:	Spliceosome
MW:	39.4 kDa
Gene Summary:	The protein encoded by this gene is involved in mRNA splicing and may play a role in the determination of alternative splicing. The encoded nuclear protein belongs to the splicing factor SR family and has been shown to bind with and modulate another member of the family, SFRS12. Alternative splicing results in multiple transcript variants. In addition, two pseudogenes, one on chromosome 17 and the other on the X chromosome, have been found for this gene.[provided by RefSeq, Sep 2010]

Product images:



Circular map for RC201541



Western blot validation of overexpression lysate (Cat# [LY416754]) using anti-DDK antibody (Cat# [TA50011-100]). Left: Cell lysates from untransfected HEK293T cells; Right: Cell lysates from HEK293T cells transfected with RC201541 using transfection reagent MegaTran 2.0 (Cat# [TT210002]).