

Product datasheet for RC201536

WDR68 (DCAF7) (NM_005828) Human Tagged ORF Clone

Product data:

| | |
|---------------------------|---|
| Product Type: | Expression Plasmids |
| Product Name: | WDR68 (DCAF7) (NM_005828) Human Tagged ORF Clone |
| Tag: | Myc-DDK |
| Symbol: | WDR68 |
| Synonyms: | AN11; HAN11; SWAN-1; WDR68 |
| Mammalian Cell Selection: | Neomycin |
| Vector: | pCMV6-Entry (PS100001) |
| E. coli Selection: | Kanamycin (25 ug/mL) |
| ORF Nucleotide Sequence: | >RC201536 ORF sequence Red=Cloning site Blue=ORF Green=Tags(s) |

TTTTGTAATACGACTCACTATAGGGCGGCCGGAATTCGTCGACTGGATCCGGTACCGAGGAGATCTGCC
GCC**CGATCGCC**

ATGTCCCTGCACGGCAAACGGAAGGAGATCTACAAGTATGAAGCGCCCTGGACAGTCTACGCGATGAACT
GGAGTGTGCGGCCGATAAAGCGCTTCGCTTGGCGCTGGGAGCTTCGTGGAGGAGTACAACAACAAGGT
TCAGCTTGTGGTTAGATGAGGAGAGTTCAGAGTTTATTTGCAGAAACACCTTTGACCACCATAACCC
ACCACAAAGCTCATGTGGATCCCTGACACAAAAGGCGTCTATCCAGACCTACTGGCAACAAGCGGTGACT
ATCTCCGTGTGTGGAGGTTGGTGAACAGAGACCAGGCTGGAGTGTGCTAAACAATAAAGAAGTCTC
TGATTTCTGTGCTCCCTGACCTCCTTTGACTGGAATGAGGTGGATCCTTATCTTTAGGTACCTCAAGC
ATTGATACGACATGCACCATCTGGGGGCTGGAGACAGGGCAGGTGTTAGGGCAGTGAATCTCGTGTCTG
GCCACGTGAAGACCCAGCTGATCGCCATGACAAAGAGGTCTATGATATTGCATTTAGCCGGGCCGGGG
TGGCAGGGACATGTTGCCTCTGTGGGTGCTGATGGCTCGGTGCGGATGTTTGACCTCCGCCATCTAGAA
CACAGCACCATCATTTACGAAGACCCACAGCATCACCCACTGCTCGCCTCTGCTGGAACAAGCAGGACC
CTAACTACCTGGCCACCATGGCCATGGATGGAATGGAGGTGGTATTCTAGATGTCCGGTTCCTGCAC
ACCTGTGCCAGGTTAAACAACCATCGAGCATGTGTCAATGGCATTGCTGGGCCCCACATTATCATCTGC
CACATCTGCACTGCAGCGGATGACCACCAGGCTCTCATCTGGGACATCCAGCAAATGCCCGAGCCATTG
AGGACCCTATCCTGGCCTACACAGCTGAAGGAGAGATCAACAATGTGCAGTGGGCATCAACTCAGCCCGA
CTGGATCGCCATCTGCTACAACAACTGCCTGGAGATACTCAGAGTG

ACGCGTACGCGGCCGCTCGAGCAGAAACTCATCTCAGAAGAGGATCTGGCAGCAAATGATATCCTGGATT
ACAAGGATGACGACGATAAGGTTTAA



[View online »](#)

Protein Sequence: >RC201536 protein sequence
Red=Cloning site Green=Tags(s)

MSLHGKRKEIYKYEAPWTVYAMNWSVRPDKRFRALGSGFVEEYNNKVQLVGLDEESSEFICRNTFDHPYP
 TTKLMWIPDTKGVYPDLLATSGDYLRVWRVGETETRLECLLNNKNSDFCAPLTSFDWNEVDPYLLGTSS
 IDTTCTIWGLETGQVLGRVNLVSGHVKTQLIAHDKEVYDIAFSRAGGRDMFASVGDGGSVRFDLRHLE
 HSTIIYEDPQHHPLLRLCWNKQDPNYLATMAMDGMEVVILDVVRPCTPVARLNNHRACVNGIAWAPHSSC
 HICTAADDHQALIWDIQQMPRAIEDPILAYTAEGEINNQQWASTQPDWIAICYNNCLEILRV

TRTRPLEQKLISEEDLAANDILDYKDDDDKV

Chromatograms: https://cdn.origene.com/chromatograms/mk6541_d08.zip

Restriction Sites: SgfI-MluI

Cloning Scheme:



ACCN: NM_005828

ORF Size: 1026 bp

OTI Disclaimer: The molecular sequence of this clone aligns with the gene accession number as a point of reference only. However, individual transcript sequences of the same gene can differ through naturally occurring variations (e.g. polymorphisms), each with its own valid existence. This clone is substantially in agreement with the reference, but a complete review of all prevailing variants is recommended prior to use. [More info](#)

OTI Annotation: This clone was engineered to express the complete ORF with an expression tag. Expression varies depending on the nature of the gene.

Components: The ORF clone is ion-exchange column purified and shipped in a 2D barcoded Matrix tube containing 10ug of transfection-ready, dried plasmid DNA (reconstitute with 100 ul of water).

Reconstitution Method:

1. Centrifuge at 5,000xg for 5min.
2. Carefully open the tube and add 100ul of sterile water to dissolve the DNA.
3. Close the tube and incubate for 10 minutes at room temperature.
4. Briefly vortex the tube and then do a quick spin (less than 5000xg) to concentrate the liquid at the bottom.
5. Store the suspended plasmid at -20°C. The DNA is stable for at least one year from date of shipping when stored at -20°C.

Note: Plasmids are not sterile. For experiments where strict sterility is required, filtration with 0.22um filter is required.

RefSeq: [NM_005828.5](#)

RefSeq Size: 6394 bp

RefSeq ORF: 1029 bp

Locus ID: 10238

UniProt ID: [P61962](#)

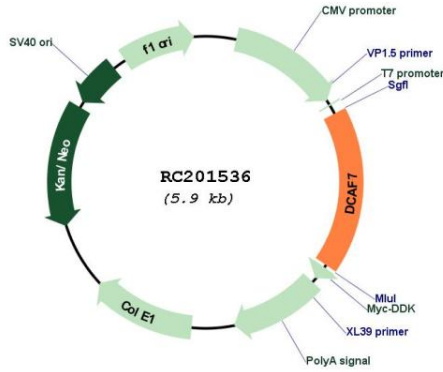
Cytogenetics: 17q23.3

Domains: WD40

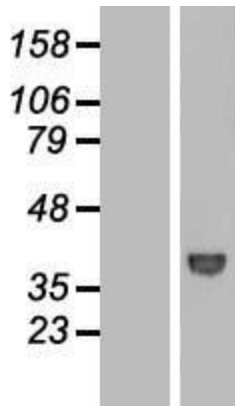
MW: 38.9 kDa

Gene Summary: This gene encodes a protein with multiple WD40 repeats which facilitate protein-protein interactions and thereby enable the assembly of multiprotein complexes. This protein has been shown to function as a scaffold protein for protein complexes involved in kinase signaling. This highly conserved gene is present in eukaryotic plants, fungi, and animals. The ortholog of this gene was first identified in plants as a key regulator of anthocyanin biosynthesis and flower pigmentation. Alternative splicing results in multiple transcript variants. [provided by RefSeq, Feb 2014]

Product images:



Circular map for RC201536



Western blot validation of overexpression lysate (Cat# [LY417042]) using anti-DDK antibody (Cat# [TA50011-100]). Left: Cell lysates from untransfected HEK293T cells; Right: Cell lysates from HEK293T cells transfected with RC201536 using transfection reagent MegaTran 2.0 (Cat# [TT210002]).