

Product datasheet for **RC201534**

TRMT6 (NM_015939) Human Tagged ORF Clone

Product data:

Product Type:	Expression Plasmids
Product Name:	TRMT6 (NM_015939) Human Tagged ORF Clone
Tag:	Myc-DDK
Symbol:	TRMT6
Synonyms:	CGI-09; GCD10; Gcd10p
Mammalian Cell Selection:	Neomycin
Vector:	pCMV6-Entry (PS100001)
E. coli Selection:	Kanamycin (25 ug/mL)



[View online »](#)

ORF Nucleotide Sequence:

>RC201534 ORF sequence
 Red=Cloning site Blue=ORF Green=Tags(s)

TTTTGTAATACGACTCACTATAGGGCGGCCGGGAATTCGTCGACTGGATCCGGTACCGAGGAGATCTGCC
 GCC**CGGATCGCC**

ATGGAGGGCTCAGGGGAGCAGCCGGGCCACAACCACAGCATCCCGGAGACCACCGCATCCGCGACGGCG
 ACTTCGTGGTGTGAAAGGTGAAGATGTGTTAAAGCAGTACAAGTCCAGCGGAGAAAAAGTAACTTT
 CGAAAAACAGTGGTTCTACCTGGATAACGTCATTGGCCATAGTTATGGAAGTGCATTTGAAGTGACCAGT
 GGAGGAAGTCTACAGCCCAAGAAGAAGAGGGAAGAGCCTACTGCAGAGACTAAAGAAGCGGGCAGTGATA
 ATCGAAATATAGTTGATGATGGGAAATCTCAGAACTTACTCAAGATGACATAAAAGCTTTGAAGGACAA
 GGGCATTAAAGGAGAGGAAATAGTTCAGCAGTTAATTGAAAATAGTACAACATCCGAGACAAGACAGAA
 TTTGCCCAAGATAAATATATTAAGAAAGAAAAAATATGAAGCCATCATTACTGTTGTGAAGCCAT
 CCACCCGATTCTTTCAATTATGTATTATGCAAGAGAACCTGGAAAAATTAACCACATGAGATACGATAC
 ACTAGCCAGATGTTGACGTTGGGAAATATCCGTGCTGGCAACAAAATGATTGTGATGGAACGTTGTGCA
 GGCTTGGTGTGGGTGCAATGATGGAACGAATGGGAGTTTTGGCTCCATTATTCAGCTATACCCGGAG
 GAGGACCTGTTCCGGCAGCAACAGCATGTTTTGGATTTCCCAAATCTTTTCTCAGTGGTCTTTATGAATT
 CCCTCTCAACAAAGTGGACAGTCTTCTACATGGAACATTTCTGCCAAGATGTTATCTTCAGAGCCAAAA
 GACAGTGTCTTGGTTGAAGAAAGTAATGGCACACTGGAGGAAAAACAGGCTTCTGAACAAGAGAATGAAG
 ACAGCATGGCAGAGGCCCCAGAGAGCAACCACCAGAAGACCAGGAAACAATGGAACAATTTCTCAAGA
 TCCAGAACATAAGGGGCCCTAAGAGAGAGGAAGCAAAAAAGATTATTCAGGAAAAACAGAGGAGACAA
 GAAGAGCAGAGGAAAAGACATTTAGAGGCTGCCGCTCTGCTGAGTGAAGAAACGCAGATGGTTAATTG
 TAGCTAGTCGTTCCACCCCACTCCCCTGCTGTCTTTGCTGGACTTTGTGGCCCTTCAAGGCCGTT
 TGTGGTCTACTGTACAGTACAAAGAGCCTCTGTTGGAATGCTACACAAAACGCGGGAGAGGGGAGGGGTC
 ATCAACCTCAGGCTGTCTGAAACCTGGCTCAGAAATTATCAGTTTTGCCAGATCGAAGTCATCCTAAAC
 TGCTGATGAGTGGAGGTGGGGTTATCTTCTCTCCGGCTTACCCTTGGCATGGACAACCTTAAAGCAGA
 CACCAGCCTCAAATCTAATGCAAGCACTTTAGAATCACACGAGACTGAGGAGCCTGCAGCTAAAAACGA
 AAATGCCAGAGTCTGACTCT

**ACGGTACGGCGCCGCTCGAGCAGAACTCATCTCAGAAGAGGATCTGGCAGCAAATGATATCCTGGATT
 ACAAGGATGACGACGATAAGGTTTAA**

Protein Sequence:

>RC201534 protein sequence
 Red=Cloning site Green=Tags(s)

MEGSSEQPGPQPQHPGDHRIRDGDFVVLKREDVFKAVQVQRKKVTFEKQWFYLDNVIGHSYGTA FEVTS
 GGSLQPKKKREEPTAETKEAGTDNRNI VDDGKSQKL TQDDIKALKDKGIKGEIIVQQLIENSTTFRDKTE
 FAQDKYIKKKKKYEAIIITVVKPSTRILSIMYYAREPGKINHMYDTLAQMLTLGNIRAGNKMIVMETCA
 GLVVGAMMERMGFGSIIQLYPGGPVRAATACFGFPKSFSLGLEYFPLNKVDSLLHGTFSAKMLSSEPK
 DSALVEESNGTLEEKQASEQENEDSMAEAPESNHPEDQETMETISQDPEHKGPKERGSKKDYIQEKQRRQ
 EEQRKRHLEAAALLSERNADGLIVASRFHPTPLLLSLLDFVAPSRPFVYCYQYKEPLLECYTKLRERGGV
 INLRLSETWLRNYQVLPDRSHPKLLMSGGGYLLSGFTVAMDNLKADTSLKSNASTLESHEETEEPAKKR
 KCPESDS

TRTRPLEQKLISEEDLAANDILDYKDDDDKV

Chromatograms:

https://cdn.origene.com/chromatograms/mk6682_f10.zip

Restriction Sites:

Sgfl-Mlul

Cloning Scheme:


ACCN: NM_015939

ORF Size: 1491 bp

OTI Disclaimer: The molecular sequence of this clone aligns with the gene accession number as a point of reference only. However, individual transcript sequences of the same gene can differ through naturally occurring variations (e.g. polymorphisms), each with its own valid existence. This clone is substantially in agreement with the reference, but a complete review of all prevailing variants is recommended prior to use. [More info](#)

OTI Annotation: This clone was engineered to express the complete ORF with an expression tag. Expression varies depending on the nature of the gene.

Components: The ORF clone is ion-exchange column purified and shipped in a 2D barcoded Matrix tube containing 10ug of transfection-ready, dried plasmid DNA (reconstitute with 100 ul of water).

- Reconstitution Method:**
1. Centrifuge at 5,000xg for 5min.
 2. Carefully open the tube and add 100ul of sterile water to dissolve the DNA.
 3. Close the tube and incubate for 10 minutes at room temperature.
 4. Briefly vortex the tube and then do a quick spin (less than 5000xg) to concentrate the liquid at the bottom.
 5. Store the suspended plasmid at -20°C. The DNA is stable for at least one year from date of shipping when stored at -20°C.

Note: Plasmids are not sterile. For experiments where strict sterility is required, filtration with 0.22um filter is required.

RefSeq: [NM_015939.5](#)

RefSeq Size: 2353 bp

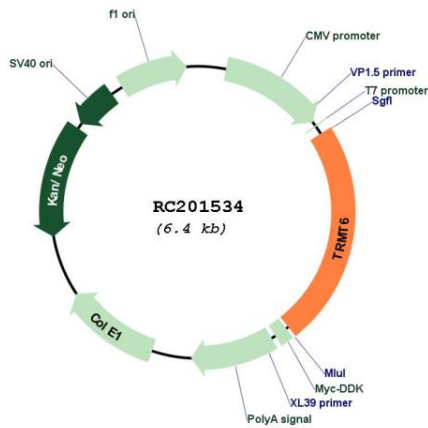
RefSeq ORF: 1494 bp

Locus ID: 51605

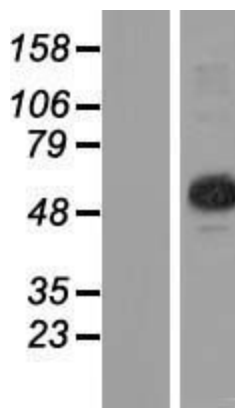
UniProt ID: [Q9UJA5](#)
Cytogenetics: 20p12.3
MW: 55.8 kDa

Gene Summary: This gene encodes a member of the tRNA methyltransferase 6 protein family. A similar protein in yeast is part of a two component methyltransferase, which is involved in the posttranslational modification that produces the modified nucleoside 1-methyladenosine in tRNAs. Modified 1-methyladenosine influences initiator methionine stability and may be involved in the replication of human immunodeficiency virus type 1. Alternative splicing results in multiple transcript variants. [provided by RefSeq, Jul 2013]

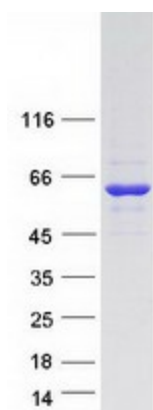
Product images:



Circular map for RC201534



Western blot validation of overexpression lysate (Cat# [LY414294]) using anti-DDK antibody (Cat# [TA50011-100]). Left: Cell lysates from untransfected HEK293T cells; Right: Cell lysates from HEK293T cells transfected with RC201534 using transfection reagent MegaTran 2.0 (Cat# [TT210002]).



Coomassie blue staining of purified TRMT6 protein (Cat# [TP301534]). The protein was produced from HEK293T cells transfected with TRMT6 cDNA clone (Cat# RC201534) using MegaTran 2.0 (Cat# [TT210002]).