

## Product datasheet for RC201533

### S100P (NM\_005980) Human Tagged ORF Clone

#### Product data:

Product Type: Expression Plasmids

Tag: Myc-DDK

Symbol: S100P

Synonyms: MIG9

Mammalian Cell Selection: Neomycin

Vector: pCMV6-Entry (PS100001)

E. coli Selection: Kanamycin (25 ug/mL)

ORF Nucleotide Sequence: >RC201533 ORF sequence  
 Red=Cloning site Blue=ORF Green=Tags(s)

TTTTGTAATACGACTCACTATAGGGCGGCCGGAATTCGTCGACTGGATCCGGTACCGAGGAGATCTGCC  
 GCC**CGATCGC**

ATGACGGAAC TAGAGACAGCCATGGGCATGATCATAGACGTCTTTTCCCGATATTCGGGCAGCGAGGGCA  
 GCACGCAGACCCTGACCAAGGGGAGCTCAAGGTGCTGATGGAGAAGGAGCTACCAGGCTTCCTGCAGAG  
 TGGAAAAGACAAGGATGCCGTGGATAAATTGCTCAAGGACCTGGACGCCAATGGAGATGCCCAGGTGGAC  
 TTCAGTGAGTTCATCGTGTTCGTGGCTGCAATCACGTCTGCCTGTCACAAGTACTTTGAGAAGGCAGGAC  
 TCAA

**ACGCGT**ACGCGGCCGCTCGAGCAGAACTCATCTCAGAAGAGGATCTGGCAGCAAATGATATCCTGGATT  
 ACAAGGATGACGACGATAAGGTTTAA

Protein Sequence: >RC201533 protein sequence  
 Red=Cloning site Green=Tags(s)

MTELETAMGMIIDVFSRYSGSEGSTQTLTKGELKVLMEKELPGFLQSGKDKDAVDKLLKDL DANGDAQVD  
 FSEFIVFVAITSACHKYFEKAGLK

**TR**TRPLE**QKLISEEDLA**NDILDYKDDDDKV

Chromatograms: [https://cdn.origene.com/chromatograms/mk6014\\_c09.zip](https://cdn.origene.com/chromatograms/mk6014_c09.zip)

Restriction Sites: SgfI-MluI



[View online »](#)

**Cloning Scheme:**


**ACCN:** NM\_005980

**ORF Size:** 285 bp

**OTI Disclaimer:** The molecular sequence of this clone aligns with the gene accession number as a point of reference only. However, individual transcript sequences of the same gene can differ through naturally occurring variations (e.g. polymorphisms), each with its own valid existence. This clone is substantially in agreement with the reference, but a complete review of all prevailing variants is recommended prior to use. [More info](#)

**OTI Annotation:** This clone was engineered to express the complete ORF with an expression tag. Expression varies depending on the nature of the gene.

**Components:** The ORF clone is ion-exchange column purified and shipped in a 2D barcoded Matrix tube containing 10ug of transfection-ready, dried plasmid DNA (reconstitute with 100 ul of water).

**Reconstitution Method:**

1. Centrifuge at 5,000xg for 5min.
2. Carefully open the tube and add 100ul of sterile water to dissolve the DNA.
3. Close the tube and incubate for 10 minutes at room temperature.
4. Briefly vortex the tube and then do a quick spin (less than 5000xg) to concentrate the liquid at the bottom.
5. Store the suspended plasmid at -20°C. The DNA is stable for at least one year from date of shipping when stored at -20°C.

**Note:** Plasmids are not sterile. For experiments where strict sterility is required, filtration with 0.22um filter is required.

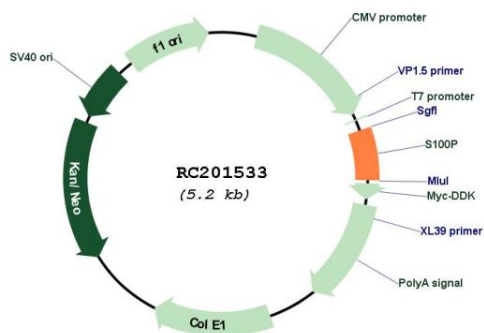
**RefSeq:** [NM\\_005980.2](#), [NP\\_005971.1](#)

**RefSeq Size:** 510 bp

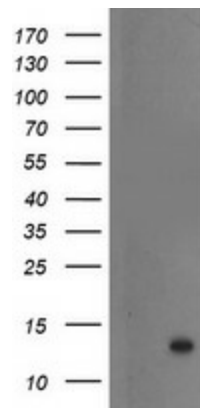
RefSeq ORF: 288 bp  
 Locus ID: 6286  
 UniProt ID: [P25815](#)  
 Cytogenetics: 4p16.1  
 Domains: S\_100, EFh  
 MW: 10.4 kDa

**Gene Summary:** The protein encoded by this gene is a member of the S100 family of proteins containing 2 EF-hand calcium-binding motifs. S100 proteins are localized in the cytoplasm and/or nucleus of a wide range of cells, and involved in the regulation of a number of cellular processes such as cell cycle progression and differentiation. S100 genes include at least 13 members which are located as a cluster on chromosome 1q21; however, this gene is located at 4p16. This protein, in addition to binding Ca<sup>2+</sup>, also binds Zn<sup>2+</sup> and Mg<sup>2+</sup>. This protein may play a role in the etiology of prostate cancer. [provided by RefSeq, Jul 2008]

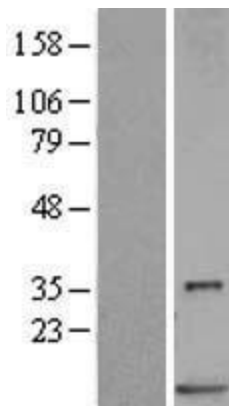
## Product images:



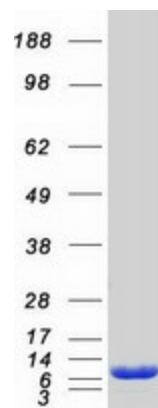
Circular map for RC201533



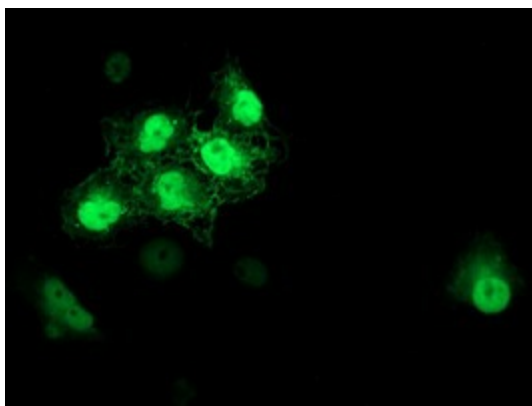
HEK293T cells were transfected with the pCMV6-ENTRY control (Cat# [PS100001], Left lane) or pCMV6-ENTRY S100P (Cat# RC201533, Right lane) cDNA for 48 hrs and lysed. Equivalent amounts of cell lysates (5 ug per lane) were separated by SDS-PAGE and immunoblotted with anti-S100P (Cat# [TA504478]). Positive lysates [LY401809] (100ug) and [LC401809] (20ug) can be purchased separately from OriGene.



Western blot validation of overexpression lysate (Cat# [LY401809]) using anti-DDK antibody (Cat# [TA50011-100]). Left: Cell lysates from untransfected HEK293T cells; Right: Cell lysates from HEK293T cells transfected with RC201533 using transfection reagent MegaTran 2.0 (Cat# [TT210002]).



Coomassie blue staining of purified S100P protein (Cat# [TP301533]). The protein was produced from HEK293T cells transfected with S100P cDNA clone (Cat# RC201533) using MegaTran 2.0 (Cat# [TT210002]).



Anti-S100P mouse monoclonal antibody ([TA504478]) immunofluorescent staining of COS7 cells transiently transfected by pCMV6-ENTRY S100P (RC201533).