

Product datasheet for **RC201531**

FAM50B (NM_012135) Human Tagged ORF Clone

Product data:

Product Type:	Expression Plasmids
Tag:	Myc-DDK
Symbol:	FAM50B
Synonyms:	D6S2654E; X5L
Mammalian Cell Selection:	Neomycin
Vector:	pCMV6-Entry (PS100001)
E. coli Selection:	Kanamycin (25 ug/mL)
ORF Nucleotide Sequence:	>RC201531 ORF sequence Red=Cloning site Blue=ORF Green=Tags(s)

TTTTGTAATACGACTCACTATAGGGCGGCCGGAATTCGTCGACTGGATCCGGTACCGAGGAGATCTGCC
GCC**CGATCGCC**

ATGGCGCAGTACAAGGGCACCATGCGCGAGGCAGGCCGTGCCATGCACCTCCTCAAGAAGCGCGAAAGGC
AGCGGGAGCAGATGGAGGTGCTGAAGCAGCGCATCGCCGAGGAGACCATCCTCAAGTCGAGGTGGACAA
GAGTTCTCGGCGCATTACGACGCCGTGGAGGCCGAGCTGAAGTCCAGCACGGTGGGCTGGTGACCCCTG
AACGACATGAAGGCCCGCAGGAGGCCCTGGTCAGGGAGCGCGAGCGGCAGCTGGCCAAGCGCCAGCACC
TGGAGGAGCAGCGGCTGCAGCAGGAGCGGCAGGGAGCAGGAGCAGCGCGCAGCGCAAGCGTAAGAT
CTCCTGCCTGTCTTTGCACTAGACGACCTCGATGACCAGGCCGACGCGGCCGAGGCCAGGCGCGCCGGA
AACCTGGGCAAGAACCCGACGTGGACACCAGCTTCTGCCAGACCGCGACCGCGAGGAGGAGGAGAACC
GGCTCCGAGAGGAGCTGCGCCAAGAGTGGGAGGCGCAGCGCGAGAAAGTGAAGGACGAGGAGATGGAGGT
CACCTTCAGCTACTGGGACGGCTCGGGCCACCGGCGCACGGTGCGGGTGCGCAAGGGCAACACGGTGCAG
CAGTTCTGAAGAAGGCGCTGCAGGGGCTGCGCAAGGACTTCTGGAGCTGCGCTCCGCCGGCGTGGAGC
AGCTCATGTTTCATCAAGGAGGACCTCATCTGCCGCACTACCACACCTTCTACGACTTCATCATCGCCAG
GGCGAGGGGCAAGAGCGGGCCGCTCTTCAGCTTCGATGTGCACGATGACGTGCGCCTGCTCAGCGACGCC
ACCATGGAGAAGGACGAGTCGCACGCGGCAAGGTGGTGTGCGCAGCTGGTACGAGAAGAACAAGCACA
TCTCCCCCGCAGCCGCTGGGAGGCCTATGACCCCGAGAAGAAGTGGGACAAGTACACCATCCGC

ACGCGTACGCGGCCGCTCGAGCAGAACTCATCTCAGAAGAGGATCTGGCAGCAATGATATCCTGGATT
ACAAGGATGACGACGATAAGGTTTAA



[View online »](#)

Protein Sequence: >RC201531 protein sequence
 Red=Cloning site Green=Tags(s)

MAQYKGTMRGRAMHLLKKRERQREQMEVLKQRIAEETILKSQVDKRFSAHYDAVEAEKSSSTVGLVTL
 NDMKARQEALVRERERQLAKRQHLEEQRLQERQREQRRERKRKISCLSFALDDLDDQADAAEARRAG
 NLGKNPDVDTSLPDRDREEEENRLREELRQEWAEQREKVKDEEMVTFSYWDGSGHRRTVRVRKGNTVQ
 QFLKKALQGLRKDFLELRSAGVEQLMF IKEDLILPHYHTFYDFIARARGKSGPLFSFDVHDDVRLLSDA
 TMEKDESHAGKVVLRSWYEKNKHIFPASRWEAYDPEKKWDKYTIR

TRTRPLEQKLISEEDLAANDILDYKDDDDKV

Chromatograms: https://cdn.origene.com/chromatograms/mk6300_h07.zip

Restriction Sites: SgfI-MluI

Cloning Scheme:



ACCN: NM_012135

ORF Size: 975 bp

OTI Disclaimer: The molecular sequence of this clone aligns with the gene accession number as a point of reference only. However, individual transcript sequences of the same gene can differ through naturally occurring variations (e.g. polymorphisms), each with its own valid existence. This clone is substantially in agreement with the reference, but a complete review of all prevailing variants is recommended prior to use. [More info](#)

OTI Annotation: This clone was engineered to express the complete ORF with an expression tag. Expression varies depending on the nature of the gene.

Components: The ORF clone is ion-exchange column purified and shipped in a 2D barcoded Matrix tube containing 10ug of transfection-ready, dried plasmid DNA (reconstitute with 100 ul of water).

Reconstitution Method:

1. Centrifuge at 5,000xg for 5min.
2. Carefully open the tube and add 100ul of sterile water to dissolve the DNA.
3. Close the tube and incubate for 10 minutes at room temperature.
4. Briefly vortex the tube and then do a quick spin (less than 5000xg) to concentrate the liquid at the bottom.
5. Store the suspended plasmid at -20°C. The DNA is stable for at least one year from date of shipping when stored at -20°C.

Note: Plasmids are not sterile. For experiments where strict sterility is required, filtration with 0.22um filter is required.

RefSeq: [NM_012135.3](#)

RefSeq Size: 1618 bp

RefSeq ORF: 978 bp

Locus ID: 26240

UniProt ID: [Q9Y247](#)

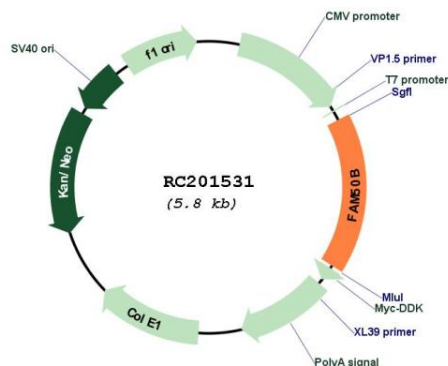
Cytogenetics: 6p25.2

Domains: XAP5

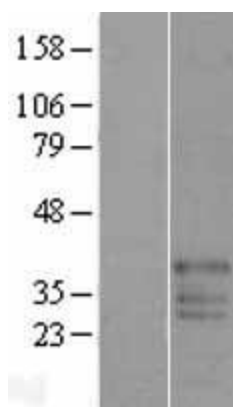
MW: 38.7 kDa

Gene Summary: This gene contains an intronless ORF that arose from ancestral retroposition. The encoded protein is related to a plant protein that plays a role in the circadian clock. This gene is adjacent to a differentially methylated region (DMR) and is imprinted and paternally expressed in many tissues. [provided by RefSeq, Nov 2015]

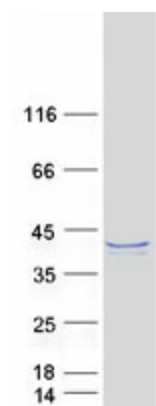
Product images:



Circular map for RC201531



Western blot validation of overexpression lysate (Cat# [LY415961]) using anti-DDK antibody (Cat# [TA50011-100]). Left: Cell lysates from untransfected HEK293T cells; Right: Cell lysates from HEK293T cells transfected with RC201531 using transfection reagent MegaTran 2.0 (Cat# [TT210002]).



Coomassie blue staining of purified FAM50B protein (Cat# [TP301531]). The protein was produced from HEK293T cells transfected with FAM50B cDNA clone (Cat# RC201531) using MegaTran 2.0 (Cat# [TT210002]).