

Product datasheet for RC201528

TCEAL1 (NM_001006639) Human Tagged ORF Clone

Product data:

Product Type: Expression Plasmids
Product Name: TCEAL1 (NM_001006639) Human Tagged ORF Clone
Tag: Myc-DDK
Symbol: TCEAL1
Synonyms: p21; pp21; SIIR; WEX9
Mammalian Cell Selection: Neomycin
Vector: pCMV6-Entry (PS100001)
E. coli Selection: Kanamycin (25 ug/mL)
ORF Nucleotide Sequence: >RC201528 ORF sequence
 Red=Cloning site Blue=ORF Green=Tags(s)

TTTTGTAATACGACTCACTATAGGGCGGCCGGAATTCGTCGACTGGATCCGGTACCGAGGAGATCTGCC
GCC**CGATCGCC**

ATGGACAAACCACGCAAAGAAAAATGAAGAAGAGCCGAGAGCGCGCCCAAGACCGATGAGGAGAGGCCTC
CGGTGGAGCACTCTCCGAAAAGCAGTCCCCGAGGAGCAGTCTTCGGAGGAGCAGTCTCGGAGGAGGA
GTTCTTTCTGAGGAGCTTTGCCTGAGCTCTGCCTGAGATGCTCTCGGAGGAGCGCCCTCCGCAG
GAGGGTCTTTCCAGGAAGGACCTGTTTGGGGCGCCCTCCCATGGAGCAGCCTCCTTGTGGAGTAGGAA
AACATAAGCTTGAAGAAGGAAGCTTTAAAGAAAGTTGGCTCGTTCTCGCCGCAATTTAGAGGGGACAT
ACATGGCAGAAATTAAGCAATGAGGAGATGATACAGGCAGCAGATGAGCTAGAAGAGATGAAAAGAGTA
AGAAACAAACTGATGATAATGCACTGGAAGGCAAACGGAGCCGCTTATCCTATT

ACGCGTACGCGGCCGCTCGAGCAGAACTCATCTCAGAAGAGGATCTGGCAGCAAATGATATCCTGGATT
ACAAGGATGACGACGATAAGGTTTAA

Protein Sequence: >RC201528 protein sequence
 Red=Cloning site Green=Tags(s)

MDKPRKENEPEEQSAPKTDEERPPVEHSPEKQSPEEQSSEEQSSEEEFFPEELLPELLPEMLLSEERPPQ
EGLSRKDLFEGRPPMEQPPCGVGVKHKLEEGSFKERLARSRPQFRGDIHGRNLSNEEMIQAADLEEMKRV
RNKLMIMHWKAKRSRPYPI

TRTRPLEQKLISEEDLAANDILDYKDDDDKV

Chromatograms: https://cdn.origene.com/chromatograms/mk6300_d01.zip



[View online >](#)

Restriction Sites: SgfI-MluI

Cloning Scheme:



ACCN: NM_001006639

ORF Size: 477 bp

OTI Disclaimer: The molecular sequence of this clone aligns with the gene accession number as a point of reference only. However, individual transcript sequences of the same gene can differ through naturally occurring variations (e.g. polymorphisms), each with its own valid existence. This clone is substantially in agreement with the reference, but a complete review of all prevailing variants is recommended prior to use. [More info](#)

OTI Annotation: This clone was engineered to express the complete ORF with an expression tag. Expression varies depending on the nature of the gene.

Components: The ORF clone is ion-exchange column purified and shipped in a 2D barcoded Matrix tube containing 10ug of transfection-ready, dried plasmid DNA (reconstitute with 100 ul of water).

Reconstitution Method:

1. Centrifuge at 5,000xg for 5min.
2. Carefully open the tube and add 100ul of sterile water to dissolve the DNA.
3. Close the tube and incubate for 10 minutes at room temperature.
4. Briefly vortex the tube and then do a quick spin (less than 5000xg) to concentrate the liquid at the bottom.
5. Store the suspended plasmid at -20°C. The DNA is stable for at least one year from date of shipping when stored at -20°C.

RefSeq: [NM_001006639.2](#)

RefSeq Size: 1208 bp

RefSeq ORF: 480 bp

Locus ID: 9338

UniProt ID: [Q15170](#)

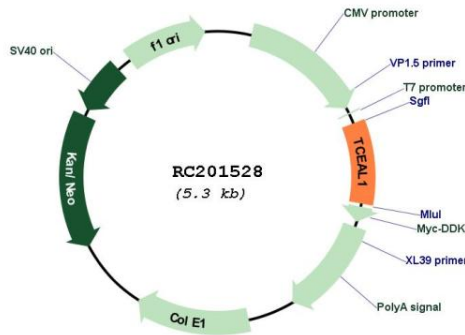
Cytogenetics: Xq22.2

Protein Families: Transcription Factors

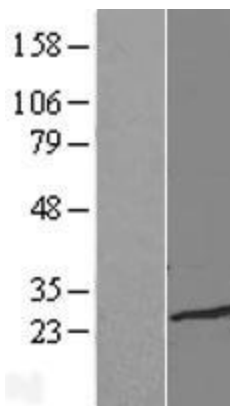
MW: 18.6 kDa

Gene Summary: This gene encodes a member of the transcription elongation factor A (SII)-like (TCEAL) gene family. Members of this family may function as nuclear phosphoproteins that modulate transcription in a promoter context-dependent manner. The encoded protein is similar to transcription elongation factor A/transcription factor SII and contains a zinc finger-like motif as well as a sequence related to the transcription factor SII Pol II-binding region. It may exert its effects via protein-protein interactions with other transcriptional regulators rather than via direct binding of DNA. Multiple family members are located on the X chromosome. Alternative splicing results in multiple transcript variants encoding a single isoform. [provided by RefSeq, Jul 2008]

Product images:



Circular map for RC201528



Western blot validation of overexpression lysate (Cat# [LY417752]) using anti-DDK antibody (Cat# [TA50011-100]). Left: Cell lysates from untransfected HEK293T cells; Right: Cell lysates from HEK293T cells transfected with [RC219873] using transfection reagent MegaTran 2.0 (Cat# [TT210002]).