

Product datasheet for **RC201524**

RALBP1 (NM_006788) Human Tagged ORF Clone

Product data:

Product Type:	Expression Plasmids
Product Name:	RALBP1 (NM_006788) Human Tagged ORF Clone
Tag:	Myc-DDK
Symbol:	RALBP1
Synonyms:	RIP1; RLIP1; RLIP76
Mammalian Cell Selection:	Neomycin
Vector:	pCMV6-Entry (PS100001)
E. coli Selection:	Kanamycin (25 ug/mL)



[View online »](#)

ORF Nucleotide Sequence:

>RC201524 representing NM_006788
 Red=Cloning site Blue=ORF Green=Tags(s)

TTTTGTAATACGACTCACTATAGGGCGGCCGGAATTCGTCGACTGGATCCGGTACCGAGGAGATCTGCC
 GCC**CGCATCGCC**

ATGACTGAGTGCTTCCTGCCCCACCAGCAGCCCAAGTGAACACCCAGGGTGGAGCATGGCAGCGGGC
 TTACCCGACCCCGACTCTGAAGAGATCAGCCCTACTAAGTTTCTGGATTGTACCGCACTGGCGAGCC
 CTCACCTCCCATGACATCCTCCATGAGCCTCCTGATGTAGTGTCTGATGATGAGAAAGATCATGGGAAG
 AAAAAAGGAAATTTAAGAAAAAGAAAAGAGGACTGAAGGCTATGCAGCCTTTCAGGAAGATAGCTCTG
 GAGATGAGGCAGAAAGTCTTCTAAAAAAGAGGTCCAAGGAAATCCATGTTTTCAAGAAGCCAGCTT
 TTCTAAAAAGAAGAAAAGGATTTAAAAAAGAGAAAACCAAGAAGAAAAGCATAAAGAAGAAAAG
 CACAAAGAAGAAAACATAAAGAGAAGAAGTCAAAGACTTGACAGCAGCTGATGTTGTTAAACAGTGGA
 AGGAAAAGAAGAAAAGAAAAGCCAATTCAGGAGCCAGAGGTGCCTCAGATTGATGTTCCAATCTCAA
 ACCCATTTTTGGAATTCCTTTGGCTGATGCAGTAGAGAGGACCATGATGTATGATGGCATTTCGGCTGCCA
 GCCGTTTTCCGTGAATGTATAGATTACGTAGAGAAGTATGGCATGAAGTGTGAAGGCATCTACAGAGTAT
 CAGGAATTAATCAAAGGTGGATGAGCTAAAAGCAGCCTATGACCGGGAGGAGTCTACAAACTTGGGAAG
 CTATGAGCCTAACACTGTAGCCAGTTTGTGTAAGCAGTATTTGCGAGACCTTCCAGAGAATTTGCTTACC
 AAAGAGCTTATGCCAGATTTGAAGAGGCTTGTGGGAGGACCACGGAGACTGAGAAAAGTGCAGGAATTC
 AGCGTTTACTCAAAGAACTGCCAGAATGTAAGTATCTTCTGATTTCTTGGCTCATTGTGCACATGGACCA
 TGTCATTGCAAAGAACTGGAACAAAAATGAATATACAGAACATTTCTATAGTGCTCAGCCCACTGTG
 CAGATCAGCAATCGAGTCTGTATGTGTTTTACACATGTGCAAGAACTCTTTGGAAATGTGGTACTAA
 AGCAAGTGATGAAACCTCTGCGATGGTCTAACATGGCCACGATGCCACGCTGCCAGAGACCCAGCGGG
 CATCAAGGAGGAGATCAGGAGACAGGAGTTTCTTTTGAATTGTTTACATCGAGATCTGCAGGGTGGGATA
 AAGGATTTGTCTAAAGAAGAAAGATTATGGGAAGTACAAAGAATTTTGACAGCCCTCAAAAAGAAAAGTGA
 GAGAAGCTAAAAGACAGGAGTGTGAAACCAAGATTGCACAAGAGATAGCCAGTCTTTCAAAGAGGATGT
 TTCAAAGAAGAGATGAATGAAAATGAAGAAGTTATAAATATTCTCCTTGCTCAGGAGAATGAGATCCTG
 ACTGAACAGGAGGAGCTCCTGGCCATGGAGCAGTTTCTGCGCCGGCAGATTGCCTCAGAAAAAGAAGAGA
 TTGAACGCCTCAGAGCTGAGATTGCTGAAATTCAGAGTCGCCAGCAGCACGGCCGAAGTGAAGTGAAG
 GTACTCCTCCGAGAGCGAGAGCGAGAGTGAGGATGAGGAGGAGCTGCAGATCATTCTGGAAGACTTACAG
 AGACAGAACGAAGAGCTGAAAATAAAGAACAATCATTTGAATCAAGCAATTCATGAGGAGCGCAGGCCA
 TCATCGAGCTGCGCGTGCAGCTGCGGCTGCTCCAGATGCAGCGAGCCAAGGCCGAGCAGCAGGCGCAGGA
 GGACGAGGAGCCTGAGTGGCGGGGGTCCCGTCCAGCCGCCAGAGACGGCGTCTTGAGCCAAAAGCA
 GCTAAAGAGCAGCCAAAGGCAGGCAAGGAGCCGCAAGCCATCGCCAGCAGGGATAGGAAGGAGAGCT
 CCATC

ACGCGTACGCGGGCCGCTCGAGCAGAACTCATCTCAGAAGAGGATCTGGCAGCAATGATATCCTGGATT
 ACAAGGATGACGACGATAAGGTTTAA

Protein Sequence: >RC201524 representing NM_006788
Red=Cloning site Green=Tags(s)

MTECFLPPTSSPSEHRRVEHGSLTRTPSSEEISPTKFPGLYRTGEPSPPHDILHEPPDVVSDEKDHGK
 KKGKFKKKEKRTEGYAAFQEDSSGDEAESPSKMKRSKGIHVFKKPSFSKKKEKDFIKEKPKEEKHKEEK
 HKEEKHKEKSSKDLTAADVVKQWKEKSKKKKPIQEPEVPQIDVNLKPIFGIPLADAVERTMMYDGIPLP
 AVFRECIDYVEKYGMKCEGIYRVSGIKSVDELKAAAYDREESTNLEDYEPNTVASLLKQYLRDLPENLLT
 KELMPRFEEACGRITTEKVFQRLKELPECNVLLISWLVHMDHVIAKELETMNIQNISIVLSPTV
 QISNRVLYVFFTHVQELFGNVVLKQVMKPLRWSNMATMPTLPETQAGIKEEIRRQEFLLNCLHRDLQGGI
 KDLSKEERLWEVQRILTALKRKLREAKRQECETKIAQEIASLSKEDVSKEEMNENEVINILLAQENEIL
 TEQEELLAMEQLRQRQIASEKEEIERLRAEIAEIQSRQQHGRSETEEYSSESESEDEEELQIILEDLQ
 RQNEELEIKNNHLNQAIIHEEERAIIELRVQLRLLQMRQAKAEQQAQEDEEPEWRGAVQPPRDGVLPEKA
 AKEQPKAGKEPAKPSRDRKETS

TRTRPLEQKLISEEDLAANDILDYKDDDDKV

Chromatograms: https://cdn.origene.com/chromatograms/mg2565_b08.zip

Restriction Sites: SgfI-MluI

Cloning Scheme:



ACCN: NM_006788

ORF Size: 1965 bp

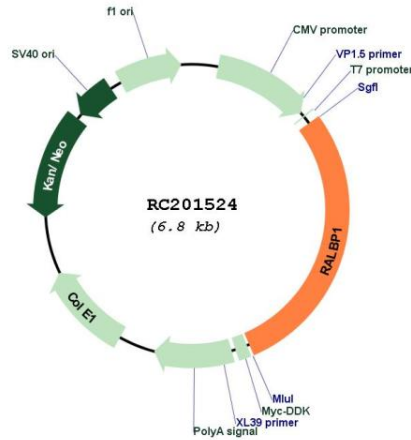
OTI Disclaimer: The molecular sequence of this clone aligns with the gene accession number as a point of reference only. However, individual transcript sequences of the same gene can differ through naturally occurring variations (e.g. polymorphisms), each with its own valid existence. This clone is substantially in agreement with the reference, but a complete review of all prevailing variants is recommended prior to use. [More info](#)

OTI Annotation: This clone was engineered to express the complete ORF with an expression tag. Expression varies depending on the nature of the gene.

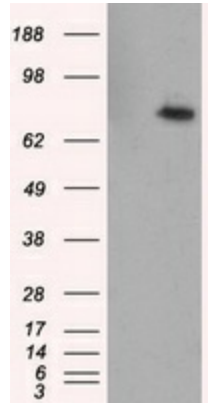
Components: The ORF clone is ion-exchange column purified and shipped in a 2D barcoded Matrix tube containing 10ug of transfection-ready, dried plasmid DNA (reconstitute with 100 ul of water).

Reconstitution Method:	<ol style="list-style-type: none">1. Centrifuge at 5,000xg for 5min.2. Carefully open the tube and add 100ul of sterile water to dissolve the DNA.3. Close the tube and incubate for 10 minutes at room temperature.4. Briefly vortex the tube and then do a quick spin (less than 5000xg) to concentrate the liquid at the bottom.5. Store the suspended plasmid at -20°C. The DNA is stable for at least one year from date of shipping when stored at -20°C.
Note:	Plasmids are not sterile. For experiments where strict sterility is required, filtration with 0.22um filter is required.
RefSeq:	NM_006788.4
RefSeq Size:	4368 bp
RefSeq ORF:	1968 bp
Locus ID:	10928
UniProt ID:	Q15311
Cytogenetics:	18p11.22
Domains:	RhoGAP
Protein Pathways:	Pancreatic cancer, Pathways in cancer
MW:	75.9 kDa
Gene Summary:	RALBP1 plays a role in receptor-mediated endocytosis and is a downstream effector of the small GTP-binding protein RAL (see RALA; MIM 179550). Small G proteins, such as RAL, have GDP-bound inactive and GTP-bound active forms, which shift from the inactive to the active state through the action of RALGDS (MIM 601619), which in turn is activated by RAS (see HRAS; MIM 190020) (summary by Feig, 2003 [PubMed 12888294]).[supplied by OMIM, Nov 2010]

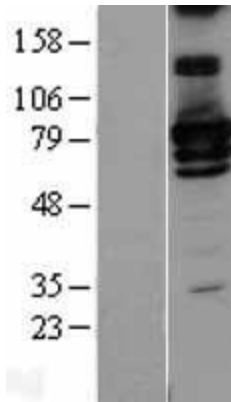
Product images:



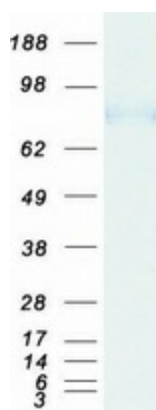
Circular map for RC201524



HEK293T cells were transfected with the pCMV6-ENTRY control (Cat# [PS100001], Left lane) or pCMV6-ENTRY RALBP1 (Cat# RC201524, Right lane) cDNA for 48 hrs and lysed. Equivalent amounts of cell lysates (5 ug per lane) were separated by SDS-PAGE and immunoblotted with anti-RALBP1 (Cat# [TA500964]). Positive lysates [LY402031] (100ug) and [LC402031] (20ug) can be purchased separately from OriGene.



Western blot validation of overexpression lysate (Cat# [LY402031]) using anti-DDK antibody (Cat# [TA50011-100]). Left: Cell lysates from untransfected HEK293T cells; Right: Cell lysates from HEK293T cells transfected with RC201524 using transfection reagent MegaTran 2.0 (Cat# [TT210002]).



Coomassie blue staining of purified RALBP1 protein (Cat# [TP301524]). The protein was produced from HEK293T cells transfected with RALBP1 cDNA clone (Cat# RC201524) using MegaTran 2.0 (Cat# [TT210002]).