

Product datasheet for **RC201521**

GLMN (NM_053274) Human Tagged ORF Clone

Product data:

Product Type:	Expression Plasmids
Product Name:	GLMN (NM_053274) Human Tagged ORF Clone
Tag:	Myc-DDK
Symbol:	GLMN
Synonyms:	FAP; FAP48; FAP68; FKBPAP; GLML; GVM; VMGLOM
Mammalian Cell Selection:	Neomycin
Vector:	pCMV6-Entry (PS100001)
E. coli Selection:	Kanamycin (25 ug/mL)



[View online »](#)

ORF Nucleotide Sequence:

>RC201521 ORF sequence
 Red=Cloning site Blue=ORF Green=Tags(s)

TTTTGTAATACGACTCACTATAGGGCGGCCGGGAATTCGTCGACTGGATCCGGTACCGAGGAGATCTGCC
 GCCCGGATCGCC

ATGGCTGTAGAGGAACCTCAGTCTATAATAAAGAGATGTCAAATCTAGAAGAGCAAGACTTTAAAGAAG
 AGGATTTTGGCCTATTTCAAGTTAGCTGGCAAAGATGCATAGAAGAAGGGCACACAGACCAGCTATTAGA
 AATTATCAAAAATGAAAAGAATAAGGTCATCATCAAGAATATGGGCTGGAATCTCGTTGGTCTGTGT
 CGATGCCTTTTGTGTAAGATAAAGAGGATAGTAAAAGAAAAGTTATTTTTTGATCTTTGATTTATTGG
 TAAAGTTATGCAATCAAAGGAATTATTGTTGGGTTTGGCTTGAAGTATTGAAGAGCCCTCTGGAAAACA
 GATATCCCAAAGTATTCTTTTGGCTTACGCCATTACAAACAGTGATTCAGAAACTTCATAACAAGGCA
 TATTCAATTGGATTAGCATTGTCTACCCCTTGAATCAGCTATCTCTTCTCCTGTTCCATACTCAAAG
 AACAAATACAAATGGATGACTATGGCCTTTGTCAGTGTGCAAGGCCTTAATAGAGTTCCTAAGCCTTT
 TGTGGAAGAAGTCATTGATAACAAAGAAAACCTACTGGAAAATGAAAAGTTAAAGGATGAATTACTGAAA
 TTTTGTTCAAAAGCTTGAAATGCCTTTGCTGACAGCACAATCTTTGAACAGTCTGAAGAAGGTGGAA
 ATGATCCTTTTCAGGTATTTGCATCAGAAAATAATAGGTTTTTATCAGCAATTGGACACCCTTTCCCAA
 AATGATTTTTAATCATGGAAGGAAAAAGAGAAGCTTGAATTACCTTGAATTTGAAGAAGAAGAAAATAAA
 CAGTTAGCAGACTCAATGGCTTCTCGGCATATCTAGTATTTGTACAGGGCATCCATATTGATCAGCTTC
 CAATGGTCTTAAGCCATTGTACCTTTTGCAGTTAATATGGGGCACATTGAAGTCTTTTTCGAAAGAAC
 AGAAGAGTCTGTTATCTCAAAGGATTGGAGCTGCTGGAGAATAGTTTATTGAGAATAGAAGACAATAGT
 CTACTTTACCAGTACTTAGAAAATCAAGAGTTTTCTTACTGTACCTCAGGGCTTAGTGAAAGTAAATGACAC
 TTTGCCCATTTGAGACACTGAGGAAAAAGAGTTTAGCTATGCTTACAGTGTATATTAACAAGTTGGATT
 ACAAGGCAAAATACATTATTTAGGTGCTTATTGAATACAAGTAATCACTCAGGTGGAGGCTTTTATT
 ATTCAAAATATCAAAAATCAAATGACATGTCATTAAGAGAACACGTAACAACAATGGTTTACAGGAC
 CACAGTTGATTTCCCTTCTGATTTGGTACTTTTTCTCCAGAGGGTGCAGAAACAGATTTACTGCAAAA
 CTCAGATAGGATTATGGCTTCATTAATTTATTGAGGATTTGGTTATCAAAGATAATGAAAATGACAA
 CAACTGGATTATGGACAGAAGTTGAAATATTGAGAATAATTTCTTAAAGCCACTTCATATAGGACTTA
 ATATGTCAAAGCACATTATGAAGCAGAAATAAAAATAGCCAAGAGGCCAGAAATCTAAAGATCTTTG
 TTCTATAACTGTAAGTGGAGAAGAGATCCCTAATATGCCTCCTGAAATGCAGCTTAAAGTCTGCATTCA
 GCTCTTTTACATTTGATTTGATTGAAAGTGTCTAGCTCGAGTGAAGAAGTCAATGAAATAAAAAACA
 AGTCTACCTCTGAAGAAAATATTGGGATAAAG

ACGCGTACGCGGCCGCTCGAGCAGAAACTCATCTCAGAAGAGGATCTGGCAGCAAATGATATCCTGGATT
 ACAAGGATGACGACGATAAGGTTTAA

Protein Sequence:

>RC201521 protein sequence
 Red=Cloning site Green=Tags(s)

MAVEELQSIIKRCQILEEQDFKEEDFGLFQLAGQRCIEEGHTDQLLEIIQNEKNKVIKNGWNLVGPVV
 RCLLCKDKEDSKRKVYFLIFDLLVKLCNPKELLGLLELIEEPSGKQISQSILLLLQPLQTVIQKLHNKA
 YSIGLALSTLWNQLSLLPVPYSKEQIQMDDYGLCQCKALIEFTKPFVEEVIDNKENLENEKLDKDELLK
 FCFKSLKCPLLTAQFFEQSEEGNDPFRYFASEIIGFLSAIGHPPFKMIFNHGRKKRTWNYLEFEENEK
 QLADSMASLAYLVFVQGIHIDQLPMVLSPLYLLQFNMGHIIEVFLQRTEESVISKGLELLENSLLRIEDNS
 LLYQYLEIKSFLTVPQGLVKVMTLCPIETLRKKS LAMLQLYINKLDSQGYTLFRCLLNTSNHSGVEAFI
 IQNIKNQIDMSLKRTRNKNWFTGPQLISLLDLVFLPEGAETDLLQNSDRIMASLNLLRYLVIKDNENDN
 QTGLWTELGNIENNFLKPLHIGLNMSKAHYEAEIKNSQEAQKSKDLCSITVSGEIIPNMPPEMQLKVLHS
 ALFTFDLIESVLRVEELIEIKTKSTSEENIGIK

TRTRPLEQKLISEEDLAANDILDYKDDDDKV

Chromatograms:

https://cdn.origene.com/chromatograms/mk6541_f10.zip

Restriction Sites: SgfI-MluI

Cloning Scheme:



ACCN: NM_053274

ORF Size: 1782 bp

OTI Disclaimer: The molecular sequence of this clone aligns with the gene accession number as a point of reference only. However, individual transcript sequences of the same gene can differ through naturally occurring variations (e.g. polymorphisms), each with its own valid existence. This clone is substantially in agreement with the reference, but a complete review of all prevailing variants is recommended prior to use. [More info](#)

OTI Annotation: This clone was engineered to express the complete ORF with an expression tag. Expression varies depending on the nature of the gene.

Components: The ORF clone is ion-exchange column purified and shipped in a 2D barcoded Matrix tube containing 10ug of transfection-ready, dried plasmid DNA (reconstitute with 100 ul of water).

- Reconstitution Method:
1. Centrifuge at 5,000xg for 5min.
 2. Carefully open the tube and add 100ul of sterile water to dissolve the DNA.
 3. Close the tube and incubate for 10 minutes at room temperature.
 4. Briefly vortex the tube and then do a quick spin (less than 5000xg) to concentrate the liquid at the bottom.
 5. Store the suspended plasmid at -20°C. The DNA is stable for at least one year from date of shipping when stored at -20°C.

RefSeq: [NM_053274.3](#)

RefSeq Size: 2042 bp

RefSeq ORF: 1785 bp

Locus ID: 11146

UniProt ID: [Q92990](#)

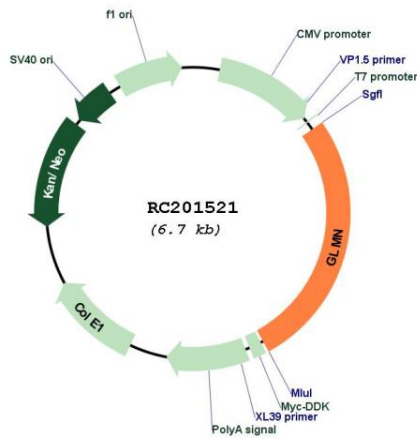
Cytogenetics: 1p22.1

Protein Families: Druggable Genome

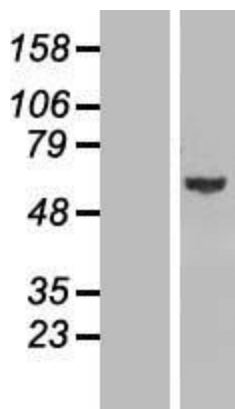
MW: 68.2 kDa

Gene Summary: This gene encodes a phosphorylated protein that is a member of a Skp1-Cullin-F-box-like complex. The protein is essential for normal development of the vasculature and mutations in this gene have been associated with glomuvenous malformations, also called glomangiomas. Multiple splice variants encoding different isoforms have been found for this gene. [provided by RefSeq, Feb 2016]

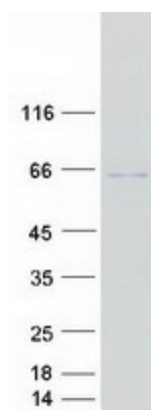
Product images:



Circular map for RC201521



Western blot validation of overexpression lysate (Cat# [LY409315]) using anti-DDK antibody (Cat# [TA50011-100]). Left: Cell lysates from untransfected HEK293T cells; Right: Cell lysates from HEK293T cells transfected with RC201521 using transfection reagent MegaTran 2.0 (Cat# [TT210002]).



Coomassie blue staining of purified GLMN protein (Cat# [TP301521]). The protein was produced from HEK293T cells transfected with GLMN cDNA clone (Cat# RC201521) using MegaTran 2.0 (Cat# [TT210002]).