

Product datasheet for **RC201504**

ODR4 (C1orf27) (NM_017847) Human Tagged ORF Clone

Product data:

Product Type:	Expression Plasmids
Product Name:	ODR4 (C1orf27) (NM_017847) Human Tagged ORF Clone
Tag:	Myc-DDK
Symbol:	ODR4
Synonyms:	C1orf27; odr-4; TTG1
Mammalian Cell Selection:	Neomycin
Vector:	pCMV6-Entry (PS100001)
E. coli Selection:	Kanamycin (25 ug/mL)



[View online »](#)

ORF Nucleotide Sequence:

>RC201504 ORF sequence
 Red=Cloning site Blue=ORF Green=Tags(s)

TTTTGTAATACGACTCACTATAGGGCGGCCGGGAATTCGTCGACTGGATCCGGTACCGAGGAGATCTGCCGCC**CGCATCGCC**

ATGGGAAGAACCTACATTGTAGAAGAGACTGTTGGCCAGTATCTTTCAAACATAAATCTCCAAGGAAAGCCTTTTGTCTCTGGCCTTTTAATAGGACAGTGTTGTCACAAAAGGATTATGTGATTCTTGCCACTAGAAGCCACCCAAAGAGGAGCAAAGTGAGAACCTCAAACATCCCAAAGCTAAGTTGGATAAATTGGATGAAGAA TGGGCCACAGAACATGCCTGCCAGGTATCCAGAATGCTACCAGGGGGACTTTTAGTTCTTGGAGTATTTA TTATTACTACTTTAGAAGTGGCAAATGATTTTCAAATGCCCTGCGTAGACTAATGTTTGTGTGGAAAA GTCTATAAATAGAAAAGAGATTGTGGAATTTACAGAGGAGGAAGTCTCAGAACGAGTGACACTTCACATT TGTGCTTCTACAAAAAATATTTTGTGCAACTTATGATATCCATGATCCAAAGAGTTTCAGCAAGACCAG CAGATTGGAAGTATCAAAGTGGATTATCATCCTCATGGCTTTCTTTAGAGTGTACAGTTCACATTAATAT TCACATCCCACTTCTGCTACTTCTGTGAGCTATACTCTGGAGAAAAATACAAAGATGGACTTACACGC TGGGCCAAGGAAATAGAAAATGGTGTATTTGATTAATGGACAAGTTAAAGATGAAGATTGTGACCTAT TAGAAGGACAGAAAAATCTTCTAGAGGAAATACTCAAGCAACTAGTCATTCTTTTGATGTCAGAGTGCT AACGCAGTTGCTCCTGAATTCAGACCACAGATCCACAGCCACAGTCCAGATATGTAGCGTTCTGTAAAC CTTAAGGGTGTGTGAAATGCAGAGCTTATATCCACAGCAGTAAACCCAAAGTTAAAGATGCTGTGCAGG CAGTAAAGAGGGATATATTGAACACAGTTGCTGATCGTTGTGAAATGCTATTTGAGGATCTGCTTTTGAA TGAATTCAGAAAAAAGATTCTGAAAAGAGTTCCACGTCTCCCTTATCGAGTCTTTGTTCCCTT CCTGGATCCACTGTAATGTTGTGTGATTATAAATTTGACGATGAGTCAGCTGAAGAAATCAGGGACCATT TTATGGAGATGTTGGATCACACAATTCAAATAGAAGATTTGAAAATTCAGAGGAAACAAACACAGCTTG TATGAGTCTTCTATGAATAGTCAAGCTTCATTGGACAACACAGATGATGAACAACCAAAACAACCAATT AAAACTACAATGTTATTGAAAATTCAGCAAAACATAGGTGTGATTGCAGCATTTACAGTTCAGTCTTG CTGCGGGTATCTCCTTTCATTACTTCAGTGAT

ACGCGTACGCGGCCGCTCGAGCAGAACTCATCTCAGAAGAGGATCTGGCAGCAAATGATATCCTGGATTACAAGGATGACGACGATAAGGTTTAA

Protein Sequence:

>RC201504 protein sequence
 Red=Cloning site Green=Tags(s)

MGRTYIVEETVGQYLSNINLQKAFVSGLLIGQCSSQKDYVILATRTPPKEEQSENLKHPKAKLDNLDEE WATEHACQVSRMLPGLLVLGVFIITLLELANDFQNALRRLMFAVEKSINRKLWNFTEEEVSERVTLHI CASTKKIFCRTYDIHDPKSSARPADWKYQSGLSSWLSELECTVHINIHIPLSATSVSYTLEKNTKNGLTR WAKEIENGVYLINGQVKDEDCDLEGGQKSSRGNTQATSHSFDVRVLTQLLLNSDHRSTATVQICSGSVN LKGAVKCRAYIHSKPKVKDAVQAVKRDLNLTVADRCEMLFEDLLLNEIPEKKDSEKFEHVLPHYRVFVPL PGSTVMLCDYKFDDESAAEIRDHFMEMLDHTIQIEDLEIAEETNTACMSSMNSQASLDNTDDEQPKQPI KTTMLLKIQQNIGVIAAFTVAVLAAGISFHYFSD

TRTRPLEQKLISEEDLAANDILDYKDDDDKV

Chromatograms:

https://cdn.origene.com/chromatograms/mk6541_e12.zip

Restriction Sites:

Sgfl-Mlul

Cloning Scheme:


ACCN: NM_017847

ORF Size: 1362 bp

OTI Disclaimer: The molecular sequence of this clone aligns with the gene accession number as a point of reference only. However, individual transcript sequences of the same gene can differ through naturally occurring variations (e.g. polymorphisms), each with its own valid existence. This clone is substantially in agreement with the reference, but a complete review of all prevailing variants is recommended prior to use. [More info](#)

OTI Annotation: This clone was engineered to express the complete ORF with an expression tag. Expression varies depending on the nature of the gene.

Components: The ORF clone is ion-exchange column purified and shipped in a 2D barcoded Matrix tube containing 10ug of transfection-ready, dried plasmid DNA (reconstitute with 100 ul of water).

Reconstitution Method:

1. Centrifuge at 5,000xg for 5min.
2. Carefully open the tube and add 100ul of sterile water to dissolve the DNA.
3. Close the tube and incubate for 10 minutes at room temperature.
4. Briefly vortex the tube and then do a quick spin (less than 5000xg) to concentrate the liquid at the bottom.
5. Store the suspended plasmid at -20°C. The DNA is stable for at least one year from date of shipping when stored at -20°C.

RefSeq: [NM_017847.6](#)

RefSeq Size: 3926 bp

RefSeq ORF: 1365 bp

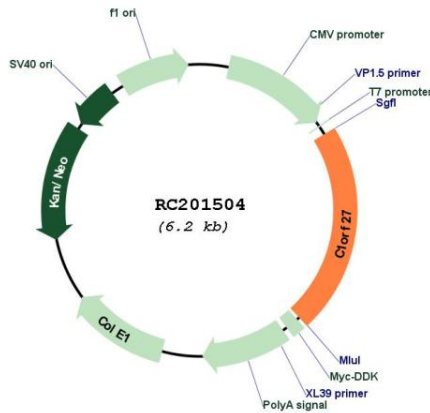
Locus ID: 54953

UniProt ID: [Q5SWX8](#)

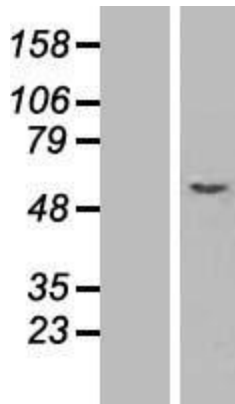
Cytogenetics: 1q31.1

Protein Families: Transmembrane
MW: 51.1 kDa
Gene Summary: May play a role in the trafficking of a subset of G-protein coupled receptors. [UniProtKB/Swiss-Prot Function]

Product images:



Circular map for RC201504



Western blot validation of overexpression lysate (Cat# [LY413459]) using anti-DDK antibody (Cat# [TA50011-100]). Left: Cell lysates from untransfected HEK293T cells; Right: Cell lysates from HEK293T cells transfected with RC201504 using transfection reagent MegaTran 2.0 (Cat# [TT210002]).