

## Product datasheet for RC201502

### TIPIN (NM\_017858) Human Tagged ORF Clone

#### Product data:

Product Type:	Expression Plasmids
Product Name:	TIPIN (NM_017858) Human Tagged ORF Clone
Tag:	Myc-DDK
Symbol:	TIPIN
Mammalian Cell Selection:	Neomycin
Vector:	pCMV6-Entry (PS100001)
E. coli Selection:	Kanamycin (25 ug/mL)
ORF Nucleotide Sequence:	>RC201502 ORF sequence Red=Cloning site Blue=ORF Green=Tags(s)

TTTTGTAATACGACTCACTATAGGGCGGCCGGAATTCGTCGACTGGATCCGGTACCGAGGAGATCTGCC  
GCC**CGATCGCC**

ATGCTAGAACCACAGGAGAATGGCGTGATTGACCTACCAGATTATGAGCATGTAGAAGATGAACTTTTC  
CTCCTTTCCACCTCCAGCCTCTCCAGAGACAAGATGGTGAAGGAAGTGGCTGATGAAGAGTCAGG  
AAATGGAGCACCTGTTCTGTACCTCAAAGAGAACAGTTAAAAGAAATATACCCAAGCTGGATGCTCAG  
AGATTAATTTTCAGAGAGAGGACTTCCAGCCTTAAGGCATGTATTTGATAAGGCAAAATTCAAAGGTAAG  
GTCATGAGGCTGAAGACTTGAAGATGCTAATCAGACACATGGAGCACTGGGCACATAGGCTATTCCTAA  
ACTGCAGTTTGAGGATTTTATTGACAGAGTTGAATACCTGGGAAGTAAAAGGAAGTTTCAGACCTGTTTA  
AAACGAATTCGACTTGATCTCCCTATTTTACATGAAGATTTTGTAGCAATAATGATGAAGTTGCGGAGA  
ATAATGAACATGATGTCACCTTCTACTGAATTAGATCCCTTTCTGACAACTTATCTGAAAGTGAGATGTT  
TGCTTCTGAGTTAAGTAGAAGCCTAACAGAAGAGCAACAACAAGAAATTGAGAGAAATAACAACCTGGCC  
TTGGAAAGAAGGCAGGCAAAGCTGCTGAGTAATAGTCAGACCCTAGGAAATGATATGTTAATGAATACAC  
CCAGGGCACACACGGTTGAAGAGGTTAATACTGATGAGGATCAAAGGAGGAGTCAAATGGATTAACGA  
AGACATTTCTGGACAATCCATGTAATGATGCTATTGCCAATACTTTAAATGAAGAGGAAACACTGCTGGAC  
CAGTCTTTTAAAATGTGCAACAGCAACTTGATGTACATCCAGAAATATTACTGAAGCTAGA

**ACGCGT**ACGCGGCCGCTCGAGCAGAAACTCATCTCAGAAGAGGATCTGGCAGCAAATGATATCCTGGATT  
ACAAGGATGACGACGATAAGGTTTAA



[View online »](#)

**Protein Sequence:** >RC201502 protein sequence  
Red=Cloning site Green=Tags(s)

MLEPQENGVIDLPDYEHVEDETFFPPPPPASPERQDGEGETPDEESGNGAPVVPVPPKRTVKRNIPKLDQAQ  
 RLISERGLPALRHVFDKAKFKGKGHEAEDLKMLIRHMEHWAHRLFPKLQFEDFIDRVEYLGSKKEVQTCL  
 KRIRLDLPILHEDFVSNNDEVAENNEHDVTSTELDPFLTNLSESEMFASELSRSLTEEQQRIERNKQLA  
 LERRQAKLLSNSQTLGNDMLMNTPRAHTVEEVNTDEDQKEESNGLNEDILDNPCNDAIANTLNEEETLLD  
 QSFKNVQQQLDATSRNITEAR

TRTRPLEQKLISEEDLAANDILDYKDDDDKV

**Chromatograms:** [https://cdn.origene.com/chromatograms/mk6192\\_a09.zip](https://cdn.origene.com/chromatograms/mk6192_a09.zip)

**Restriction Sites:** Sgfl-MluI

**Cloning Scheme:**

Cloning sites used for ORF Shuttling:



\* The last codon before the Stop codon of the ORF

**ACCN:** NM\_017858

**ORF Size:** 903 bp

**OTI Disclaimer:** The molecular sequence of this clone aligns with the gene accession number as a point of reference only. However, individual transcript sequences of the same gene can differ through naturally occurring variations (e.g. polymorphisms), each with its own valid existence. This clone is substantially in agreement with the reference, but a complete review of all prevailing variants is recommended prior to use. [More info](#)

**OTI Annotation:** This clone was engineered to express the complete ORF with an expression tag. Expression varies depending on the nature of the gene.

**Components:** The ORF clone is ion-exchange column purified and shipped in a 2D barcoded Matrix tube containing 10ug of transfection-ready, dried plasmid DNA (reconstitute with 100 ul of water).

**Reconstitution Method:**

1. Centrifuge at 5,000xg for 5min.
2. Carefully open the tube and add 100ul of sterile water to dissolve the DNA.
3. Close the tube and incubate for 10 minutes at room temperature.
4. Briefly vortex the tube and then do a quick spin (less than 5000xg) to concentrate the liquid at the bottom.
5. Store the suspended plasmid at -20°C. The DNA is stable for at least one year from date of shipping when stored at -20°C.

**RefSeq:** [NM\\_017858.2](#)

**RefSeq Size:** 1295 bp

**RefSeq ORF:** 906 bp

**Locus ID:** 54962

**UniProt ID:** [Q9BVW5](#)

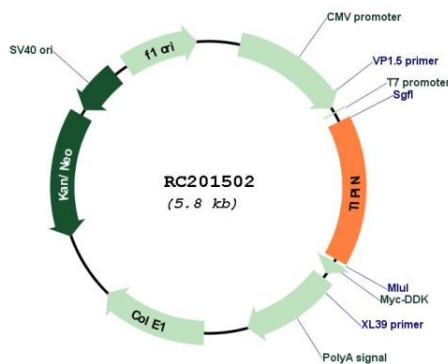
**Cytogenetics:** 15q22.31

**Protein Families:** Druggable Genome

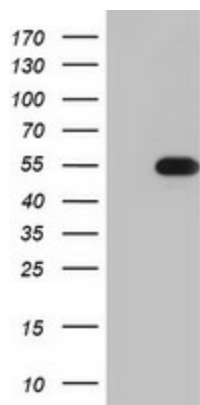
**MW:** 34.5 kDa

**Gene Summary:** The protein encoded by this gene is part of the replisome complex, a group of proteins that support DNA replication. It binds TIM, which is involved in circadian rhythm regulation, and aids in protecting cells against DNA damage and stress. Two pseudogenes and two transcript variants encoding different isoforms have been found for this gene. [provided by RefSeq, Jul 2014]

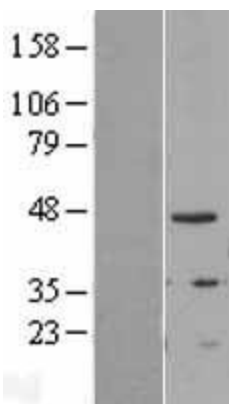
## Product images:



Circular map for RC201502



HEK293T cells were transfected with the pCMV6-ENTRY control (Cat# [PS100001], Left lane) or pCMV6-ENTRY TIPIN (Cat# RC201502, Right lane) cDNA for 48 hrs and lysed. Equivalent amounts of cell lysates (5 ug per lane) were separated by SDS-PAGE and immunoblotted with anti-TIPIN (Cat# [TA802939]). Positive lysates [LY402647] (100ug) and [LC402647] (20ug) can be purchased separately from OriGene.



Western blot validation of overexpression lysate (Cat# [LY402647]) using anti-DDK antibody (Cat# [TA50011-100]). Left: Cell lysates from untransfected HEK293T cells; Right: Cell lysates from HEK293T cells transfected with RC201502 using transfection reagent MegaTran 2.0 (Cat# [TT210002]).