

Product datasheet for RC201501

EAPP (NM_018453) Human Tagged ORF Clone

Product data:

Product Type:	Expression Plasmids
Product Name:	EAPP (NM_018453) Human Tagged ORF Clone
Tag:	Myc-DDK
Symbol:	EAPP
Synonyms:	BM036; C14orf11
Mammalian Cell Selection:	Neomycin
Vector:	pCMV6-Entry (PS100001)
E. coli Selection:	Kanamycin (25 ug/mL)
ORF Nucleotide Sequence:	>RC201501 ORF sequence Red=Cloning site Blue=ORF Green=Tags(s)

TTTTGTAATACGACTCACTATAGGGCGCCGGGAATTCGTCGACTGGATCCGGTACCGAGGAGATCTGCC
GCC**CGATCGCC**

ATGAACCGGCTTCCGGATGACTACGACCCCTACGCGTTGAAGAGCCTAGCGACGAGGAGCCGGCTTTGA
GCAGCTCTGAGGATGAAGTGGATGTGCTTTTACATGGAACCTCTGACCAAAAACGAAAACATCAGAGA
ATGTCTTACCGGAGAAAGTGAATCATCTAGTGAAGATGAATTTGAAAAGGAGATGGAAGCTGAATTAAT
TCTACCATGAAAACAATGGAGGACAAGTTATCCTCTCTGGGAACGGATCTTCTCAGGAAATGGAAAAG
TTGCAACAGCTCCGACAAGTACTACGATGATATATATTTTGATTCTGATTCCGAGGATGAAGACAGAGC
AGTACAGGTGACCAAGAAAAAAGAAGAAACAACAAGATTCCAACAATGACGAATTAATGATGAT
CCTGAAAAAGATAACAGAGATCAGGCCTGGGTTGATGCACAGAGAAGGGTTACCATGGTTGGGACCAC
AGAGATCACGTGAACAACAGCCTGTTCCAAATAGTGATGCTGTCTTGAATTGTCCTGCCTGCATGACCAC
ACTTTGCCTTGATTGCCAAAGGCATGAATCATACAAACTCAATATAGAGCAATGTTTGAATGAATTGT
TCTATTAACAAGAGGAGGTTCTAAGATATAAAGCCTCAGAGAACAGGAAGAAAAGGCGGGTCCATAAGA
AGATGAGGTCTAACCAGGAAGATGCTGCTGAGAAGGCAGAGACAGATGTGGAAGAAATCTATCACCAGT
CATGTGCACTGAATGTTCCACTGAAGTGGCAGTCTACGACAAGGATGAAGTCTTTCAATTTTCAATGTT
TTAGCAAGCCATTCC

ACGCGTACGCGGCCGCTCGAGCAGAAACTCATCTCAGAAGAGGATCTGGCAGCAAATGATATCCTGGATT
ACAAGGATGACGACGATAAGGTTTAA



[View online »](#)

Protein Sequence: >RC201501 protein sequence
Red=Cloning site Green=Tags(s)

MNRLPDDYDPYAVEEPSDEEPALSSSEDEVLLHGTPDQKRKLI RECLTGESESSSEDEFEKEMEALN
 STMKTMEDKLSLGTGSSSSGNGKVATAPTRYDDIYFSDSEDEDRAVQVTKKKKKKQHKIPTNDELLYD
 PEKDNRDQAWVDAQRRGYHGLGPQRSREQQPVPNSDAVLNCPACMTTLCLDCQRHESYKTQYRAMFVMNC
 SINKEEVLRYKASENRKRRVHKKMRSNQEDA AEKAETDVEE IYHPVMCTECSTEVAVYDKDEVFHF FNV
 LASHS

TRTRPLEQKLISEEDLAANDILDYKDDDDKV

Chromatograms: https://cdn.origene.com/chromatograms/mk6301_f02.zip

Restriction Sites: SgfI-MluI

Cloning Scheme:



ACCN: NM_018453

ORF Size: 855 bp

OTI Disclaimer: The molecular sequence of this clone aligns with the gene accession number as a point of reference only. However, individual transcript sequences of the same gene can differ through naturally occurring variations (e.g. polymorphisms), each with its own valid existence. This clone is substantially in agreement with the reference, but a complete review of all prevailing variants is recommended prior to use. [More info](#)

OTI Annotation: This clone was engineered to express the complete ORF with an expression tag. Expression varies depending on the nature of the gene.

Components: The ORF clone is ion-exchange column purified and shipped in a 2D barcoded Matrix tube containing 10ug of transfection-ready, dried plasmid DNA (reconstitute with 100 ul of water).

Reconstitution Method:

1. Centrifuge at 5,000xg for 5min.
2. Carefully open the tube and add 100ul of sterile water to dissolve the DNA.
3. Close the tube and incubate for 10 minutes at room temperature.
4. Briefly vortex the tube and then do a quick spin (less than 5000xg) to concentrate the liquid at the bottom.
5. Store the suspended plasmid at -20°C. The DNA is stable for at least one year from date of shipping when stored at -20°C.

RefSeq: [NM_018453.3](#), [NP_060923.2](#)

RefSeq Size: 1363 bp

RefSeq ORF: 858 bp

Locus ID: 55837

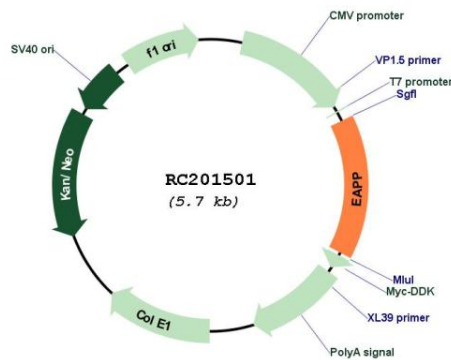
UniProt ID: [Q56P03](#)

Cytogenetics: 14q13.1

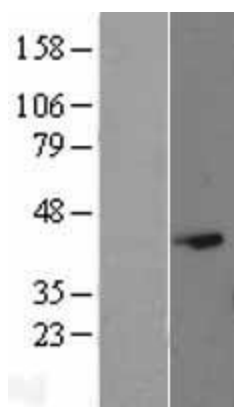
MW: 32.7 kDa

Gene Summary: This gene encodes a phosphoprotein that interacts with several members of the E2F family of proteins. The protein localizes to the nucleus, and is present throughout the cell cycle except during mitosis. It functions to modulate E2F-regulated transcription and stimulate proliferation. Alternative splicing results in multiple transcript variants. [provided by RefSeq, Jan 2016]

Product images:



Circular map for RC201501



Western blot validation of overexpression lysate (Cat# [LY413033]) using anti-DDK antibody (Cat# [TA50011-100]). Left: Cell lysates from untransfected HEK293T cells; Right: Cell lysates from HEK293T cells transfected with RC201501 using transfection reagent MegaTran 2.0 (Cat# [TT210002]).