

Product datasheet for RC201492

RBM22 (NM_018047) Human Tagged ORF Clone

Product data:

Product Type:	Expression Plasmids
Product Name:	RBM22 (NM_018047) Human Tagged ORF Clone
Tag:	Myc-DDK
Symbol:	RBM22
Synonyms:	Cwc2; fSAP47; ZC3H16
Mammalian Cell Selection:	Neomycin
Vector:	pCMV6-Entry (PS100001)
E. coli Selection:	Kanamycin (25 ug/mL)
ORF Nucleotide Sequence:	>RC201492 ORF sequence Red=Cloning site Blue=ORF Green=Tags(s)

TTTTGTAATACGACTCACTATAGGGCGCCGGGAATTCGTCGACTGGATCCGGTACCGAGGAGATCTGCC
GCC**CGATCGCC**

ATGGCGACCTCTCTGGGTTCCAACACCTACAACAGGCAGAACTGGGAGGATGCGGACTTCCCATTCTGT
GCCAGACATGTCTGGAGAAAACCCATATATCCGAATGACCAAAGAAAAGTATGGGAAGGAATGCAAAAT
CTGTGCCAGGCCATTACAGTGTTCGCTGGTGCCTGGAGTCCGCATGCGTTTCAAGAAGACTGAAGTG
TGCCAAACCTGCAGTAAATTGAAGAATGTCTGTCAGACCTGCCTCTTAGACCTAGAGTATGGCCTGCCA
TCCAGGTTTCGTGACGCAGGATTGCTTTTAAAGATGACATGCCAAAGTCAGATGTCAACAAGAGTACTA
TACACAGAATATGGAGAGAGAGATTTCTAACTCTGATGGAACACGCCAGTTGGCATGCTGGGAAAGCC
ACATCTACCAGTGACATGCTGCTCAAACCTGGCCCGGACCACACCTACTACAAAAGGAATCGACCCACA
TTTGCTCCTTCTGGGTGAAAGGAGAGTGTAAAGAGAGGAGGAATGTCCATACAGACATGAGAAGCCTAC
AGATCCAGATGACCCCTTGCTGATCAGAATATTAAGACCGTTATTACGGAATCAATGATCCTGTAGCT
GACAAGCTTCTAAAGCGGGCTTCAACAATGCCTCGGCTGGACCCACCAGAGGATAAACTATCACCACAC
TATATGTTGGTGGTCTAGGTGATACCATTACTGAGACAGATTTAAGAAATCATTTCTACCAGTTCGGAGA
GATCCGGACGATCACTGTTGTGCAGAGACAGCAGTGTGCTTTTATCCAGTTTGCCACACGGCAGGCTGCA
GAAGTGCTGCTGAGAAGTCTTTAATAAGTTGATTGTAATGGCCGAGACTGAATGTGAAATGGGGAA
GATCCCAGGCAGCCAGAGGAAAAGAAAAGAGAAAGATGGAACACAGACTCTGGGATCAAACCTAGAACC
TGTTCCAGGATTGCCAGGAGCTTCTCCTCCTCCTGTCAGCAGAAGAAGAAGCCTCTGCCAACTACTTC
AACTTGCCCCAAGTGGTCTCCAGCTGTGGTGAACATTGCTCTGCCACCGCCCCCTGGCATTGCTCCAC
CCCCACCCAGGTTTTGGGCCACACATGTTCCACCCAATGGGACCACCCCTCTTTTATGCGGGCTCC
AGGACCAATCCACTATCCTTCTCAGGACCTCAGAGGATGGGAGCTCATGCTGAAAACACAGCAGCCCC

ACGCGTACGCGGCCGCTCGAGCAGAACTCATCTCAGAAGAGGATCTGGCAGCAAATGATATCCTGGATT
ACAAGGATGACGACGATAAGGTTTAA



[View online >](#)

Protein Sequence: >RC201492 protein sequence
Red=Cloning site Green=Tags(s)

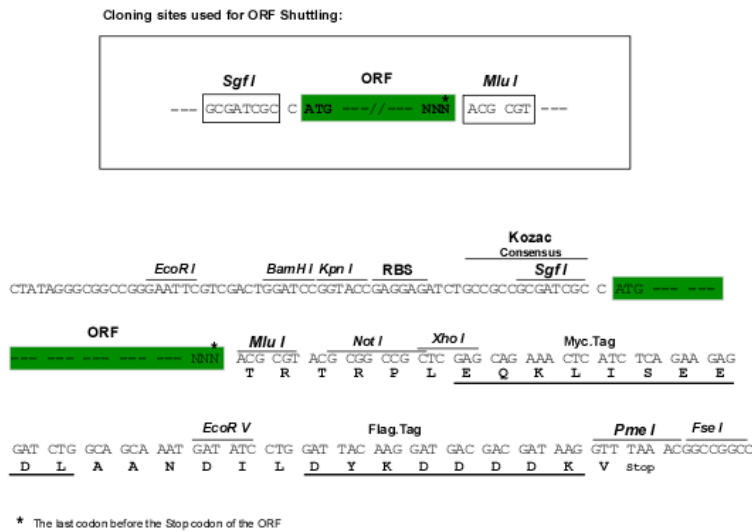
MATSLGSNTYNRQNWEDADFPILCQTCLGENPYIRMTKEKYGKECKICARPFTVFRWCPGVRMRFKKTEV
 CQTCSKLNKVCQTCLLDLEYGLPIQVRDAGLSFKDDMPKSDVNKEYYTQNMEREISNSDGRTPVGMGLGKA
 TSTDMLLKLARTTPYYKRNRPHICSFVWKGECKRGECEPYRHEKPTDPDDPLADQNIKDRYYGINDPVA
 DKLLKRASMPRLDPPEDKTITTLVVGGLGDTITETDLRNHFYQFGEIRITVTVQRQQCAF IQFATRQAA
 EVAAEKSFNKLIVNGRRLLNVKWGRSQAARGKEKEKDGTDDSGIKLEPVPLPGALPPPPAAEEEEASANYF
 NLPPSGPPAVVNIALPPPPGIAPPPPGFGPHMFHPMGPPPPFMRAPGPIHYPSQDPQRMGAHAGKHSSP

TRTRPLEQKLISEEDLAANDILDYKDDDDKV

Chromatograms: https://cdn.origene.com/chromatograms/mk6299_e03.zip

Restriction Sites: SgfI-MluI

Cloning Scheme:



ACCN: NM_018047

ORF Size: 1260 bp

OTI Disclaimer: The molecular sequence of this clone aligns with the gene accession number as a point of reference only. However, individual transcript sequences of the same gene can differ through naturally occurring variations (e.g. polymorphisms), each with its own valid existence. This clone is substantially in agreement with the reference, but a complete review of all prevailing variants is recommended prior to use. [More info](#)

OTI Annotation: This clone was engineered to express the complete ORF with an expression tag. Expression varies depending on the nature of the gene.

Components: The ORF clone is ion-exchange column purified and shipped in a 2D barcoded Matrix tube containing 10ug of transfection-ready, dried plasmid DNA (reconstitute with 100 ul of water).

Reconstitution Method:

1. Centrifuge at 5,000xg for 5min.
2. Carefully open the tube and add 100ul of sterile water to dissolve the DNA.
3. Close the tube and incubate for 10 minutes at room temperature.
4. Briefly vortex the tube and then do a quick spin (less than 5000xg) to concentrate the liquid at the bottom.
5. Store the suspended plasmid at -20°C. The DNA is stable for at least one year from date of shipping when stored at -20°C.

RefSeq: [NM_018047.3](#)

RefSeq Size: 2352 bp

RefSeq ORF: 1263 bp

Locus ID: 55696

UniProt ID: [Q9NW64](#)

Cytogenetics: 5q33.1

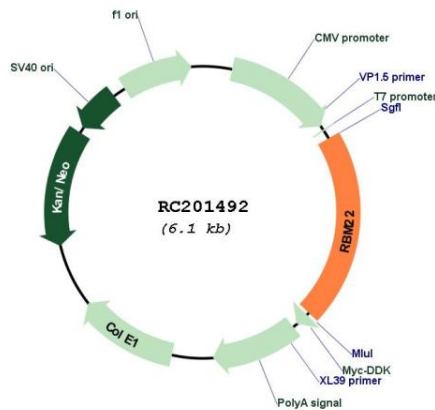
Domains: RRM, zf-CCCH

Protein Pathways: Spliceosome

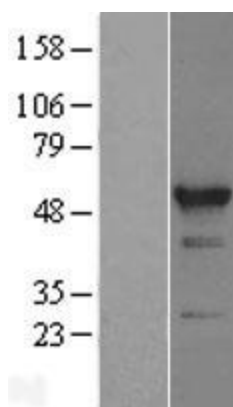
MW: 46.9 kDa

Gene Summary: This gene encodes an RNA binding protein. The encoded protein may play a role in cell division and may be involved in pre-mRNA splicing. Related pseudogenes exist on chromosomes 6, 7, 9, 13, 16, 18, and X. [provided by RefSeq, Mar 2009]

Product images:



Circular map for RC201492



Western blot validation of overexpression lysate (Cat# [LY413357]) using anti-DDK antibody (Cat# [TA50011-100]). Left: Cell lysates from untransfected HEK293T cells; Right: Cell lysates from HEK293T cells transfected with RC201492 using transfection reagent MegaTran 2.0 (Cat# [TT210002]).