

## Product datasheet for **RC201491**

### ELP3 (NM\_018091) Human Tagged ORF Clone

#### Product data:

Product Type:	Expression Plasmids
Product Name:	ELP3 (NM_018091) Human Tagged ORF Clone
Tag:	Myc-DDK
Symbol:	ELP3
Synonyms:	KAT9
Mammalian Cell Selection:	Neomycin
Vector:	pCMV6-Entry (PS100001)
E. coli Selection:	Kanamycin (25 ug/mL)



[View online »](#)

ORF Nucleotide  
Sequence:

>RC201491 ORF sequence  
Red=Cloning site Blue=ORF Green=Tags(s)

TTTTGTAATACGACTCACTATAGGGCGGCCGGAATTCGTCGACTGGATCCGGTACCGAGGAGATCTGCC  
GCCGCGATCGCC

ATGAGGCAGAAGCGGAAAGGAGATCTCAGCCCTGCTGAGCTGATGATGCTGACTATAGGAGATGTTATTA  
AACAACTGATTGAAGCCACGAGCAGGGAAAGACATCGATCTAAATAAGGTGAAAACCAAGACAGCTGC  
CAAATATGGCCTTTCTGCCAGCCCGCCTGGTGGATATCATTGCTGCCGTCCCTCCTCAGTATCGCAAG  
GTCTTGATGCCAAGTTAAAGGCGAAACCCATCAGAACTGCTAGTGGGATTGCTGTCGTGGCTGTGATGT  
GCAAACCCACAGATGTCCACACATCAGTTTTACAGGAAATATATGTGTACTGCCCTGGTGGACCTGA  
TTCTGATTTTGTATTCCACCCAGTCTTACACTGGCTATGAGCCAACCTCCATGAGAGCTATCCGTGCC  
AGATATGACCCTTTCCTACAGACAAGACACCGAATAGAACAGTTAAAACAACCTGGTCATAGTGTGGATA  
AAGTGGAGTTTATTGTGATGGTGGAACTTTATGGCCCTCCAGAAGAATACAGAGATTATTTTATTTCG  
AAATTTACATGATGCCTTACAGACATACTTCCAACAATATTTACGAGGCAGTCAAGTATTCTGAGAGA  
AGCCTCACAAAGTGATTGGAATTAATTTGAAACCAGACCAGATTACTGCATGAAGCGACATTTAAGTG  
ACATGTTGACCTATGGCTGCACAAGGCTGGAGATTGGGGTGCAGAGTGTTTATGAAGATGTGGCTAGAGA  
CACCAACAGGGGCCACACTGTGAAGGCAGTGTGTGAGTCAATTCACCTGGCCAAAGATCCGGTTTTAA  
GTGGTGGCCCATATGATGCCTGACCTGCCAAACGTGGGACTAGAAAGAGACATTGAACAGTTCACAGAGT  
TTTTTGAGAACCCTGCTTTTCGTCGATGGGCTGAAACTCTATCCTACCTGGTATTGCTGGGACCGG  
GCTTTATGAGCTTTGAAATCAGGAAGATAAAGAGTTACTCTCCTAGTGACCTGGTTGAATTGGTGGCT  
CGGATCTAGCCCTCGTGCCTCCATGGACTCGAGTGTACCGAGTACAGAGGGATATTCCAATGCCTTTAG  
TTAGCTCAGGAGTACAGCATGGTAACCTGAGAGAGCTGGCACTTGCAAGAATGAAAGCCTCGGAATACA  
GTGTCGAGATGTGAGAACCAGAGAAGTTGGAATCCAAGAAATTCATCACAAAGTACGGCCATACCGGTT  
GAATTGTAAGGAGAGATTATGTTGCAAAATGGTGGCTGGGAAACATTCTTGTACATACGAAGACCCAGATC  
AAGACATTTTATTGATGGCCTCCTACGATTACGCAAGTGTTCAGAAGAACTTTCCGTTTTCGAATTGGTGG  
AGGTGTCTCCATAGTACGAGAGCTGCATGTGTATGGGAGTGTGGTCCCTGTGAGCAGCCGGGATCCTACT  
AAATTTACAGCATCAGGGATTTGGCATGCTGCTGATGGAGGAAGCAGAAAGAATAGCTAGAGAAGAATG  
GGTCTGGGAAAATCGCTGTGATATCAGGGTGGCACCAGGAATTATTATAGAAAGATCGGCTACAGATT  
ACAAGGCCGTACATGGTGAAGATGCTGAAA

ACGCGTACGCGGCCGCTCGAGCAGAAACTCATCTCAGAAGAGGATCTGGCAGCAAATGATATCCTGGATT  
ACAAGGATGACGACGATAAGGTTTAA

## Protein Sequence:

>RC201491 protein sequence  
Red=Cloning site Green=Tags(s)

MRQKRKGDLSPAELMMLTIGDVIKQLIEAHEQKIDIDLNKVKTKTAAKYGLSAQPRLVDIIAAVPPQYRK  
VLMPKLKAKPIRTASGIAVVAVMCKPHRCPHISFTGNICVYCPGGPDSDFEYSTQSYTYEPTSMRAIRA  
RYDPLFQTRHRIEQLKQLGHSVDKVEFIVMGGTFMALPEEYRDYFIRNLHDALSGHTSNNIYEAVKYSER  
SLTKCIGITIEIETRPDYCMKRHLSMDLTYGCTRLEIGVQSVYEDVARDTNRGHTVKAVCESFHLAKDSGFK  
VVAHMMPDLPNVGLERDIEQTEFFENPAFRPDGLKLYPTLVIRGTGLYELWKSGRYKSYSPSDLVELVA  
RILALVPPWTRVYRVQRDIPMPLVSSGVEHGNLRELALARMKDLGIQCRDVRTREVGIQEIHKKVRPYQV  
ELVRRDYVANGGWETFLSYEDPDQDILIGLLRLRKCSEETFRFELGGVSVIVRELHVVYGSVVPVSSRDPT  
KFQHQFGMLLMEEAERIAREEHSGKIAVISGVGTRNYRKYRIGYRLQGPYMKMLK

TRTRPLEQKLISEEDLAANDILDYKDDDDKV

## Chromatograms:

[https://cdn.origene.com/chromatograms/mk6030\\_g03.zip](https://cdn.origene.com/chromatograms/mk6030_g03.zip)

## Restriction Sites:

Sgfl-Mlul

**Cloning Scheme:**


**ACCN:** NM\_018091

**ORF Size:** 1641 bp

**OTI Disclaimer:** The molecular sequence of this clone aligns with the gene accession number as a point of reference only. However, individual transcript sequences of the same gene can differ through naturally occurring variations (e.g. polymorphisms), each with its own valid existence. This clone is substantially in agreement with the reference, but a complete review of all prevailing variants is recommended prior to use. [More info](#)

**OTI Annotation:** This clone was engineered to express the complete ORF with an expression tag. Expression varies depending on the nature of the gene.

**Components:** The ORF clone is ion-exchange column purified and shipped in a 2D barcoded Matrix tube containing 10ug of transfection-ready, dried plasmid DNA (reconstitute with 100 ul of water).

- Reconstitution Method:**
1. Centrifuge at 5,000xg for 5min.
  2. Carefully open the tube and add 100ul of sterile water to dissolve the DNA.
  3. Close the tube and incubate for 10 minutes at room temperature.
  4. Briefly vortex the tube and then do a quick spin (less than 5000xg) to concentrate the liquid at the bottom.
  5. Store the suspended plasmid at -20°C. The DNA is stable for at least one year from date of shipping when stored at -20°C.

**RefSeq:** [NM\\_018091.6](#)

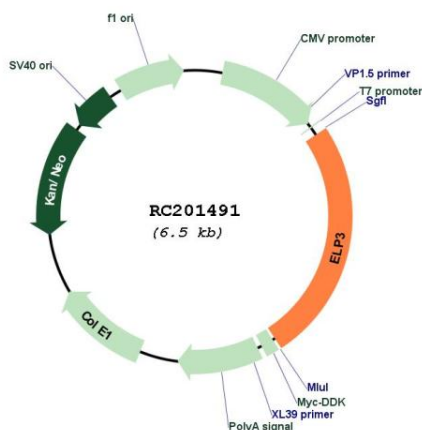
**RefSeq Size:** 3232 bp

**RefSeq ORF:** 1644 bp

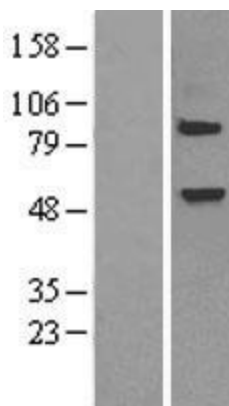
**Locus ID:** 55140

**UniProt ID:** [Q9H9T3](#)

**Cytogenetics:** 8p21.1  
**Domains:** Acetyltransf, Elp3, Radical\_SAM  
**MW:** 62.3 kDa  
**Gene Summary:** ELP3 is the catalytic subunit of the histone acetyltransferase elongator complex, which contributes to transcript elongation and also regulates the maturation of projection neurons (Creppe et al., 2009 [PubMed 19185337]).[supplied by OMIM, Apr 2009]

**Product images:**


Circular map for RC201491



Western blot validation of overexpression lysate (Cat# [LY402648]) using anti-DDK antibody (Cat# [TA50011-100]). Left: Cell lysates from untransfected HEK293T cells; Right: Cell lysates from HEK293T cells transfected with RC201491 using transfection reagent MegaTran 2.0 (Cat# [TT210002]).