

Product datasheet for RC201489

ZDHHC4 (NM_018106) Human Tagged ORF Clone

Product data:

Product Type:	Expression Plasmids
Product Name:	ZDHHC4 (NM_018106) Human Tagged ORF Clone
Tag:	Myc-DDK
Symbol:	ZDHHC4
Synonyms:	ZNF374
Mammalian Cell Selection:	Neomycin
Vector:	pCMV6-Entry (PS100001)
E. coli Selection:	Kanamycin (25 ug/mL)
ORF Nucleotide Sequence:	>RC201489 ORF sequence Red=Cloning site Blue=ORF Green=Tags(s)

TTTTGTAATACGACTCACTATAGGGCGGCCGGAATTCGTCGACTGGATCCGGTACCGAGGAGATCTGCC
GCC**CGCATCGCC**

ATGGACTTTCTGGTCTCTTCTTGTCTACCTGGCTTCGGTGCTGATGGGTCTTGTCTTATCTGCGTCT
GCTCGAAAACCCATAGCTTGAAAGGCCTGGCCAGGGGAGGAGCACAGATATTTTCTGTATAATTCCAGA
ATGTCTTCAGAGAGCCGTGCATGGATTGCTTCATTACCTTTCCATACGAGAAACCACACCTTCATTGTC
CTGCACCTGGTCTTGAAGGGATGGTTTATACTGAGTACACCTGGGAAGTATTTGGCTACTGTCAGGAGC
TGGAGTTGTCCTTGCATTACCTTCTTCTGCCCTATCTGCTGCTAGGTGTAACCTGTTTTTTTCCACCT
GACTTGTGGAACCAATCCTGGCATTATAACAAAAGCAAATGAATTATTATTTCTTCATGTTTATGAATTT
GATGAAGTGATGTTTCCAAGAACGTGAGGTGCTCTACTTGTGATTTAAGGAAACCAGCTCGATCCAAGC
ACTGCAGTGTGTGTAACCTGGTGTGTGCACCGTTTCGACCATCACTGTGTTGGGTGAACAACCTGCATCGG
GGCCTGGAACATCAGGTACTTCCATCTACGTCTTGACCTTGACGGCCTCGGCTGCCACCGTCGCCATT
GTGAGCACCACTTTCTGGTCCACTTGGTGGTGTGTCAGATTTATACCAGGAGACTTACATCGATGACC
TTGGACACCTCCATGTTATGGACACGGTCTTCTTATTTCAGTACCTGTTCTGACTTTTCCACGGATTGT
CTTCATGCTGGCTTTGTCGTGGTCTGAGCTTCTCCTGGGTGGCTACCTGTTGTTGTCTGTATCTG
GCGGCCACCAACCAGACTACTAACGAGTGGTACAGAGGTGACTGGCCTGGTCCAGCGTTGTCCTTGT
TGGCCTGGCCTCCGTGAGCAGAGCCCAAGTCCACCGGAACATTCACTCCATGGGCTTCGGAGCAACCT
TCAAGAGATCTTCTACCTGCCTTTCATGTCATGAGAGGAAGAAACAAGAA

ACGCGTACGCGGCCGCTCGAGCAGAAACTCATCTCAGAAGAGGATCTGGCAGCAAATGATATCCTGGATT
ACAAGGATGACGACGATAAGGTTTAA



[View online »](#)

Protein Sequence: >RC201489 protein sequence
Red=Cloning site Green=Tags(s)

MDFLVLFVFLYASVLMGLVLICVCSKTHSLKGLARGGAQIFSCIIPECLQRAVHGLLHLYLFHTRNHTFIV
 LHLVLQGMVYTEYTWEVFGYCQELELSLHYLLPYLLLGNLFFFLLTCGTNPGIITKANELLFLHVVYEF
 DEVMFPKNVRCSTCDLRKPARSKHCSVCNWCVHRFDHHCVVWNNCIGAWNIRYFLIYVLTASAATVAI
 VSTTFLVHLVMSDLYQETYIDDLGHLHVM DTVFLIQYLFTFPRIVFMLGFVVLSFLLGGYLLFVLYL
 AATNQTTNEWYRGDWAWCQRCPVAVPPSAEPQVHRNIHSHGLRSNLQEIFLPAFPCHERKKQE

TRTRPLEQKLISEEDLANDILDYKDDDDKV

Chromatograms: https://cdn.origene.com/chromatograms/mk6018_a10.zip

Restriction Sites: SgfI-MluI

Cloning Scheme:

Cloning sites used for ORF Shuttling:



* The last codon before the Stop codon of the ORF

ACCN: NM_018106

ORF Size: 1032 bp

OTI Disclaimer: The molecular sequence of this clone aligns with the gene accession number as a point of reference only. However, individual transcript sequences of the same gene can differ through naturally occurring variations (e.g. polymorphisms), each with its own valid existence. This clone is substantially in agreement with the reference, but a complete review of all prevailing variants is recommended prior to use. [More info](#)

OTI Annotation: This clone was engineered to express the complete ORF with an expression tag. Expression varies depending on the nature of the gene.

Components: The ORF clone is ion-exchange column purified and shipped in a 2D barcoded Matrix tube containing 10ug of transfection-ready, dried plasmid DNA (reconstitute with 100 ul of water).

Reconstitution Method:

1. Centrifuge at 5,000xg for 5min.
2. Carefully open the tube and add 100ul of sterile water to dissolve the DNA.
3. Close the tube and incubate for 10 minutes at room temperature.
4. Briefly vortex the tube and then do a quick spin (less than 5000xg) to concentrate the liquid at the bottom.
5. Store the suspended plasmid at -20°C. The DNA is stable for at least one year from date of shipping when stored at -20°C.

RefSeq: [NM_018106.4](#)

RefSeq Size: 1413 bp

RefSeq ORF: 1035 bp

Locus ID: 55146

UniProt ID: [Q9NPG8](#)

Cytogenetics: 7p22.1

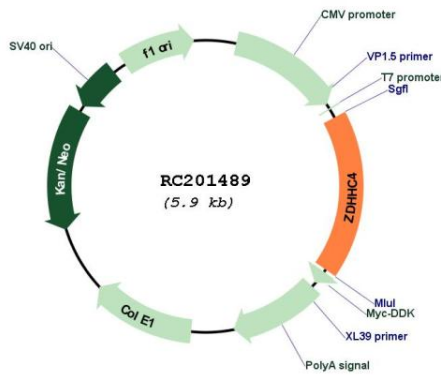
Domains: zf-DHHC

Protein Families: Transmembrane

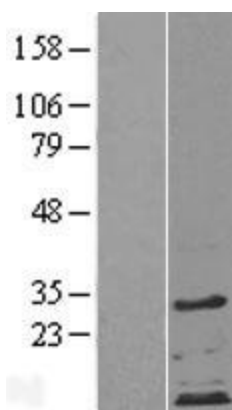
MW: 39.8 kDa

Gene Summary: Palmitoyltransferase that could catalyze the addition of palmitate onto protein substrates including the D(2) dopamine receptor DRD2.[UniProtKB/Swiss-Prot Function]

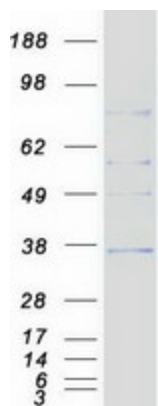
Product images:



Circular map for RC201489



Western blot validation of overexpression lysate (Cat# [LY402650]) using anti-DDK antibody (Cat# [TA50011-100]). Left: Cell lysates from untransfected HEK293T cells; Right: Cell lysates from HEK293T cells transfected with RC201489 using transfection reagent MegaTran 2.0 (Cat# [TT210002]).



Coomassie blue staining of purified ZDHHC4 protein (Cat# [TP301489]). The protein was produced from HEK293T cells transfected with ZDHHC4 cDNA clone (Cat# RC201489) using MegaTran 2.0 (Cat# [TT210002]).