

Product datasheet for RC201479

ERGIC2 (NM_016570) Human Tagged ORF Clone

Product data:

Product Type:	Expression Plasmids
Product Name:	ERGIC2 (NM_016570) Human Tagged ORF Clone
Tag:	Myc-DDK
Symbol:	ERGIC2
Synonyms:	cd002; CDA14; Erv41; PTX1
Mammalian Cell Selection:	Neomycin
Vector:	pCMV6-Entry (PS100001)
E. coli Selection:	Kanamycin (25 ug/mL)
ORF Nucleotide Sequence:	>RC201479 ORF sequence Red=Cloning site Blue=ORF Green=Tags(s)

TTTTGTAATACGACTCACTATAGGGCGGCCGGAATTCGTCGACTGGATCCGGTACCGAGGAGATCTGCC
GCC**CGATCGCC**

ATGAGGCGACTGAATCGGAAAAAACTTTAAGTTTGGTAAAAGAGTTGGATGCCTTTCCGAAGTTCCTG
AGAGCTATGTAGAGACTTCAGCCAGTGGAGGTACAGTTTCTCTAATAGCATTTACAACACTATGGCTTTATT
AACATAATGGAATTCTCAGTATATCAAGATACATGGTGAAGTATGAATACGAAGTAGACAAGGATTTT
TCTAGCAAATTAAGAATTAATATAGATATTACTGTTGCCATGAAGTGTCAATATGTTGGAGCGGATGTAT
TGGATTTAGCAGAAACAATGGTTGCATCTGCAGATGGTTTAGTTTATGAACCAACAGTATTTGATCTTTC
ACCACAGCAGAAAAGAGTGGCAGAGGATGCTGCAGCTGATTAGAGTAGGCTACAAGAAGAGCATTCACTT
CAAGATGTGATATTTAAAAGTGCTTTAAAAGTACATCAACAGCTCTCCACCAAGAGAAGATGATTCAT
CACAGTCTCCAAATGCATGCAGAATTCATGGCCATCTATATGTCAATAAAGTAGCAGGGAATTTTCACAT
AACAGTGGGCAAGGCAATTCACATCCTCGTGGTCATGCACATTTGGCAGCACTTGTCAACCATGAATCT
TACAATTTTCTCATAGAATAGATCATTGTCTTTGGAGAGCTTGTCCAGCAATTAATCCTTTAG
ATGGAAGTAAAAAATGCTATAGATCACAACCAGATGTTCCAATATTTTATTACAGTTGTGCCAACAAA
ACTACATACATATAAAAATCAGCAGACACCCATCAGTTTTCTGTGACAGAAAAGGGAACGTATCATTAAAC
CATGCTGCAGGCAGCCATGGAGTCTCTGGGATTTTATGAAATATGATCTCAGTTCTCTTATGGTGACAG
TTACTGAGGAGCACATGCCATTCTGGCAGTTTTTTGTAAGACTCTGTGGTATTGTTGGAGGAATCTTTTC
AAACAACAGGCATGTTACATGGAATTGAAAAATTTATAGTTGAAATAATTTGCTGTCGTTTCAGACTTGGA
TCCTATAAACCTGTCAATTCTGTTCTTTTGGAGGATGGCCACACAGACAACCACTTACCTTTTTAGAAA
ATAATACACAT

ACGCGTACGCGGCCGCTCGAGCAGAAAACATCTCAGAAGAGGATCTGGCAGCAATGATATCCTGGATT
ACAAGGATGACGACGATAAGGTTTAA



[View online »](#)

Protein Sequence: >RC201479 protein sequence
Red=Cloning site Green=Tags(s)

MRRLNRKKTL SLVKELDAFPKVPESYVETSASGGTVSLIAFTTMALLTIMEFSVYQDTWMKYEYVDKDF
 SSKLRINIDITVAMKCQYVGADVLDLAETMVASADGLVYEPTVFDLSPQQKEWQRLQLIQSRLQEEHSL
 QDVIFKSAFKSTALPPREDDSSQSPNACRIHGHLVYVNVAGNFHITVGKAIPHPRGHAHLAALVNHES
 YNFSHRIDHLSFGELVPAIINPLDGTKEIAIDHNQMFQYFITVVP TKLHTYKISADTHQFSYTERERIIN
 HAAGSHGVSGIFMKYDLSSLMTVTVEEHMPFWQFFVRLCGIVGGIFSTTGMLHGIGKFIVEIICCRFRLG
 SYKPVNSVPFEDGHTDNHLPLENNTH

TRTRPLEQKLISEEDLAANDILDYKDDDDKV

Chromatograms: https://cdn.origene.com/chromatograms/mk6301_b04.zip

Restriction Sites: SgfI-MluI

Cloning Scheme:



ACCN: NM_016570

ORF Size: 1131 bp

OTI Disclaimer: The molecular sequence of this clone aligns with the gene accession number as a point of reference only. However, individual transcript sequences of the same gene can differ through naturally occurring variations (e.g. polymorphisms), each with its own valid existence. This clone is substantially in agreement with the reference, but a complete review of all prevailing variants is recommended prior to use. [More info](#)

OTI Annotation: This clone was engineered to express the complete ORF with an expression tag. Expression varies depending on the nature of the gene.

Components: The ORF clone is ion-exchange column purified and shipped in a 2D barcoded Matrix tube containing 10ug of transfection-ready, dried plasmid DNA (reconstitute with 100 ul of water).

Reconstitution Method:

1. Centrifuge at 5,000xg for 5min.
2. Carefully open the tube and add 100ul of sterile water to dissolve the DNA.
3. Close the tube and incubate for 10 minutes at room temperature.
4. Briefly vortex the tube and then do a quick spin (less than 5000xg) to concentrate the liquid at the bottom.
5. Store the suspended plasmid at -20°C. The DNA is stable for at least one year from date of shipping when stored at -20°C.

RefSeq: [NM_016570.3](#)

RefSeq Size: 1781 bp

RefSeq ORF: 1134 bp

Locus ID: 51290

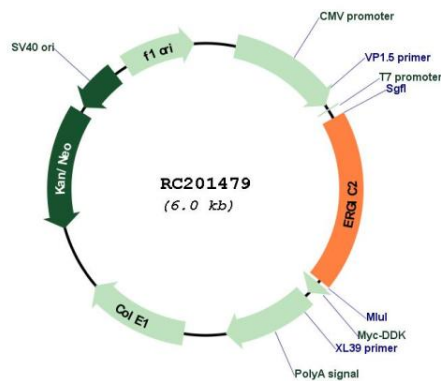
UniProt ID: [Q96RQ1](#)

Cytogenetics: 12p11.22

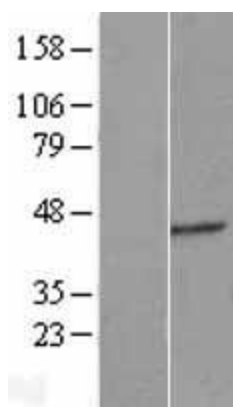
MW: 42.5 kDa

Gene Summary: ERGIC2, or PTX1, is a ubiquitously expressed nuclear protein that is downregulated in prostate carcinoma (Kwok et al., 2001 [PubMed 11445006]).[supplied by OMIM, Aug 2008]

Product images:



Circular map for RC201479



Western blot validation of overexpression lysate (Cat# [LY413893]) using anti-DDK antibody (Cat# [TA50011-100]). Left: Cell lysates from untransfected HEK293T cells; Right: Cell lysates from HEK293T cells transfected with RC201479 using transfection reagent MegaTran 2.0 (Cat# [TT210002]).