

## Product datasheet for RC201472

### SPCS1 (NM\_014041) Human Tagged ORF Clone

#### Product data:

**Product Type:** Expression Plasmids  
**Product Name:** SPCS1 (NM\_014041) Human Tagged ORF Clone  
**Tag:** Myc-DDK  
**Symbol:** SPCS1  
**Synonyms:** HSPC033; SPC1; SPC12; YJR010C-A  
**Mammalian Cell Selection:** Neomycin  
**Vector:** pCMV6-Entry (PS100001)  
**E. coli Selection:** Kanamycin (25 ug/mL)  
**ORF Nucleotide Sequence:** >RC201472 ORF sequence  
Red=Cloning site Blue=ORF Green=Tags(s)

TTTTGTAATACGACTCACTATAGGGCGGCCGGAATTCGTCGACTGGATCCGGTACCGAGGAGATCTGCC  
GCC**CGATCGCC**

ATGCTGGAGCATCTGAGCTCGCTGCCACGCAGATGGATTACAAGGGCCAGAAGCTAGCTGAACAGATGT  
TTCAGGGAATTATTCTTTTTCTGCAATAGTTGGATTTATCTACGGGTACGTGGTGAACAGTTCGGGTG  
GACTGTCTATATAGTTATGGCCGATTTGCTTTTCATGTTGGCCAGCTGACACTTCTCCATGGCCC  
ATCTATCGCCGGCATCTCTCAAGTGGTTACCTGTTCAAGAATCAAGCACAGACGACAAGAAACCAGGGG  
AAAGAAAATTAAGAGGCATGCTAAAAATAAT

**ACGCGT**ACGCGGCCGCTCGAGCAGAAACTCATCTCAGAAGAGGATCTGGCAGCAAATGATATCCTGGATT  
ACAAGGATGACGACGATAAGGTTTAA

**Protein Sequence:** >RC201472 protein sequence  
Red=Cloning site Green=Tags(s)  
MLEHLSSLPTQMDYKQKLAEQMFQGIILFSAIVGFIYGYVAEQFGWTVYIVMAGFAFSCLAQLTLPPWP  
IYRRHPLKWLVPQESSTDDKPKGERKIKRHAKNN

**TR**TRPLEQKLISEEDLAANDILDYKDDDDKV

**Chromatograms:** [https://cdn.origene.com/chromatograms/mk6301\\_g03.zip](https://cdn.origene.com/chromatograms/mk6301_g03.zip)

**Restriction Sites:** SgfI-MluI

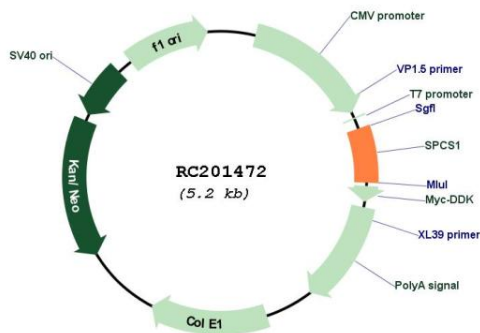


[View online »](#)

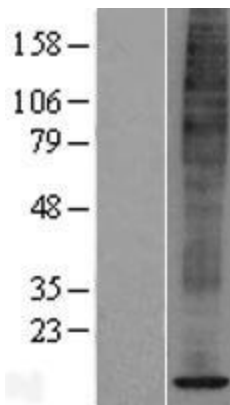


**UniProt ID:** Q9Y6A9  
**Cytogenetics:** 3p21.1  
**Protein Families:** Protease, Transmembrane  
**MW:** 12 kDa  
**Gene Summary:** Component of the microsomal signal peptidase complex which removes signal peptides from nascent proteins as they are translocated into the lumen of the endoplasmic reticulum. [UniProtKB/Swiss-Prot Function]

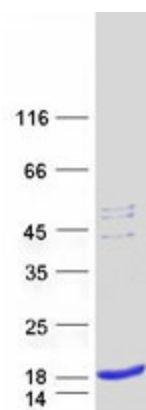
**Product images:**



Circular map for RC201472



Western blot validation of overexpression lysate (Cat# [LY415515]) using anti-DDK antibody (Cat# [TA50011-100]). Left: Cell lysates from untransfected HEK293T cells; Right: Cell lysates from HEK293T cells transfected with RC201472 using transfection reagent MegaTran 2.0 (Cat# [TT210002]).



Coomassie blue staining of purified SPCS1 protein (Cat# [TP301472]). The protein was produced from HEK293T cells transfected with SPCS1 cDNA clone (Cat# RC201472) using MegaTran 2.0 (Cat# [TT210002]).