

Product datasheet for **RC201468**

RIPOR2 (NM_015864) Human Tagged ORF Clone

Product data:

Product Type:	Expression Plasmids
Product Name:	RIPOR2 (NM_015864) Human Tagged ORF Clone
Tag:	Myc-DDK
Symbol:	RIPOR2
Synonyms:	C6orf32; DFNB104; DIFF40; DIFF48; FAM65B; MYONAP; PL48
Mammalian Cell Selection:	Neomycin
Vector:	pCMV6-Entry (PS100001)
E. coli Selection:	Kanamycin (25 ug/mL)



[View online »](#)

ORF Nucleotide Sequence:

>RC201468 ORF sequence
 Red=Cloning site Blue=ORF Green=Tags(s)

TTTTGTAATACGACTCACTATAGGGCGGCCGGGAATTCGTCGACTGGATCCGGTACCGAGGAGATCTGCC
 GCC**CGCATCGCC**

ATGTTGGTAGGATCCCAGTCTTTTTCGCCTGGAGGGCCAATGGGATCATTAGAAGCCAGTCTTTGCGG
 GTTTCAGCGGCTCCAGGAAAGGCGATCCAGGTGTAACCTCTTATTGAAAATTCCTCCGCTCTCAAGAA
 GCCTCAGGCCAAACTGAAGAAAATGCACAAATTTAGGCCACAAAAACAACATCCCCCAAAGAGCCTCAG
 CCTAAAAGGGTGAAGAAGTCTACAGGGCCTTGAAAAATGGACTTGATGAATATCTGGAGGTTACCAGAG
 CGGAGCTGGACAAGTTGACAGCTCAGTAAAAGATATGAAAAGAACTCTCGCCTGGGTGTACTGTATGA
 CCTAGACAAGCAAATTAACAATTGAAAGATACATGAGACGCCTGGAGTTTCATATAAGTAAGGTAGAT
 GAACTCTATGAAGCTTATTGTATCCAGCGACGCCTCCAGGATGGTGCCAGCAAAATGAAGCAAGCCTTCG
 CAACATCCCCTGCCAGCAAAGCTGCCCGGAGAGTCTGACAGAGATCAATCGGAGCTTCAAGGAGTACAC
 AGAGAATATGTGCACCATTGAAGTGGAGCTAGAGAATCTGCTGGGAGAATTCTCCATCAAGATGAAAGGT
 CTGGCTGGCTTTGCACGCCTCTGTCTGGAGATCAATATGAAATTTTCATGAAGTATGGCCGGCAGCGGT
 GGAAACTGAAAGGCAAAATAGAAGTAAATGGCAAGCAGAGCTGGGATGGAGAAGAAACAGTTTTTCTGCC
 CCTGATAGTTGGGTTTCATCTCCATCAAGGTCACGGAGCTCAAAGGGCTAGCAACTCACATCCTGGTAGGT
 AGCGTGACCTGTGAGACCAAGAGCTGTTTGCAGCCCACCTCAGGTAGTGGCTGTGCACATCAATGACC
 TTGGTACCATCAAACCTGAACTGAAATCACCTGGTATCCATTTGACGTGGAGGACATGACCGCATCCTC
 AGGCGCTGGGAACAAGGCAGCAGCCCTTCAAGAGGAAATGTCCATGTACAGCCAGGTTACCCCGAAACG
 CCCACCTTCAAAGACCACTCCTTCTTTTCAAATCTACCTGATGACATCTTTGAAAATGGAAGGCAGCCG
 AGGAGAAAATGCCACTGTGCTCAGCTCAGTTCAGTACCTGCCAACGGGGACTGCGCCCTCACCTCCCCTC
 AACAGGCTCCCCTTCCAACCTCAACAAATCAGAAATTACCATCACCCCTGCGGAGTTTAACTCAGCAGC
 TTGGCCTCCCAGAATGAGGGTATGGATGACACAGCTCAGCATCTTCCAGGAACTCCCTGGGAGAAGGCC
 AAGAGCCAAAGTACACCTGAAGGAGGAAGACCCAGAGGAGCCAGAAAACCTGCCTCGGCCCATCTGA
 GGCTTGCCGCGACAGTCTCAGGTGCTGGGGCTGAGCACCTGTTCTTGAGAATGATGTTGCAGAAGCA
 CTTCTGCAAGAGTCTGAGGAGCCTCTGAGCTCAAGCCTGTGAACTGGACACTTCGGAAGGAAACATCA
 CAAAGCAGCTGGTCAAGAGGCTCACATCTGCAGAGGTGCCAATGGCCACAGACAGGCTGCTCTGAGGG
 TTCTGTTGGTGGAGAATCTGAAGGCTGCAGATCCTTTCTAGATGGAAGCTTAGAGGATGCTTTAATGGG
 CTTTTACTTGATTAGAACCACATAAAGAGCAGTATAAAGAGTTTCAGGATCTGAACCAAGAAGTATGA
 ATTTGGATGATATTCTAAAAAAG

ACGCGTACGCGGCGGCTCGAGCAGAAACTCATCTCAGAAGAGGATCTGGCAGCAAATGATATCCTGGATT
 ACAAGGATGACGACGATAAGGTTTAA

Protein Sequence:

>RC201468 protein sequence
 Red=Cloning site Green=Tags(s)

MLVGSQSFSPGGPNGIIRSQSFAGFSGLQERRSRCNSFIENSSALKKPQAKLKKMHNLGHKNNPPKEPQ
 PKRVEEVYRALKNGLDEYLEVHQTELDKLTAKLQKDMKRNRLGVLVDLQIKTIERYMRRLEFHISKVD
 ELYEAYCIQRRLLQDGASKMKQAFATSPASKAARESLTEINRSFKEYTENMCTIEVELENLLGEFSIKMKG
 LAGFARLCPGDQYEIFMKYGRQRWKLKGLIEVNGKQSWDGEETVFLPLIVGFISIKVTELGKLATHILVG
 SVTCETKELFAARPQVAVDINDLGTIKLNLEITWYPFDVEDMTASSGAGNKAALQRRMSMYSQGTPEP
 PTFKDHFFSNLPDDIFENGKAAEEKMPLSLSFSDLPNGDCALTSHTGSPSNSTNPEITITPAEFNLSS
 LASQNEGMDTSSASSRNSLGEQEPKSHLKEEDPEEPRKPASAPSEACRRQSSGAGAEHLFLENDVAEA
 LLQESEEASELKPVELDTSEGNITKQLVKRLTSAEVPMATDRLLSEGSVGESEGCERSFLDGSLEDAFNG
 LLLALEPHKEQYKEFQDLNQEVMNLDLILKK

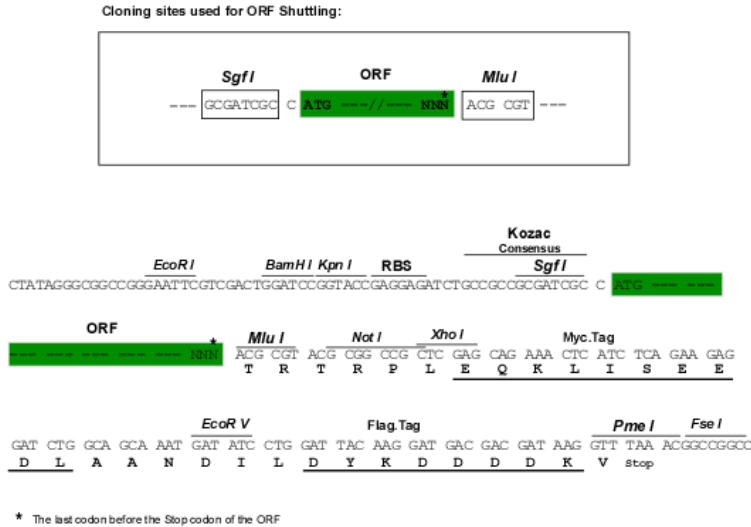
TRTRPLEQKLISEEDLAANDILDYKDDDDKV

Chromatograms:

https://cdn.origene.com/chromatograms/mk6300_g05.zip

Restriction Sites: SgfI-MluI

Cloning Scheme:



ACCN: NM_015864

ORF Size: 1773 bp

OTI Disclaimer: The molecular sequence of this clone aligns with the gene accession number as a point of reference only. However, individual transcript sequences of the same gene can differ through naturally occurring variations (e.g. polymorphisms), each with its own valid existence. This clone is substantially in agreement with the reference, but a complete review of all prevailing variants is recommended prior to use. [More info](#)

OTI Annotation: This clone was engineered to express the complete ORF with an expression tag. Expression varies depending on the nature of the gene.

Components: The ORF clone is ion-exchange column purified and shipped in a 2D barcoded Matrix tube containing 10ug of transfection-ready, dried plasmid DNA (reconstitute with 100 ul of water).

- Reconstitution Method:
1. Centrifuge at 5,000xg for 5min.
 2. Carefully open the tube and add 100ul of sterile water to dissolve the DNA.
 3. Close the tube and incubate for 10 minutes at room temperature.
 4. Briefly vortex the tube and then do a quick spin (less than 5000xg) to concentrate the liquid at the bottom.
 5. Store the suspended plasmid at -20°C. The DNA is stable for at least one year from date of shipping when stored at -20°C.

RefSeq: [NM_015864.4](#)

RefSeq Size: 2462 bp

RefSeq ORF: 1776 bp

Locus ID: 9750

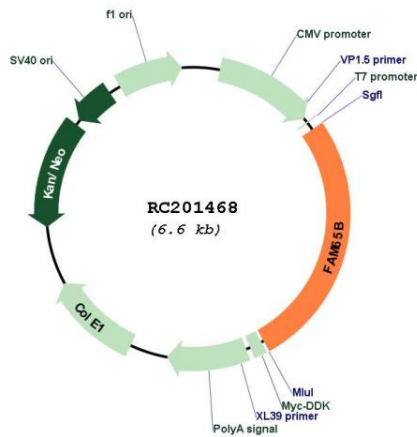
UniProt ID: [Q9Y4F9](#)

Cytogenetics: 6p22.3

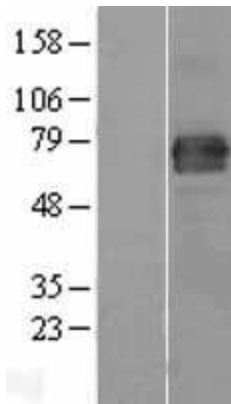
MW: 65.7 kDa

Gene Summary: This gene encodes an atypical inhibitor of the small G protein RhoA. Inhibition of RhoA activity by the encoded protein mediates myoblast fusion and polarization of T cells and neutrophils. The encoded protein is a component of hair cell stereocilia that is essential for hearing. A splice site mutation in this gene results in hearing loss in human patients. [provided by RefSeq, Sep 2016]

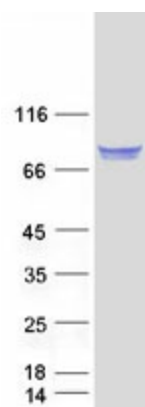
Product images:



Circular map for RC201468



Western blot validation of overexpression lysate (Cat# [LY414349]) using anti-DDK antibody (Cat# [TA50011-100]). Left: Cell lysates from untransfected HEK293T cells; Right: Cell lysates from HEK293T cells transfected with RC201468 using transfection reagent MegaTran 2.0 (Cat# [TT210002]).



Coomassie blue staining of purified RIPOR2 protein (Cat# [TP301468]). The protein was produced from HEK293T cells transfected with RIPOR2 cDNA clone (Cat# RC201468) using MegaTran 2.0 (Cat# [TT210002]).