

Product datasheet for RC201466

POLR1D (NM_015972) Human Tagged ORF Clone

Product data:

Product Type: Expression Plasmids
Product Name: POLR1D (NM_015972) Human Tagged ORF Clone
Tag: Myc-DDK
Symbol: POLR1D
Synonyms: AC19; POLR1C; RPA9; RPA16; RPAC2; RPC16; RPO1-3; TCS2
Mammalian Cell Selection: Neomycin
Vector: pCMV6-Entry (PS100001)
E. coli Selection: Kanamycin (25 ug/mL)
ORF Nucleotide Sequence: >RC201466 ORF sequence
Red=Cloning site Blue=ORF Green=Tags(s)

TTTTGTAATACGACTCACTATAGGGCGCCGGAATTCGTCGACTGGATCCGGTACCGAGGAGATCTGCC
GCC**CGATCGCC**

ATGGAAGAGGATCAGGAGCTGGAGAGAAAAATATCTGGATTGAAGACCTCAATGGCTGAAGGCGAGAGGA
AGACAGCCCTGGAAATGGTCCAGGCAGCTGGAACAGATAGACACTGTGTGACATTTGTATTGCACGAGGA
AGACCATACCCTAGGAAATCTCTACGTTACATGATCATGAAGAACCCGGAAGTGAATTTTGTGGTTAC
ACTACGACCCATCCTTCAGAGAGCAAAATTAATTTACGCATTGACTCGAGGTACCCTCCAGCTGTTG
AGCCATTTAGAGAGGCCTGAATGAGCTCATGAATGTCTGCCAACATGTGCTTGACAAGTTGAGGCCAG
CATAAAGGACTATAAGGATCAAAAAGCAAGCAGAAATGAATCCACATTC

ACGCGTACGCGGCCGCTCGAGCAGAAACTCATCTCAGAAGAGGATCTGGCAGCAAATGATATCCTGGATT
ACAAGGATGACGACGATAAGGTTTAA

Protein Sequence: >RC201466 protein sequence
Red=Cloning site Green=Tags(s)
MEEDQELERKISGLKTSMAEGERKTALEMVQAAGTDRHCVTFVLHEEDHTLGNLSRYMIMKNPEVEFCGY
TTTHPSESKINLRIQTRGTLPAVEPFQRLNELMNVQHVLDKFEASIKDYKDQKASRNESTF

TRTRPLEQKLISEEDLAANDILDYKDDDDKV

Chromatograms: https://cdn.origene.com/chromatograms/mk6301_b07.zip

Restriction Sites: SgfI-MluI



[View online »](#)

Cloning Scheme:


ACCN: NM_015972

ORF Size: 399 bp

OTI Disclaimer: The molecular sequence of this clone aligns with the gene accession number as a point of reference only. However, individual transcript sequences of the same gene can differ through naturally occurring variations (e.g. polymorphisms), each with its own valid existence. This clone is substantially in agreement with the reference, but a complete review of all prevailing variants is recommended prior to use. [More info](#)

OTI Annotation: This clone was engineered to express the complete ORF with an expression tag. Expression varies depending on the nature of the gene.

Components: The ORF clone is ion-exchange column purified and shipped in a 2D barcoded Matrix tube containing 10ug of transfection-ready, dried plasmid DNA (reconstitute with 100 ul of water).

Reconstitution Method:

1. Centrifuge at 5,000xg for 5min.
2. Carefully open the tube and add 100ul of sterile water to dissolve the DNA.
3. Close the tube and incubate for 10 minutes at room temperature.
4. Briefly vortex the tube and then do a quick spin (less than 5000xg) to concentrate the liquid at the bottom.
5. Store the suspended plasmid at -20°C. The DNA is stable for at least one year from date of shipping when stored at -20°C.

RefSeq: [NM_015972.4](#)

RefSeq Size: 817 bp

RefSeq ORF: 402 bp

Locus ID: 51082

UniProt ID: [P0DPB6](#)

Cytogenetics: 13q12.2

Domains: RNA_pol_L

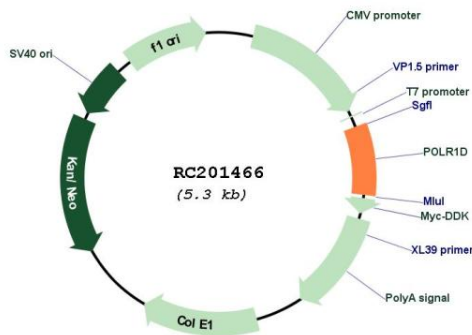
Protein Families: Stem cell - Pluripotency, Transcription Factors

Protein Pathways: Cytosolic DNA-sensing pathway, Metabolic pathways, Purine metabolism, Pyrimidine metabolism, RNA polymerase

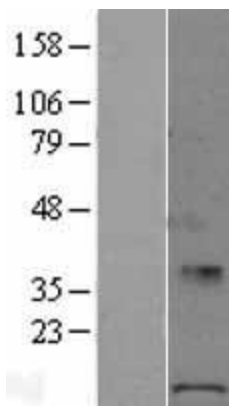
MW: 15.2 kDa

Gene Summary: The protein encoded by this gene is a component of the RNA polymerase I and RNA polymerase III complexes, which function in the synthesis of ribosomal RNA precursors and small RNAs, respectively. Mutations in this gene are a cause of Treacher Collins syndrome (TCS), a craniofacial development disorder. Alternative splicing results in multiple transcript variants. [provided by RefSeq, Apr 2011]

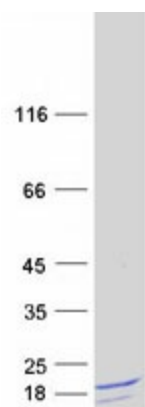
Product images:



Circular map for RC201466



Western blot validation of overexpression lysate (Cat# [LY414277]) using anti-DDK antibody (Cat# [TA50011-100]). Left: Cell lysates from untransfected HEK293T cells; Right: Cell lysates from HEK293T cells transfected with RC201466 using transfection reagent MegaTran 2.0 (Cat# [TT210002]).



Coomassie blue staining of purified POLR1D protein (Cat# [TP301466]). The protein was produced from HEK293T cells transfected with POLR1D cDNA clone (Cat# RC201466) using MegaTran 2.0 (Cat# [TT210002]).