

Product datasheet for **RC201464**

RAB10 (NM_016131) Human Tagged ORF Clone

Product data:

Product Type: Expression Plasmids

Tag: Myc-DDK

Symbol: RAB10

Mammalian Cell Selection: Neomycin

Vector: pCMV6-Entry (PS100001)

E. coli Selection: Kanamycin (25 ug/mL)

ORF Nucleotide Sequence: >RC201464 ORF sequence
Red=Cloning site Blue=ORF Green=Tags(s)

TTTGTAAATACGACTCACTATAGGGCGGCCGGAATTCGTCGACTGGATCCGGTACCGAGGAGATCTGCC
GCC**CGATCGCC**

ATGGCGAAGAAGACGTACGACCTGCTTTTCAAGCTGCTCCTGATCGGGGATTCGGAGTGGGAAGACCT
GCGTCCTTTTTCGTTTTTCGGATGATGCCTTCAATACTACCTTTATTTCCACCATAGGAATAGACTTCAA
GATCAAAACAGTTGAATTACAAGGAAAGAAGATCAAGCTACAGATATGGGATACAGCAGGCCAGGAGCGA
TTTCACACCATCACAACTCCTACTACAGAGGCGCAATGGGTATCATGCTAGTATATGACATACCAATG
GTAAAAGTTTTGAAAACATCAGCAAATGGCTTAGAAACATAGATGAGCATGCCAATGAAGATGTGGAAAG
AATGTTACTAGGAAACAAGTGTGATATGGACGACAAAAGAGTTGTACCTAAAGGAAAAGGAGAACAGATT
GCAAGGGAGCATGGTATTAGGTTTTTGTAGACTAGTGCAAAAGCAAAATATAAACATCGAAAAGGCGTTCC
TCACGTTAGCTGAAGATATCCTTCGAAAGACCCCTGTAAAAGAGCCCAACAGTGAAGATGTAGATATCAG
CAGTGGAGGAGGCGTGACAGGCTGGAAGAGCAAATGCTGC

ACGCGTACGCGGCCGCTCGAGCAGAACTCATCTCAGAAGAGGATCTGGCAGCAAATGATATCCTGGATT
ACAAGGATGACGACGATAAGGTTTAA

Protein Sequence: >RC201464 protein sequence
Red=Cloning site Green=Tags(s)

MAKKTYDLLFKLLIGDSGVGKTCVLFRRSDDAFNTTFISTIGIDFKIKTVELQGKKIKLQIWDTAGQER
FHTITTSYYRGAMGIMLVYDITNGKSFENISKWLRNIDEHANEDVERMLLGKCDMDKRVVPKGKGEQI
AREHGIRFFETSAKANINIEKAFLTLAEDILRKTPVKEPNSENVDISSGGVGTGWKSKCC

TRTRPLEQKLISEEDLAANDILDYKDDDDKV

Chromatograms: https://cdn.origene.com/chromatograms/mk6301_h07.zip

Restriction Sites: SgfI-MluI



[View online »](#)

Cloning Scheme:


ACCN: NM_016131

ORF Size: 600 bp

OTI Disclaimer: The molecular sequence of this clone aligns with the gene accession number as a point of reference only. However, individual transcript sequences of the same gene can differ through naturally occurring variations (e.g. polymorphisms), each with its own valid existence. This clone is substantially in agreement with the reference, but a complete review of all prevailing variants is recommended prior to use. [More info](#)

OTI Annotation: This clone was engineered to express the complete ORF with an expression tag. Expression varies depending on the nature of the gene.

Components: The ORF clone is ion-exchange column purified and shipped in a 2D barcoded Matrix tube containing 10ug of transfection-ready, dried plasmid DNA (reconstitute with 100 ul of water).

Reconstitution Method:

1. Centrifuge at 5,000xg for 5min.
2. Carefully open the tube and add 100ul of sterile water to dissolve the DNA.
3. Close the tube and incubate for 10 minutes at room temperature.
4. Briefly vortex the tube and then do a quick spin (less than 5000xg) to concentrate the liquid at the bottom.
5. Store the suspended plasmid at -20°C. The DNA is stable for at least one year from date of shipping when stored at -20°C.

Note: Plasmids are not sterile. For experiments where strict sterility is required, filtration with 0.22um filter is required.

RefSeq: [NM_016131.5](#)

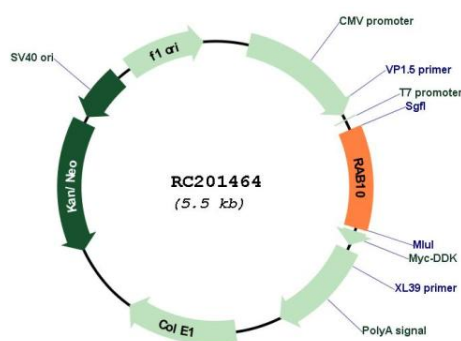
RefSeq Size: 3785 bp

RefSeq ORF: 603 bp

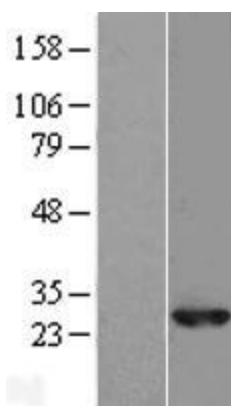
Locus ID: 10890

UniProt ID:	P61026
Cytogenetics:	2p23.3
Domains:	ras, RAN, RAS, RHO, RAB
Protein Families:	Druggable Genome
MW:	22.5 kDa
Gene Summary:	RAB10 belongs to the RAS (see HRAS; MIM 190020) superfamily of small GTPases. RAB proteins localize to exocytic and endocytic compartments and regulate intracellular vesicle trafficking (Bao et al., 1998 [PubMed 9918381]).[supplied by OMIM, Mar 2009]

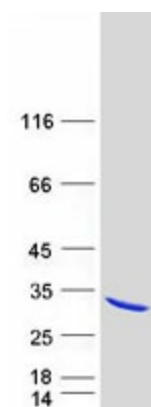
Product images:



Circular map for RC201464



Western blot validation of overexpression lysate (Cat# [LY414160]) using anti-DDK antibody (Cat# [TA50011-100]). Left: Cell lysates from untransfected HEK293T cells; Right: Cell lysates from HEK293T cells transfected with RC201464 using transfection reagent MegaTran 2.0 (Cat# [TT210002]).



Coomassie blue staining of purified RAB10 protein (Cat# [TP301464]). The protein was produced from HEK293T cells transfected with RAB10 cDNA clone (Cat# RC201464) using MegaTran 2.0 (Cat# [TT210002]).