

Product datasheet for RC201454L1

RASD2 (NM_014310) Human Tagged Lenti ORF Clone

Product data:

Product Type:	Expression Plasmids
Product Name:	RASD2 (NM_014310) Human Tagged Lenti ORF Clone
Tag:	Myc-DDK
Symbol:	RASD2
Synonyms:	Rhes; TEM2
Mammalian Cell Selection:	None
Vector:	pLenti-C-Myc-DDK (PS100064)
E. coli Selection:	Chloramphenicol (34 ug/mL)
ORF Nucleotide Sequence:	The ORF insert of this clone is exactly the same as(RC201454).
Restriction Sites:	SgfI-MluI
Cloning Scheme:	

Cloning sites used for ORF Shuttling:



* The last codon before the Stop codon of the ORF.

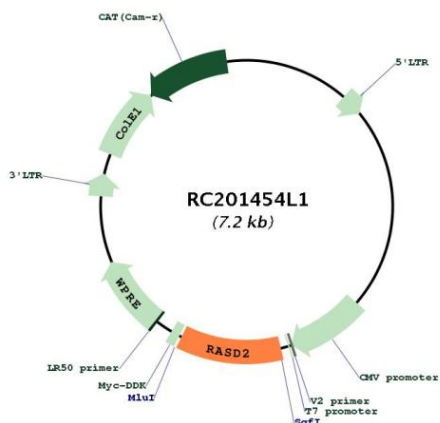
ACCN:	NM_014310
ORF Size:	798 bp



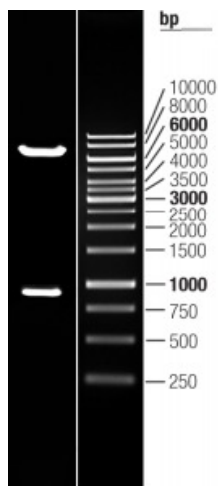
[View online »](#)

OTI Disclaimer:	The molecular sequence of this clone aligns with the gene accession number as a point of reference only. However, individual transcript sequences of the same gene can differ through naturally occurring variations (e.g. polymorphisms), each with its own valid existence. This clone is substantially in agreement with the reference, but a complete review of all prevailing variants is recommended prior to use. More info
OTI Annotation:	This clone was engineered to express the complete ORF with an expression tag. Expression varies depending on the nature of the gene.
Components:	The ORF clone is ion-exchange column purified and shipped in a 2D barcoded Matrix tube containing 10ug of transfection-ready, dried plasmid DNA (reconstitute with 100 ul of water).
Reconstitution Method:	<ol style="list-style-type: none">1. Centrifuge at 5,000xg for 5min.2. Carefully open the tube and add 100ul of sterile water to dissolve the DNA.3. Close the tube and incubate for 10 minutes at room temperature.4. Briefly vortex the tube and then do a quick spin (less than 5000xg) to concentrate the liquid at the bottom.5. Store the suspended plasmid at -20°C. The DNA is stable for at least one year from date of shipping when stored at -20°C.
RefSeq:	NM_014310.3
RefSeq Size:	3047 bp
RefSeq ORF:	801 bp
Locus ID:	23551
UniProt ID:	Q96D21
Cytogenetics:	22q12.3
Domains:	ras, RAN, RAS, RHO, RAB
Protein Families:	Druggable Genome
MW:	30.4 kDa
Gene Summary:	This gene belongs to the Ras superfamily of small GTPases and is enriched in the striatum. The encoded protein functions as an E3 ligase for attachment of small ubiquitin-like modifier (SUMO). This protein also binds to mutant huntingtin (mHtt), the protein mutated in Huntington disease (HD). Sumoylation of mHTT by this protein may cause degeneration of the striatum. The protein functions as an activator of mechanistic target of rapamycin 1 (mTOR1), which in turn plays a role in myelination, axon growth and regeneration. Reduced levels of mRNA expressed by this gene were found in HD patients. [provided by RefSeq, Jan 2016]

Product images:



Circular map for RC201454L1



Double digestion of RC201454L1 using SgfI and MluI