

## Product datasheet for RC201450

### SAR1 (SAR1A) (NM\_020150) Human Tagged ORF Clone

#### Product data:

**Product Type:** Expression Plasmids  
**Product Name:** SAR1 (SAR1A) (NM\_020150) Human Tagged ORF Clone  
**Tag:** Myc-DDK  
**Symbol:** SAR1  
**Synonyms:** masra2; SAR1; Sara; SARA1  
**Mammalian Cell Selection:** Neomycin  
**Vector:** pCMV6-Entry (PS100001)  
**E. coli Selection:** Kanamycin (25 ug/mL)  
**ORF Nucleotide Sequence:** >RC201450 ORF sequence  
Red=Cloning site Blue=ORF Green=Tags(s)

TTTTGTAATACGACTCACTATAGGGCGGCCGGAATTCGTCGACTGGATCCGGTACCGAGGAGATCTGCC  
GCC**CGATCGCC**

ATGTCTTTCATCTTTGAGTGGATCTACAATGGCTTCAGCAGTGTGCTCCAGTTCTTAGGACTGTACAAGA  
AATCTGGAAAACCTGTATTCTTAGGTTGGATAATGCAGGCAAACCACTCTTCTCACATGCTCAAAGA  
TGACAGATTGGCCAACATGTTCCAACACTACATCCGACATCAGAAGAGCTAACAATTGCTGGAATGACC  
TTTACAACCTTTGATCTTGGTGGCAGCAGCAAGCACGTCGCGTTTGGAAAAATTATCTCCAGCAATTA  
ATGGGATTGTCTTCTGGTGGACTGTGCAGATCATTCTCGCTCGTGAATCCAAAGTTGAGCTTAATGC  
TTTAATGACTGATGAAACAATATCCAATGTGCCAATCCTTATCTTGGGTAACAAAATTGACAGAACAGAT  
GCAATCAGTGAAGAAAACTCCGTGAGATATTTGGGCTTATGGACAGACCACAGGAAAGGGGAATGTGA  
CCCTGAAGGAGCTGAATGCTCGCCCCATGGAAGTGTTTCATGTGCAGTGTGCTCAAGAGGCAAGGTTACGG  
CGAGGGTTTCCGCTGGCTCTCCAGTATATTGAC

**ACGCGT**ACGCGGCCGCTCGAGCAGAACTCATCTCAGAAGAGGATCTGGCAGCAATGATATCCTGGATT  
ACAAGGATGACGACGATAAGGTTTAA

**Protein Sequence:** >RC201450 protein sequence  
Red=Cloning site Green=Tags(s)

MSFIFEWIYNGFSSVLQFLGLYKSGKLVFLGLDNAGKTTLLHMLKDDRLGQHVPTLHPTSEELTIAGMT  
FTTFDLGGHEQARRVWKNYLPAINGI VFLVDCADHSRLVESKVELNALMTDETISNVPILILGNKIDRTD  
AISEEKLEIFGLYGQTTGKGNVTLKELNARPMVEVFMCSVLKRQGYGEGFRWLSQYID

**TRTRPLEQKLI**SEEDLAANDILDYKDDDDKV



[View online »](#)

**Chromatograms:** [https://cdn.origene.com/chromatograms/mk6084\\_a06.zip](https://cdn.origene.com/chromatograms/mk6084_a06.zip)

**Restriction Sites:** SgfI-MluI

**Cloning Scheme:**



**ACCN:** NM\_020150

**ORF Size:** 594 bp

**OTI Disclaimer:** The molecular sequence of this clone aligns with the gene accession number as a point of reference only. However, individual transcript sequences of the same gene can differ through naturally occurring variations (e.g. polymorphisms), each with its own valid existence. This clone is substantially in agreement with the reference, but a complete review of all prevailing variants is recommended prior to use. [More info](#)

**OTI Annotation:** This clone was engineered to express the complete ORF with an expression tag. Expression varies depending on the nature of the gene.

**Components:** The ORF clone is ion-exchange column purified and shipped in a 2D barcoded Matrix tube containing 10ug of transfection-ready, dried plasmid DNA (reconstitute with 100 ul of water).

**Reconstitution Method:**

1. Centrifuge at 5,000xg for 5min.
2. Carefully open the tube and add 100ul of sterile water to dissolve the DNA.
3. Close the tube and incubate for 10 minutes at room temperature.
4. Briefly vortex the tube and then do a quick spin (less than 5000xg) to concentrate the liquid at the bottom.
5. Store the suspended plasmid at -20°C. The DNA is stable for at least one year from date of shipping when stored at -20°C.

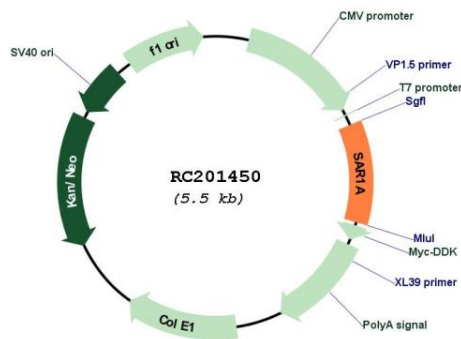
**Note:** Plasmids are not sterile. For experiments where strict sterility is required, filtration with 0.22um filter is required.

**RefSeq:** [NM\\_020150.5](#)

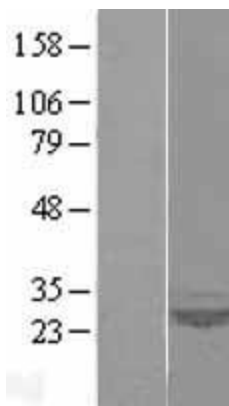
**RefSeq Size:** 3018 bp

RefSeq ORF:	597 bp
Locus ID:	56681
UniProt ID:	<a href="#">Q9NR31</a>
Cytogenetics:	10q22.1
Domains:	SAR, ARF, arf
MW:	22.4 kDa
Gene Summary:	Involved in transport from the endoplasmic reticulum to the Golgi apparatus (By similarity). Required to maintain SEC16A localization at discrete locations on the ER membrane perhaps by preventing its dissociation. SAR1A-GTP-dependent assembly of SEC16A on the ER membrane forms an organized scaffold defining endoplasmic reticulum exit sites (ERES). [UniProtKB/Swiss-Prot Function]

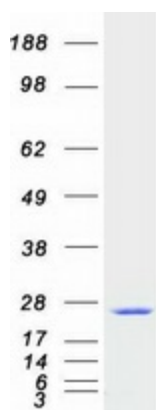
### Product images:



Circular map for RC201450



Western blot validation of overexpression lysate (Cat# [LY428231]) using anti-DDK antibody (Cat# [TA50011-100]). Left: Cell lysates from untransfected HEK293T cells; Right: Cell lysates from HEK293T cells transfected with [RC226577] using transfection reagent MegaTran 2.0 (Cat# [TT210002]).



Coomassie blue staining of purified SAR1A protein (Cat# [TP301450]). The protein was produced from HEK293T cells transfected with SAR1A cDNA clone (Cat# RC201450) using MegaTran 2.0 (Cat# [TT210002]).