

Product datasheet for **RC201447**

RILPL2 (NM_145058) Human Tagged ORF Clone

Product data:

Product Type:	Expression Plasmids
Product Name:	RILPL2 (NM_145058) Human Tagged ORF Clone
Tag:	Myc-DDK
Symbol:	RILPL2
Synonyms:	RLP2
Mammalian Cell Selection:	Neomycin
Vector:	pCMV6-Entry (PS100001)
E. coli Selection:	Kanamycin (25 ug/mL)
ORF Nucleotide Sequence:	>RC201447 ORF sequence Red=Cloning site Blue=ORF Green=Tags(s)

TTTTGTAATACGACTCACTATAGGGCGCCGGGAATTCGTCGACTGGATCCGGTACCGAGGAGATCTGCC
GCC**CGATCGCC**

ATGGAGGAGCCCCCTGTGCGAGAAGAGGAAGAGGAGGAGGGAGAGGAGGACGAGGAGAGGGACGAGGTTG
GGCCCCGAGGGGGCGTGGCAAGAGCCCCCTCCAGCTGACCGCCGAGGACGTGTATGACATCTCCTACCT
GTTGGGCCGCGAGCTTATGGCCCTGGGCAGCGACCCCCGGGTGACGCAGCTGCAGTTCAAAGTCGTCCGC
GTCCTGGAGATGCTGGAGGCGCTGGTGAATGAGGGCAGCCTGGCGCTGGAGGAGCTGAAGATGGAGAGGG
ACCACCTCAGGAAGGAGGTGGAGGGCTGCGGAGACAGAGCCCTCCGGCCAGCGGGGAGGTGAACCTGGG
CCCAAACAAAATGGTGGTTGACCTGACAGATCCCAACCGACCCCGCTTCACTCTGCAGGAGCTAAGGGAT
GTGCTGCAGGAACGCAACAACTCAAGTCGCAGCTCCTGGTGGTGCAGGAAGAGCTGCAGTGCTACAAGA
GTGGCCTGATTCCACCAAGAGAAGGCCAGGAGGAAGAAGAGAAAAAGATGCTGTGGTTACTAGTGCCAA
AAATGCTGGCAGGAACAAGGAGGAGAAGACAATCATAAAAAGCTGTTCTTTTTTCGATCGGGGAAACAG
ACC

ACGCGTACGCGGGCGCTCGAGCAGAACTCATCTCAGAAGAGGATCTGGCAGCAATGATATCCTGGATT
ACAAGGATGACGACGATAAGGTTTAA



[View online »](#)

Reconstitution Method:

1. Centrifuge at 5,000xg for 5min.
2. Carefully open the tube and add 100ul of sterile water to dissolve the DNA.
3. Close the tube and incubate for 10 minutes at room temperature.
4. Briefly vortex the tube and then do a quick spin (less than 5000xg) to concentrate the liquid at the bottom.
5. Store the suspended plasmid at -20°C. The DNA is stable for at least one year from date of shipping when stored at -20°C.

RefSeq: [NM_145058.2](#)

RefSeq Size: 1435 bp

RefSeq ORF: 636 bp

Locus ID: 196383

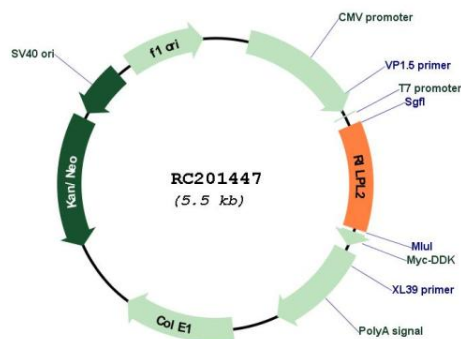
UniProt ID: [Q969X0](#)

Cytogenetics: 12q24.31

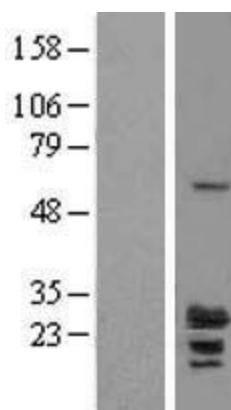
MW: 24 kDa

Gene Summary: This gene encodes a protein that contains a rab-interacting lysosomal protein-like domain. This protein may be involved in regulating lysosome morphology. This protein may also be a target for the Hepatitis C virus and assist in viral replication. Alternate splicing results in multiple transcript variants. [provided by RefSeq, Jan 2015]

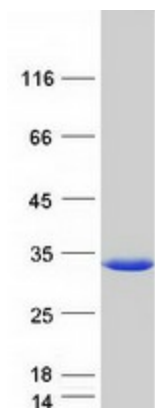
Product images:



Circular map for RC201447



Western blot validation of overexpression lysate (Cat# [LY408055]) using anti-DDK antibody (Cat# [TA50011-100]). Left: Cell lysates from untransfected HEK293T cells; Right: Cell lysates from HEK293T cells transfected with RC201447 using transfection reagent MegaTran 2.0 (Cat# [TT210002]).



Coomassie blue staining of purified RILPL2 protein (Cat# [TP301447]). The protein was produced from HEK293T cells transfected with RILPL2 cDNA clone (Cat# RC201447) using MegaTran 2.0 (Cat# [TT210002]).