

Product datasheet for RC201446

UBA1 (NM_003334) Human Tagged ORF Clone

Product data:

Product Type:	Expression Plasmids
Product Name:	UBA1 (NM_003334) Human Tagged ORF Clone
Tag:	Myc-DDK
Symbol:	UBA1
Synonyms:	A1S9; A1S9T; A1ST; AMCX1; CFAP124; GXP1; POC20; SMAX2; UBA1A; UBE1; UBE1X; VEXAS
Mammalian Cell Selection:	Neomycin
Vector:	pCMV6-Entry (PS100001)
E. coli Selection:	Kanamycin (25 ug/mL)
ORF Nucleotide Sequence:	>RC201446 ORF sequence Red=Cloning site Blue=ORF Green=Tags(s)

TTTTGTAATACGACTCACTATAGGGCGGCCGGAATTCGTCGACTGGATCCGGTACCGAGGAGATCTGCC
GCC**CGATCGCC**

ATGTCCAGCTCGCCGCTGTCCAAGAAACGTGCGGTGTCCGGCCCTGATCCAAAGCCGGTTCTAACTGCT
CCCCTGCCAGTCCGTGTTGTCCGAAGTGCCTCGGTGCCAACCAACGGAATGGCCAAGAACGGCAGTGA
AGCAGACATAGACGAGGGCCTTTACTCCCGCAGCTGTATGTGTTGGCCATGAGGCAATGAAGCGGCTC
CAGACATCCAGTGTCTGGTATCAGGCCTGCGGGCCTGGGCGTGGAGATCGCTAAGAACATCATCCTTG
GTGGGTCAAGGCTGTTACCCTACATGACCAGGGCACTGCCAGTGGGCTGATCTTCTCCAGTTCTA
CCTGCGGGAGGAGACATCGGTAAAAACCGGGCCGAGGTATCACAGCCCCGCTCGCTGAGCTCAACAGC
TATGTGCCTGTCCTGCTACACTGGACCCCTCGTTGAGGACTTCCTTAGTGGTTCCAGGTGGTGGTGC
TCACCAACACCCCTGGAGGACCAGCTGCGAGTGGGTGAGTTCTGTACAAACCGTGGCATCAAGCTGGT
GGTGGCAGACACGCGGGCCTGTTGGGAGCTTCTGTGACTTTGGAGAGGAAATGATCCTCACAGAT
TCCAATGGGGAGCAGCCACTCAGTGCTATGGTTCTATGGTTACCAAGGACAACCCCGGTGTGGTTACCT
GCCTGGATGAGGCCGACACGGGTTTGAGAGCGGGGACTTTGTCTCCTTTTCAGAAGTACAGGGCATGGT
TGAACCTCAACGAAATCAGCCCATGGAGATCAAAGTCTGGGTCTTATACCTTTAGCATCTGTGACACC
TCCAACCTCCGACTACATCCGTGGAGGCATCGTCAGTCAGTCAAAGTACCTAAGAAGATTAGCTTTA
AATCCTTGGTGGCCTCACTGGCAGAACCTGACTTTGTGGTGACGGACTTCGCAAGTTTTCTCGCCCTGC
CCAGCTGCACATTGGCTCCAGGCCCTGCACAGTTCTGTGCTCAGCATGGCCGGCCACCTCGGCCCCGC
AATGAGGAGGATGCAGCAGAAGTGGTAGCCTTAGCACAGGCTGTGAATGCTCGAGCCCTGCCAGCAGTGC
AGCAAAAATAACCTGGACGAGGACCTCATCCGGAAGCTGGCATAGTGGCTGCTGGGGATCTGGCACCCAT
AAACGCCCTTATTGGGGCCTGGCTGCCAGGAAGTCATGAAGGCCTGCTCCGGGAAGTTTCATGCCATC
ATGCAGTGGCTATACTTTGATGCCCTTGAGTGTCTCCCTGAGGACAAAGAGGTCTCACAGAGGACAAGT
GCCTCCAGCGCCAGAACCCTTATGACGGGCAAGTGGCTGTGTTTGGCTCAGACCTGCAAGAGAAGCTGGG
CAAGCAGAAGTATTTCTGGTGGTGGGGGCCATTGGCTGTGAGCTGCTCAAGAACTTGGCATGATT



[View online »](#)

```
GGGCTGGGCTGCGGGGAGGGTGGAGAAATCATCGTTACAGACATGGACACCATTGAGAAGTCAAATCTGA
ATCGACAGTTTCTTTCCGGCCCTGGGATGTCACGAAGTTAAAGTCTGACACGGCTGCTGCAGCTGTGCG
CCAAATGAATCCACATATCCGGGTGACAAGCCACCAGAACCGTGTGGTCTGACACGGAGCGCATCTAT
GATGACGATTTTTTCCAAAACCTAGATGGCGTGGCCAATGCCCTGGACAACGTGGATGCCCGCATGTACA
TGGACCGCCGCTGTGTCTACTACCGGAAGCCACTGCTGGAGTCAAGCACACTGGGCACCAAAAGGCAATGT
GCAGGTGGTATCCCCTTCTGACAGAGTCGTACAGTTCCAGCCAGGACCACCTGAGAAGTCCATCCCC
ATCTGTACCTGAAGAACTTCCCTAATGCCATCGAGCACACCCTGCAGTGGGCTCGGGATGAGTTTGAAG
GCCTCTTCAAGCAGCCAGCAGAAAATGTCAACCAGTACCTCACAGACCCCAAGTTTGTGGAGCGAACACT
GCGGCTGGCAGGCACTCAGCCCTTGGAGGTGCTGGAGGCTGTGCAGCGCAGCCTGGTGTGCAGCGACCA
CAGACCTGGGCTGACTGCGTGACCTGGGCTGCCACCACTGGCACACCCAGTACTCGAACACATCCGGC
AGCTGTGCACAACCTCCCTCCTGACCAGCTCACAAGCTCAGGAGCGCCGTTCTGGTCTGGGCCAAAACG
CTGTCCACACCCGCTCACCTTGTGATGTCAACAATCCCCTGCATCTGGACTATGTGATGGCTGTGCCAAC
CTGTTTGGCCAGACCTACGGGCTGACAGGCTCTCAGGACCAGCTGCTGTGGCCACATTCCTGCAGTCTG
TGCAGTCCCCGAATCACCCCAAGTCTGGCGTCAAGATCCATGTTTCTGACCAGGAGCTGCAGAGCGC
CAATGCCTCTGTTGATGACAGTCGTCTAGAGGAGCTCAAAGCCACTCTGCCAGCCAGACAAGCTCCCT
GGATTCAGATGTACCCATTGACTTTGAGAAGGATGATGACAGCAACTTTCATATGGATTCATCGTGG
CTGCATCCAACCTCCGGGCAGAAAATATGACATTCCTTCTGCAGACCGGCACAAGAGCAAGCTGATTGC
AGGGAAGATCATCCCAGCCATTGCCACGACCACAGCAGCCGTGGTTGGCCTTGTGTGTCTGGAGCTGTAC
AAGTTTGTGCAGGGGCACCGACAGCTTGACTCCTACAAGAATGGTTTCTCAACTGGCCCTGCCTTTCT
TTGGTTTCTCTGAACCCCTTGGCGACCCAGCTCACCAGTACTATAACCAAGAGTGGACATTGTGGGATCG
CTTTGAGGTACAAGGGCTGCAGCCTAATGGTGAGGAGTAGCCCTCAAACAGTTCCTCGACTATTTAAG
ACAGAGCACAATTAGAGATCACCATGCTGTCCAGGGCGTCCATGCTCTATTCCTTCTCATGCCAG
CTGCCAAGCTCAAGGAACGGTTGGATCAGCCGATGACAGAGATTGTGAGCCGTGTGTCGAAGCGAAAAGT
GGGCCCGCACGTGCGGGCGCTGGTCTGAGCTGTGCTGTAAACGACGAGAGCGGGCAGGATGTGAGGTT
CCCTATGTCCGATACACCATCCGC
```

ACGCGTACGCGGCCGCTCGAGCAGAAACTCATCTCAGAAGAGGATCTGGCAGCAAATGATATCCTGGATT
ACAAGGATGACGACGATAAGGTTTAA

Protein Sequence:

>RC201446 protein sequence
Red=Cloning site **Green**=Tags(s)

```
MSSSPLSKRRVSGPDPKPGSNCSPAQSVLSEVPSVPTNGMAKNGSEADIDEGLYSRQLYVLGHEAMKRL
QTSSVLSGLRGLGVEIAKNIILGGVKAVTLHDQGTAWADLSSQFYLREEDIGKNRAEVSQPRLAELNS
YVPVTAYTGPLVEDFLSGFQVVVL TNTPLEDQLRVGEFCHNRGIKLVVADTRGLFGQLFCDFGEEMILTD
SNGEQPLSAMVSMVTKDNPVVTCLDEARHGFESGDFVSFSEVQGMVELNGNQPMIEKVLGPYTFSDT
SNFSDYIRGGIVSQVKVPKKISFKSLVASLAEPDFVVTDFAKFSRPAQLHIGFQALHQFCAQHGRPPRPR
NEEDAELVALAQAVNARALPAVQNNLDEDLIRKLAYVAAGDLAPINAFIGGLAAQEVKACSGKFMPI
MQWLYFDAL ECLPEDKEVLTEDKCLRQNRDQVAVFGSDLQEKLGKQYFLVGAGAIGCELLKNFAMI
GLGCGEGGEIIVTDMDTIEKSNLNRQFLFRPVDVTKLKSDTAAAAVRQMNPHIRVTS HQNRVGPDIERY
DDDFQNL DGVANALDNVDARMYMDRRCVYYRKPLLESGTLGKGNVQVVIPFLTESYSSSQDPPEKSIP
ICTLKNFPNAIEHTLQWARDEFELFKQPAENVNQYL TDPKFVERTLRLAGTQPLEVLEAVQRSLVLQRP
QTWADCVTWACHHWHYQYSNNIRQLLHNFPPDQLTSSGAPFWSGPKRCPHPLTFD VNNPLHLDYVMAAAN
LFAQTYGLTGSQDRAAVATFLQSVQVPEFTPKSGVKIHVSDQELQSANASVDDSRLEELKATLPSDKLP
GFKMYPIDFEKDDSNFHMDFIVAASNLAENYDIP SADRHKSKLIAGKIIPAIATTTAAVVGLVCLELY
KVVQGHRQLDSYKNGFLNLALPFFGFSEPLAAPRHQYNNQEWTLWDRFEVQGLQPNGEEMTLKQFLDYFK
TEHKLEITMLSQGVSMLYSFFMPAAKLERLDQPMTEIIVSRVSKRKLGRHVRLVLELCCNDESGEDVEV
PYVRYTIR
```

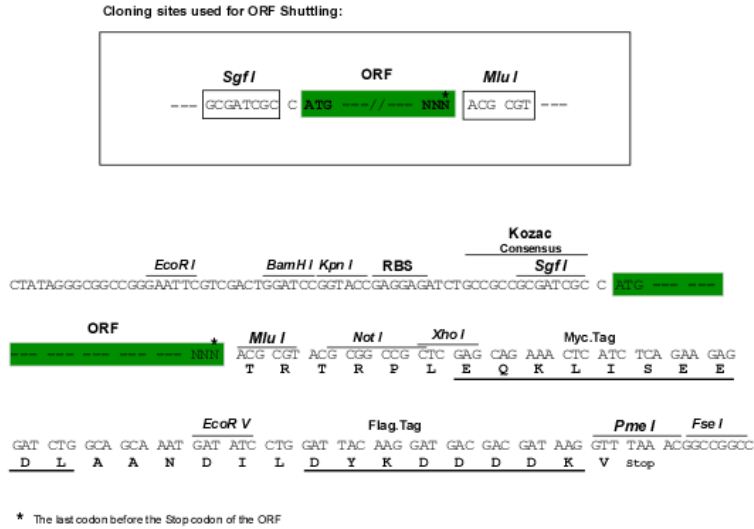
TRTRPLEQKLISEEDLAANDILDYKDDDDKV

Chromatograms:

https://cdn.origene.com/chromatograms/mk6256_d06.zip

Restriction Sites: SgfI-MluI

Cloning Scheme:



ACCN: NM_003334

ORF Size: 3174 bp

OTI Disclaimer: The molecular sequence of this clone aligns with the gene accession number as a point of reference only. However, individual transcript sequences of the same gene can differ through naturally occurring variations (e.g. polymorphisms), each with its own valid existence. This clone is substantially in agreement with the reference, but a complete review of all prevailing variants is recommended prior to use. [More info](#)

OTI Annotation: This clone was engineered to express the complete ORF with an expression tag. Expression varies depending on the nature of the gene.

Components: The ORF clone is ion-exchange column purified and shipped in a 2D barcoded Matrix tube containing 10ug of transfection-ready, dried plasmid DNA (reconstitute with 100 ul of water).

Reconstitution Method:

1. Centrifuge at 5,000xg for 5min.
2. Carefully open the tube and add 100ul of sterile water to dissolve the DNA.
3. Close the tube and incubate for 10 minutes at room temperature.
4. Briefly vortex the tube and then do a quick spin (less than 5000xg) to concentrate the liquid at the bottom.
5. Store the suspended plasmid at -20°C. The DNA is stable for at least one year from date of shipping when stored at -20°C.

RefSeq: [NM_003334.4](#)

RefSeq Size: 3616 bp

RefSeq ORF: 3177 bp

Locus ID: 7317

UniProt ID: [P22314](#)

Cytogenetics: Xp11.3

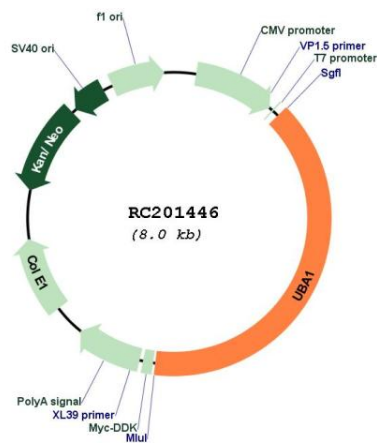
Domains: UBACT, ThiF

Protein Pathways: Parkinson's disease, Ubiquitin mediated proteolysis

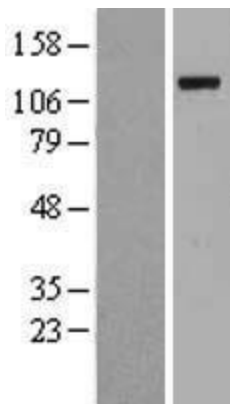
MW: 117.8 kDa

Gene Summary: The protein encoded by this gene catalyzes the first step in ubiquitin conjugation to mark cellular proteins for degradation. This gene complements an X-linked mouse temperature-sensitive defect in DNA synthesis, and thus may function in DNA repair. It is part of a gene cluster on chromosome Xp11.23. Alternatively spliced transcript variants that encode the same protein have been described. [provided by RefSeq, Jul 2008]

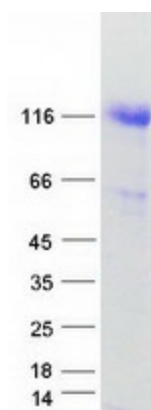
Product images:



Circular map for RC201446



Western blot validation of overexpression lysate (Cat# [LY418752]) using anti-DDK antibody (Cat# [TA50011-100]). Left: Cell lysates from untransfected HEK293T cells; Right: Cell lysates from HEK293T cells transfected with RC201446 using transfection reagent MegaTran 2.0 (Cat# [TT210002]).



Coomassie blue staining of purified UBA1 protein (Cat# [TP301446]). The protein was produced from HEK293T cells transfected with UBA1 cDNA clone (Cat# RC201446) using MegaTran 2.0 (Cat# [TT210002]).