

Product datasheet for RC201442

PARL (NM_001037639) Human Tagged ORF Clone

Product data:

Product Type:	Expression Plasmids
Product Name:	PARL (NM_001037639) Human Tagged ORF Clone
Tag:	Myc-DDK
Symbol:	PARL
Synonyms:	PRO2207; PSARL; PSARL1; PSENIP2; RHBDS1
Mammalian Cell Selection:	Neomycin
Vector:	pCMV6-Entry (PS100001)
E. coli Selection:	Kanamycin (25 ug/mL)
ORF Nucleotide Sequence:	>RC201442 ORF sequence Red=Cloning site Blue=ORF Green=Tags(s)

TTTTGTAATACGACTCACTATAGGGCGGCCGGAATTCGTCGACTGGATCCGGTACCGAGGAGATCTGCC
GCC**CGATCGCC**

ATGGCGTGGCGAGGCTGGGCGCAGAGAGGCTGGGGCTGCGGCCAGGCGTGGGGTGCCTGGTGGCGGCC
GCAGCTGCGAGGAGCTCACTGCGGTCCTAACCCCGCCGAGCTCCTCGGACGCAGGTTAACTTCTTTAT
TCAACAAAATGCGGATTCAGAAAAGCACCCAGGAAGTTGAACCTCGAAGATCAGACCCAGGGACAAGT
GGTGAAGCATAACAAGAGAAGTGCTTTGATTCTCCTGTGGAAGAAACAGTCTTTTATCCTTCTCCATC
CTATAAGGAGTCTCATAAACCTTTATTTTTACTGTTGGGTTACAGGCTGTGCATTTGGATCAGCTGC
TATTTGGCAATATGAATCACTGAAATCCAGGGTCCAGAGTATTTTGATGGTATAAAAGCTGATTGGTTG
GATAGCATAAGACCACAAAAGAAGGAGACTTCAGAAAGGAGATTAACAAGTGGTGAATAACCTAAGTG
ATGGCCAGCGGACTGTGACAGGTATTATAGCTGCAAAATGTCTTGTATTCTGTTTATGGAGAGTACCTTC
TCTGCAGCGGACAATGATCAGATATTTACATCGAATCCAGCCTCAAGTGTATTTCCAATTTGTCAAGT
TACGTGGGTAAGTTGCCACAGGAAGATATGGACCATCACTTGGTGCATCTGGTGCCATCATGACAGTCC
TCGAGCTGTCTGCACTAAGATCCCAGAAGGGAGGCTTGCATTATTTTCCTTCCGATGTTACAGTTTAC
AGCAGGGAATGCCCTGAAAGCCATTATCGCCATGGATACAGCAGGAATGATCCTGGGATGGAAATTTTT
GATCATCGGCACATCTTGGGGAGCTCTTTTTGGAATATGGTATGTTACTTACGGTCATGAACTGATTT
GGAAGAACAGGGAGCCGCTAGTAAAATCTGGCATGAAATAAGGACTAATGGCCAAAAAAGGAGGTGG
CTCTAAG

ACGCGTACGCGGCCGCTCGAGCAGAACTCATCTCAGAAGAGGATCTGGCAGCAAATGATATCCTGGATT
ACAAGGATGACGACGATAAGGTTTAA



[View online »](#)

Protein Sequence: >RC201442 protein sequence
 Red=Cloning site Green=Tags(s)

MAWRGWAQRGWGCGQAWGASVGGRSCEELTAVLTPPQLLGRRFNFFIQQKCGFRKAPRKVEPRRSDPGTS
 GEAYKRSALIPPVEETVFYPSYPPIRSLIKPLFFTVGFTGCAFGSAAIWQYESLKSQVSYFDGIKADWL
 DSIRPQKEGDFRKEINKWNNLSDGQRTVTGIIAANLVFCLWRVPSLQRTMIRYFTSNPASSVISNFVS
 YVGKVATGRYGPSL GASGAIMTVLAAVCTKIPEGR LAIIFLPMFTFTAGNALKAIAMDTAGMILGWKFF
 DHA AHLGGALFGI WYV TYGHELIWKNREPLVKI WHEIR TNGPKKGGGSK

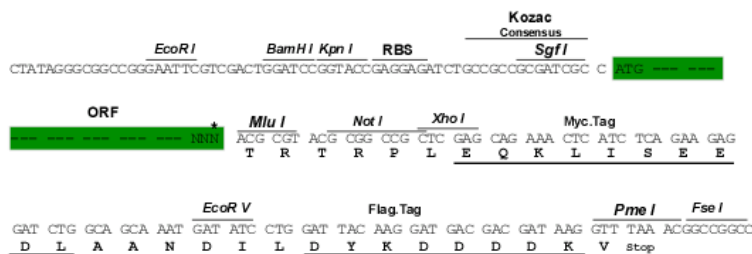
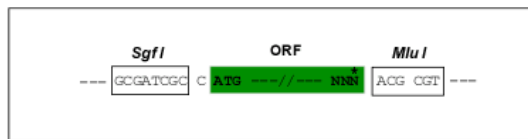
TRTRPLEQKLISEEDLAANDILDYKDDDDKVK

Chromatograms: https://cdn.origene.com/chromatograms/mk6403_h12.zip

Restriction Sites: SgfI-MluI

Cloning Scheme:

Cloning sites used for ORF Shuttling:



* The last codon before the Stop codon of the ORF

ACCN: NM_001037639

ORF Size: 987 bp

OTI Disclaimer: The molecular sequence of this clone aligns with the gene accession number as a point of reference only. However, individual transcript sequences of the same gene can differ through naturally occurring variations (e.g. polymorphisms), each with its own valid existence. This clone is substantially in agreement with the reference, but a complete review of all prevailing variants is recommended prior to use. [More info](#)

OTI Annotation: This clone was engineered to express the complete ORF with an expression tag. Expression varies depending on the nature of the gene.

Components: The ORF clone is ion-exchange column purified and shipped in a 2D barcoded Matrix tube containing 10ug of transfection-ready, dried plasmid DNA (reconstitute with 100 ul of water).

Reconstitution Method:

1. Centrifuge at 5,000xg for 5min.
2. Carefully open the tube and add 100ul of sterile water to dissolve the DNA.
3. Close the tube and incubate for 10 minutes at room temperature.
4. Briefly vortex the tube and then do a quick spin (less than 5000xg) to concentrate the liquid at the bottom.
5. Store the suspended plasmid at -20°C. The DNA is stable for at least one year from date of shipping when stored at -20°C.

RefSeq: [NM_001037639.3](#)

RefSeq Size: 1273 bp

RefSeq ORF: 990 bp

Locus ID: 55486

UniProt ID: [Q9H300](#)

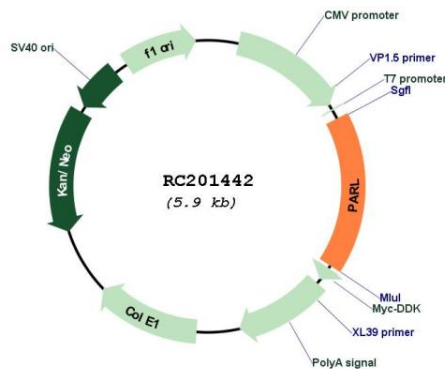
Cytogenetics: 3q27.1

Protein Families: Protease, Transmembrane

MW: 36.6 kDa

Gene Summary: This gene encodes a member of the rhomboid family of intramembrane serine proteases that is localized to the inner mitochondrial membrane. The encoded protein regulates mitochondrial remodeling and apoptosis through regulated substrate proteolysis. Proteolytic processing of the encoded protein results in the release of a small peptide, P-beta, which may transit to the nucleus. Mutations in this gene may be associated with Parkinson's disease. [provided by RefSeq, May 2016]

Product images:



Circular map for RC201442