

## Product datasheet for **RC201440**

### RNF183 (NM\_145051) Human Tagged ORF Clone

#### Product data:

Product Type: Expression Plasmids  
Product Name: RNF183 (NM\_145051) Human Tagged ORF Clone  
Tag: Myc-DDK  
Symbol: RNF183  
Mammalian Cell Selection: Neomycin  
Vector: pCMV6-Entry (PS100001)  
E. coli Selection: Kanamycin (25 ug/mL)  
ORF Nucleotide Sequence: >RC201440 ORF sequence  
Red=Cloning site Blue=ORF Green=Tags(s)

TTTTGTAATACGACTCACTATAGGGCGGCCGGAATTCGTCGACTGGATCCGGTACCGAGGAGATCTGCCGCC**CGCATCGCC**

ATGGCTGAGCAGCAGGGCCGGGAGCTTGAGGCTGAGTGCCCCGTCTGCTGGAACCCCTTCAACAACACGT  
TCCATACCCCCAAAATGCTGGATTGCTGCCACTCCTTCTGCGTGGAAATGCTGGCCACCTCAGCCTTGT  
GACTCCAGCCCGGCGCCGCTGCTGTGCCACTCTGTCCGACGCCACAGTGCTGGCCTCAGGGCAGCCT  
GTCACTGACTTGCCACGGACACTGCCATGCTCACCTGCTCCGCTGGAGCCCCACCATGTCATCCTGG  
AAGGCCATCAGCTGTGCCTCAAGGACCAGCCCAAGAGCCGCTACTTCTGCGCCAGCCTCGAGTCTACAC  
GCTGGACCTTGGCCCCCAGCCTGGGGCCAGACTGGGCCGCCAGACACGGCCTCTGCCACCGTGTCT  
ACGCCATCCTCATCCCCAGCCACCACTCTTTGAGGGAGTGTTCGCAACCCTCAGTTCGCATCTTTG  
CCTACCTGATGGCCGTCATCCTCAGTGTACTCTGTTGCTCATATTCTCCATCTTTGGACCAAGCAGTT  
CCTTTGGGGTGTGGGG

**ACGCGT**ACGCGGCCGCTCGAGCAGAACTCATCTCAGAAGAGGATCTGGCAGCAATGATATCCTGGATT  
ACAAGGATGACGACGATAAGGTTTAA

Protein Sequence: >RC201440 protein sequence  
Red=Cloning site Green=Tags(s)

MAEQQGRELEAECPCWNPFNNTFHTPKMLDCCHSFCVECLAHLSLVTPARRRLLCPLCRQPTVLASGQP  
VTDLPTDTAML TLLRLEPHHVILEGHQLCLKDQPKSRYFLRQPRVYTLDLGPQGGQTGPPPDATASATVS  
TPILIPSHSLRECFRNPQFRIFAYLMAVILSVTLLLIIFSIFWTKQFLWGVG

**TR**TRPLEQKLISEEDLAANDILDYKDDDDKV

Chromatograms: [https://cdn.origene.com/chromatograms/mk6419\\_b10.zip](https://cdn.origene.com/chromatograms/mk6419_b10.zip)



[View online »](#)

**Restriction Sites:** SgfI-MluI

**Cloning Scheme:**



**ACCN:** NM\_145051

**ORF Size:** 576 bp

**OTI Disclaimer:** The molecular sequence of this clone aligns with the gene accession number as a point of reference only. However, individual transcript sequences of the same gene can differ through naturally occurring variations (e.g. polymorphisms), each with its own valid existence. This clone is substantially in agreement with the reference, but a complete review of all prevailing variants is recommended prior to use. [More info](#)

**OTI Annotation:** This clone was engineered to express the complete ORF with an expression tag. Expression varies depending on the nature of the gene.

**Components:** The ORF clone is ion-exchange column purified and shipped in a 2D barcoded Matrix tube containing 10ug of transfection-ready, dried plasmid DNA (reconstitute with 100 ul of water).

- Reconstitution Method:**
1. Centrifuge at 5,000xg for 5min.
  2. Carefully open the tube and add 100ul of sterile water to dissolve the DNA.
  3. Close the tube and incubate for 10 minutes at room temperature.
  4. Briefly vortex the tube and then do a quick spin (less than 5000xg) to concentrate the liquid at the bottom.
  5. Store the suspended plasmid at -20°C. The DNA is stable for at least one year from date of shipping when stored at -20°C.

**RefSeq:** [NM\\_145051.2](#), [NP\\_659488.1](#)

**RefSeq Size:** 1237 bp

**RefSeq ORF:** 579 bp

**Locus ID:** 138065

**UniProt ID:** [Q96D59](#)

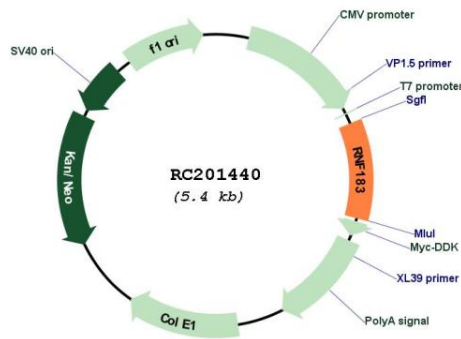
**Cytogenetics:** 9q32

**Protein Families:** Druggable Genome, Transmembrane

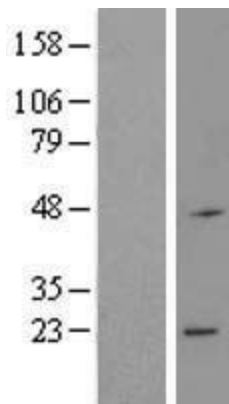
**MW:** 21.7 kDa

**Gene Summary:** Acts as a E3 ubiquitin ligase catalyzing the covalent attachment of ubiquitin moieties onto substrate proteins (PubMed:29507230). Triggers apoptosis in response to prolonged ER stress by mediating the polyubiquitination and subsequent proteasomal degradation of BCL2L1 (PubMed:29507230). May collaborate with FATE1 to restrain BIK protein levels thus regulating apoptotic signaling (PubMed:26567849).[UniProtKB/Swiss-Prot Function]

**Product images:**



Circular map for RC201440



Western blot validation of overexpression lysate (Cat# [LY408067]) using anti-DDK antibody (Cat# [TA50011-100]). Left: Cell lysates from untransfected HEK293T cells; Right: Cell lysates from HEK293T cells transfected with RC201440 using transfection reagent MegaTran 2.0 (Cat# [TT210002]).