

## Product datasheet for RC201437

### SDHAF2 (NM\_017841) Human Tagged ORF Clone

#### Product data:

**Product Type:** Expression Plasmids  
**Product Name:** SDHAF2 (NM\_017841) Human Tagged ORF Clone  
**Tag:** Myc-DDK  
**Symbol:** SDHAF2  
**Synonyms:** C11orf79; PGL2; SDH5  
**Mammalian Cell Selection:** Neomycin  
**Vector:** pCMV6-Entry (PS100001)  
**E. coli Selection:** Kanamycin (25 ug/mL)  
**ORF Nucleotide Sequence:** >RC201437 ORF sequence  
Red=Cloning site Blue=ORF Green=Tags(s)

TTTTGTAATACGACTCACTATAGGGCGCCGGGAATTCGTCGACTGGATCCGGTACCGAGGAGATCTGCC  
GCC**CGATCGCC**

ATGGCGGTGTCTACAGTGTTCGACTTCGTCGCTGATGCTTGCTCTGTCAAGGCACAGCCTATTGTCTC  
CTTTGCTCAGTGTGACATCATTACAGCGCTTCTACAGAGGTGACAGCCCAACAGATTCACAAAAGGACAT  
GATTGAAATCCCTTTGCCTCCATGGCAGGAGAGAACTGATGAATCCATAGAAACAAAAGAGCCCGCTG  
CTCTATGAGAGCAGAAAGAGGGGAATGTTGAAAACCTGCATTCTTCTTAGTCTTTTTGCTAAAGAACATC  
TGCAGCACATGACAGAAAAGCAGCTGAACCTCTATGACCGCTGATTAACGAGCCTAGTAATGACTGGGA  
TATTTACTACTGGCCACAGAAGCTAAACCAGCCCGAGAAATATTTGAAAATGAAGTCATGGCCCTGCTG  
AGAGACTTTGCTAAAAACAAAACAAAAGAGCAGAGACTGCGTGCCCGAGATCTTGAGTACCTCTTTGAAA  
AGCCACGT

**ACGCGT**ACGCGGCCGCTCGAGCAGAACTCATCTCAGAAGAGGATCTGGCAGCAAATGATATCCTGGATT  
ACAAGGATGACGACGATAAGGTTTAA

**Protein Sequence:** >RC201437 protein sequence  
Red=Cloning site Green=Tags(s)

MAVSTVFSTSSMLLALSRHLLSPLL SVTSFRRFYRGDSPTDSQKDMIEIPLPPWQERTDESIETKRRL  
LYESRKRGMLENCILLSLFAKEHLQHMTEKQLNLYDRLINEPSNDWDIYYWATEAKPAPEIFENEVMALL  
RDFAKNKNKEQRLRAPDLEYLFEKPR

**TRTRPLEQKLISEEDLAANDILDYKDDDDKV**

**Chromatograms:** [https://cdn.origene.com/chromatograms/mk6084\\_e12.zip](https://cdn.origene.com/chromatograms/mk6084_e12.zip)



[View online »](#)



**Note:** Plasmids are not sterile. For experiments where strict sterility is required, filtration with 0.22um filter is required.

**RefSeq:** [NM\\_017841.4](#)

**RefSeq Size:** 1227 bp

**RefSeq ORF:** 501 bp

**Locus ID:** 54949

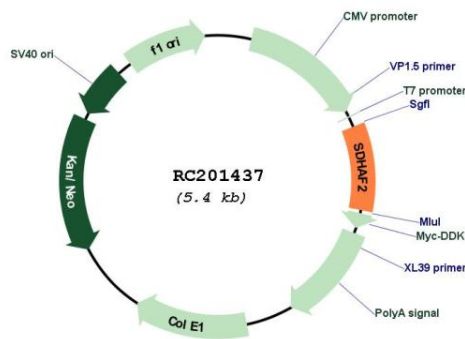
**UniProt ID:** [Q9NX18](#)

**Cytogenetics:** 11q12.2

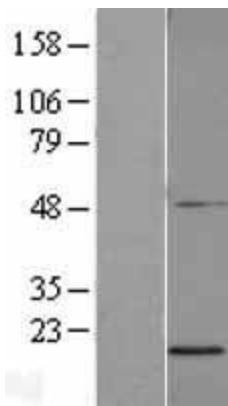
**MW:** 19.6 kDa

**Gene Summary:** This gene encodes a mitochondrial protein needed for the flavination of a succinate dehydrogenase complex subunit required for activity of the complex. Mutations in this gene are associated with paraganglioma.[provided by RefSeq, Jul 2010]

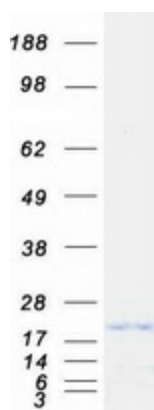
### Product images:



Circular map for RC201437



Western blot validation of overexpression lysate (Cat# [LY402625]) using anti-DDK antibody (Cat# [TA50011-100]). Left: Cell lysates from untransfected HEK293T cells; Right: Cell lysates from HEK293T cells transfected with RC201437 using transfection reagent MegaTran 2.0 (Cat# [TT210002]).



Coomassie blue staining of purified SDHAF2 protein (Cat# [TP301437]). The protein was produced from HEK293T cells transfected with SDHAF2 cDNA clone (Cat# RC201437) using MegaTran 2.0 (Cat# [TT210002]).