

Product datasheet for RC201436

RAB3C (NM_138453) Human Tagged ORF Clone

Product data:

Product Type: Expression Plasmids
Product Name: RAB3C (NM_138453) Human Tagged ORF Clone
Tag: Myc-DDK
Symbol: RAB3C
Mammalian Cell Selection: Neomycin
Vector: pCMV6-Entry (PS100001)
E. coli Selection: Kanamycin (25 ug/mL)
ORF Nucleotide Sequence: >RC201436 ORF sequence
Red=Cloning site Blue=ORF Green=Tags(s)

TTTTGTAATACGACTCACTATAGGGCGGCCGGAATTCGTCGACTGGATCCGGTACCGAGGAGATCTGCC
GCC**CGATCGCC**

ATGAGACACGAAGCGCCCATGCAGATGGCCTCTGCCAAGATGCCAGGTACGGCCAGAAAGACTCCTCTG
ATCAGAACTTTGACTACATGTTCAAATTACTCATCATCGGCAATAGCAGTGTGGGAAAACATCTTTTCT
ATTCGGTTATGCAGATGACTCCTTTACATCTGCATTCGTGACAGTGGGATCGATTTCAAAGTAAAA
ACTGTATTCAAAAATGAAAAGAGAATCAAGCTTCAGATTTGGGACACAGCAGGCCAGGAAAGATACAGGA
CTATCACACAGCCTATTATCGTGGAGCCATGGGCTTTATTTAATGTATGACATTACAAATGAAGAATC
TTCAATGCAGTACAAGATTGGTCAACTCAAATCAAACATACTCTGGGACAATGCCCAAGTTATTCTG
GTTGGGAACAAGTGTGACATGGAAGACGAGCGGTCATCTCAACTGAGCGAGGTCAACATTTAGGAGAAC
AGCTTGGGTTTGTAGTTTTTGAACAAGTGCCAAGGACAACATTAATGTCAAGCAGACATTTGAGCGCT
TGTGGATATCATCTGCGACAAAATGTCAGAGAGTTGGAGACTGATCCTGCCATCACTGCTGCAAAGCAG
AACACGAGACTCAAGGAACTCCTCCTCACCGCAGCCCAACTGTGCCTGC

ACGCGTACGCGGCCGCTCGAGCAGAAACTCATCTCAGAAGAGGATCTGGCAGCAAATGATATCCTGGATT
ACAAGGATGACGACGATAAGGTTTAA

Protein Sequence: >RC201436 protein sequence
Red=Cloning site Green=Tags(s)

MRHEAPMQMASAQDARYGQKDSDDQNFDFYMKLLIIGNSSVGKTSFLFRYADDSFTSAFVSTVGDIFKVK
TVFKNEKRIKLQIWDTAGQERYRTITTAAYYRGAMGFILMYDITNEESFNAVQDWSTQIKTYSWDNAQVIL
VGNKCDMEDERVIISTERGQHLGEQLGFEFFETSAKDNINVKQTFERLVDIICDKMSESLETDPAITAAKQ
NTRLKETPPPPQPNAC

TRTRPLEQKLISEEDLAANDILDYKDDDDKV



Chromatograms: https://cdn.origene.com/chromatograms/mk6419_f10.zip

Restriction Sites: SgfI-MluI

Cloning Scheme:



ACCN: NM_138453

ORF Size: 681 bp

OTI Disclaimer: The molecular sequence of this clone aligns with the gene accession number as a point of reference only. However, individual transcript sequences of the same gene can differ through naturally occurring variations (e.g. polymorphisms), each with its own valid existence. This clone is substantially in agreement with the reference, but a complete review of all prevailing variants is recommended prior to use. [More info](#)

OTI Annotation: This clone was engineered to express the complete ORF with an expression tag. Expression varies depending on the nature of the gene.

Components: The ORF clone is ion-exchange column purified and shipped in a 2D barcoded Matrix tube containing 10ug of transfection-ready, dried plasmid DNA (reconstitute with 100 ul of water).

Reconstitution Method:

1. Centrifuge at 5,000xg for 5min.
2. Carefully open the tube and add 100ul of sterile water to dissolve the DNA.
3. Close the tube and incubate for 10 minutes at room temperature.
4. Briefly vortex the tube and then do a quick spin (less than 5000xg) to concentrate the liquid at the bottom.
5. Store the suspended plasmid at -20°C. The DNA is stable for at least one year from date of shipping when stored at -20°C.

RefSeq: [NM_138453.4](#)

RefSeq Size: 1030 bp

RefSeq ORF: 684 bp

Locus ID: 115827

UniProt ID: [Q96E17](#)

Cytogenetics: 5q11.2

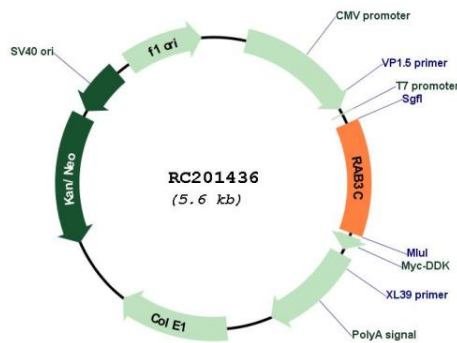
Domains: ras, RAN, RAS, RHO, RAB

Protein Families: Druggable Genome

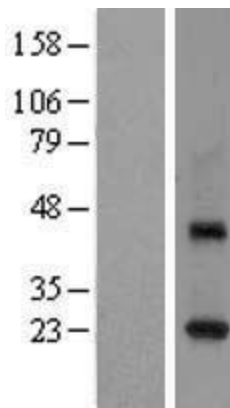
MW: 26 kDa

Gene Summary: This gene is a member of the RAS oncogene family and encodes a small GTPase. Other similar small GTPases are known to be involved in vesicle trafficking, and the encoded protein was shown to play a role in recycling phagocytosed MHC class 1 complexes to the cell surface. Two transcript variants encoding different isoforms have been found for this gene. [provided by RefSeq, Dec 2015]

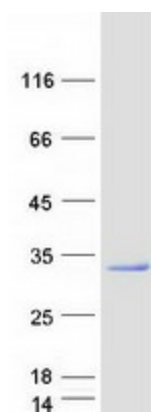
Product images:



Circular map for RC201436



Western blot validation of overexpression lysate (Cat# [LY408603]) using anti-DDK antibody (Cat# [TA50011-100]). Left: Cell lysates from untransfected HEK293T cells; Right: Cell lysates from HEK293T cells transfected with RC201436 using transfection reagent MegaTran 2.0 (Cat# [TT210002]).



Coomassie blue staining of purified RAB3C protein (Cat# [TP301436]). The protein was produced from HEK293T cells transfected with RAB3C cDNA clone (Cat# RC201436) using MegaTran 2.0 (Cat# [TT210002]).