

## Product datasheet for RC201431

### FAM110A (NM\_207121) Human Tagged ORF Clone

#### Product data:

Product Type:	Expression Plasmids
Product Name:	FAM110A (NM_207121) Human Tagged ORF Clone
Tag:	Myc-DDK
Symbol:	FAM110A
Synonyms:	bA371L19.3; C20orf55; F10
Mammalian Cell Selection:	Neomycin
Vector:	pCMV6-Entry (PS100001)
E. coli Selection:	Kanamycin (25 ug/mL)
ORF Nucleotide Sequence:	>RC201431 ORF sequence Red=Cloning site Blue=ORF Green=Tags(s)

TTTTGTAATACGACTCACTATAGGGCGCCGGGAATTCGTCGACTGGATCCGGTACCGAGGAGATCTGCC  
GCC**CGGATCGCC**

ATGCCTGTGCACAGCTGAGCCCCGGAGCCCCGTCCGCCCGCCCTACCTTGCCGCTGCGGACCAGGG  
TCCCTGGTACCTGCTACGGGGCCGGCAGATGGTGGAGCCCGAAACCGAGCGCTGTGGAGCGCTGGA  
GGCCGACAAGCCAAGTACGTCAAGAGCCTGCACGTGGCCAACACCCGCCAGGAGCCTGTGCAGCCCTG  
CTGTCAAACAGCCGCTTTCAGCCCTGAGACTCGCCGCACAGTCTCACGCCAGCCGCCGAGCCCTGC  
CTGGCCCCTGCCGACGGCCCCAGCTGGACCTGGACATCCTCAGCAGCCTCATCGACTTGTGTGACAGCCC  
CGTGTCCCTGCCGAGGCCAGCCGACTCCTGGACGGCCGAGGGAGCCGCGCTCCTCCCCAGCCACC  
CCTCCGCGACCGCCAGTACCTCTGCGGTCCGCCGGTGGACGTCCGCCCCCTGCCCGCTCGCCTG  
CCCGGCCCTGCCATCACCCGGCCCTGCCGCCCTCCAGCCAGCCCGCCGCCGGTTTGCAACGCTC  
CAAGTCGGACTTGAGCGAGCGCTTTTCTAGGGCAGCCGCTGATCTCGAGCGCTTTTTAACTTCTGCGGC  
CTGGACCCGGAGGAGCGAGAGGTTGGGTGTGGCCACCTGGCACGGCCAGCTCGGATATCGTGTCC  
TGGCAGGGCCAGTGCTGGCCGGCAGCTCTGAAGGGGCTGCTCCGCCGAGCTCGGTGACTGTTGA  
GGAGCGGGCCCGGAGCGCTTCCCTATGGCGTGTGGTGGTGGAGCGCAATGCCCGCTGATCAAGTGG  
TTGTATGGGCTAAGGCAGGCTCGGGAGAGCCAGCAGCTGAAGGC

**ACGCGT**ACGCGGCCGCTCGAGCAGAAACTCATCTCAGAAGAGGATCTGGCAGCAAATGATATCCTGGATT  
ACAAGGATGACGACGATAAGGTTTAA



[View online »](#)

**Protein Sequence:** >RC201431 protein sequence  
Red=Cloning site Green=Tags(s)

```

MPVHTLSPGAPSAPALPCRLRTRVPGYLLRGPADGGARKPSAVERLEADKAKYVKS LHVANTRQEPVQPL
LSKQPLFSPETRRTVLTPSRRALPGPCRRPQLDLIDLSSLIDLCDSPVSPA EASRTPGRAEGAGRPPPAT
PPRPPPSTSAVRRVDVRPLPASPAPPCSPGPAASSPARPPGLQRSKSDLSERF SRAAADLERFFNFCG
LDPEEARGLGVAHLARASSDIVSLAGPSAGPGSSEGGCSRRSSVTVEERARERVPYGVSVVERNARVIKW
LYGLRQARESPA AEG
    
```

TRTRPLEQKLISEEDLAANDILDYKDDDDKV

**Chromatograms:** [https://cdn.origene.com/chromatograms/mk6395\\_b02.zip](https://cdn.origene.com/chromatograms/mk6395_b02.zip)

**Restriction Sites:** SgfI-MluI

**Cloning Scheme:**



**ACCN:** NM\_207121

**ORF Size:** 885 bp

**OTI Disclaimer:** The molecular sequence of this clone aligns with the gene accession number as a point of reference only. However, individual transcript sequences of the same gene can differ through naturally occurring variations (e.g. polymorphisms), each with its own valid existence. This clone is substantially in agreement with the reference, but a complete review of all prevailing variants is recommended prior to use. [More info](#)

**OTI Annotation:** This clone was engineered to express the complete ORF with an expression tag. Expression varies depending on the nature of the gene.

**Components:** The ORF clone is ion-exchange column purified and shipped in a 2D barcoded Matrix tube containing 10ug of transfection-ready, dried plasmid DNA (reconstitute with 100 ul of water).

**Reconstitution Method:**

1. Centrifuge at 5,000xg for 5min.
2. Carefully open the tube and add 100ul of sterile water to dissolve the DNA.
3. Close the tube and incubate for 10 minutes at room temperature.
4. Briefly vortex the tube and then do a quick spin (less than 5000xg) to concentrate the liquid at the bottom.
5. Store the suspended plasmid at -20°C. The DNA is stable for at least one year from date of shipping when stored at -20°C.

**RefSeq:** [NM\\_207121.3](#), [NP\\_997004.1](#)

**RefSeq Size:** 1619 bp

**RefSeq ORF:** 888 bp

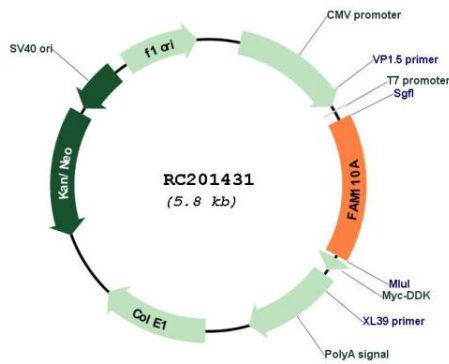
**Locus ID:** 83541

**UniProt ID:** [Q9BQ89](#)

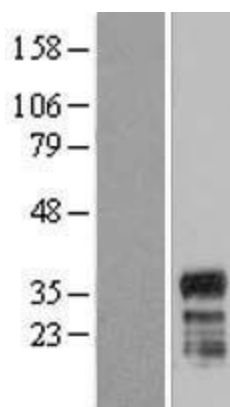
**Cytogenetics:** 20p13

**MW:** 31.3 kDa

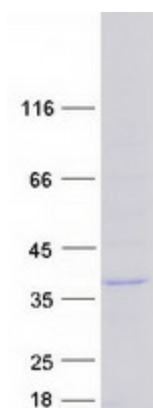
**Product images:**



Circular map for RC201431



Western blot validation of overexpression lysate (Cat# [LY410535]) using anti-DDK antibody (Cat# [TA50011-100]). Left: Cell lysates from untransfected HEK293T cells; Right: Cell lysates from HEK293T cells transfected with [RC204584] using transfection reagent MegaTran 2.0 (Cat# [TT210002]).



Coomassie blue staining of purified FAM110A protein (Cat# [TP301431]). The protein was produced from HEK293T cells transfected with FAM110A cDNA clone (Cat# RC201431) using MegaTran 2.0 (Cat# [TT210002]).