

Product datasheet for **RC201429**

SGTA (NM_003021) Human Tagged ORF Clone

Product data:

Product Type:	Expression Plasmids
Tag:	Myc-DDK
Symbol:	SGTA
Synonyms:	alphaSGT; hSGT; SGT
Mammalian Cell Selection:	Neomycin
Vector:	pCMV6-Entry (PS100001)
E. coli Selection:	Kanamycin (25 ug/mL)
ORF Nucleotide Sequence:	>RC201429 ORF sequence Red=Cloning site Blue=ORF Green=Tags(s)

TTTTGTAATACGACTCACTATAGGGCGGCCGGAATTCGTCGACTGGATCCGGTACCGAGGAGATCTGCC
GCC**CGATCGCC**

ATGGACAACAAGAAGCGCCTGGCCTACGCCATCATCCAGTTCTGCATGACCAGCTCCGGCACGGGGGCC
TCTCGTCCGATGCTCAGGAGAGCTTGGAAGTCGCCATCCAGTGCCTGGAGACTGCGTTTGGGGTGACGGT
AGAAGACAGTGACCTTGGCTCCCTCAGACTCTGCCGAGATATTTGAAGCGGCTGCCACGGGAAGGAG
ATGCCGAGGACCTGAGGAGCCCCGCGCAACCCCGCCTTCGAGGAGGACTCAGCAGAGGCAGAGCGCC
TCAAAACCGAAGGAAACGAGCAGATGAAAGTGGAACCTTTGAAGCTGCCGTGCATTTCTACGAAAAGC
CATCGAGCTCAACCCAGCCAACGCGTCTATTTCTGCAACAGAGCCGAGCCTACAGCAAACTCGGCAAC
TACGAGGCGCGGTGCAGGACTGTGAGCGGGCCATCTGCATTGACCCGGCCTACAGCAAGGCCTACGGCA
GGATGGGCTGGCGCTCTCCAGCCTCAACAAGCACGTGGAGGCCGTGGCTTACTACAAGAAGGCTCTGGA
GCTGGACCCCGACAACGAGACATACAAGTCCAACCTCAAGATAGCGGAGCTGAAGCTGCGGGAGGCCCCC
AGCCCCACGGGAGGCGTGGGAGCTTCGACATCGCCGGCCTGCTGAACAACCTGGCTTCATGAGCATGG
CTTCGAACCTAATGAACAATCCCAGATTGAGCAGCTCATGTCCGGCATGATTTCCGGGTGGCAACAACCC
CTTGGGAACCTCCCGGACCCAGCCCTCGCAGAACGACCTGGCCAGCCTCATCCAGGCGGGCCAGCAGTTT
GCCCAGCAGATGCAGCAGCAGAACCAGAGTTGATAGAGCAGCTCAGGAGCCAGATCCGGAGTCGGACGC
CCAGCGCCAGCAACGACGACCAGCAGGAG

ACGCGTACGCGGCCGCTCGAGCAGAACTCATCTCAGAAGAGGATCTGGCAGCAATGATATCCTGGATT
ACAAGGATGACGACGATAAGGTTTAA


[View online »](#)

Protein Sequence: >RC201429 protein sequence
Red=Cloning site Green=Tags(s)

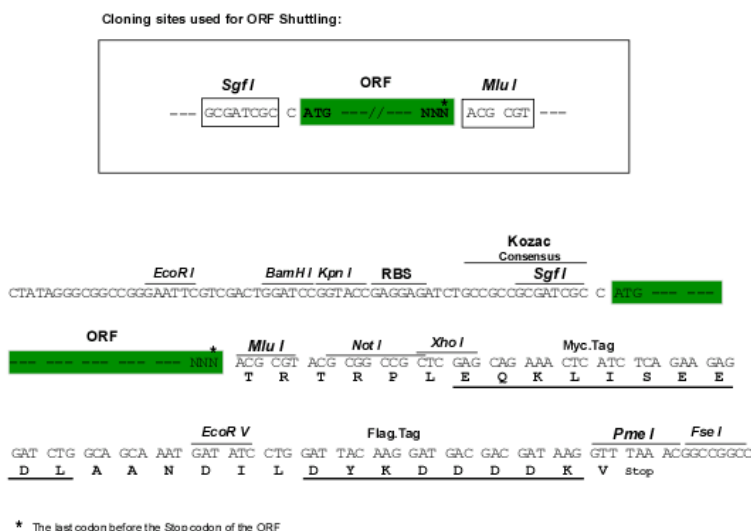
MDNKKRLAYAI IQFLHDQLRHGGLSSDAQESLEVAIQCLETAFGVTVEDSDLALPQTLPEIFEAATGKE
MPQDLRSPARTPPSEEDSAEERLKTGEGNQMKVENFEAAVHFYGKAIELNPANAVYFCNRAAAYSKLGN
YAGAVQDCERAICIDPAYSAYGRMGLALSSLNKHVEAVYYKKAELDPDNETYKSNLKIAELKLREAP
SPTGGVGSFDIAGLLNPNPGFMSMASNLMNPNQIQQLMSGMISGGNNPLGTPGTSPSQNDLASLIQAGQQF
AQMQQQNP ELIEQLRSQIRSRTPSASNDDQQE

TRTRPLEOKLISEEDLAANDILDYKDDDDKV

Chromatograms: https://cdn.origene.com/chromatograms/mk6395_d02.zip

Restriction Sites: Sgfl-MluI

Cloning Scheme:



ACCN: NM 003021

ORF Size: 939 bp

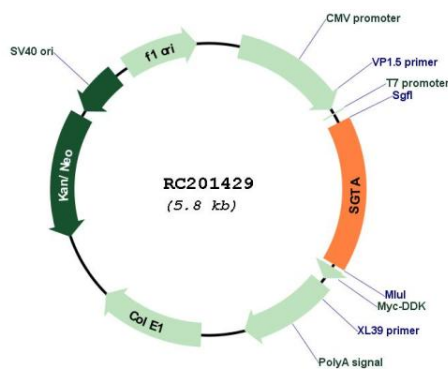
OTI Disclaimer: The molecular sequence of this clone aligns with the gene accession number as a point of reference only. However, individual transcript sequences of the same gene can differ through naturally occurring variations (e.g. polymorphisms), each with its own valid existence. This clone is substantially in agreement with the reference, but a complete review of all prevailing variants is recommended prior to use. More info

OTI Annotation: This clone was engineered to express the complete ORF with an expression tag. Expression varies depending on the nature of the gene.

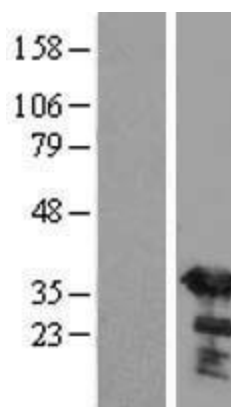
Components: The ORF clone is ion-exchange column purified and shipped in a 2D barcoded Matrix tube containing 10ug of transfection-ready, dried plasmid DNA (reconstitute with 100 ul of water).

Reconstitution Method:	<ol style="list-style-type: none"> 1. Centrifuge at 5,000xg for 5min. 2. Carefully open the tube and add 100ul of sterile water to dissolve the DNA. 3. Close the tube and incubate for 10 minutes at room temperature. 4. Briefly vortex the tube and then do a quick spin (less than 5000xg) to concentrate the liquid at the bottom. 5. Store the suspended plasmid at -20°C. The DNA is stable for at least one year from date of shipping when stored at -20°C.
Note:	Plasmids are not sterile. For experiments where strict sterility is required, filtration with 0.22um filter is required.
RefSeq:	<u>NM_003021.4</u>
RefSeq Size:	2358 bp
RefSeq ORF:	942 bp
Locus ID:	6449
UniProt ID:	<u>O43765</u>
Cytogenetics:	19p13.3
Domains:	TPR
Protein Families:	Druggable Genome
MW:	34.1 kDa
Gene Summary:	This gene encodes a protein which is capable of interacting with the major nonstructural protein of parvovirus H-1 and 70-kDa heat shock cognate protein; however, its function is not known. Since this transcript is expressed ubiquitously in various tissues, this protein may serve a housekeeping function. [provided by RefSeq, Jul 2008]

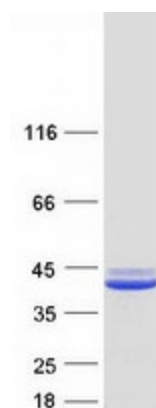
Product images:



Circular map for RC201429



Western blot validation of overexpression lysate (Cat# [LY418951]) using anti-DDK antibody (Cat# [TA50011-100]). Left: Cell lysates from untransfected HEK293T cells; Right: Cell lysates from HEK293T cells transfected with RC201429 using transfection reagent MegaTran 2.0 (Cat# [TT210002]).



Coomassie blue staining of purified SGTA protein (Cat# [TP301429]). The protein was produced from HEK293T cells transfected with SGTA cDNA clone (Cat# RC201429) using MegaTran 2.0 (Cat# [TT210002]).