

Product datasheet for RC201415

NPDC1 (NM_015392) Human Tagged ORF Clone

Product data:

Product Type:	Expression Plasmids
Product Name:	NPDC1 (NM_015392) Human Tagged ORF Clone
Tag:	Myc-DDK
Symbol:	NPDC1
Synonyms:	CAB; CAB-; CAB-1; CAB1; NPDC-1
Mammalian Cell Selection:	Neomycin
Vector:	pCMV6-Entry (PS100001)
E. coli Selection:	Kanamycin (25 ug/mL)
ORF Nucleotide Sequence:	>RC201415 ORF sequence Red=Cloning site Blue=ORF Green=Tags(s)

TTTTGTAATACGACTCACTATAGGGCGGCCGGAATTCGTCGACTGGATCCGGTACCGAGGAGATCTGCC
GCC**CGATCGCC**

ATGGCGACGCGCTGCCTCCGCCCTCCCCGCGGCACCTGCGGCTGCTGCGGCTGCTGCTCTCCGGCCTCG
TCCTCGGC GCGCCCTGCGTGGAGCCGCGCCGCCACCCGGATGTAGCCGCTGTCCGGGAGCCTGGA
CTGTGCCCTGAAGAGCGGGCAAGGTGCTCCTGGTGCACATGCCTGTGGGCCCTGCCTTCAGCCCTTC
CAGGAGGACCAGCAAGGGCTCTGTGTGCCAGGATGCGCCGCCCTCCAGGCGGGGCCGGCCCCAGCCCA
GACTGGAAGATGAGATTGACTTCTGGCCAGGAGCTTGCCCGGAAGGAGTCTGGACTCAACTCCGCC
CCTACCCAAGGACCGACAGCGGCTCCCGGAGCCTGCCACCCTGGGCTTCTCGGCACGGGGCAGGGGCTG
GAGCTGGGCTCCCTCCACTCCAGGAACCCCCACGCCACGCCCCACACCTCCCTGGGCTCCCTGTGT
CATCCGACCCGGTGCACATGTCGCCCCGGAGCCCCGGGAGGGCAAGGCGACGGCCTCGCCCTGTGCT
GATCCTGGCGTTCTGTGTGGCCGGTGCAGCCGCCCTCCTCGTAGCCTCCCTCTGCTGGTGCAGGCTGCAG
CGTGAGATCCGCCTGACTCAGAAGGCCGACTACGCCACTGCGAAGGCCCTGGCTCACCTGCAGTCCCC
GGATCTCGCTGGGACCAGCGGCTGGCACAGAGCGGGAGATGTACCACTACCAGCACCAACGGCAACA
GATGCTGTGCCTGGAGCGGCATAAAGAGCCACCAAGGAGCTGGACACGGCCTCCTCGGATGAGGAGAAT
GAGGACGGAGACTTACGGTGTACGAGTGCCCGGGCCTGGCCCCGACCGGGAAATGGAGGTGCGCAACC
CTCTGTTCGACCAGCCGCACTGTCCGCCCCCTGCCGGCCCCAGCTCACCGCCTGCACTGCCA

ACGCGTACGCGGCCGCTCGAGCAGAAACTCATCTCAGAAGAGGATCTGGCAGCAAATGATATCCTGGATT
ACAAGGATGACGACGATAAGGTTTAA



[View online »](#)

Protein Sequence: >RC201415 protein sequence
Red=Cloning site Green=Tags(s)

MATPLPPSPRHLRLRLLL SGLVLGAALRGAAGHPDVAACPGSLDCALKRRARCPPGAHACGPCLQPF
 QEDQQGLCVPRMRPPGGGRPQPRLEDEIDFLAQELARKESGHSTPPLPKDRQLPEPATLGF SARGOGL
 ELGLPSTPGTPTPTHTSLGSPVSSDPVHMSPLEPRGGQDGLALVILAF CVAGAAALSVASLWCRLQ
 REIRLTQKADYATAKAPGSPAAPRI SPGDQRLAQSAEMYHYQHQRQQLCLERHKEPPKELDTASSDEEN
 EDGDFTVYECPLAPTGEVNRNPLFDHAALSAPLPAPSSPPALP

TRTRPLEQKLISEEDLAANDILDYKDDDDKV

Chromatograms: https://cdn.origene.com/chromatograms/mk6083_b11.zip

Restriction Sites: SgfI-MluI

Cloning Scheme:



* The last codon before the Stop codon of the ORF

ACCN: NM_015392

ORF Size: 975 bp

OTI Disclaimer: The molecular sequence of this clone aligns with the gene accession number as a point of reference only. However, individual transcript sequences of the same gene can differ through naturally occurring variations (e.g. polymorphisms), each with its own valid existence. This clone is substantially in agreement with the reference, but a complete review of all prevailing variants is recommended prior to use. [More info](#)

OTI Annotation: This clone was engineered to express the complete ORF with an expression tag. Expression varies depending on the nature of the gene.

Components: The ORF clone is ion-exchange column purified and shipped in a 2D barcoded Matrix tube containing 10ug of transfection-ready, dried plasmid DNA (reconstitute with 100 ul of water).

Reconstitution Method:

1. Centrifuge at 5,000xg for 5min.
2. Carefully open the tube and add 100ul of sterile water to dissolve the DNA.
3. Close the tube and incubate for 10 minutes at room temperature.
4. Briefly vortex the tube and then do a quick spin (less than 5000xg) to concentrate the liquid at the bottom.
5. Store the suspended plasmid at -20°C. The DNA is stable for at least one year from date of shipping when stored at -20°C.

RefSeq: [NM_015392.4](#)

RefSeq Size: 1548 bp

RefSeq ORF: 978 bp

Locus ID: 56654

UniProt ID: [Q9NQX5](#)

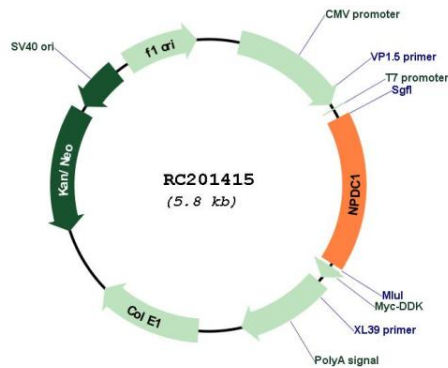
Cytogenetics: 9q34.3

Protein Families: Transmembrane

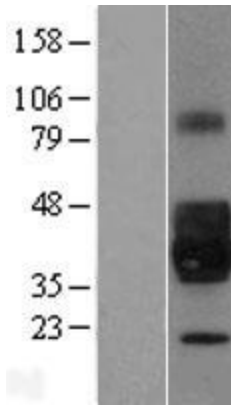
MW: 34.5 kDa

Gene Summary: Suppresses oncogenic transformation in neural and non-neural cells and down-regulates neural cell proliferation. Might be involved in transcriptional regulation (By similarity). [UniProtKB/Swiss-Prot Function]

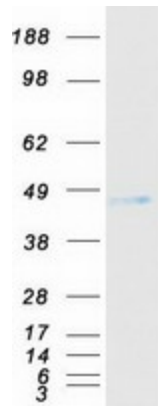
Product images:



Circular map for RC201415



Western blot validation of overexpression lysate (Cat# [LY414555]) using anti-DDK antibody (Cat# [TA50011-100]). Left: Cell lysates from untransfected HEK293T cells; Right: Cell lysates from HEK293T cells transfected with RC201415 using transfection reagent MegaTran 2.0 (Cat# [TT210002]).



Coomassie blue staining of purified NPDC1 protein (Cat# [TP301415]). The protein was produced from HEK293T cells transfected with NPDC1 cDNA clone (Cat# RC201415) using MegaTran 2.0 (Cat# [TT210002]).