

Product datasheet for RC201414

FCRLM1 (FCRLA) (NM_032738) Human Tagged ORF Clone

Product data:

Product Type:	Expression Plasmids
Product Name:	FCRLM1 (FCRLA) (NM_032738) Human Tagged ORF Clone
Tag:	Myc-DDK
Symbol:	FCRLM1
Synonyms:	FCRL; FCRL1; FCRLb; FCRLc1; FCRLc2; FCRLd; FCRLe; FCRLM1; FCRLX; FCRX; FREQ
Mammalian Cell Selection:	Neomycin
Vector:	pCMV6-Entry (PS100001)
E. coli Selection:	Kanamycin (25 ug/mL)
ORF Nucleotide Sequence:	>RC201414 ORF sequence Red=Cloning site Blue=ORF Green=Tags(s)

TTTTGTAATACGACTCACTATAGGGCGCCGGGAATTCGTCGACTGGATCCGGTACCGAGGAGATCTGCC
GCC**CGATCGCC**

ATGTTGAAGAAAATCAGTGTGGGGTTCAGGAGACCTAAACACAGTCACCATGAAGCTGGGCTGTGTCC
TCATGGCTGGGCCCTACCTTCCCTTGGTGTGCTCTGGTGGCCAGATGCTACTGGCTGCCAGTTT
TGAGACGCTGCAGTGTGAGGGACCTGTCTGCACTGAGGAGAGCAGCTGCCACACGGAGGATGACTTACT
GATGCAAGGGAAGCTGGCTTCCAGGTCAAGGCCTACACTTTCAGTGAACCCTTCCACCTGATTGTGTCT
ATGACTGGCTGATCCTCCAAGGTCCAGCCAAGCCAGTTTTTGAAGGGGACCTGCTGGTTCGCGCTGCCA
GGCTGGCAAGACTGGCCACTGACTCAGGTGACCTTCTACCGAGATGGCTCAGCTCTGGTCCCCCGGG
CCTAACAGGGAATTCTCCATCACCGTGGTACAAAAGGCAGACAGCGGGCACTACCACTGCAGTGGCATCT
TCCAGAGCCCTGGTCTGGGATCCCAGAAAACAGCATCTGTTGTGGCTATCACAGTCCAAGAACTGTTTCC
AGCGCAAATTCTCAGAGCTGTACCCTCAGCTGAACCCCAAGCAGGAAGCCCCATGACCCTGAGTTGTGAG
ACAAAGTTGCCCCGTCAGAGGTGAGTCCAGTCCCGCCCTCCTTCTCCTTCTACAAGGATGGAAGGATAGTGC
AAAGCAGGGGGCTCTCCTCAGAATTCAGATCCCACAGCTTCAAGAGATCACTCCGGGTCACTACTGGT
TGAGGCAGCCACTGAGGACAACCAAGTTTGAACAGAGCCCCAGCTAGAGATCAGAGTGCAGGGTGTCT
TCCAGCTGCTGCACCTCCCACATTGAATCCAGCTCCTCAGAAATCAGCTGCTCCAGAACTGCTCCTG
AGGAGGCCCTGGGCTCTGCCTCCGCCCAACCCATCTTCTGAGGATCCAGGCTTTTCTCTCCTCT
GGGATGCCAGATCCTCATCTGTATCACCAGATGGGCTTCTTCTCAAACACATGCAGGATGTGAGAGTC
CTCCTCGTACCTGCTCATGGAGTTGAGGGAATTATCTGGCCACCAGAAGCCTGGGACCACAAAGGCTA
CTGCTGAA

ACGCGTACGCGGCCGCTCGAGCAGAAACTCATCTCAGAAGAGGATCTGGCAGCAAATGATATCCTGGATT
ACAAGGATGACGACGATAAGGTTTAA



[View online >](#)

Protein Sequence: >RC201414 protein sequence
Red=Cloning site Green=Tags(s)

MLKKISVGVAGDLNVTMKLGCVLMAWALYL SLGVLWVAQMLLAASFETLQCEGPVCTEESSCHTEDDLT
DAREAGFQVKAYTFSEPFHLIVSYDWLILQGPAPKPVFEGDLLVLRQAWQDWPLTQVTFYRDGSGALGPPG
PNREFSITVVQKADSGHYHCSGIFQSPGPGIPETASVVAITVQELFPAPILRAVPSAEPQAGSPMTLSCQ
TKLPLQRSAAARLLFSFYKDGRIVQSRGLSSEFQIPTASEDHSGSYWCEAATEDNQVWKQSPQLEIRVQGA
SSSAAPPTLNPAPQKSAAPGTAPEEAPGPLPPPPTPSSSEDPGFSSPLGMPDPLHYHQMLLLKHMQDVRV
LLGHLLMELRELSGHQKPGTTKATAE

TRTRPLEQKLISEEDLAANDILDYKDDDDKV

Chromatograms: https://cdn.origene.com/chromatograms/mk6151_g03.zip

Restriction Sites: SgfI-MluI

Cloning Scheme:



* The last codon before the Stop codon of the ORF

ACCN: NM_032738

ORF Size: 1128 bp

OTI Disclaimer: The molecular sequence of this clone aligns with the gene accession number as a point of reference only. However, individual transcript sequences of the same gene can differ through naturally occurring variations (e.g. polymorphisms), each with its own valid existence. This clone is substantially in agreement with the reference, but a complete review of all prevailing variants is recommended prior to use. [More info](#)

OTI Annotation: This clone was engineered to express the complete ORF with an expression tag. Expression varies depending on the nature of the gene.

Components: The ORF clone is ion-exchange column purified and shipped in a 2D barcoded Matrix tube containing 10ug of transfection-ready, dried plasmid DNA (reconstitute with 100 ul of water).

Reconstitution Method:

1. Centrifuge at 5,000xg for 5min.
2. Carefully open the tube and add 100ul of sterile water to dissolve the DNA.
3. Close the tube and incubate for 10 minutes at room temperature.
4. Briefly vortex the tube and then do a quick spin (less than 5000xg) to concentrate the liquid at the bottom.
5. Store the suspended plasmid at -20°C. The DNA is stable for at least one year from date of shipping when stored at -20°C.

RefSeq: [NM_032738.3](#), [NP_116127.3](#)

RefSeq Size: 2357 bp

RefSeq ORF: 1080 bp

Locus ID: 84824

UniProt ID: [Q7L513](#)

Cytogenetics: 1q23.3

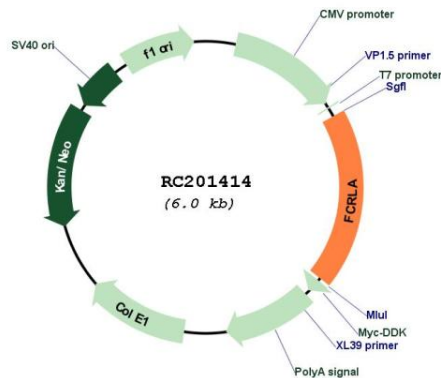
Domains: ig, IG

Protein Families: Secreted Protein, Transmembrane

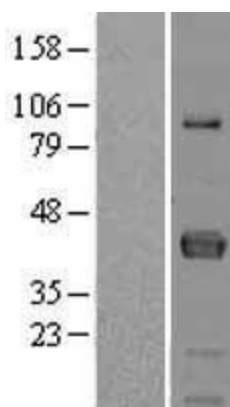
MW: 40.6 kDa

Gene Summary: This gene encodes a protein similar to receptors for the Fc fragment of gamma immunoglobulin (IgG). These receptors, referred to as FCGRs, mediate the destruction of IgG-coated antigens and of cells induced by antibodies. This encoded protein is selectively expressed in B cells, and may be involved in their development. This protein may also be involved in the development of lymphomas. Multiple alternatively spliced transcript variants that encode different protein isoforms have been described for this gene. [provided by RefSeq, Aug 2011]

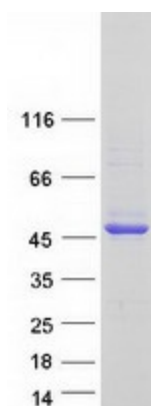
Product images:



Circular map for RC201414



Western blot validation of overexpression lysate (Cat# [LY403195]) using anti-DDK antibody (Cat# [TA50011-100]). Left: Cell lysates from untransfected HEK293T cells; Right: Cell lysates from HEK293T cells transfected with RC201414 using transfection reagent MegaTran 2.0 (Cat# [TT210002]).



Coomassie blue staining of purified FCRLA protein (Cat# [TP301414]). The protein was produced from HEK293T cells transfected with FCRLA cDNA clone (Cat# RC201414) using MegaTran 2.0 (Cat# [TT210002]).