

Product datasheet for **RC201405**

ALG9 (NM_024740) Human Tagged ORF Clone

Product data:

| | |
|---------------------------|---|
| Product Type: | Expression Plasmids |
| Product Name: | ALG9 (NM_024740) Human Tagged ORF Clone |
| Tag: | Myc-DDK |
| Symbol: | ALG9 |
| Synonyms: | CDG1L; DIBD1; GIKANIS; LOH11CR1J |
| Mammalian Cell Selection: | Neomycin |
| Vector: | pCMV6-Entry (PS100001) |
| E. coli Selection: | Kanamycin (25 ug/mL) |



[View online »](#)

ORF Nucleotide Sequence:

>RC201405 ORF sequence
 Red=Cloning site Blue=ORF Green=Tags(s)

TTTTGTAATACGACTCACTATAGGGCGGCCGGAATTCGTCGACTGGATCCGGTACCGAGGAGATCTGCC
 GCC**CGGATCGCC**

ATGGCTAGTCGAGGGCTCGGCAGCGCCTGAAGGGCAGCGGGCCAGCAGTGGGGATACGGCCCCGGCTG
 CGGACAAGCTGCGGGAGCTGCTGGGCAGCCGAGAGGCGGGCGGCGGAGCACCGGACCGAGTTATCTGG
 GAACAAAGCAGGACAAGTCTGGGCACCTGAAGGATCTACTGCTTTCAAGTGTCTGCTTTAGCAAGGTTA
 TGTGCTGCTCTCCTGAGCAACATCTCTGACTGTGATGAAACATCAACTACTGGGAGCCAACACTACTACC
 TCATCTATGGGGAAGGGTTTCAGACTTGGGAATTTCCCAAGCATATGCCATTGCTCCTATGCTTACCT
 GTTGCTTCATGCCTGGCCAGCTGCATTTTCAAGAAATTTCTACAACTAATAAGATTCTGTGTTTTAC
 TTTTTGCGATGTCTTCTGGCTTTTGTGAGCTGTATTTGGAACCTTACTTTTACAAGGCTGTGTGAAGA
 AGTTTGGGTTGCACGTGAGTGAATGATGCTAGCCTTCTGGTCTCAGCACTGGCATGTTTTGCTCATC
 ATCAGCATTCTTCTAGTAGTCTGTATGTACTACTACGTTGATAGCCATGACTGGATGGTATATGGAC
 AAGACTTCCATTGCTGTGCTGGGAGTAGCAGCTGGGGCTATCTTAGGCTGGCCATTCAAGTGCAGCTTTG
 GTTACCATTGCCTTTGATTTGCTGGTCAAGAACAGGTGGAAGAGTTTCTTTCATTGGTCCGCTGAT
 GGCCCTCACTATTTCTGGTGCCTGTGGTGGTCAATGACAGCTACTATTATGGGAAGTTGGTGATTGCA
 CCACTCAACATTGTTTTGTATAATGTCTTTACTCCTCATGGACCTGATCTTTATGGTACAGAACCCTGGT
 ATTTCTATTTAATTAATGGATTTCTGAATTTCAATGTAGCCTTTGCTTTGGCTCTCCTAGTCTACCACT
 GACTTCTCTTATGGAATACCTGCTGCAGAGATTTATGTTTCAAGATTTAGGCCACCCGATTGGCTTACC
 TTGGCTCCAATGTATATTTGGTTTATAATTTTCTCATCCAGCCTCACAAAGAGGAGAGATTTCTTTTCC
 CTGTGTATCCACTTATATGTCTCTGTGGCGCTGTGGCTCTCTGCACTTCAGCACAGTTTTCTGTACTT
 CCAGAAATGTTACCCTTTGTGTTTCAACGATATCGCCTGGAGCACTATACTGTGACATCGAATTGGCTG
 GCATTAGGAAGTGTCTTCTGTTTGGGCTCTTGTCAATTTCTCGCTCTGTGGCACTGTTCAGAGGATATC
 ACGGGCCCTTGATTTGTATCCAGAATTTTACCGAATTGCTACAGACCAACCATCCACTGTCCAGAG
 AGGCAGACCTGTGAATGTCTGTGTGGGAAAAGAGTGGTATCGATTTCCAGCAGCTTCTTCTTCTGAC
 AATTGGCAGCTTCAGTTCATTCCATCAGAGTTCAGAGGTCAGTTACCAAAACCTTTTGCAGAAGGACCTC
 TGGCCACCCGGATTGTTCTACTGACATGAATGACCAGAATCTAGAAGAGCCATCCAGATATATTGATAT
 CAGTAAATGCCATTTTGTGGATTTGGACACCATGAGAGAAACACCCGGGAGCCAAAATATTCATCC
 AATAAAGAAGAATGGATCAGCTTGGCCTATAGACCATTCTTGATGCTTCTAGATCTTCAAGCTGCTGC
 GGGCATTCTATGTCCCTTCTGTGAGTACAGTATACAGTGTACGTAAACTACCCATCCTCAAACCCCG
 GAAAGCAAAGCAAATCAGGAAGAAAAGTGGAGGT

ACGCGTACGCGGCCGCTCGAGCAGAAACTCATCTCAGAAGAGGATCTGGCAGCAAATGATATCCTGGATT
 ACAAGGATGACGACGATAAGGTTTAA

Protein Sequence:

>RC201405 protein sequence
 Red=Cloning site Green=Tags(s)

MASRGARQLKSGSASSGDTAPAADKRELLGSREAGGAHRTEL SGNKAGQVWAPGSAFKCLLSARL
 CAALLSNISDCDEFNYWEPHYLIYGEFQWTEYSPAYAIRSYAYLLLHAWPAAFHARILQTNKILVFY
 FLRCLLAFVSCICELFYKAVCKKFLHVSRLMLAFLVLSGTMFCSSAFLPSSFCMYTTLIAMTGWYMD
 KTSIAVLGVAAGAILGWPFAALGLPIAFDILLVMKHRWKSFFHWSLMALILFLVPVVVIDSYYYGKLVIA
 PLNIVLYNVFTHPGPDLYGTEPWYFYLINGFLNFVAFALALLVLPLTSLMEYLLQRFHVQNLGHPYWL
 LAPMYIWFIIFFIQPHKEERFLFPVYPLIICLGAVALSALQHSFLYFQKCYHFVQRYRLEHYTVTSNWL
 ALGTVFLFGLLSFSRSVALFRGYHGPLDLYPEFYRIATDPTIHTVPEGRPVNVCVKWEYRFPSSFLLPD
 NWQLQFIPSEFRGQLPKPFAEGPLATRIVPTDMNDQNLLEEPSRYIDISKHYLVLDLTMRETPREPKEYSS
 NKEEWISLAYRPFLDASRSSKLLRAFYPVPLSDQYTVVYNYTILKPRKAKQIRKSSGG

TRTRPLEQKLISEEDLAANDILDYKDDDDKV

Chromatograms: https://cdn.origene.com/chromatograms/mk6576_f08.zip

Restriction Sites: SgfI-MluI

Cloning Scheme:



ACCN: NM_024740

ORF Size: 1854 bp

OTI Disclaimer: The molecular sequence of this clone aligns with the gene accession number as a point of reference only. However, individual transcript sequences of the same gene can differ through naturally occurring variations (e.g. polymorphisms), each with its own valid existence. This clone is substantially in agreement with the reference, but a complete review of all prevailing variants is recommended prior to use. [More info](#)

OTI Annotation: This clone was engineered to express the complete ORF with an expression tag. Expression varies depending on the nature of the gene.

Components: The ORF clone is ion-exchange column purified and shipped in a 2D barcoded Matrix tube containing 10ug of transfection-ready, dried plasmid DNA (reconstitute with 100 ul of water).

Reconstitution Method:

1. Centrifuge at 5,000xg for 5min.
2. Carefully open the tube and add 100ul of sterile water to dissolve the DNA.
3. Close the tube and incubate for 10 minutes at room temperature.
4. Briefly vortex the tube and then do a quick spin (less than 5000xg) to concentrate the liquid at the bottom.
5. Store the suspended plasmid at -20°C. The DNA is stable for at least one year from date of shipping when stored at -20°C.

RefSeq: [NM_024740.2, NP_079016.2](#)

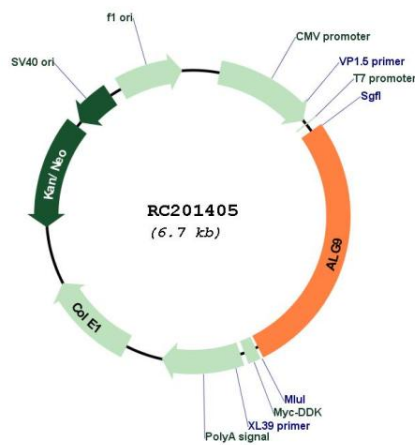
RefSeq Size: 6158 bp

RefSeq ORF: 1857 bp

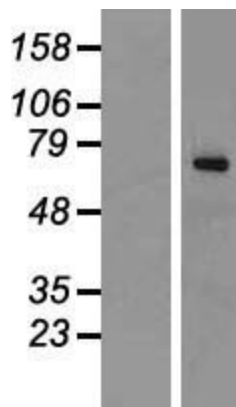
Locus ID: 79796
UniProt ID: [Q9H6U8](#)
Cytogenetics: 11q23.1
Protein Families: Transmembrane
Protein Pathways: Metabolic pathways, N-Glycan biosynthesis
MW: 70.8 kDa

Gene Summary: This gene encodes an alpha-1,2-mannosyltransferase enzyme that functions in lipid-linked oligosaccharide assembly. Mutations in this gene result in congenital disorder of glycosylation type II. Multiple transcript variants encoding different isoforms have been found for this gene. [provided by RefSeq, Dec 2008]

Product images:



Circular map for RC201405



Western blot validation of overexpression lysate (Cat# [LY411087]) using anti-DDK antibody (Cat# [TA50011-100]). Left: Cell lysates from untransfected HEK293T cells; Right: Cell lysates from HEK293T cells transfected with RC201405 using transfection reagent MegaTran 2.0 (Cat# [TT210002]).