

## Product datasheet for **RC201401**

### ZNF420 (NM\_144689) Human Tagged ORF Clone

#### Product data:

Product Type:	Expression Plasmids
Product Name:	ZNF420 (NM_144689) Human Tagged ORF Clone
Tag:	Myc-DDK
Symbol:	ZNF420
Synonyms:	APAK
Mammalian Cell Selection:	Neomycin
Vector:	pCMV6-Entry (PS100001)
E. coli Selection:	Kanamycin (25 ug/mL)



[View online »](#)

**ORF Nucleotide Sequence:**

>RC201401 representing NM\_144689  
 Red=Cloning site Blue=ORF Green=Tags(s)

TTTTGTAATACGACTCACTATAGGGCGGCCGGAATTCGTCGACTGGATCCGGTACCGAGGAGATCTGCC  
 GCC**CGGATCGCC**

ATGGCTCGGAAATTAGTGATGTTACAGGATGTTGCCATTGACTTCTCTCAGGAAGAGTGGGAATGCCTGG  
 ACTCTGCTCAGAGAGATTTGTATAGAGATGTGATGTTGGAGAACTATAGCAACTTGGTATCACTAGACTT  
 GCCTTCAAGGTGTGCAAGTAAGGACTTATCTCCAGAAAAGAACACTTATGAAACAGAATTATCCCAATGG  
 GAAATGAGTGACAGACTTAAAACTGTGATCTTGAAGAGTCCAATTCCAGGGATTATTTGGAAGCCAAAG  
 GCAAGATGGAGAAGCAACAAGAAAATCAGAAGGAATTTTCAGGCAAGGGATGATCATATATGACAAAAT  
 GTCCATTTTCAACCAGCATACTTACTTATCTCAACATTCAAGATGTCATTCTACTGAGAAAACCTATAAA  
 TGTAAGGAATGTGGAAAGCCTTCAGACGAGCCTCACACCTAACACAACATCAAAGTATTCATACTGGT  
 AAAAACCTATGAATGTAAGCAATGCGGGAAGGCCTTTAGTCGTGATTCACAACCTCAGTCTTCATCAGAG  
 ACTTCATACTGGTGAGAAAACCTATGCATGTAAGGAATGTGGAAAGGCCTTTACTCAAAGCTCACAACCT  
 ATTTTACATCATAGAATTCATACTGGTAAAAACCATATAAATGTGAAGAATGTGGGAAAGCCTTTATTC  
 GTAGCTCACAACCTACCCGACATCAAAAAGTTCATACTGGTGAGAAAACCTTATGAATGTAAGAATGTGG  
 GAAGGCCTTTACTCAGAATTCACAACCTTACACTACACCAGAGACTTCATACTGGTGAAAAGCTCTATGAA  
 TGTAAGAATGTAGGAAGTCTTTACTCAGCTCTCACAACCTATTCTGCATAAGAGAATTCATACCGGTG  
 AGAAAACCTATGAATGTAAGGAATGTGGAAAAGCCTTTATTTGTGGCTCACAGCTTTCTCAACATCAGAA  
 AATTCATAATGGGAAAAACCATATGAATGTAAGGAATGTGGAAAGGCCTTTATTCGGGGCTCACTACTG  
 ATGCAACATCAGAGGATTCATACTGGTAAAAACCTATAAATGTGAAGAATGTGGAAAGGCCTTTATCC  
 GTGGCTCACAACCTTACTCAACACCAGAGAATTCACACCAATGAAAAGCCTATGAATGTAAGGAATGTGG  
 AAAGATGTTTAGTCATGGCTCACAACCTTACTCAACATCAGAGAATACACACTGGTGAGAAAACCTATCAA  
 TGTAAGGAATGTGGAAAGCCTTTAATCGTGGCTCACTCCTTACACGACACCAGAGGATTCATACTGGTG  
 AGAAAACCTATGAATGTAAGAATGTGGAAAACCTTTAGTCGTGGCTCAGAACCTTACTCAACATGAGCG  
 AATTCACACAGGTGAGAAAACCTATGAATGTAAGGAATGTGGAAATCTTTATTCGTGGTTCCAGCTT  
 ACTCAACATCAGAGAATCCATACTGGTGAGAAAACCTTATGAATGTAAGAATGTAGAATGGCCTTTACTC  
 AGAGTTCACATCTTTCCCAACATCAAAGACTTCACACTGGTGAGAAAACCTATGTGTGAATGAATGTGG  
 AAAGGCCTTTGCGCGTGGCTTACTACTTATAACAACATCAGAGAATTCATACTGGTGAGAAAACCATATCAA  
 TGTAAGGAATGTGGAAAGCCTTTATTCGTGGTTCACAGTTGACTCAACATCAGCGAATTCACACTGGAG  
 AAAAACCTATGAATGCAAGGAGTGTGGCAAGGCCTTTAGTCATGGCTCTCAGCTTACTCTACATCAGAG  
 AATCCATACTGGTGAGAAAGCCTATGAATGCAGAGAATGTAGAAAAGCCTTTACTCAGAGTTCACATCTT  
 TCTCGGCATCAGAGAATTCATACTGGTGAGAAAACCATATCAATGTAAGGAATGTGGAAAGGCCTTTACTC  
 GTGGTTCACAGCTAACTCAACATCAGAGAATTCATATCAGTGAGAAAATCTTTTGAATATAAGGAATGTGG  
 GATTGACTTTAGTCATGGCTCACAAGTTTACATG

**ACGCGT**ACGCGGCCGCTCGAGCAGAAACTCATCTCAGAAGAGGATCTGGCAGCAAATGATATCCTGGATT  
 ACAAGGATGACGACGATAAGGTTTAA

**Protein Sequence:** >RC201401 representing NM\_144689  
 Red=Cloning site Green=Tags(s)

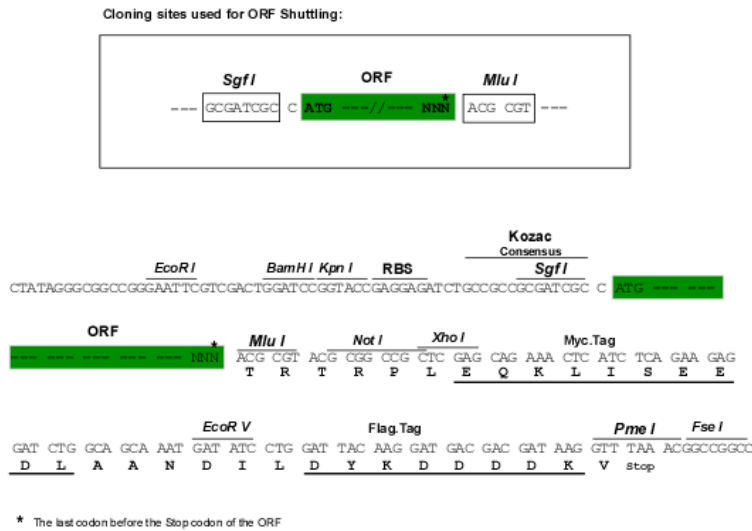
MARKLVMFRDVAIDFSQEEWECLDSAQRDLYRDVMLENYSNLVSLDLPSCASKDLSPEKNTYETELSQW  
 EMSDRLENCDLLEESNSRDYLEAKGKMEKQENQKEYFRQGMIIYDKMSIFNQHTYLSQHSRCHSTTEKPYK  
 CKCEGKAFRRASHLTQHQSIIHTGEKPYECKQCGKAFSRDSQLSLHQLRLHTGEKPYACKCEGKAFQTSSQL  
 ILHHRIIHTGEKPYKCEECGKAFIRSSQLTRHQKVHTGEKPYECKCEGKAFQTNSQLTLHQLRLHTGEKLYE  
 CKECRKVFTQLSQLILHKRIHTGEKPYECKCEGKAFICGSQLSQHQKIHNGEKPYECKCEGKAFIRGSLL  
 MQHQRIHTGEKPYKCEECGKAFIRGSQLTQHQRITHTNEKPYECKCEGKMFSGSQTQHQRITHTGEKPYQ  
 CKCEGKAFNRGSLLTRHQRIHTGEKPYECKCEGKTFSRGSELTQHERIHTGEKPYECKCEGKSFIRGSQ  
 TQHQRITHTGEKPYECKCECRAFTQSSHL SQHQLRLHTGEKPYVCNECGKAFARGLLLIQHQRIHTGEKPYQ  
 CKCEGKAFIRGSQLTQHQRITHTGEKPYECKCEGKAFSGSQTTLHQRITHTGEKPYECRECRKAFQTSSHL  
 SRHQRIHTGEKPYQCKCEGKAFTRGSQLTQHQRITHTSEKSFYEKCEGIDFSHGSQVYM

TRTRPLEQKLISEEDLAANDILDYKDDDDKV

**Chromatograms:** [https://cdn.origene.com/chromatograms/mg4530\\_d11.zip](https://cdn.origene.com/chromatograms/mg4530_d11.zip)

**Restriction Sites:** Sgfl-MluI

**Cloning Scheme:**



**ACCN:** NM\_144689

**ORF Size:** 2064 bp

**OTI Disclaimer:** Due to the inherent nature of this plasmid, standard methods to replicate additional amounts of DNA in E. coli are highly likely to result in mutations and/or rearrangements. Therefore, OriGene does not guarantee the capability to replicate this plasmid DNA. Additional amounts of DNA can be purchased from OriGene with batch-specific, full-sequence verification at a reduced cost. Please contact our customer care team at [custsupport@origene.com](mailto:custsupport@origene.com) or by calling 301.340.3188 option 3 for pricing and delivery.

The molecular sequence of this clone aligns with the gene accession number as a point of reference only. However, individual transcript sequences of the same gene can differ through naturally occurring variations (e.g. polymorphisms), each with its own valid existence. This clone is substantially in agreement with the reference, but a complete review of all prevailing variants is recommended prior to use. [More info](#)

**OTI Annotation:** This clone was engineered to express the complete ORF with an expression tag. Expression varies depending on the nature of the gene.

**Components:** The ORF clone is ion-exchange column purified and shipped in a 2D barcoded Matrix tube containing 10ug of transfection-ready, dried plasmid DNA (reconstitute with 100 ul of water).

**Reconstitution Method:**

1. Centrifuge at 5,000xg for 5min.
2. Carefully open the tube and add 100ul of sterile water to dissolve the DNA.
3. Close the tube and incubate for 10 minutes at room temperature.
4. Briefly vortex the tube and then do a quick spin (less than 5000xg) to concentrate the liquid at the bottom.
5. Store the suspended plasmid at -20°C. The DNA is stable for at least one year from date of shipping when stored at -20°C.

**RefSeq:** [NM\\_144689.5](#)

**RefSeq Size:** 2990 bp

**RefSeq ORF:** 2067 bp

**Locus ID:** 147923

**UniProt ID:** [Q8TAQ5](#)

**Cytogenetics:** 19q13.12

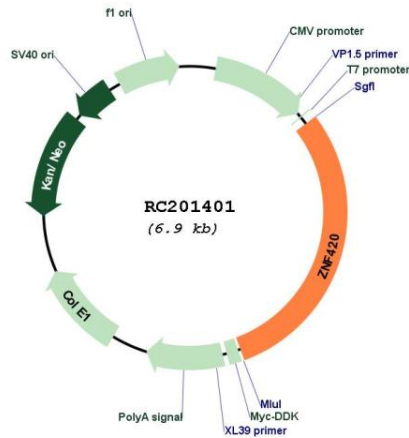
**Domains:** KRAB, zf-C2H2

**Protein Families:** Transcription Factors

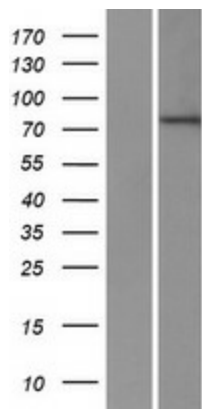
**MW:** 80.1 kDa

**Gene Summary:** The protein encoded by this gene is a KRAB-type zinc finger protein that negatively-regulates p53-mediated apoptosis. Under stress conditions, the encoded protein is phosphorylated by ATM and dissociates from p53, which activates p53 and initiates apoptosis. [provided by RefSeq, Jul 2016]

Product images:



Circular map for RC201401



Western blot validation of overexpression lysate (Cat# [LY408182]) using anti-DDK antibody (Cat# [TA50011-100]). Left: Cell lysates from untransfected HEK293T cells; Right: Cell lysates from HEK293T cells transfected with RC201401 using transfection reagent MegaTran 2.0 (Cat# [TT210002]).