

Product datasheet for RC201398

BMERB1 (NM_033201) Human Tagged ORF Clone

Product data:

Product Type: Expression Plasmids
Product Name: BMERB1 (NM_033201) Human Tagged ORF Clone
Tag: Myc-DDK
Symbol: BMERB1
Synonyms: C16orf45; MINP
Mammalian Cell Selection: Neomycin
Vector: pCMV6-Entry (PS100001)
E. coli Selection: Kanamycin (25 ug/mL)
ORF Nucleotide Sequence: >RC201398 ORF sequence
 Red=Cloning site Blue=ORF Green=Tags(s)

TTTTGTAATACGACTCACTATAGGGCGGCCGGAATTCGTCGACTGGATCCGGTACCGAGGAGATCTGCC
 GCC**CGATCGCC**

ATGGAATTAAAGCAATCTTTGTCCACCCATCTGGAAGCCGAGAAGCCTCTGAGGCGCTATGGGGCGGTGG
 AGGAGACGGCTTGGAAAACGGAGAGACTGGGGAGAAATCAGCTGGACATCATCTCCATGGCGGAGACAAC
 CATGATGCCAGAGGAGATTGAGCTGGAGATGGCAAAAATTCAGCGTCTCCGGGAAGTCTTGGTCCGCCGG
 GAGTCTGAGCTCAGTTTCATGATGGATGACATCCAGCTCTGCAAGGACATCATGGACTTGAAGCAGGAGC
 TGCAGAACTTGGTCGCCATCCAGAAAAAGAAAAACCAAAGTGCAGAAGCAGAGAGAGGATGAGCTAAT
 CCAGAAGATCCACAACTGGTGCAGAAGAGAGACTTCTGGTGGACGATCCGGAGGTGAGCGGTTAAGG
 GAGCAAGAAGAAGACAAGGAAATGGCTGATTTCTGAGAATCAAGTAAAACCTTAGACAAAGTAACCA
 AATCTCCAGCCAGCTCCCGGCAGAGAAGAAAGCAGAGCCCCACCTAGCAAGCCACGGTGGCCAAAGAC
 GGGGCTGGCACTGATCAAGGATTGTTGCGGGGCCACCCAGTGAACATCATG

ACGCGTACGCGGCCGCTCGAGCAGAACTCATCTCAGAAGAGGATCTGGCAGCAATGATATCCTGGATT
 ACAAGGATGACGACGATAAGGTTTAA

Protein Sequence: >RC201398 protein sequence
 Red=Cloning site Green=Tags(s)

MELKQSLSTHLEAEKPLRRYGAVEETAWKTERLGRNQLDIISMAETMMPEEIELEMAKIQRLREVLVRR
 ESELRFMDDIQLCKDIMDLKQELQNLVAIPEKEKTKLQKQREDELIQKIHKLVQKRDFLVDDAEVERLR
 EQEEDKEMADFLRIKLPDKVTKSPASSRAEKKAEPSPKPTVAKTGLALIKDCCGATQCNIM

TRTRPLEQKLISEEDLAANDILDYKDDDDKV



Chromatograms: https://cdn.origene.com/chromatograms/mk6557_g04.zip

Restriction Sites: SgfI-MluI

Cloning Scheme:



ACCN: NM_033201

ORF Size: 612 bp

OTI Disclaimer: The molecular sequence of this clone aligns with the gene accession number as a point of reference only. However, individual transcript sequences of the same gene can differ through naturally occurring variations (e.g. polymorphisms), each with its own valid existence. This clone is substantially in agreement with the reference, but a complete review of all prevailing variants is recommended prior to use. [More info](#)

OTI Annotation: This clone was engineered to express the complete ORF with an expression tag. Expression varies depending on the nature of the gene.

Components: The ORF clone is ion-exchange column purified and shipped in a 2D barcoded Matrix tube containing 10ug of transfection-ready, dried plasmid DNA (reconstitute with 100 ul of water).

Reconstitution Method:

1. Centrifuge at 5,000xg for 5min.
2. Carefully open the tube and add 100ul of sterile water to dissolve the DNA.
3. Close the tube and incubate for 10 minutes at room temperature.
4. Briefly vortex the tube and then do a quick spin (less than 5000xg) to concentrate the liquid at the bottom.
5. Store the suspended plasmid at -20°C. The DNA is stable for at least one year from date of shipping when stored at -20°C.

RefSeq: [NM_033201.3](#)

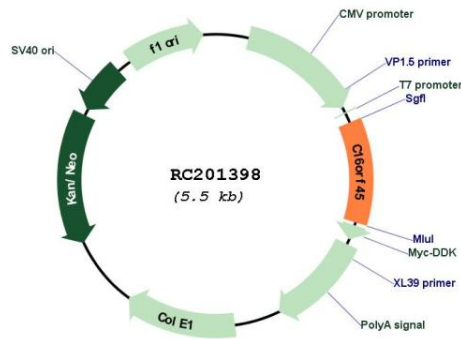
RefSeq Size: 2234 bp

RefSeq ORF: 615 bp

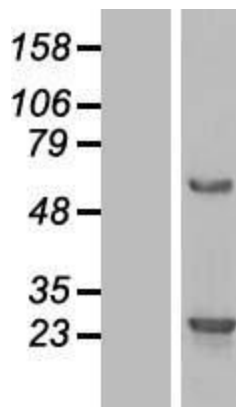
Locus ID: 89927

UniProt ID: [Q96MC5](#)
 Cytogenetics: 16p13.11
 MW: 23.7 kDa

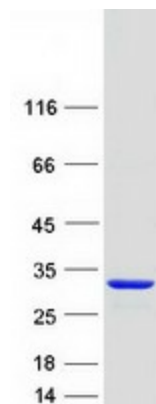
Product images:



Circular map for RC201398



Western blot validation of overexpression lysate (Cat# [LY409626]) using anti-DDK antibody (Cat# [TA50011-100]). Left: Cell lysates from untransfected HEK293T cells; Right: Cell lysates from HEK293T cells transfected with RC201398 using transfection reagent MegaTran 2.0 (Cat# [TT210002]).



Coomassie blue staining of purified BMERB1 protein (Cat# [TP301398]). The protein was produced from HEK293T cells transfected with BMERB1 cDNA clone (Cat# RC201398) using MegaTran 2.0 (Cat# [TT210002]).