

Product datasheet for RC201389

YIPF2 (NM_024029) Human Tagged ORF Clone

Product data:

Product Type:	Expression Plasmids
Product Name:	YIPF2 (NM_024029) Human Tagged ORF Clone
Tag:	Myc-DDK
Symbol:	YIPF2
Synonyms:	FinGER2
Mammalian Cell Selection:	Neomycin
Vector:	pCMV6-Entry (PS100001)
E. coli Selection:	Kanamycin (25 ug/mL)
ORF Nucleotide Sequence:	>RC201389 ORF sequence Red=Cloning site Blue=ORF Green=Tags(s)

TTTTGTAATACGACTCACTATAGGGCGGCCGGAATTCGTCGACTGGATCCGGTACCGAGGAGATCTGCC
GCC**CGATCGCC**

ATGGCATCGGCCGACGAGCTGACCTTCCATGAATTCGAGGAGGCCACTAATCTTCTGGCTGACACCCAG
ATGCAGCCACCACCAGCAGAAGCGATCAGCTGACCCACAAGGGCACGTGGCTGTGGCCGTGGGCTCAGG
TGGCAGCTATGGAGCCGAGGATGAGGTGGAGGAGGAGAGTGACAAGGCCGCGCTCCTGCAGGAGCAGCAG
CAGCAGCAGCAGCCGGATTCTGGACCTCAGCTACTATCAGAGCTTCTTTGACGTGGACACCTCACAGG
TCCTGGACCGGATCAAAGGCTCACTGCTGCCCCGGCCTGGCCACAACCTTTGTGCGGCACCATCTGCGGAA
TCGGCCGGATCTGTATGGCCCTTCTGGATCTGTGCCACGTTGGCCTTTGTCTGGCCGTCAGTGGCAAC
CTGACGCTGGTGCTGGCCAGAGGAGGGACCCCTCCATCCACTACAGCCCCAGTTCACAAAGGTGACCG
TGGCAGGCATCAGCATCTACTGCTATGCGTGGCTGGTGGCCCTGGCCCTGTGGGGCTTCTCGCGTGGCG
CAAGGGTGTCCAGGAGCGCATGGGGCCCTACACCTTCTGGAGACTGTGTGCATCTACGGTACTCCCTC
TTTGTCTTCATCCCATGGTGGTCTGTGGTCCATCCCTGTGCCTGGCTGACAGTGGCTCTTTGGGGCGC
TGGCCCTGGGCTGTGAGCCGCGGGCTGGTATCACCTCTGGCCGTTGGTCCGTGAGGACACCAGGCT
GGTGGCCACAGTGTGCTGTCCGTGGTCTGTGCTCCACGCCCTCCTGGCCATGGGCTGTAAGTTGTAC
TTCTTCAGTCTGCTGCCCGGAGAAGTGGCTCCTCCTCCCAAATCACATCTCTGCCCTCAAACATCG
CGCTGTCCCCTACCTTGGCCGAGTCCCTGGCCCCCTCC

ACGCGTACGCGGCCGCTCGAGCAGAACTCATCTCAGAAGAGGATCTGGCAGCAAATGATATCCTGGATT
ACAAGGATGACGACGATAAGGTTTAA



[View online »](#)

Protein Sequence: >RC201389 protein sequence
Red=Cloning site Green=Tags(s)

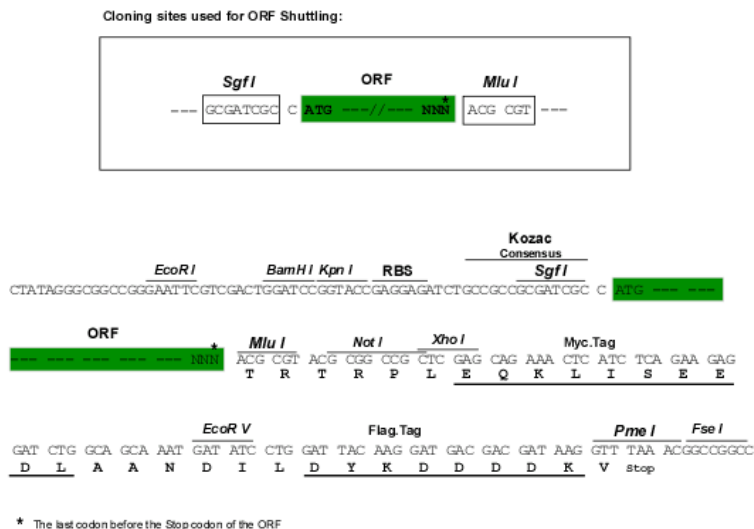
MASADELTFHEFEEATNLLADTPDAATTSRSDQLTPQGHVAVAVGSGGSYGAEDEVEEESDKAALLQEQQ
 QQQQPGFWTFSSYYQSFFDVDTSQLVDRIKGSLLPRPGHNFVRHHLRNRPDLYGPFWICATLAFVLAVTGN
 LTLVLAQRDPDSIHYSPOFHKVTVAGISIYCYAWLVPLALWGFRLWRKGVQERMGPYTFLETVCIIYGYSL
 FVFIPMVVLWVIPVWLQWLFALALGLSAAGLVFTLWPVVREDTRLVATVLLSVVLLHALLAMGCKLY
 FFQSLPPENVAPPPQITSLPSNIALSPTLPQSLAPS

TRTRPLEQKLISEEDLAANDILDYKDDDDKV

Chromatograms: https://cdn.origene.com/chromatograms/mk6722_d09.zip

Restriction Sites: SgfI-MluI

Cloning Scheme:



ACCN: NM_024029

ORF Size: 948 bp

OTI Disclaimer: The molecular sequence of this clone aligns with the gene accession number as a point of reference only. However, individual transcript sequences of the same gene can differ through naturally occurring variations (e.g. polymorphisms), each with its own valid existence. This clone is substantially in agreement with the reference, but a complete review of all prevailing variants is recommended prior to use. [More info](#)

OTI Annotation: This clone was engineered to express the complete ORF with an expression tag. Expression varies depending on the nature of the gene.

Components: The ORF clone is ion-exchange column purified and shipped in a 2D barcoded Matrix tube containing 10ug of transfection-ready, dried plasmid DNA (reconstitute with 100 ul of water).

Reconstitution Method:

1. Centrifuge at 5,000xg for 5min.
2. Carefully open the tube and add 100ul of sterile water to dissolve the DNA.
3. Close the tube and incubate for 10 minutes at room temperature.
4. Briefly vortex the tube and then do a quick spin (less than 5000xg) to concentrate the liquid at the bottom.
5. Store the suspended plasmid at -20°C. The DNA is stable for at least one year from date of shipping when stored at -20°C.

RefSeq: [NM_024029.3](#), [NP_076934.1](#)

RefSeq Size: 1554 bp

RefSeq ORF: 951 bp

Locus ID: 78992

UniProt ID: [Q9BWQ6](#)

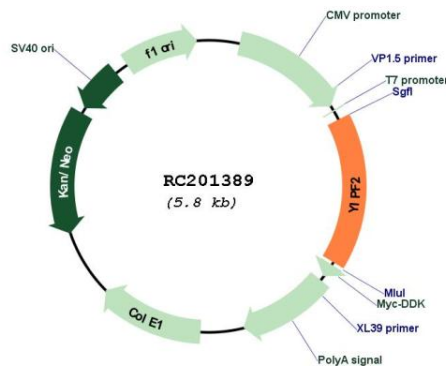
Cytogenetics: 19p13.2

Domains: Yip1

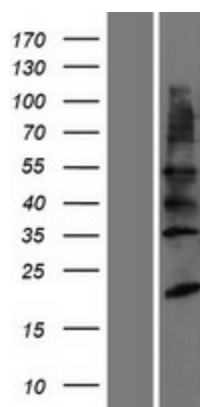
Protein Families: Transmembrane

MW: 35.2 kDa

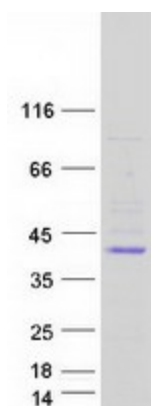
Product images:



Circular map for RC201389



Western blot validation of overexpression lysate (Cat# [LY411407]) using anti-DDK antibody (Cat# [TA50011-100]). Left: Cell lysates from untransfected HEK293T cells; Right: Cell lysates from HEK293T cells transfected with RC201389 using transfection reagent MegaTran 2.0 (Cat# [TT210002]).



Coomassie blue staining of purified YIPF2 protein (Cat# [TP301389]). The protein was produced from HEK293T cells transfected with YIPF2 cDNA clone (Cat# RC201389) using MegaTran 2.0 (Cat# [TT210002]).