

Product datasheet for **RC201386**

SESN2 (NM_031459) Human Tagged ORF Clone

Product data:

Product Type:	Expression Plasmids
Product Name:	SESN2 (NM_031459) Human Tagged ORF Clone
Tag:	Myc-DDK
Symbol:	SESN2
Synonyms:	HI95; SES2; SEST2
Mammalian Cell Selection:	Neomycin
Vector:	pCMV6-Entry (PS100001)
E. coli Selection:	Kanamycin (25 ug/mL)



[View online »](#)

ORF Nucleotide Sequence:

>RC201386 ORF sequence
 Red=Cloning site Blue=ORF Green=Tags(s)

TTTTGTAATACGACTCACTATAGGGCGGCCGGAATTCGTCGACTGGATCCGGTACCGAGGAGATCTGCC
 GCC**CGGATCGCC**

ATGATCGTGGCGACTCCGAGTGCCGCGCAGAGCTCAAGGACTACCTGCGGTTCCGCCCGGGCGGCGTCCG
 GCGACTCGGGCCCGGAGAGGAGCAGAGGGAGAGCCGGGCTCGGCGAGGCCCTCGAGGGCCAGCGCCTT
 CATCCCCGTGGAGGAGTCTTCGGGAGGGGGCTGAGAGCCTCGAGCAGCACCTGGGGCTGGAGGCACTG
 ATGTCCTCTGGGCGAGTAGACAACCTGGCAGTGGTATGGGCTGCACCCTGACTACTTTACCAGCTTCT
 GGGCCTGCACTACCTGCTGCTGCACACGGATGGTCCCTTGCCAGCTCCTGGCGCCACTACATTGCCAT
 CATGGCTGCCGCCGCCATCAGTGTCTTACCTGGTAGGCTCCACATGGCCGAGTTTCTGCAGACTGGT
 GGTGACCCTGAGTGGCTGCTGGGCTCCACGGGCCCCGAGAAGCTGCGCAAACCTAGCGAGATCAACA
 AGTTGCTGGCGCATCGGCATGGCTCATACCAAGGAACACATCCAGGCCTTGCTGAAGACCGGCGAGCA
 CACTTGGTCCCTGGCCGAGCTATTCAGGCTCTGGTCTGCTCACCCACTGCCACTCGCTCTCTCTCTTC
 GTGTTTGGCTGTGGCATCCTCCCTGAGGGGGATGCAGATGGCAGCCCTGCCCCAGGCACCTACACCCC
 CTAGTGAACAGAGCAGCCCCCAAGCAGGGACCCGTTGAACAACCTCTGGGGGCTTTGAGTCTGCCCGCA
 CGTGGAGGCGCTGATGGAGCGCATGCAGCAGCTGCAGGAGAGCCTGCTGCGGGATGAGGGGACGTCACG
 GAGGAGATGGAGAGCCGCTTTGAGCTGGAGAAGTCAGAGAGCCTGCTGGTGACCCCTCAGCTGACATCC
 TGGAGCCCTCTCCACACCAGACATGCTGTGCTTTGTGGAAGACCCTACTTTGCGATATGAGGACTTAC
 TCGGAGAGGGGCTCAGGCACCCCTACCTCCGGGCCAGGATTATACCTGGGAAGACCATGGCTACTCG
 CTGATCCAGCGGCTTTACCCTGAGGGTGGGAGCTGCTGGATGAGAAGTCCAGGCAGCCTATAGCCTCA
 CCTACAATACCATCGCCATGCACAGTGGTGGACACCTCCGTGCTCCGAGGCCATCTGGAACATAT
 CCACTGCGTCTTTGGCATCAGATATGATGACTATGATTATGGGGAGGTGAACCAGCTCCTGGAGCGGAAC
 CTAAGGTCTATATCAAGACAGTGGCCTGCTACCCAGAGAAGACCACCCGAAGAATGTACAACTCTTCT
 GGAGGCACTTCCGCCACTCAGAGAAGGTCCACGTGAACCTGCTGCTCCTGGAGGCGCGCATGCAAGCCGC
 TCTGCTGTACGCCCTCCGTGCCATCACCCGCTACATGACC

ACGCGTACGCGGCCGCTCGAGCAGAAACTCATCTCAGAAGAGGATCTGGCAGCAAATGATATCCTGGATT
 ACAAGGATGACGACGATAAGGTTTAA

Protein Sequence:

>RC201386 protein sequence
 Red=Cloning site Green=Tags(s)

MIVADSECRALKDYLRFAPGGVGDSPGEEQRESRARRGPRGPSAFIPVEEVLREGAESLEQHLGLEAL
 MSSGRVDNLAVVMGLHPDYFTSFWRHLHYLLHTDGLASSWRHYIAIMAAARHQCSYLVGSHMAEFLQTG
 GDPEWLLGLHRAPEKLRKLSEINKLLAHRPWLITKEHIQALLKTGEHTWSLAELIQALVLLTHCHSLSSF
 VFGCGILPEGDADGSPAPQAPTPPSEQSSPPSRDPLNNSGGFESARDVEALMERMQQLQESLLRDEGTSQ
 EEMESRFELEKSESLLVTPSADILEPSHPDMLCFVEDPTFGYEDFTRRGAQAPTFRAQDYTWEDHGYS
 LIQRLYPEGGQLLDEKFAQAYSLEYNTIAMHSGVDTSVLRRAIWNYIHCVFIRYDDYDYGEVNQLLERN
 LKVIYIKTVACYPEKTRRMYNLFWRHRHSEKVVHVNLLLLLEARMQAALLYALRAITRYMT

TRTRPLEQKLISEEDLAANDILDYKDDDDKV

Chromatograms:

https://cdn.origene.com/chromatograms/mk6153_f10.zip

Restriction Sites:

Sgfl-Mlul

Cloning Scheme:


ACCN: NM_031459

ORF Size: 1440 bp

OTI Disclaimer: The molecular sequence of this clone aligns with the gene accession number as a point of reference only. However, individual transcript sequences of the same gene can differ through naturally occurring variations (e.g. polymorphisms), each with its own valid existence. This clone is substantially in agreement with the reference, but a complete review of all prevailing variants is recommended prior to use. [More info](#)

OTI Annotation: This clone was engineered to express the complete ORF with an expression tag. Expression varies depending on the nature of the gene.

Components: The ORF clone is ion-exchange column purified and shipped in a 2D barcoded Matrix tube containing 10ug of transfection-ready, dried plasmid DNA (reconstitute with 100 ul of water).

- Reconstitution Method:**
1. Centrifuge at 5,000xg for 5min.
 2. Carefully open the tube and add 100ul of sterile water to dissolve the DNA.
 3. Close the tube and incubate for 10 minutes at room temperature.
 4. Briefly vortex the tube and then do a quick spin (less than 5000xg) to concentrate the liquid at the bottom.
 5. Store the suspended plasmid at -20°C. The DNA is stable for at least one year from date of shipping when stored at -20°C.

Note: Plasmids are not sterile. For experiments where strict sterility is required, filtration with 0.22um filter is required.

RefSeq: [NM_031459.5](#)

RefSeq Size: 3547 bp

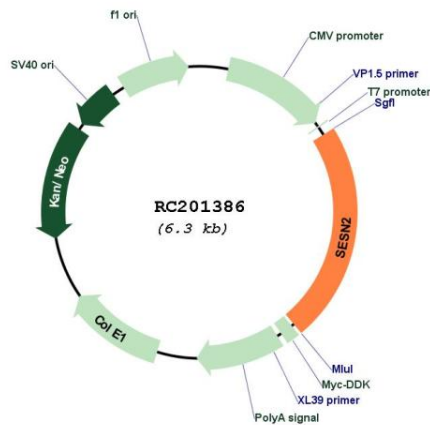
RefSeq ORF: 1443 bp

Locus ID: 83667

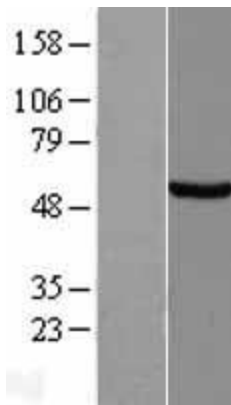
UniProt ID: [P58004](#)
Cytogenetics: 1p35.3
Domains: PA26
Protein Pathways: p53 signaling pathway
MW: 54.5 kDa

Gene Summary: This gene encodes a member of the sestrin family of PA26-related proteins. The encoded protein may function in the regulation of cell growth and survival. This protein may be involved in cellular response to different stress conditions. [provided by RefSeq, Jul 2008]

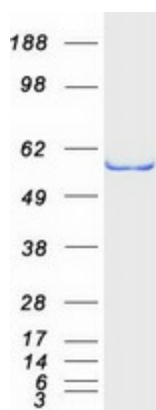
Product images:



Circular map for RC201386



Western blot validation of overexpression lysate (Cat# [LY403117]) using anti-DDK antibody (Cat# [TA50011-100]). Left: Cell lysates from untransfected HEK293T cells; Right: Cell lysates from HEK293T cells transfected with RC201386 using transfection reagent MegaTran 2.0 (Cat# [TT210002]).



Coomassie blue staining of purified SESN2 protein (Cat# [TP301386]). The protein was produced from HEK293T cells transfected with SESN2 cDNA clone (Cat# RC201386) using MegaTran 2.0 (Cat# [TT210002]).