

Product datasheet for **RC201385**

CDCA8 (NM_018101) Human Tagged ORF Clone

Product data:

Product Type:	Expression Plasmids
Tag:	Myc-DDK
Symbol:	CDCA8
Synonyms:	BOR; BOREALIN; DasraB; MESRGP
Mammalian Cell Selection:	Neomycin
Vector:	pCMV6-Entry (PS100001)
E. coli Selection:	Kanamycin (25 ug/mL)
ORF Nucleotide Sequence:	>RC201385 ORF sequence Red=Cloning site Blue=ORF Green=Tags(s)

TTTTGTAATACGACTCACTATAGGGCGGCCGGAATTCGTCGACTGGATCCGGTACCGAGGAGATCTGCC
 GCC**CGATCGCC**

ATGGCTCCTAGGAAGGGCAGTAGTCGGGTGGCCAAGACCAACTCCTTACGGAGGCGGAAGCTCGCCTCCT
 TTCTGAAAGACTTCGACCGTGAAGTGAAATACGAATCAAGCAAATTGAGTCAGACAGGCAGAACCTCCT
 CAAGGAGGTGGATAACCTCTACAACATCGAGATCCTGCGGCTCCCAAGGCTCTGCGCGAGATGAAGTGG
 CTTGACTACTTCGCCCTTGGAGGAAACAACAGGCCCTGGAAGAGGCGGCAACAGCTGACCTGGATATCA
 CCGAAATAACAACTAACAGCAGAAGCTATTAGACACCCCTGAAATCTGCCAAACACGAAAGGTAAT
 ACAGGTAGATGAAATGATAGTGGAAGAGGAAGAAGAAGAAATGAACGTAAGAATCTTCAAACCTGCA
 AGAGTCAAAGGTGTCTCCATCCAAGAAGAGAACTCAGTCCATACAAGGAAAAGGAAAAGGAAAAGGT
 CAAGCCGTGCTAACACTGTTACCCAGCCGTGGGCCGATTGGAGGTGTCCATGGTCAAACCAACTCCAGG
 CCTGACACCCAGGTTTGACTCAAGGCTCTCAAGACCCCTGGCCTGCGTACTCCAGCAGCAGGAGAGCGG
 ATTTACAACATCTCAGGGAATGGCAGCCCTCTTGCTGACAGCAAAGAGATCTTCTCACTGTGCCAGTGG
 GCGGCGGAGAGCCTGCGATTATTGGCCAGTGACTTGCAGAGGCACAGTATTGCCAGCTGGATCCAGA
 GGCCTTGGGAAACATTAAGAAGCTCTCAACCGTCTCGCCCAATCTGCAGCAGCATACGGACCCACAAA

ACGCGTACGCGGCCGCTCGAGCAGAACTCATCTCAGAAGAGGATCTGGCAGCAAATGATATCCTGGATT
 ACAAGGATGACGACGATAAGGTTTAA


[View online »](#)

Protein Sequence: >RC201385 protein sequence
Red=Cloning site Green=Tags(s)

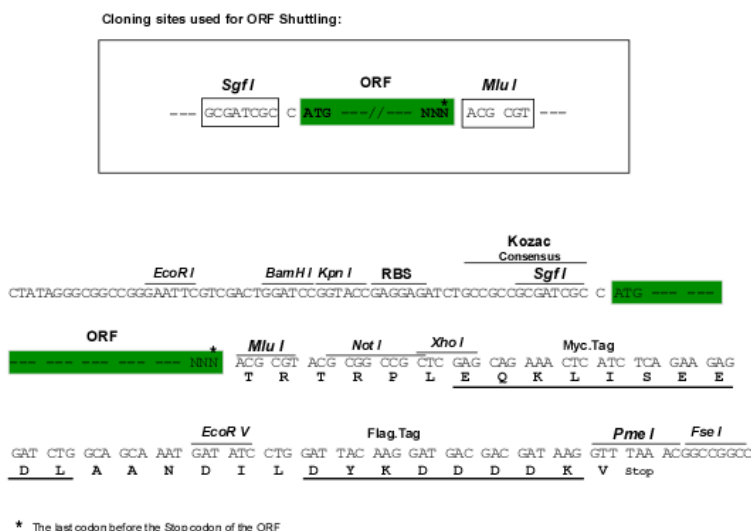
MAPRKGSSRVAKTNSLRRLRRKLASF LKDFDREVEIRIKQIESDRQNLLKEVDNL YNIEILRLPKALREMNW
LDYFALGGNKQALEEAATADLDITEINKLTAEAIQTPLKSAKTRKVIQVDEMIVEEEEEENERKNLQTA
RVKRCPPSKKRTQSIQKGKGKRSSRANTVTPAVGRLEVSMVKPTPLTPRFDSEVFKTPGLRTPAAGER
IYNISGNGSPLADSKEIFLTPVVGGSRLRLASDLORHSIAOLDPEALGNIKKL SNRLAQCSSIRTHK

TRTRPLEOKLISEEDLAANDILDYKDDDDKV

Chromatograms: https://cdn.origene.com/chromatograms/mk6144_c11.zip

Restriction Sites: Sgfl-MluI

Cloning Scheme:



ACCN: NM 018101

ORF Size: 840 bp

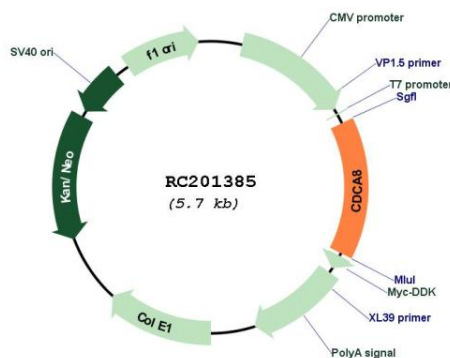
OTI Disclaimer: The molecular sequence of this clone aligns with the gene accession number as a point of reference only. However, individual transcript sequences of the same gene can differ through naturally occurring variations (e.g. polymorphisms), each with its own valid existence. This clone is substantially in agreement with the reference, but a complete review of all prevailing variants is recommended prior to use. [More info](#)

OTI Annotation: This clone was engineered to express the complete ORF with an expression tag. Expression varies depending on the nature of the gene.

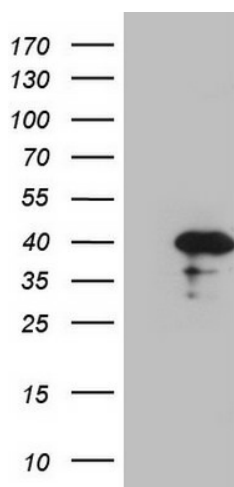
Components: The ORF clone is ion-exchange column purified and shipped in a 2D barcoded Matrix tube containing 10ug of transfection-ready, dried plasmid DNA (reconstitute with 100 ul of water).

Reconstitution Method:	<ol style="list-style-type: none"> 1. Centrifuge at 5,000xg for 5min. 2. Carefully open the tube and add 100ul of sterile water to dissolve the DNA. 3. Close the tube and incubate for 10 minutes at room temperature. 4. Briefly vortex the tube and then do a quick spin (less than 5000xg) to concentrate the liquid at the bottom. 5. Store the suspended plasmid at -20°C. The DNA is stable for at least one year from date of shipping when stored at -20°C.
Note:	Plasmids are not sterile. For experiments where strict sterility is required, filtration with 0.22um filter is required.
RefSeq:	<u>NM_018101.4</u>
RefSeq Size:	2405 bp
RefSeq ORF:	843 bp
Locus ID:	55143
UniProt ID:	<u>Q53HL2</u>
Cytogenetics:	1p34.3
Protein Families:	Druggable Genome
MW:	31.3 kDa
Gene Summary:	This gene encodes a component of the chromosomal passenger complex. This complex is an essential regulator of mitosis and cell division. This protein is cell-cycle regulated and is required for chromatin-induced microtubule stabilization and spindle formation. Alternate splicing results in multiple transcript variants. Pseudogenes of this gene are found on chromosomes 7, 8 and 16. [provided by RefSeq, Apr 2013]

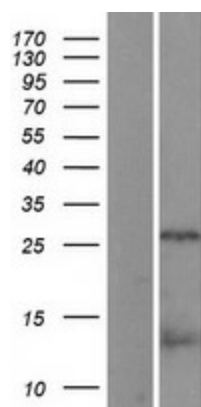
Product images:



Circular map for RC201385



HEK293T cells were transfected with the pCMV6-ENTRY control (Cat# [PS100001], Left lane) or pCMV6-ENTRY CDCA8 (Cat# RC201385, Right lane) cDNA for 48 hrs and lysed. Equivalent amounts of cell lysates (5 ug per lane) were separated by SDS-PAGE and immunoblotted with anti-CDCA8 (Cat# [TA807726])(1:2000). Positive lysates [LY402655] (100ug) and [LC402655] (20ug) can be purchased separately from OriGene.



Western blot validation of overexpression lysate (Cat# [LY402655]) using anti-DDK antibody (Cat# [TA50011-100]). Left: Cell lysates from untransfected HEK293T cells; Right: Cell lysates from HEK293T cells transfected with RC201385 using transfection reagent MegaTran 2.0 (Cat# [TT210002]).