

Product datasheet for RC201384

C2orf24 (CNPPD1) (NM_015680) Human Tagged ORF Clone

Product data:

Product Type:	Expression Plasmids
Product Name:	C2orf24 (CNPPD1) (NM_015680) Human Tagged ORF Clone
Tag:	Myc-DDK
Symbol:	C2orf24
Synonyms:	C2orf24; CGI-57
Mammalian Cell Selection:	Neomycin
Vector:	pCMV6-Entry (PS100001)
E. coli Selection:	Kanamycin (25 ug/mL)
ORF Nucleotide Sequence:	>RC201384 ORF sequence Red=Cloning site Blue=ORF Green=Tags(s)

TTTTGTAATACGACTCACTATAGGGCGCCGGGAATTCGTCGACTGGATCCGGTACCGAGGAGATCTGCC
GCC**CGATCGC**C

ATGGACCTGACCGGGCTCCTGCTGGACGAAGAAGGCACCTTCTCCCTCGCCGGCTTCCAGGACTTCAGT
TCCTCCCAGGACACCAGAAGCTGAGTGCCCGGATCCGAAGGAGGCTCTACTATGGCTGGGACTGGGAAGC
CGACTGTAGCCTGGAGGAGCTCTCCAGCCCGTGGCAGACATTGCTGTGCAACTGCTCCAGAAGGCAGCC
CCCAGCCCTATTCGCCGACTCCAGAAGAAATACGTAGCTCATGTGTCCCGGGAGGCATGCATCTCCCAT
GTGCTATGATGTGGCTCTGGTGTACATTGAACGGCTCCGGCACCGAAACCCAGACTACTGCAGCATGT
GTATCCTCTGACTTGTTCCTGATCTCCATGATGGTGGCCAGTAAGTACCTCTATGATGAAGGGGAGGAG
GAGGAGGTCTTCAACGACGAATGGGAGCTGTGGGGGTGTGGCCGTGCCACTCTCAATGCCTTGAGA
GGGGCTTCTGAGTGCCATGGATTGGCATCTCTACACTGACCCTCGGGAGATCTTTGAGGTGCTGAGCTG
GTTGGAGAGCTGTGTGGCTGAGCAGCAGGGACGGTGGCGAGGCTGGTACACCTACACAGACCTGTGTGTG
CTGCTGGAGCAGCCGACCTGGCAGTTGGCCCTGGGCTCCCTCTGCCAGCGGCTGGTAAAGCTGTCTTGCC
TGTTAGCTGTGGCATATGTGAGCAGTGTGGCCCTGGCTGTGGCATCGGTGGCCGTAATACATCAGTCTTT
GGGGCTGTCTGCACCCCTACACCTGGCCCGCTGACCTTGACTGACCTCCCGTTGCCTCCTGGAGCCC
TGACATACCTTCTGTGCCACAATGCCGTGCCGTCTCCCGCTAATGTCTCCAGCTGCCGGAAGGCAGCATGG
GGCTGCGGTCACTCTGGGGCAGTCTTCTGGCCTCACTGACTCTCCACCATTCCTCCCCAGACCCCCC
TGCCCTCCCACTCTTCTCATAACTGCCACCTTTGCCAGAAGCTCCAGAGAGACTCCCCAACCTGCCAT
GCCTGCCTCCACCCCAACCGTACAGTCCCACTGCGCTGTCCAGCCCTGGTACCATACCTATGGCCTGG
CTCCCCCTGGCCTTGAGCCCGGTGCCCTTTCACTTCTCAGCCTCAGCAATGTTCCCTTTTCAGTGT
CATGGAGCTGGCTCGCCTCAAGTCTTTCGTTTTCCAGGC

ACGGTACGCGGCCGCTCGAGCAGAACTCATCTCAGAAGAGGATCTGGCAGCAATGATATCCTGGATT
ACAAGGATGACGACGATAAGGTTTAA



[View online »](#)

Protein Sequence: >RC201384 protein sequence
Red=Cloning site Green=Tags(s)

MDLTGLLLDEEGTFLAGFQDFTLPGHQKLSARIRRRLLYYGWDWEADCSLEELSSPVADIPELLQKAA
 PSPIRRLLQKKYVAHVSREACISPCAMMLALVYIERLRHRNPDYLQHVSSDLFLISMVASKYLYDEGEE
 EEVFNDWEWAAGGVAVPTLNALERGFLSAMDWHLYTDPREIFEVLSWLESCVAEQGRWRGWYTYDLCV
 LLEQPTWQLALGSLCQRLVKLSCLLAVAYVSSVALAVASVAVIHQSLGLSCTPTPGPPDLGLTSRCLLEP
 CIPSPVQCLPSPANVSSCLEGSMGLRSLWGSLLASLTPPPLPPPDPAPPPTLLHNCHLCQKLRDSPTCH
 ACLHPNRTVPTALSSPWYHTYGLAPPWPSPVPLSLPQPQQCSLFSVMELARLKSFFVPG

TRTRPLEQKLISEEDLAANDILDYKDDDDKV

Chromatograms: https://cdn.origene.com/chromatograms/mk6419_h03.zip

Restriction Sites: SgfI-MluI

Cloning Scheme:



ACCN: NM_015680

ORF Size: 1230 bp

OTI Disclaimer: The molecular sequence of this clone aligns with the gene accession number as a point of reference only. However, individual transcript sequences of the same gene can differ through naturally occurring variations (e.g. polymorphisms), each with its own valid existence. This clone is substantially in agreement with the reference, but a complete review of all prevailing variants is recommended prior to use. [More info](#)

OTI Annotation: This clone was engineered to express the complete ORF with an expression tag. Expression varies depending on the nature of the gene.

Components: The ORF clone is ion-exchange column purified and shipped in a 2D barcoded Matrix tube containing 10ug of transfection-ready, dried plasmid DNA (reconstitute with 100 ul of water).

Reconstitution Method:

1. Centrifuge at 5,000xg for 5min.
2. Carefully open the tube and add 100ul of sterile water to dissolve the DNA.
3. Close the tube and incubate for 10 minutes at room temperature.
4. Briefly vortex the tube and then do a quick spin (less than 5000xg) to concentrate the liquid at the bottom.
5. Store the suspended plasmid at -20°C. The DNA is stable for at least one year from date of shipping when stored at -20°C.

RefSeq: [NM_015680.3](#), [NP_056495.2](#)

RefSeq Size: 2100 bp

RefSeq ORF: 1233 bp

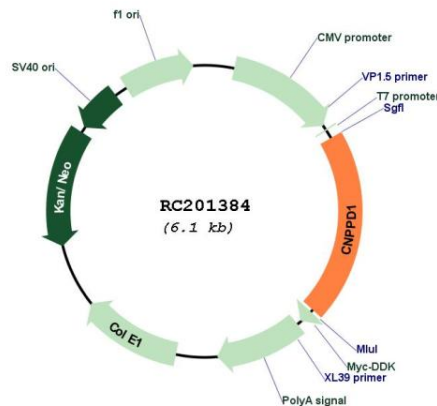
Locus ID: 27013

UniProt ID: [Q9BV87](#)

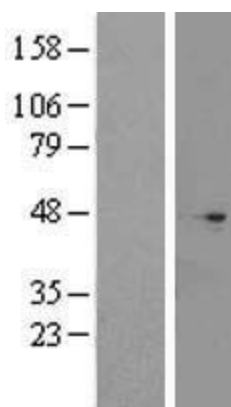
Cytogenetics: 2q35

MW: 45.4 kDa

Product images:



Circular map for RC201384



Western blot validation of overexpression lysate (Cat# [LY414409]) using anti-DDK antibody (Cat# [TA50011-100]). Left: Cell lysates from untransfected HEK293T cells; Right: Cell lysates from HEK293T cells transfected with RC201384 using transfection reagent MegaTran 2.0 (Cat# [TT210002]).