

Product datasheet for **RC201381**

MCPIP1 (ZC3H12A) (NM_025079) Human Tagged ORF Clone

Product data:

Product Type:	Expression Plasmids
Product Name:	MCPIP1 (ZC3H12A) (NM_025079) Human Tagged ORF Clone
Tag:	Myc-DDK
Symbol:	MCPIP1
Synonyms:	dj423B22.1; MCPIP; MCPIP-1; MCPIP1; Reg1
Mammalian Cell Selection:	Neomycin
Vector:	pCMV6-Entry (PS100001)
E. coli Selection:	Kanamycin (25 ug/mL)



[View online »](#)

ORF Nucleotide Sequence:

>RC201381 representing NM_025079
 Red=Cloning site Blue=ORF Green=Tags(s)

TTTTGTAATACGACTCACTATAGGGCGGCCGGAATTCGTCGACTGGATCCGGTACCGAGGAGATCTGCC
 GCC**CGGATCGCC**

ATGAGTGGCCCTGTGGAGAGAAGCCTGTCTGGAAGCCAGCCCACCATGAGTCTGTGGGAATTTGAGG
 ACAGCCACAGCCGTCAGGGCACCCCAAGGCCGGGTCAAGAGCTGGCCGCTGAGGAGGCCTCGGCCCTGGA
 ACTGCAGATGAAGGTGGACTTCTCCGGAAGCTGGGCTATTCATCCACGGAGATCCACAGCGTCCTGCAG
 AAGCTGGGCGTCCAGGCAGACACCAACACGGTGTGGGTGAGCTGGTGAACACGGGACAGCCACCGAGC
 GGGAGCGCCAGACCTCACCGGACCCCTGCCCTCAGCTCCCTCTAGTCCCAGCGGGTGGTGGCACCCCTAA
 GGCTCCCAACCTGGAGCCTCCACTCCCAGAAGAGGAAAAGGAGGGCAGCGACCTGAGACCAGTGGTCATC
 GATGGGAGCAACGTGGCCATGAGCCATGGGAACAAGGAGGTCTTCTCCTGCCGGGCATCCTGCTGGCAG
 TGAAGTGGTTTCTGGAGCGGGCCACACAGACATCACAGTGTGGTCCATCCTGGAGGAAGGAGCAGCC
 TCGGCCCGACGTGCCATCACAGACCAGACATCCTGCGGGAACGGAGAAGAAGATCCTGGTGTTC
 ACACCATCACGACGCGTGGGTGGCAAGCGGGTGGTGTGCTATGACGACAGATTCATTGTGAAGCTGGCCT
 ACGAGTCTGACGGGATCGTGGTTTCCAACGACACATACCGTGACCTCAAAGGCGAGCGGCAGGAGTGAA
 GCGCTTATCGAGGAGCGGCTGCTCATGTACTCCTTCGTCGAATGACAAGTTTATGCCCCCTGATGACCCA
 CTGGGCCCGGCACGGGCCAGCCTGGACAACCTCCTGCGTAAGAAGCCACTCACTTTGGAGCACAGGAAGC
 AGCCGTGTCCCTATGGAAGGAAATGCACCTATGGGATCAAGTGGCGATTCTTCCACCCAGAGCGGCCAAG
 CTGCCCCAGCGCTCTGTGGCAGATGAGCTCCGTGCCAATGCTCTCCTCTACCCCCAGAGCCCAAGC
 AAGGACAAAAATGGCCGGCGCCCTCACCTTCATCCCAGTCCAGCTCTCTGCTAACAGAGAGTGAGCAGT
 GCAGCTGGATGGGAAGAAGCTGGGGGCCAGGCATCCCAGGGTCCCAGCAAGAGGGTCTAACACAGAC
 CTATGCCCATCAGGCAGGAGCCTCGACCTAGCGGGGGCAGTGGCAGCAGCTTTGGGCCACAGACTGG
 CTTCCACAGACGCTGGACTCACTCCCGTACGTCTCCAGGATTGCCTGGACTCGGGCATTGGCTCCCTGG
 AGAGCCAGATGTCGGAACCTTGGGGGGTTCGAGGAGGAGGCCCTGGTGGAGCCGGGCCACCCGAGCCCC
 TTACACGGGCTACAGTCCCTATGGATCTGAGCTCCAGCCACCGCAGCCTTCTCTGCCTTTGGCCGGCC
 ATGGGTGTGGCCACTTCACTGTCCCTGCCGACTACCCACCCGCGCCCTGCCTTTCCACCTCGAGAGT
 ACTGGTCTGAACCATAACCACTGCCCCACCCACATCAGTCTTCCAGGAGCCCCAGTGCAGAGCCAGG
 GGCTGGCAGGAGCCGTTGGGCGAGGCAGACAGCCTGGCCAAGGAGCAGGCCAGCGTGTATACTAAGCTG
 TGTGGTGTGTTTCCCCGCACCTGGTGGAGGCTGTGATGGGGCGCTTCCACAGCTCCTGGACCCCCAGC
 AGCTGGTGGCAGATCCTCTCTACAAGTCCCAGCACCCAGTGAG

AG**CGGACCG**ACGCGTACGCGGCCGCTCGAGCAGAACTCATCTCAGAAGAGGATCTGGCAGCAAATGATATCC
 TGGATTACAAGGATGACGACGATAAGGTTTAA

Protein Sequence:

>RC201381 representing NM_025079
 Red=Cloning site Green=Tags(s)

MSGPCGEKPVLEASPTMSLWEFEDSHSRQGTTPRPGQELAAEEASALELQMKVDFFRKLGYSSTEIHSV
 LQKLVQADTNTVLGELVKHGTATERERQTSPPDCPQLPLVPRGGTTPKAPNLEPPLPEEKEGSDLRPVVI
 DGSNVAMSHGNKEVFSCRGILLAVNWFLEGRHTDITVFPVSWRKEQPRPDVPIITDQHILRELEKKILVF
 TPSRRVGGKRVVYDDRFIVKLAYESDGI VVSNDTYRDLQGERQEWKRFIEERLLMYSFVNDKFMPPDDP
 LGRHGPSLDNFLRKKPLTLEHRKQPCPYGRKCTYGIKCRFFHPERPSCPQRSVADELARANALLSPPRAPS
 KDKNGRRPSPSSQSSLLTESEQSLDGKLLGAQASPGSRQEGLTQTYAPSGRSLAPSGGSGSSFGPTDW
 LPQTLDSLPHYVSQDCLDSGIGSLESQMSLWGVGGGPGEPGPPRAPHYTYSPYSELPAATAAFSAFGRA
 MGAGHFSVPADYPPAPPAPPREYWSEYPLPPPTSVLQEPVQSPGAGRSPWGRADSLAKEQASVYTKL
 CGVFPPLVAVMGRFPQLLDPQQLAAEILSYKSQHPSE

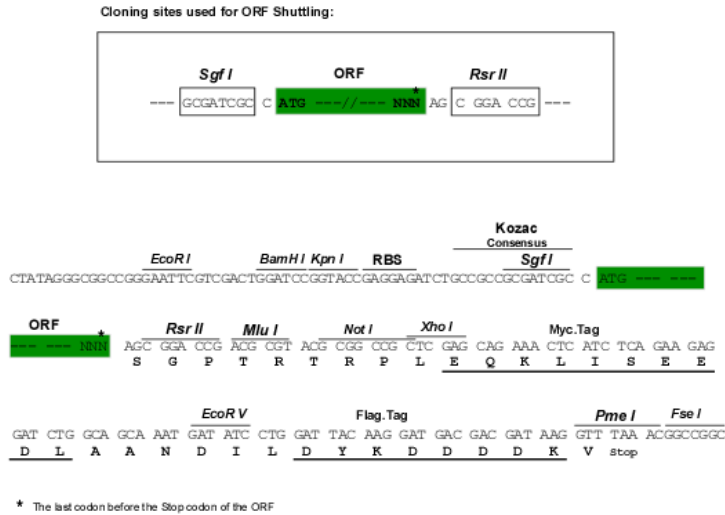
SGP**TRRRLEQKLI**SEEDLAANDILDYKDDDDKV

Chromatograms:

https://cdn.origene.com/chromatograms/mg3842_c05.zip

Restriction Sites: SgfI-RsrII

Cloning Scheme:



ACCN: NM_025079

ORF Size: 1797 bp

OTI Disclaimer: The molecular sequence of this clone aligns with the gene accession number as a point of reference only. However, individual transcript sequences of the same gene can differ through naturally occurring variations (e.g. polymorphisms), each with its own valid existence. This clone is substantially in agreement with the reference, but a complete review of all prevailing variants is recommended prior to use. [More info](#)

OTI Annotation: This clone was engineered to express the complete ORF with an expression tag. Expression varies depending on the nature of the gene.

Components: The ORF clone is ion-exchange column purified and shipped in a 2D barcoded Matrix tube containing 10ug of transfection-ready, dried plasmid DNA (reconstitute with 100 ul of water).

Reconstitution Method:

1. Centrifuge at 5,000xg for 5min.
2. Carefully open the tube and add 100ul of sterile water to dissolve the DNA.
3. Close the tube and incubate for 10 minutes at room temperature.
4. Briefly vortex the tube and then do a quick spin (less than 5000xg) to concentrate the liquid at the bottom.
5. Store the suspended plasmid at -20°C. The DNA is stable for at least one year from date of shipping when stored at -20°C.

RefSeq: [NM_025079.1](#), [NP_079355.1](#)

RefSeq Size: 2697 bp

RefSeq ORF: 1800 bp

Locus ID: 80149

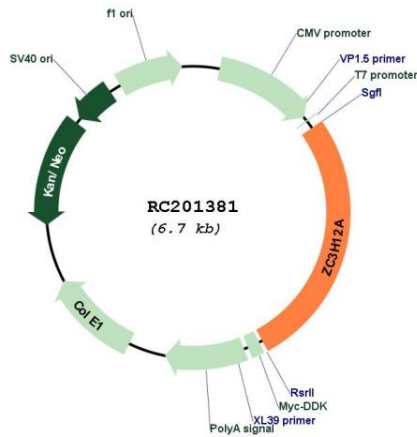
UniProt ID: [Q5D1E8](#)

Cytogenetics: 1p34.3

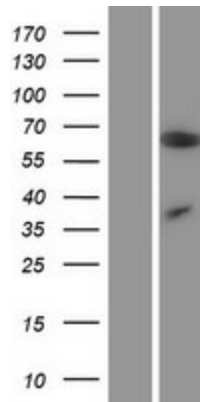
MW: 65.5 kDa

Gene Summary: ZC3H12A is an MCP1 (CCL2; MIM 158105)-induced protein that acts as a transcriptional activator and causes cell death of cardiomyocytes, possibly via induction of genes associated with apoptosis.[supplied by OMIM, Mar 2008]

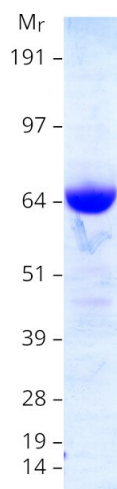
Product images:



Circular map for RC201381



Western blot validation of overexpression lysate (Cat# [LY410904]) using anti-DDK antibody (Cat# [TA50011-100]). Left: Cell lysates from untransfected HEK293T cells; Right: Cell lysates from HEK293T cells transfected with RC201381 using transfection reagent MegaTran 2.0 (Cat# [TT210002]).



Coomassie blue staining of purified ZC3H12A protein (Cat# [TP301381]). The protein was produced from HEK293T cells transfected with ZC3H12A cDNA clone (Cat# RC201381) using MegaTran 2.0 (Cat# [TT210002]).