

Product datasheet for RC201378

MALL (NM_005434) Human Tagged ORF Clone

Product data:

Product Type: Expression Plasmids
Product Name: MALL (NM_005434) Human Tagged ORF Clone
Tag: Myc-DDK
Symbol: MALL
Synonyms: BENE
Mammalian Cell Selection: Neomycin
Vector: pCMV6-Entry (PS100001)
E. coli Selection: Kanamycin (25 ug/mL)
ORF Nucleotide Sequence: >RC201378 ORF sequence
 Red=Cloning site Blue=ORF Green=Tags(s)

TTTTGTAATACGACTCACTATAGGGCGGCCGGAATTCGTCGACTGGATCCGGTACCGAGGAGATCTGCC
 GCCCGCATCGCC

ATGGCCTCGCCGACCCGCCGCCACCAGCTACGCCCCGTCCGACGTGCCCTCGGGGGTCGCGCTGTTCC
 TCACCATCCCTTTCGCCTTCTTCTGCCCAGCTGATATTTGGGTTCTTGGTCTGGACCATGGTAGCCGC
 CACCCACATAGTATACCCCTTGCTGCAAGGATGGGTGATGTATGTCTCGCTCACCTCGTTTCTCATCTCC
 TTGATGTTCTGTGTCTTACTTGTGGATTTTACAAAAGATTTGAATCCTGGAGAGTTCTGGACAGCC
 TGTACCACGGGACCACTGGCATCCTGTACATGAGCGCTGCCGTCTACAAGTACATGCCACGATTGTTTC
 TGAGAAACTGCTGGACCAAGAATTTACTACATTAATTCGGCAGCCTCGTTCTTCGCCTTCATCGCCACG
 CTGCTCTACATTCTCCATGCCTTCAGCATCTATTACCAC

ACGCGTACGCGGCCGCTCGAGCAGAACTCATCTCAGAAGAGGATCTGGCAGCAAATGATATCCTGGATT
 ACAAGGATGACGACGATAAGGTTTAA

Protein Sequence: >RC201378 protein sequence
 Red=Cloning site Green=Tags(s)

MASPDPPATSYAPSDVPSGVALFTIPFAFFLPELIFGFLVWTMVAATHIVYPLLQGWVMYVSLTSFLIS
 LMFLLSYLFQFYKRFESWRVLDLSYHGTTGILYMSAAVLQVHATIVSEKLLDPRIYYINSAASFFAFIAT
 LLYILHAFSIYYH

TRTRPLEQKLISEEDLAANDILDYKDDDDKV

Chromatograms: https://cdn.origene.com/chromatograms/mk6395_a01.zip



View online »

Restriction Sites: SgfI-MluI

Cloning Scheme:



ACCN: NM_005434

ORF Size: 459 bp

OTI Disclaimer: The molecular sequence of this clone aligns with the gene accession number as a point of reference only. However, individual transcript sequences of the same gene can differ through naturally occurring variations (e.g. polymorphisms), each with its own valid existence. This clone is substantially in agreement with the reference, but a complete review of all prevailing variants is recommended prior to use. [More info](#)

OTI Annotation: This clone was engineered to express the complete ORF with an expression tag. Expression varies depending on the nature of the gene.

Components: The ORF clone is ion-exchange column purified and shipped in a 2D barcoded Matrix tube containing 10ug of transfection-ready, dried plasmid DNA (reconstitute with 100 ul of water).

Reconstitution Method:

1. Centrifuge at 5,000xg for 5min.
2. Carefully open the tube and add 100ul of sterile water to dissolve the DNA.
3. Close the tube and incubate for 10 minutes at room temperature.
4. Briefly vortex the tube and then do a quick spin (less than 5000xg) to concentrate the liquid at the bottom.
5. Store the suspended plasmid at -20°C. The DNA is stable for at least one year from date of shipping when stored at -20°C.

RefSeq: [NM_005434.5](#)

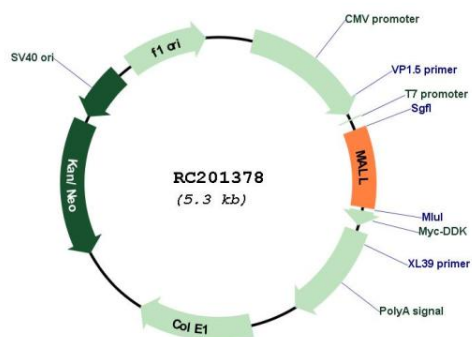
RefSeq Size: 3071 bp

RefSeq ORF: 462 bp

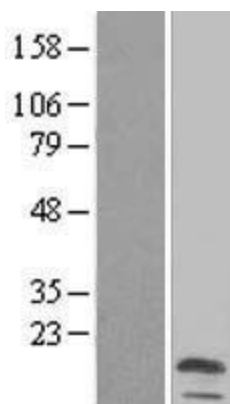
Locus ID: 7851

UniProt ID:	Q13021
Cytogenetics:	2q13
Protein Families:	Transmembrane
MW:	17.4 kDa
Gene Summary:	This gene encodes an element of the machinery for raft-mediated trafficking in endothelial cells. The encoded protein, a member of the MAL proteolipid family, predominantly localizes in glycolipid- and cholesterol-enriched membrane (GEM) rafts. It interacts with caveolin-1. [provided by RefSeq, Jul 2008]

Product images:



Circular map for RC201378



Western blot validation of overexpression lysate (Cat# [LY417304]) using anti-DDK antibody (Cat# [TA50011-100]). Left: Cell lysates from untransfected HEK293T cells; Right: Cell lysates from HEK293T cells transfected with RC201378 using transfection reagent MegaTran 2.0 (Cat# [TT210002]).