

Product datasheet for RC201377

AP2M1 (NM_001025205) Human Tagged ORF Clone

Product data:

Product Type:	Expression Plasmids
Product Name:	AP2M1 (NM_001025205) Human Tagged ORF Clone
Tag:	Myc-DDK
Symbol:	AP2M1
Synonyms:	AP50; CLAPM1; MRD60; mu2
Vector:	pCMV6-Entry (PS100001)
E. coli Selection:	Kanamycin (25 ug/mL)
Cell Selection:	Neomycin
ORF Nucleotide Sequence:	>RC201377 representing NM_001025205 Red=Cloning site Blue=ORF Green=Tags(s)

TTTTGTAATACGACTCACTATAGGGCGCCGGAATTCGTCGACTGGATCCGGTACCGAGGAGATCTGCC
GCC**CGGATCGCC**

ATGATTGGAGGCTTATTCATCTATAATCACAAGGGGGAGGTGCTCATCTCCCGAGTCTACCGAGATGACA
TCGGGAGGAACGCAGTGGATGCCTTTCGGGTCAATGTTATCCATGCCCGGCAGCAGGTGCGCAGCCCGT
CACCAACATTGCTCGCACCAGCTTCTTCCACGTTAAGCGGTCCAACATTTGGCTGGCAGCAGTCACCAAG
CAGAATGTCAACGCTGCCATGGTCTTCCGAAATTCCTCTATAAGATGTGTGACGTGATGGCTGCCTACTTTG
GCAAGATCAGCGAGGAAAACATCAAGAACAATTTTGTGCTCATATATGAGCTGCTGGATGAGATTCTAGA
CTTTGGCTACCCACAGAATTCGAGACAGGCGCTGAAAACCTTCATCACGCAGCAGGGCATCAAGAGT
CAGCATCAGACAAAAGAAGAGCAGTCACAGATCACAGCCAGGTAACGGGCAGATTGGCTGGCGGCGAG
AGGGTATCAAGTATCGTCGGAATGAGCTTCTCTGGATGTGCTGGAGAGTGTGAACCTGCTCATGTCCCC
ACAAGGGCAGGTGCTGAGTGCCCATGTGTGGGCCGGGTGGTGTGAAGAGCTACCTGAGTGGCATGCCT
GAATGCAAGTTTGGGATGAATGACAAGATTGTTATTGAAAAGCAGGGCAAAGGCACAGCTGATGAAACAA
GCAAGAGCGGGAAGCAATCAATTGCCATTGATGACTGCACCTTCCACCAGTGTGTGCGACTCAGCAAGTT
TGACTCTGAACGCAGCATCAGCTTTATCCCGCCAGATGGAGAGTTTGAAGTTATGAGGTATCGCACAAAC
AAGGACATCATCCTTCCCTTCCGGGTGATCCCGCTAGTGCAGAGAAGTGGGACGCACCAAACCTGGAGGTCA
AGGTGGTCATCAAGTCCAACCTTAAACCCTCACTGCTGGCTCAGAAGATCGAGGTGAGGATCCCAACCCC
ACTGAACACAAGCGGGTGCAGGTGATCTGCATGAAGGGGAAGGCCAAGTACAAGCCAGCGAGAATGCC
ATCGTGTGAAGATCAAGCGCATGGCAGGCATGAAGGAATCGCAGATCAGCGCAGAGATTGAGCTTCTGC
CTACCAACGACAAGAAGAAATGGGCTCGACCCCATTTCCATGAACTTTGAGGTGCCATTCGCGCCCTC
TGGCCTCAAGGTGCGCTACTTGAAGGTGTTTGAACCGAAGCTGAACTACAGCGACCATGATGTCATCAA
TGGGTGCGCTACATTGGCCGCGAGTGGCATTATGAAACTCGCTGC

ACGCGTACGCGGCCGCTCGAGCAGAAACTCATCTCAGAAGAGGATCTGGCAGCAAATGATATCCTGGATT
ACAAGGATGACGACGATAAGGTTTAA



[View online »](#)

Protein Sequence: >RC201377 representing NM_001025205
 Red=Cloning site Green=Tags(s)

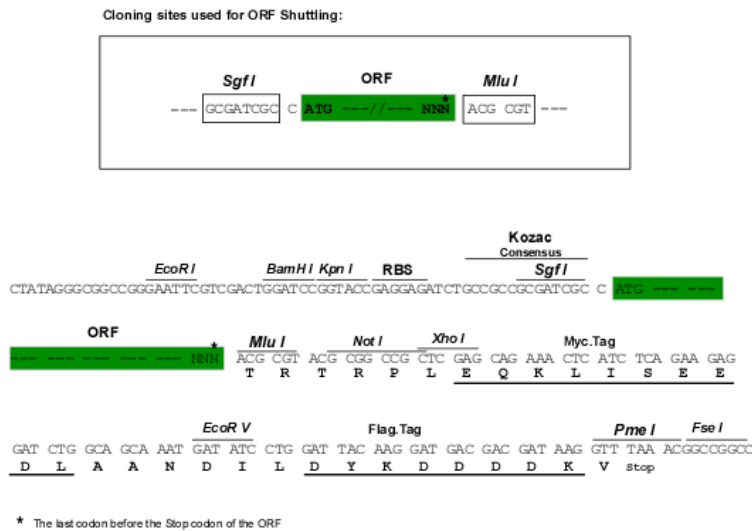
MIGGLFIYNHKGEVLISRVRDDIGRNAVD AFRVNVIIHARQQVRSPTNIARTSFFHVKRSNIWLA AVTK
 QNVNAAMVFEFLYKMC DVMAAYFGKISEENIKNNFVLIYELLDEILDFGYPQNS ETGALKTFITQQGIKS
 QHQTKEEQSQITSQVTGQIGWRREGIKYRRNELFDLVESVNL LMS PQGQVLSAHVSGRVVMKSYLSGMP
 ECKFGMNDKIVIEKQGGTADETSKSGKQSI AIDDDCTFHQCVR LSKFDSERSISFIPPDGEFELMRVRTT
 KDIIILPFRVIPLVREVGRTKLEVKVVIKSNFKPSLLAQKIEVRIP TPLNTSGVQVICMKGKAKYKASENA
 IYWKIKRMAGMKESQISAEIE LLPTNDKKKWARPPISMNFVVPFAP SGLKVRYLKVFE PKLNYSDHDVIK
 WVR YIGRSGIYETRC

TRTRPLEQKLISEEDLAANDILDYKDDDDKV

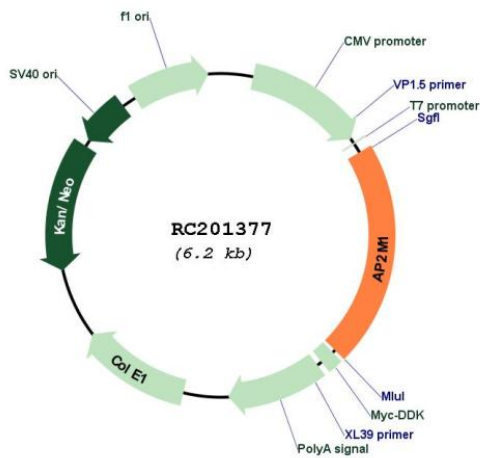
Chromatograms: https://cdn.origene.com/chromatograms/mg2803_b09.zip

Restriction Sites: SgfI-MluI

Cloning Scheme:

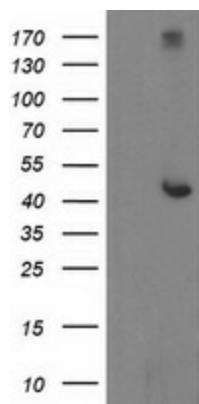


Plasmid Map:

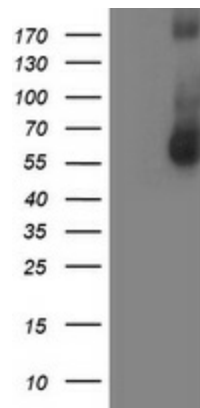


ACCN:	NM_001025205
ORF Size:	1305 bp
OTI Disclaimer:	The molecular sequence of this clone aligns with the gene accession number as a point of reference only. However, individual transcript sequences of the same gene can differ through naturally occurring variations (e.g. polymorphisms), each with its own valid existence. This clone is substantially in agreement with the reference, but a complete review of all prevailing variants is recommended prior to use. More info
OTI Annotation:	This clone was engineered to express the complete ORF with an expression tag. Expression varies depending on the nature of the gene.
RefSeq:	NM_001025205.1 , NP_001020376.1
RefSeq Size:	1952 bp
RefSeq ORF:	1302 bp
Locus ID:	1173
UniProt ID:	Q96CW1
Protein Families:	Druggable Genome
Protein Pathways:	Endocytosis, Huntington's disease
MW:	49.2 kDa
Gene Summary:	This gene encodes a subunit of the heterotetrameric coat assembly protein complex 2 (AP2), which belongs to the adaptor complexes medium subunits family. The encoded protein is required for the activity of a vacuolar ATPase, which is responsible for proton pumping occurring in the acidification of endosomes and lysosomes. The encoded protein may also play an important role in regulating the intracellular trafficking and function of CTLA-4 protein. Three transcript variants encoding different isoforms have been found for this gene. [provided by RefSeq, Jul 2015]

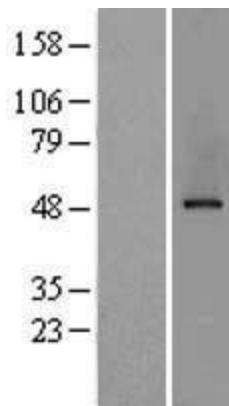
Product images:



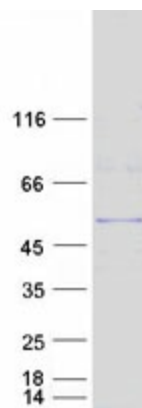
HEK293T cells were transfected with the pCMV6-ENTRY control (Cat# [PS100001], Left lane) or pCMV6-ENTRY AP2M1 (Cat# RC201377, Right lane) cDNA for 48 hrs and lysed. Equivalent amounts of cell lysates (5 ug per lane) were separated by SDS-PAGE and immunoblotted with anti-AP2M1 (Cat# [TA503015]). Positive lysates [LY422484] (100ug) and [LC422484] (20ug) can be purchased separately from OriGene.



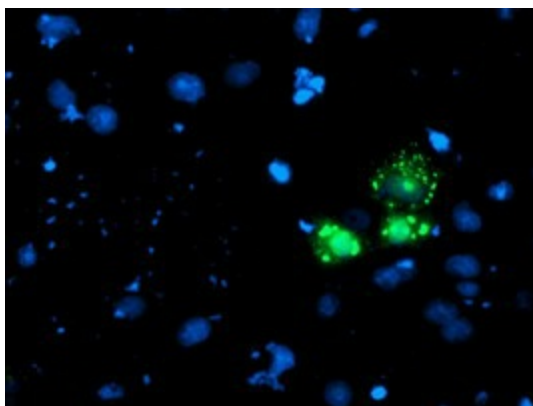
HEK293T cells were transfected with the pCMV6-ENTRY control (Left lane) or pCMV6-ENTRY AP2M1 (RC201377, Right lane) cDNA for 48 hrs and lysed. Equivalent amounts of cell lysates (5 ug per lane) were separated by SDS-PAGE and immunoblotted with anti-AP2M1 ([TA503019]). Positive lysates [LY422484] (100ug) and [LC422484] (20ug) can be purchased separately from OriGene.



Western blot validation of overexpression lysate (Cat# [LY422484]) using anti-DDK antibody (Cat# [TA50011-100]). Left: Cell lysates from untransfected HEK293T cells; Right: Cell lysates from HEK293T cells transfected with RC201377 using transfection reagent MegaTran 2.0 (Cat# [TT210002]).



Coomassie blue staining of purified AP2M1 protein (Cat# [TP301377]). The protein was produced from HEK293T cells transfected with AP2M1 cDNA clone (Cat# RC201377) using MegaTran 2.0 (Cat# [TT210002]).



Anti-AP2M1 mouse monoclonal antibody ([TA503019]) immunofluorescent staining of COS7 cells transiently transfected by pCMV6-ENTRY AP2M1 (RC201377).