

Product datasheet for RC201371

UBAP2L (NM_014847) Human Tagged ORF Clone

Product data:

Product Type:	Expression Plasmids
Product Name:	UBAP2L (NM_014847) Human Tagged ORF Clone
Tag:	Myc-DDK
Symbol:	UBAP2L
Synonyms:	NICE-4; NICE4
Mammalian Cell Selection:	Neomycin
Vector:	pCMV6-Entry (PS100001)
E. coli Selection:	Kanamycin (25 ug/mL)
ORF Nucleotide Sequence:	>RC201371 ORF sequence Red=Cloning site Blue=ORF Green=Tags(s)

TTTTGTAATACGACTCACTATAGGGCGGCCGGGAATTCGTCGACTGGATCCGGTACCGAGGAGATCTGCC
GCC**CGATCGCC**

ATGATGACATCGGTGGGCACTAACCGAGCCCGGGGAACTGGGAACAACCTCAAACCAAACCAGACAC
AGCACAAGCAGCGGCCACAGGCCACTGCAGAACAATTAGACTTGCACAGATGATTCGGACCATAATGA
TGCTGACTTTGAGGAGAAGGTGAAACAATTGATTGATATTACAGGCAAGAACCAGGATGAATGTGTGATT
GCTTTGCATGACTGCAATGGAGATGTCAACAGAGCTATCAATGTTCTTCTGGAAGGAAACCCAGACACGC
ATTCCTGGGAGATGGTCGGGAAGAAGAAGGGAGTCTCAGGCCAGAAGGATGGTGGCCAGACGGAATCCAA
TGAGGAAGGCAAAGAAAATCGAGACCGGGACAGAGACTATAGTCGGCGACGTGGTGGCCACCAAGACGG
GGGAGAGGTGCCAGCCGTGGACGAGAGTTTCGAGGTGAGGAAAATGGATTGGATGGCACCAAGAGTGGAG
GGCCTTCTGGAAGAGGAACAGAAAGAGGCAGAAGGGGCCGTGGCCGAGGCAGAGGTGGCTCTGGTAGGCG
AGGAGGAAGGTTTTCTGCTCAAGGAATGGGAACCTTTAACCCAGCTGATTATGCAGAGCCAGCCAATACT
GATGATAACTATGGCAATAGCAGCGGCAATACGTGGAACAACACTGGCCACTTTGAACCAGATGATGGGA
CGAGTGCATGGAGGACTGCAACAGAGGAGTGGGGGACTGAAGATTGGAATGAAGATCTTCTGAGACCAA
GATCTTCACTGCCTCTAATGTGTCTTCAGTGCCTCTGCCTGCGGAGAATGTGACAATCACTGCTGGTCAG
AGAATTGACCTTGCTGTTCTGCTGGGGAAGACACCATCTACAATGGAGAATGATTCACTAATCTGGATC
CGTCTCAGGCTCCTTCTCTGGCCAGCCTCTGGTGTTCAGTAATTCGAAGCAGACTGCCATATCACAGCC
TGCTTCAGGGAACACATTTTCTCATCACAGTATGGTGAGCATGTTAGGGAAGGATTTGGTGATGTCGGT
GAAGCTAAAGGCGGCAGTACTACAGGCTCCAGTTCCTGGAGCAATTAAGACTGCCAAGCCCTGGCTC
AGTTGGCAGCTCAGCATTCTCAGTCTGGAAGCACCACCCTCCTCTGGGACATGGGCTCGACGACACA
ATCCCCATCACTGGTGCAGTATGATTTGAAGAACCAAGTATTGAGCAGTGCACAGCCCTTTACAAGG
CGCCAGGCTTTTACCCATCTTCAACCATGATGGAGGTGTTCTTCAGGAGAAGTCACTGCAGTGGCTA
CCTCCACAGCTGCACCTCCACCTCGTCTTCTCCTCTGCCAAGCAAATCCACATCGGCTCCACAGATGTC
GCCTGGATCTTCAGACAACCACTCTAGCCCTCAGCCGGCTCACCAGAACTGAAACAGCAGAAGAAA



[View online >](#)

AAAGCCTCCTTGACTTCTAAGATTCTGCTCTGGCTGTGGAGATGCCTGGCTCAGCAGATATCTCAGGGC
TAAACCTGCAGTTTGGGCATTGCAGTTTGGGTGAGAGCCTGTCTTTCTGATTATGAGTCCACCCAC
CACGAGCGCCTCTTAAGCCAGGCTCCAAGTAGCCTGTATACCAGCACGGCCAGTGAATCATCTCTACA
ATTTTCATTAACCAGAGTCAGGAGTCTGGTTATCAGAGCGGCCAATTTCAGTCGACAACCTATACCTCCC
AAAATAATGCTCAGGGCCCTCTTATGAACAGAGATCCACACAGACTCGGCGGTACCCAGCTCCATCTC
TTCATCACCCAAAAGGACCTGACTCAGGCAAAGAATGGCTTCAGTTCTGTGCAGGCCACGCAGTTACAG
ACCACCAATCTGTTGAAGGTCTACAGGCTCTGCAGTAAAATCTGATTACCTTCCACTCTCAGTACCTCC
CCCTCTCAATGAAACGGTATCTGCAGTTCCTTACTGACGACAACCAATCAGCATTTCATCTCCTTGGG
TGGCTTGAGCCACAGTGAGGAGATTCCAAATACTACCACCACACAACACAGCAGCAGTTATCTACGCAG
CAGAATACCCTTTCATCATCAACATCTTCTGGGCGCACTTCGACATCCACTCTTTTGACACAAGTGTGG
AGAGTGAGGCGAATCTCCATTCTTCTCCAGCACTTTTTCCACCACATCCAGCACAGTCTCTGCACCTCC
CCCAGTGGTCAGTGTCTCCTCCAGTCTCAATAGTGGCAGTAGCCTGGGCCTCAGCCTAGGCAGCAACTCC
ACTGTCACAGCCTCGACTCGAAGCTCAGTTGCTACGACTTCAGGAAAAGCTCCTCCCAACCTCCTCCTG
GGGTCCCCTGTTGCTAATCCGTATATTATGGCTCCAGGGCTGTTACATGCCTACCCGCCACAAGT
ATATGGTTATGATGACTTGCAGATGCTTCAGACAAGATTTCCATTGGATTACTACAGCATCCATTTCCC
ACACCCACTACTCCGCTGACTGGGAGGGATGGTAGCCTGGCCAGCAACCTTATTCTGGTGACCTCACAA
AGTTTCGGCCGTGGGGATGCCTCCTCCCCAGCCCCGGCCACAACCTTGGCCCAACCCCAACAGAACCAGAC
GCAGACTACCATACCACGCAGCAGACATTCCTGAACCCGGCGCTGCCTCCTGGCTACAGTTACACCAGC
CTGCCATACTATACAGGGGTCCCAGGCCTCCCCAGCACCTTCAGTATGGGCCTGCTGTGTTCCCTGTGG
CTCCTACCTCTTCAAGCAGCATGGTGTGAATGTCAGTGTGAATGCATCGGCCACCCCTTCCAACAGCC
GAGTGGATATGGGTCTCATGGATACAACACTGGTGTTCAGTACCTCCAGTAACACGGGCGTGCCAGAT
ATCTCGGGTCTGTGACTCCAAAACCCAGCAGTCTTTGAGAAACAAGTTTTCATTCCGGTACTCCTG
CTGCTTCTTCAACTTGCCTTCAAGCCTAGGAAGTGGGGCCCATCAATCCGGCCACAGCTTGCCCTA
CCACCTGCCCCCTTATGCACATTCTGACCCCATCAGCAGCCGCAATTCAGATCCTTACCATCAC
CTGCAGCAGGATGGCCAGACGGGACGGGCAACGTAGCCAGACCAGCTCCATCCCGCAGAAGCCCCAGA
CCAACAAGTCTGCCTACAACAGCTACAGCTGGGGGCCAAC

ACGCGTACGCGGCCGCTCGAGCAGAACTCATCTCAGAAGAGGATCTGGCAGCAAATGATATCCTGGATT
ACAAGGATGACGACGATAAGGTTTAA

Protein Sequence:

>RC201371 protein sequence
Red=Cloning site Green=Tags(s)

MMTSVGTNRARGNWEQPQNQNTQHKQRPQATAEQIRLAQMI SDHNDADFEKVKQLIDITGKNQDECVI
ALHDCNGDVNRAINVLLLEGNPDTHSWEMVGGKKGVSQKDGQTESNEEGKENRDRDRDYRRRGPPRR
GRGASRGREFRQENLDGKSGGPPSGRGTERRRGRGRGGSGRRGRFSAQMGTFNPADYAEPAANT
DDNYGNSSGNTWNNTGHFEPDDGTSAWRATEEWGTEDWNEDLSETKIFTASNVSVP LPAENVITAGQ
RIDLAVLLGKTPSTMENDSSNLDPSSQAPSLAQPLVFSNSKQTAISQPASGNTFSHSMVMSMLGKGF
EAKGGSTTGSQFLEQFKTAQALAAQHSQSGSTTTSSWDMGSTTQSPSLVQYDLKNPDSAVHSPFTK
RQAFTPSSTMMEVFLQEKS PAVATSTAAPPSSPLPSKSTSAPQMSPGSSDNQSSSPQPAHQKQKQK
KASLTSKIPALAVEMPGSADISGLNLQFALQFGSEPVLSDYESTPTTSSASSQAPSSLYTSTASESSST
ISSNQSQESGYQSGPIQSTTYTSQNNAQGPLYEQRSTQTRRYPSSISSSPQKDLTQAKNGFSSVQATQLQ
TTQSVEGATGSAVKSDSPSTSSIPPLNETVSAASLLTTTNQHSSSLGGLSHSEEIPNTTTTQHSSTLSTQ
QNTLSSSTSSGRTSTSTLLHTSVESEANLHSSSTFFSTTSSTVSAPPVVSVSSSLNSGSSLGLSLGNS
TVTASTRSSVATTSGKAPPNLPVGPVPLLPNPYIMAPGLLHAYPPQVYGYDDLQMLQTRFPLDYYSIPFP
TPTTPLTGRDGLASNPYSGDLTKFGRGDASSPAPATTLAQPQQNTQTHHTTQQTFLNPALPPGYSYTS
LPYYTGVPGLPSTFYGPVAVFPVAPTSSKQHG VNVSVNASATPFQQPSGYGSHGYNTGVSVTSSNTGVPD
ISGSVYSKTQSFQKGFHSGTPAASFNLPSALGSGGPINPATAAAYPPAPFMHILTPHQPHSILHHL
LQQDQGTGSGQRSQTSSIPQKPQTNKSAYSYSWGAN

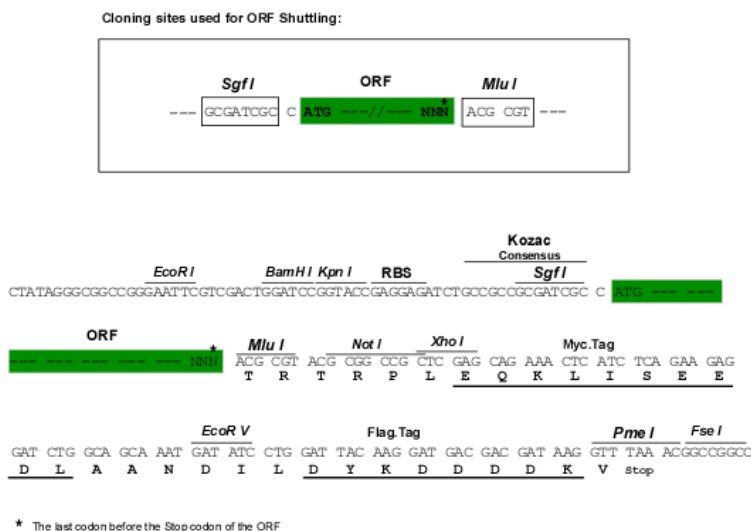
TRTRPLEQKLISEEDLAANDILDYKDDDDKV

Chromatograms:

https://cdn.origene.com/chromatograms/mk6259_d11.zip

Restriction Sites: SgfI-MluI

Cloning Scheme:



ACCN: NM_014847

ORF Size: 3261 bp

OTI Disclaimer: The molecular sequence of this clone aligns with the gene accession number as a point of reference only. However, individual transcript sequences of the same gene can differ through naturally occurring variations (e.g. polymorphisms), each with its own valid existence. This clone is substantially in agreement with the reference, but a complete review of all prevailing variants is recommended prior to use. [More info](#)

OTI Annotation: This clone was engineered to express the complete ORF with an expression tag. Expression varies depending on the nature of the gene.

Components: The ORF clone is ion-exchange column purified and shipped in a 2D barcoded Matrix tube containing 10ug of transfection-ready, dried plasmid DNA (reconstitute with 100 ul of water).

Reconstitution Method:

1. Centrifuge at 5,000xg for 5min.
2. Carefully open the tube and add 100ul of sterile water to dissolve the DNA.
3. Close the tube and incubate for 10 minutes at room temperature.
4. Briefly vortex the tube and then do a quick spin (less than 5000xg) to concentrate the liquid at the bottom.
5. Store the suspended plasmid at -20°C. The DNA is stable for at least one year from date of shipping when stored at -20°C.

Note: Plasmids are not sterile. For experiments where strict sterility is required, filtration with 0.22um filter is required.

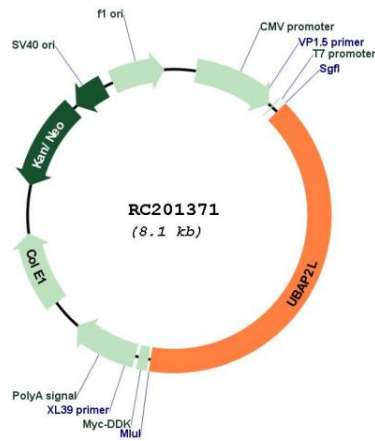
RefSeq: [NM_014847.2](#), [NP_055662.2](#)

RefSeq Size: 4006 bp

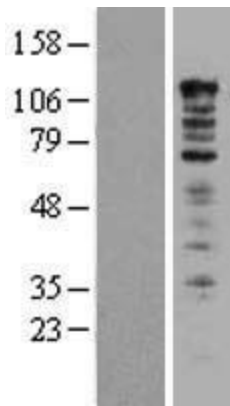
RefSeq ORF: 3264 bp

Locus ID: 9898
UniProt ID: [Q14157](#)
Cytogenetics: 1q21.3
Domains: UBA
Protein Families: Druggable Genome
MW: 114.5 kDa
Gene Summary: Plays an important role in the activity of long-term repopulating hematopoietic stem cells (LT-HSCs).[UniProtKB/Swiss-Prot Function]

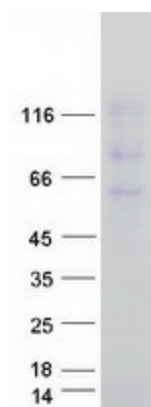
Product images:



Circular map for RC201371



Western blot validation of overexpression lysate (Cat# [LY414971]) using anti-DDK antibody (Cat# [TA50011-100]). Left: Cell lysates from untransfected HEK293T cells; Right: Cell lysates from HEK293T cells transfected with RC201371 using transfection reagent MegaTran 2.0 (Cat# [TT210002]).



Coomassie blue staining of purified UBAP2L protein (Cat# [TP301371]). The protein was produced from HEK293T cells transfected with UBAP2L cDNA clone (Cat# RC201371) using MegaTran 2.0 (Cat# [TT210002]).