

## Product datasheet for **RC201369**

### ZNF577 (NM\_032679) Human Tagged ORF Clone

#### Product data:

Product Type:	Expression Plasmids
Product Name:	ZNF577 (NM_032679) Human Tagged ORF Clone
Tag:	Myc-DDK
Symbol:	ZNF577
Mammalian Cell Selection:	Neomycin
Vector:	pCMV6-Entry (PS100001)
E. coli Selection:	Kanamycin (25 ug/mL)



[View online »](#)

**ORF Nucleotide Sequence:**

>RC201369 ORF sequence  
 Red=Cloning site Blue=ORF Green=Tags(s)

TTTTGTAATACGACTCACTATAGGGCGGCCGGGAATTCGTCGACTGGATCCGGTACCGAGGAGATCTGCC  
 GCC**CGCATCGCC**

ATGTCTGTGAGGAGAGCAAGGCAGTCTTCAGGGGAGGGTCAATTGTCATTCAAGATGTGGCTGTGG  
 GCTTACCAGGGAGGAGTGGCAGTTTTTGGACAGTCTCAGAAGGCTTTGTACAAGGAAGTAATGTTGGA  
 GAACTACATCAACCTAGTATCAATAGGGTATCGAGGCACCAAGCCAGATTCGCTCTTCAAGTTGGAGCAA  
 GGAGAACCCCGAGGATAGTAGAAGGAGCAGCCACAGTCAAATCTGTCCAGTTTTGTTATCCAGAGTA  
 GAAGATATGCAGGAAAAGATTCTGATGCATTTGGTGGATATGGGAGATCATGCCTCCATATCAAGTGTGA  
 CAAAACCTTACTGGAGTTAAATACCATAGATGTGTTAAACCCAGCAGCCCTAAATCACAGCTCAATGAC  
 CTACAAAAATTTGTGCAGGAGGAAACCACATGAATGCAGTGTGTGCGGGAGAGCCTTCTCCAGGAAAG  
 CACAGCTTATTCAACATCAGAGAACTGAAAGAGGAGAGAAAACCCCATGGATGTGGTGAATGTGGGAAAC  
 ATTCATGAGGAAGATTCAGCTCACTGAGCATCAGAGAACTCACACAGGAGAGAAGCCCCATGAATGTAGT  
 GAATGTGGAAAAGCCTTCTCCAGAAAAGTACAGCTCATGGTCCATCAGAGAACCCATACAGGAGAGAAAC  
 CCTACAGATGCAGCGAATGCGGAAAAGCCTTCAGCCGGAAGTGCCGGCTCAATAGACATCAGCGATCACA  
 TACTGGAGAGAACTCTATGGGTGCAGTGTGTGGGAAAGCCTTTTCTCAGAAGGCATACCTCACTGCA  
 CACCAGAGACTTCACACAGGAGATAAGCCTTATAAATGCAGTGATTGTGGAAGAACCTTCTATTTAAGT  
 CAGACCTGACCAGACATCAGAGGATTCATACGGGAGAGAAACCTTATGAATGTAGTGAGTGTGAAAAAGC  
 CTTTAGAAGCAAGTGAAGCTCATTTCAGCATCAGCGTACTCACACTGGAGAGAGACCATATTCATGCAGA  
 GAATGTGGCAAAGCCTTTGCCACATGTCAGTCTCATTAAACATGAGAAAACCTACATAGAGGAGACAG  
 CCATAAATTCACTGACGGTGGAGAAACCTTCCTCAAGGAGTCAACCTCCTTATACATGAGCGAATCAT  
 ACAAGAGCAAAAAGACTGTGAACACAGTACCTATAGAAATGCCTTCTCAGGAACCCCGCCATTGTTAAAC  
 AAGAGTGAGCGCCTAGTGGGCAGAAATGTAGTATTGTGGAACAACCTTTTCCAAGAAATCAAGCCTTGT  
 TAGTTAATCAGGAATTTGAACAGAGAATAAGCCTCACAAATGAAGTGAATGTGGCCCATCAGTAATAAA  
 TTATATCTTGATCTTACAGATATTGTATCAGAA

**ACCGGT**ACGCGGCCGCTCGAGCAGAAACTCATCTCAGAAGAGGATCTGGCAGCAAATGATATCCTGGATT  
 ACAAGGATGACGACGATAAGGTTTAA

**Protein Sequence:**

>RC201369 protein sequence  
 Red=Cloning site Green=Tags(s)

MSVREQGSSSGEGLSFEDVAVGFTREEWQFLDQSQKVLKYEVMLENYINLVSIGYRGTKPDSLFLKLEQ  
 GEPPGIVEGAHSQICPGFVIQSRRYAGKDSDAFGGYGRSCLHIKCDKTLTGKVKYHRCVKPSSPKSQLND  
 LQKICAGGKPEHCSVCGRAFSRKAQLIQHQRTERGEKPHGCGECKTFMRKIQLEHQRTHTEKPEHCS  
 ECGKAFSRKSQLMVHQRTHTGEKPYRCECGKAFSRKCRNRHQRSHTEKLYGCSVCGKAFSQAAYLTA  
 HQRLHTGDKPYKSDCGRTFYFKSDLTRHQRIHTGEKPYECSECEKAFRSKSKLIQHQRTHTEKPYSCR  
 ECGKAFHMSVLIKHEKTHIRETAINSLTVEKPSRSHTSLYMSSELIQEQTVENTVPIEMPSSGTPPLLN  
 KSERLVGRNVVIVEQPFPRNQAFVFNQEFQRIISLTNEVNVAPSVINYILYLTDIVSE

**TR**TRPLEQKLISEEDLAANDILDYKDDDDKV

**Chromatograms:**

[https://cdn.origene.com/chromatograms/mk6395\\_a06.zip](https://cdn.origene.com/chromatograms/mk6395_a06.zip)

**Restriction Sites:**

SgfI-MluI

**Cloning Scheme:**


**ACCN:** NM\_032679

**ORF Size:** 1434 bp

**OTI Disclaimer:** The molecular sequence of this clone aligns with the gene accession number as a point of reference only. However, individual transcript sequences of the same gene can differ through naturally occurring variations (e.g. polymorphisms), each with its own valid existence. This clone is substantially in agreement with the reference, but a complete review of all prevailing variants is recommended prior to use. [More info](#)

**OTI Annotation:** This clone was engineered to express the complete ORF with an expression tag. Expression varies depending on the nature of the gene.

**Components:** The ORF clone is ion-exchange column purified and shipped in a 2D barcoded Matrix tube containing 10ug of transfection-ready, dried plasmid DNA (reconstitute with 100 ul of water).

- Reconstitution Method:**
1. Centrifuge at 5,000xg for 5min.
  2. Carefully open the tube and add 100ul of sterile water to dissolve the DNA.
  3. Close the tube and incubate for 10 minutes at room temperature.
  4. Briefly vortex the tube and then do a quick spin (less than 5000xg) to concentrate the liquid at the bottom.
  5. Store the suspended plasmid at -20°C. The DNA is stable for at least one year from date of shipping when stored at -20°C.

**Note:** Plasmids are not sterile. For experiments where strict sterility is required, filtration with 0.22um filter is required.

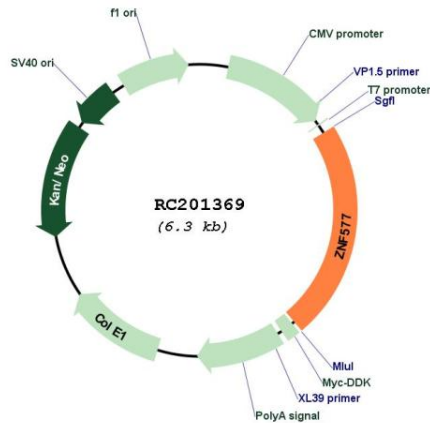
**RefSeq:** [NM\\_032679.1](#), [NP\\_116068.1](#)

**RefSeq Size:** 3096 bp

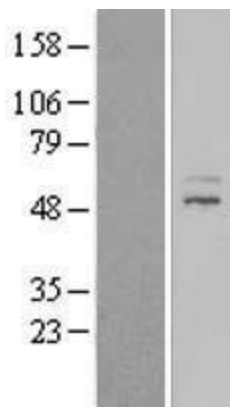
**RefSeq ORF:** 1458 bp

**Locus ID:** 84765

**UniProt ID:** [Q9BSK1](#)  
**Cytogenetics:** 19q13.41  
**Domains:** KRAB, zf-C2H2  
**Protein Families:** Transcription Factors  
**MW:** 54.2 kDa  
**Gene Summary:** May be involved in transcriptional regulation.[UniProtKB/Swiss-Prot Function]

**Product images:**


Circular map for RC201369



Western blot validation of overexpression lysate (Cat# [LY409979]) using anti-DDK antibody (Cat# [TA50011-100]). Left: Cell lysates from untransfected HEK293T cells; Right: Cell lysates from HEK293T cells transfected with RC201369 using transfection reagent MegaTran 2.0 (Cat# [TT210002]).