

Product datasheet for RC201361

WDR45 (NM_001029896) Human Tagged ORF Clone

Product data:

Product Type:	Expression Plasmids
Product Name:	WDR45 (NM_001029896) Human Tagged ORF Clone
Tag:	Myc-DDK
Symbol:	WDR45
Synonyms:	JM5; NBIA4; NBIA5; WDRX1; WIPI-4; WIPI4
Mammalian Cell Selection:	Neomycin
Vector:	pCMV6-Entry (PS100001)
E. coli Selection:	Kanamycin (25 ug/mL)
ORF Nucleotide Sequence:	>RC201361 representing NM_001029896 Red=Cloning site Blue=ORF Green=Tags(s)

TTTTGTAATACGACTCACTATAGGGCGGCCGGAATTCGTCGACTGGATCCGGTACCGAGGAGATCTGCC
GCC**CGATCGCC**

ATGACTCAACAGCCACTTCGAGGAGTGACCAGCCTGCGTTTCAACCAAGACCAAAGCTGCTTTTGTGCG
CCATGGAGACAGGTGTGCGCATCTACAACGTGGAGCCCTTGATGGAGAAGGGCATCTGGACCACGAGCA
GGTGGGCAGCATGGCTTGGTGGAGATGCTGCACCGCTCCAACCTTCTGGCCTTGGTGGCGGTGGTAGT
AGTCCCAAGTTCTCAGAGATCTCAGTGTGATCTGGGACGATGCCCGGGAGGGCAAGGACTCCAAGGAGA
AGCTGGTGTGGAGTTCACCTTCAACCAAGCCAGTCTTTCTGTGCGCATGCGCCATGACAAGATCGTGAT
CGTGCTGAAGAACCGCATCTATGTGTACTCCTTCCCGACAATCCCGAAAGCTGTTTGAGTTTGATACC
CGGGACAACCCCAAGGGCTCTGTGACCTCTGCCCCAGCCTGGAGAAGCAACTGCTAGTGTCCCGGGAC
ACAAGTGTGGGAGTCTGCAACTTGTGGACCTGGCGAGCACAAAGCCTGGCACCTCGTCTGCTCCATTAC
GATCAATGCACATCAGAGTGACATAGCCTGTGTCTCTAAACCAGCCAGGCACTGTAGTGGCCTCAGCC
TCCCAGAAGGGTACCCTTATTCGCCTCTTTGACACACAATCCAAGGAGAACTGGTGGAGCTGCGCCGAG
GCACTGACCCTGCCACCCTCTACTGCATTAACCTCAGCCACGACTCCTCCTTCTCTGCGCTTCCAGTGA
TAAGGGTACTGTCCATATCTTTGCTCTCAAGGATACCCGCCTCAACCGCCGCTCCGCGCTGGCTCGCGTG
GGCAAGGTGGGGCTATGATTGGGCACTACGTGGACTCTCAGTGGAGCCTGGCGAGCTTCACTGTGCCTG
CTGAGTCAGCTTGATCTGCGCCTTCGGTCGCAATACTTCCAAGAACGTCAACTCTGTCTTCCATCTG
CGTAGATGGGACCTTCCACAAATATGTCTTCACTCCTGATGGAAACTGCAACAGAGAGGCTTTTCGACGTG
TACCTTGACATCTGTGATGATGACTTT

ACGCGTACGCGGCCGCTCGAGCAGAAACTCATCTCAGAAGAGGATCTGGCAGCAAATGATATCCTGGATT
ACAAGGATGACGACGATAAGGTTTAA



[View online »](#)

Protein Sequence: >RC201361 representing NM_001029896

Red=Cloning site Green=Tags(s)

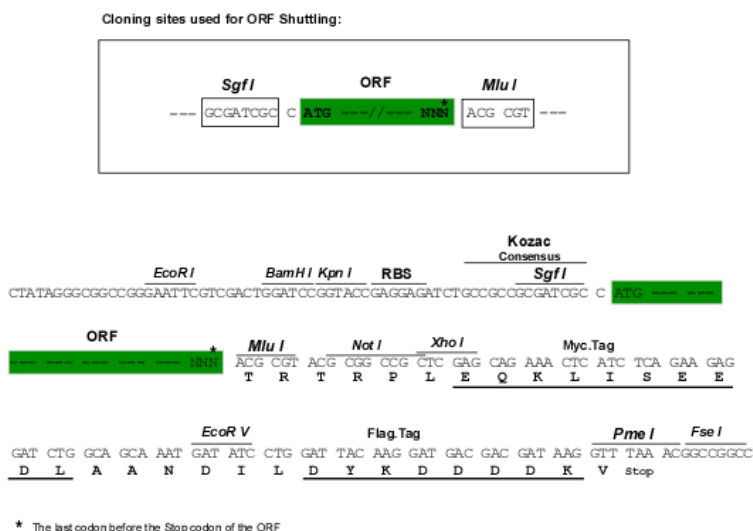
MTQQPLRGVTS LRFNQDQSCFCCAMETGVRIYNVEPLMEKGHL DHEQVGS MGLVEM LHRSNLLALVGGGS
 SPKFSEISVLIWDDAREGKDSKEKLVLEFFTKPVL SVRMRHDKIVIVLKNRIYVYSFPDNPRKLEFDT
 RDNPKGLCDLCP SLEKQLLVFPGHKCGSLQLVLDLASTKPGTSSAPFTINAHQSDIACVSLNQPGTVVASA
 SQKGT LIRLFD TQSKELVELRRGTD PATLYCINF SHDSSFLCASSDKGT VHI FALKDTRLNRRSALARV
 GKVGPMIGQYVDSQWSLASF TVPAESACICAFGRNT SKNVNSVIAICVDGTFHKYVFTPDGNCNREAFDV
 YLDICDDDDF

TRTRPLEQKLISEEDLAANDILDYKDDDDKV

Chromatograms: https://cdn.origene.com/chromatograms/ja1543_b11.zip

Restriction Sites: SgfI-MluI

Cloning Scheme:



ACCN: NM_001029896

ORF Size: 1080 bp

OTI Disclaimer: The molecular sequence of this clone aligns with the gene accession number as a point of reference only. However, individual transcript sequences of the same gene can differ through naturally occurring variations (e.g. polymorphisms), each with its own valid existence. This clone is substantially in agreement with the reference, but a complete review of all prevailing variants is recommended prior to use. [More info](#)

OTI Annotation: This clone was engineered to express the complete ORF with an expression tag. Expression varies depending on the nature of the gene.

Components: The ORF clone is ion-exchange column purified and shipped in a 2D barcoded Matrix tube containing 10ug of transfection-ready, dried plasmid DNA (reconstitute with 100 ul of water).

Reconstitution Method:

1. Centrifuge at 5,000xg for 5min.
2. Carefully open the tube and add 100ul of sterile water to dissolve the DNA.
3. Close the tube and incubate for 10 minutes at room temperature.
4. Briefly vortex the tube and then do a quick spin (less than 5000xg) to concentrate the liquid at the bottom.
5. Store the suspended plasmid at -20°C. The DNA is stable for at least one year from date of shipping when stored at -20°C.

Note: Plasmids are not sterile. For experiments where strict sterility is required, filtration with 0.22um filter is required.

RefSeq: [NM_001029896.2](#)

RefSeq Size: 1655 bp

RefSeq ORF: 1083 bp

Locus ID: 11152

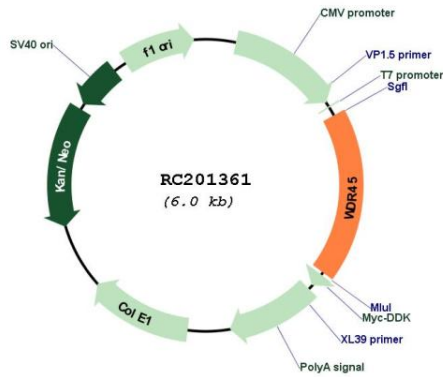
UniProt ID: [Q9Y484](#)

Cytogenetics: Xp11.23

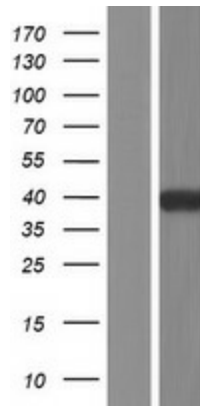
MW: 39.7 kDa

Gene Summary: This gene encodes a member of the WD repeat protein family. WD repeats are minimally conserved regions of approximately 40 amino acids typically bracketed by gly-his and trp-asp (GH-WD), which may facilitate formation of heterotrimeric or multiprotein complexes. Members of this family are involved in a variety of cellular processes, including cell cycle progression, signal transduction, apoptosis, and gene regulation. This gene has a pseudogene at chromosome 4q31.3. Multiple alternatively spliced transcript variants encoding distinct isoforms have been found for this gene, but the biological validity and full-length nature of some variants have not been determined. [provided by RefSeq, Jul 2008]

Product images:



Circular map for RC201361



Western blot validation of overexpression lysate (Cat# [LY422268]) using anti-DDK antibody (Cat# [TA50011-100]). Left: Cell lysates from untransfected HEK293T cells; Right: Cell lysates from HEK293T cells transfected with RC201361 using transfection reagent MegaTran 2.0 (Cat# [TT210002]).